

# Guest House - Bed & Breakfast Saint-Gilles-les-Hauts "Côté Cannelle"



Charming Old Farm, detached, 2 floors, separate entrance, in a(an) Estate

Setting : quiet, romantic

Guest Room(s) : 6

Receive up to : 12 guests

- Room "Corail"  
2 person(s)
- Room "Vanille"  
2 person(s)
- Room "Cannes a Sucre"  
3 person(s)
- Room "Bambou"  
2 person(s)
- Room "Pierre de Lave"  
3 person(s)
- Room "Galet"  
2 person(s)



Meublés de Tourisme

Saint-Gilles-les-Hauts

Reunion Island

Reservation : +261 (0) 262199800 (Madagascar)

Advert No. 70591

www.ihacom.co.uk



>> HOLIDAY LETTINGS

BOOK DIRECT WITH THE OWNERS

## Guest House - Bed & Breakfast



Charming Old Farm, detached, 2 floors, separate entrance, in a(an) Estate

- **Ideal for couples, honeymoon**
- **View :** panoramic, sea/ocean, fantastic sunset
- **Setting :** quiet, romantic
- **Exposure :** West

## Assets

- **Swimming pool :**  
Private swimming-pool, rectangular (length 33', width 13'), heated, inside, covered, illuminated, wave machine, steps in, child secure, outside shower
- **Parking :**  
Parking uncovered : 6 off road.
- **Advantages :**  
Steam bath, jacuzzi, massage table, fitness machine(s)
- **baby equipment :**  
Baby chair



Exterior facilities at guests disposal

## Surroundings & location



Countryside



Golf



Horse riding

### Leisure

- **Leisure activities less than 20 km / 12 miles :**

Bathing, pedalo, snorkelling, scuba diving, jet ski, surfing, sailing, kite surfing, canoeing, rafting, tennis, pathway, coastal/forest paths, hiking, climbing, mountain bike (path), parachuting, hang-gliding, paragliding, acrobatics, fishing, deep-sea angling, angling, spear fishing

- **Attractions and relaxation :**

Bar/pub, discotheque, restaurant, cinema, sea world, nature reserve, casino, fitness centre

### Surroundings

- **Locality :**

Sea/ocean 4.5mi.  
Sandy beach 4.5mi.  
Windsurfing spots 6mi.  
Surfing spots 4.5mi.  
Waterfall 3mi.  
Forest 9mi.

- **Amenities :**

Village centre 0.5mi.  
Bus stop / bus station 330'  
Post office 990'  
Bank 0.62mi.  
Cash point 0.3mi.  
Chemist 0.3mi.  
Doctor 0.3mi.



Surroundings



sitting room



### Exterior

- Ground surface :  
0.5 acre
- Outside at the guests disposal :  
Garden
- Exterior amenities at guests disposal :  
Garden table(s), garden seat(s), sun recliner(s), outside toilet facilities

### Interior

- Receive up to :  
12 guests, 6 Guest Room(s)
- Liveable floor area :  
3,800 Sq.ft.
- Interior comforts at guests disposal :  
T.V., wifi, washing machine



Swimming pool

### Services

- Restauration :  
Breakfast, Guest table supplement (4 X / per week +£26\*)
- Washing :  
Sheets, Towels, Linen, Blanket(s), Quilt(s), Pillows
- House :  
Cleaning on departure, Garden/swimming pool maintenance, Parking
- Personnel :  
Laundry supplement, Beauty treatments supplement, Massage supplement

### For your guidance

- For your guidance  
Children welcome  
Present on site : pets  
Non smoking rental, mobile telephone network coverage, personal transport advisable, alcohol not permitted  
Water : hot/cold



massage table

### Room "Corail"



2 person(s) : 2 adults

**Ideal for couples**



shower room

•Interior layout and facilities :

1 shower room, 1 WC

•Sleeps - bed(s) :

1 king-size bed(s)

•View :

Sea/ocean

•Facilities exclusive to :

Steam bath

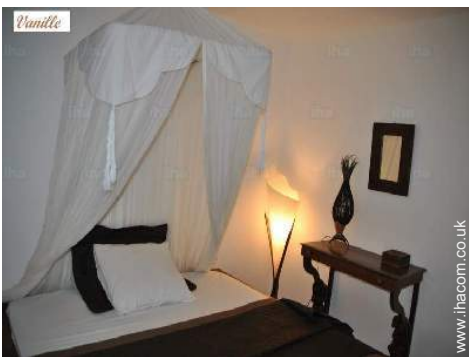
•Guest facilities and furnishings :

T.V., high speed internet access, mosquito nets

•Exterior private facilities :

Garden table(s)

### Room "Vanille"



2 person(s) : 2 adults

•Interior layout and facilities :

1 shower room, 1 WC

•Sleeps - bed(s) :

1 king-size bed(s)

•View :

Panoramic, unobscured, sea/ocean

•Guest facilities and furnishings :

T.V., wardrobe, mosquito nets

•Exterior private facilities :

Covered terrace

### Room "Cannes a Sucre"



3 person(s) : 2 adults - 1 children

•Interior layout and facilities :

1 shower room, 1 WC

•Sleeps - bed(s) :

1 king-size bed(s)

•View :

Panoramic, unobscured, sea/ocean

•Guest facilities and furnishings :

T.V., wardrobe, mosquito nets

•Exterior private facilities :

Covered terrace

### Room "Bambou"



2 person(s) : 2 adults

•Interior layout and facilities :

1 shower room, 1 WC

•Sleeps - bed(s) :

1 super king-size bed(s)

•View :

Panoramic, unobscured, sea/ocean

•Guest facilities and furnishings :

T.V., wardrobe, mosquito nets

•Exterior private facilities :

Covered terrace

### Room "Pierre de Lave"



3 person(s) : 2 adults - 1 children

•Interior layout and facilities :

1 shower room, 1 WC

•Sleeps - bed(s) :

1 double bed(s)

•View :

Panoramic, sea/ocean

•Exposure :

West

•Guest facilities and furnishings :

T.V., washing machine

•Exterior private facilities :

Covered terrace, garden seat(s)

### Room "Galet"



2 person(s) : 2 adults

•Interior layout and facilities :

1 bathroom, 1 WC, dining room

•Sleeps - bed(s) :

1 king-size bed(s)

•Facilities exclusive to :

Steam bath

•Guest facilities and furnishings :

T.V., high speed internet access, wifi, mosquito nets

•Exterior private facilities :

Covered terrace

Photo album - 1



Exterior facilities at guests disposal



sitting room



Surroundings



massage table



Photo album - 2



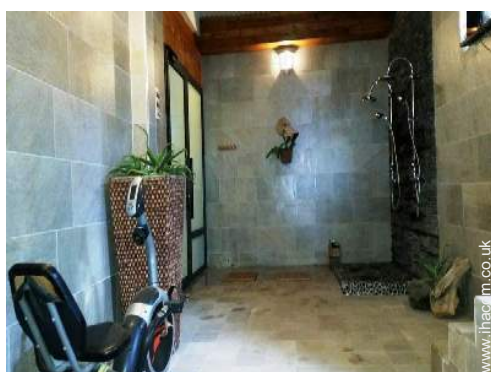
Swimming pool



Swimming pool



Heated swimming pool



steam bath



interior



Outside accommodation



the property



sitting room



sitting room



furnishings



Interior comforts at guests disposal

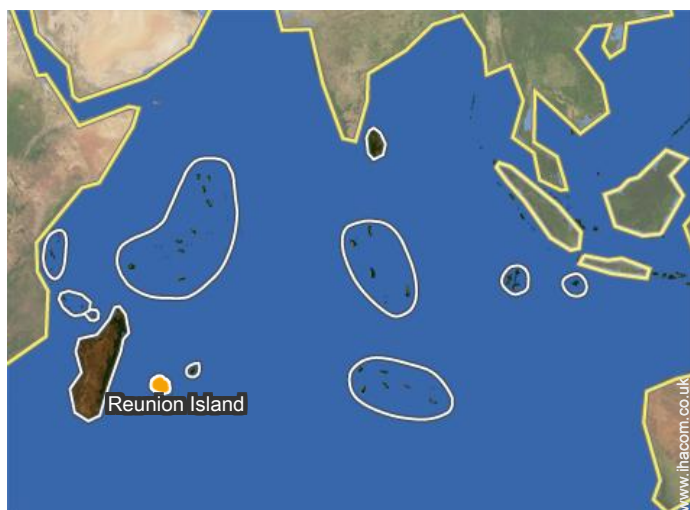


Guest House - Bed & Breakfast  
Saint-Gilles-les-Hauts - Reunion Island  
"Côté Cannelle"

9

[Book now](#)

Location



Location & Access



GPS coordinates in degrees, minutes, seconds: Latitude 21° 3'2"S - Longitude 55° 16'59"E (Dwelling)

Address

→ 63 route de Fatima  
97435 Saint-Gilles-les-Hauts

• Airport Roland Garros

→ Saint-Denis (Reunion), Reunion Island  
→ Distance : 28mi.  
→ Time : 40'

- Saint-Gilles-les-Bains : (4.5mi.)
- Saint-Paul : (4.5mi.)
- Saint-Leu : (9mi.)

Contact

Spoken languages



Guest House - Bed & Breakfast  
 Saint-Gilles-les-Hauts - Reunion Island  
**"Côté Cannelle"**

10  
[Book now](#)

Availability calendar - from : may 2019

May	W	Th	F	Sa	Su	M	Tu	W	Th	F	Sa	Su	M	Tu	W	Th	F	Sa	Su	M	Tu	W	Th	F	Sa	Su	M	Tu	W	Th	F
2019	1	2	3	4	5	6	7	8	9	10	11	12	13	14	15	16	17	18	19	20	21	22	23	24	25	26	27	28	29	30	31
1																															
2																															
3																															
4																															
5																															
6																															

June	Sa	Su	M	Tu	W	Th	F	Sa	Su	M	Tu	W	Th	F	Sa	Su	M	Tu	W	Th	F	Sa	Su	M	Tu	W	Th	F	Sa	Su
2019	1	2	3	4	5	6	7	8	9	10	11	12	13	14	15	16	17	18	19	20	21	22	23	24	25	26	27	28	29	30
1																														
2																														
3																														
4																														
5																														
6																														

Jul	M	Tu	W	Th	F	Sa	Su	M	Tu	W	Th	F	Sa	Su	M	Tu	W	Th	F	Sa	Su	M	Tu	W	Th	F	Sa	Su	M	Tu	W
2019	1	2	3	4	5	6	7	8	9	10	11	12	13	14	15	16	17	18	19	20	21	22	23	24	25	26	27	28	29	30	31
1																															
2																															
3																															
4																															
5																															
6																															

Aug	Th	F	Sa	Su	M	Tu	W	Th	F	Sa	Su	M	Tu	W	Th	F	Sa	Su	M	Tu	W	Th	F	Sa	Su	M	Tu	W	Th	F	Sa
2019	1	2	3	4	5	6	7	8	9	10	11	12	13	14	15	16	17	18	19	20	21	22	23	24	25	26	27	28	29	30	31
1																															
2																															
3																															
4																															
5																															
6																															

- 1 Room "Pierre de Lave" - 3 person(s)
- 2 Room "Galet" - 2 person(s)
- 3 Room "Corail" - 2 person(s)
- 4 Room "Bambou" - 2 person(s)
- 5 Room "Cannes a Sucre" - 3 person(s)
- 6 Room "Vanille" - 2 person(s)



Guest House - Bed & Breakfast  
 Saint-Gilles-les-Hauts - Reunion Island  
**"Côté Cannelle"**

11  
[Book now](#)

Availability calendar - from : august 2019

Sep	Su	M	Tu	W	Th	F	Sa	Su	M	Tu	W	Th	F	Sa	Su	M	Tu	W	Th	F	Sa	Su	M							
2019	1	2	3	4	5	6	7	8	9	10	11	12	13	14	15	16	17	18	19	20	21	22	23	24	25	26	27	28	29	30
<b>1</b>	-	-	-	-	-	-	-	-	-	-	-	-	-	-	-	-	-	-	-	-	-	-	-	-	-	-	-	-	-	
<b>2</b>	-	-	-	-	-	-	-	-	-	-	-	-	-	-	-	-	-	-	-	-	-	-	-	-	-	-	-	-	-	
<b>3</b>	-	-	-	-	-	-	-	-	-	-	-	-	-	-	-	-	-	-	-	-	-	-	-	-	-	-	-	-	-	
<b>4</b>	-	-	-	-	-	-	-	-	-	-	-	-	-	-	-	-	-	-	-	-	-	-	-	-	-	-	-	-	-	
<b>5</b>	-	-	-	-	-	-	-	-	-	-	-	-	-	-	-	-	-	-	-	-	-	-	-	-	-	-	-	-	-	
<b>6</b>	-	-	-	-	-	-	-	-	-	-	-	-	-	-	-	-	-	-	-	-	-	-	-	-	-	-	-	-	-	

Oct	Tu	W	Th	F	Sa	Su	M	Tu	W	Th	F	Sa	Su	M	Tu	W	Th	F	Sa	Su	M	Tu	W	Th	F	Sa	Su	M	Tu	W	Th
2019	1	2	3	4	5	6	7	8	9	10	11	12	13	14	15	16	17	18	19	20	21	22	23	24	25	26	27	28	29	30	31
<b>1</b>	-	-	-	-	-	-	-	-	-	-	-	-	-	-	-	-	-	-	-	-	-	-	-	-	-	-	-	-	-	-	-
<b>2</b>	-	-	-	-	-	-	-	-	-	-	-	-	-	-	-	-	-	-	-	-	-	-	-	-	-	-	-	-	-	-	-
<b>3</b>	-	-	-	-	-	-	-	-	-	-	-	-	-	-	-	-	-	-	-	-	-	-	-	-	-	-	-	-	-	-	-
<b>4</b>	-	-	-	-	-	-	-	-	-	-	-	-	-	-	-	-	-	-	-	-	-	-	-	-	-	-	-	-	-	-	-
<b>5</b>	-	-	-	-	-	-	-	-	-	-	-	-	-	-	-	-	-	-	-	-	-	-	-	-	-	-	-	-	-	-	-
<b>6</b>	-	-	-	-	-	-	-	-	-	-	-	-	-	-	-	-	-	-	-	-	-	-	-	-	-	-	-	-	-	-	-

Nov	F	Sa	Su	M	Tu	W	Th	F	Sa	Su	M	Tu	W	Th	F	Sa	Su	M	Tu	W	Th	F	Sa							
2019	1	2	3	4	5	6	7	8	9	10	11	12	13	14	15	16	17	18	19	20	21	22	23	24	25	26	27	28	29	30
<b>1</b>	-	-	-	-	-	-	-	-	-	-	-	-	-	-	-	-	-	-	-	-	-	-	-	-	-	-	-	-	-	-
<b>2</b>	-	-	-	-	-	-	-	-	-	-	-	-	-	-	-	-	-	-	-	-	-	-	-	-	-	-	-	-	-	-
<b>3</b>	-	-	-	-	-	-	-	-	-	-	-	-	-	-	-	-	-	-	-	-	-	-	-	-	-	-	-	-	-	-
<b>4</b>	-	-	-	-	-	-	-	-	-	-	-	-	-	-	-	-	-	-	-	-	-	-	-	-	-	-	-	-	-	-
<b>5</b>	-	-	-	-	-	-	-	-	-	-	-	-	-	-	-	-	-	-	-	-	-	-	-	-	-	-	-	-	-	-
<b>6</b>	-	-	-	-	-	-	-	-	-	-	-	-	-	-	-	-	-	-	-	-	-	-	-	-	-	-	-	-	-	-

Dec	Su	M	Tu	W	Th	F	Sa	Su	M	Tu	W	Th	F	Sa	Su	M	Tu	W	Th	F	Sa	Su	M	Tu							
2019	1	2	3	4	5	6	7	8	9	10	11	12	13	14	15	16	17	18	19	20	21	22	23	24	25	26	27	28	29	30	31
<b>1</b>	-	-	-	-	-	-	-	-	-	-	-	-	-	-	-	-	-	-	-	-	-	-	-	-	-	-	-	-	-	-	
<b>2</b>	-	-	-	-	-	-	-	-	-	-	-	-	-	-	-	-	-	-	-	-	-	-	-	-	-	-	-	-	-	-	
<b>3</b>	-	-	-	-	-	-	-	-	-	-	-	-	-	-	-	-	-	-	-	-	-	-	-	-	-	-	-	-	-	-	
<b>4</b>	-	-	-	-	-	-	-	-	-	-	-	-	-	-	-	-	-	-	-	-	-	-	-	-	-	-	-	-	-	-	
<b>5</b>	-	-	-	-	-	-	-	-	-	-	-	-	-	-	-	-	-	-	-	-	-	-	-	-	-	-	-	-	-	-	
<b>6</b>	-	-	-	-	-	-	-	-	-	-	-	-	-	-	-	-	-	-	-	-	-	-	-	-	-	-	-	-	-	-	

- 1** Room "Pierre de Lave" - 3 person(s)
- 2** Room "Galet" - 2 person(s)
- 3** Room "Corail" - 2 person(s)
- 4** Room "Bambou" - 2 person(s)
- 5** Room "Cannes a Sucre" - 3 person(s)
- 6** Room "Vanille" - 2 person(s)

Guest House - Bed & Breakfast  
 Saint-Gilles-les-Hauts - Reunion Island  
**"Côté Cannelle"**

12  
[Book now](#)

Availability calendar - from : december 2019

Jan	W	Th	F	Sa	Su	M	Tu	W	Th	F	Sa	Su	M	Tu	W	Th	F	Sa	Su	M	Tu	W	Th	F	Sa	Su	M	Tu	W	Th	F
2020	1	2	3	4	5	6	7	8	9	10	11	12	13	14	15	16	17	18	19	20	21	22	23	24	25	26	27	28	29	30	31
1	-	-	-	-	-	-	-	-	-	-	-	-	-	-	-	-	-	-	-	-	-	-	-	-	-	-	-	-	-	-	-
2	-	-	-	-	-	-	-	-	-	-	-	-	-	-	-	-	-	-	-	-	-	-	-	-	-	-	-	-	-	-	-
3	-	-	-	-	-	-	-	-	-	-	-	-	-	-	-	-	-	-	-	-	-	-	-	-	-	-	-	-	-	-	-
4	-	-	-	-	-	-	-	-	-	-	-	-	-	-	-	-	-	-	-	-	-	-	-	-	-	-	-	-	-	-	-
5	-	-	-	-	-	-	-	-	-	-	-	-	-	-	-	-	-	-	-	-	-	-	-	-	-	-	-	-	-	-	-
6	-	-	-	-	-	-	-	-	-	-	-	-	-	-	-	-	-	-	-	-	-	-	-	-	-	-	-	-	-	-	-

Feb	Sa	Su	M	Tu	W	Th	F	Sa	Su	M	Tu	W	Th	F	Sa	Su	M	Tu	W	Th	F	Sa	Su	M	Tu	W	Th	F	Sa	
2020	1	2	3	4	5	6	7	8	9	10	11	12	13	14	15	16	17	18	19	20	21	22	23	24	25	26	27	28	29	
1	-	-	-	-	-	-	-	-	-	-	-	-	-	-	-	-	-	-	-	-	-	-	-	-	-	-	-	-	-	
2	-	-	-	-	-	-	-	-	-	-	-	-	-	-	-	-	-	-	-	-	-	-	-	-	-	-	-	-	-	-
3	-	-	-	-	-	-	-	-	-	-	-	-	-	-	-	-	-	-	-	-	-	-	-	-	-	-	-	-	-	-
4	-	-	-	-	-	-	-	-	-	-	-	-	-	-	-	-	-	-	-	-	-	-	-	-	-	-	-	-	-	-
5	-	-	-	-	-	-	-	-	-	-	-	-	-	-	-	-	-	-	-	-	-	-	-	-	-	-	-	-	-	-
6	-	-	-	-	-	-	-	-	-	-	-	-	-	-	-	-	-	-	-	-	-	-	-	-	-	-	-	-	-	-

Mar	Su	M	Tu	W	Th	F	Sa	Su	M	Tu	W	Th	F	Sa	Su	M	Tu	W	Th	F	Sa	Su	M	Tu	W	Th	F	Sa	Su	M	Tu
2020	1	2	3	4	5	6	7	8	9	10	11	12	13	14	15	16	17	18	19	20	21	22	23	24	25	26	27	28	29	30	31
1	-	-	-	-	-	-	-	-	-	-	-	-	-	-	-	-	-	-	-	-	-	-	-	-	-	-	-	-	-	-	-
2	-	-	-	-	-	-	-	-	-	-	-	-	-	-	-	-	-	-	-	-	-	-	-	-	-	-	-	-	-	-	-
3	-	-	-	-	-	-	-	-	-	-	-	-	-	-	-	-	-	-	-	-	-	-	-	-	-	-	-	-	-	-	-
4	-	-	-	-	-	-	-	-	-	-	-	-	-	-	-	-	-	-	-	-	-	-	-	-	-	-	-	-	-	-	-
5	-	-	-	-	-	-	-	-	-	-	-	-	-	-	-	-	-	-	-	-	-	-	-	-	-	-	-	-	-	-	-
6	-	-	-	-	-	-	-	-	-	-	-	-	-	-	-	-	-	-	-	-	-	-	-	-	-	-	-	-	-	-	-

Apr	W	Th	F	Sa	Su	M	Tu	W	Th	F	Sa	Su	M	Tu	W	Th	F	Sa	Su	M	Tu	W	Th							
2020	1	2	3	4	5	6	7	8	9	10	11	12	13	14	15	16	17	18	19	20	21	22	23	24	25	26	27	28	29	30
1	-	-	-	-	-	-	-	-	-	-	-	-	-	-	-	-	-	-	-	-	-	-	-	-	-	-	-	-	-	-
2	-	-	-	-	-	-	-	-	-	-	-	-	-	-	-	-	-	-	-	-	-	-	-	-	-	-	-	-	-	-
3	-	-	-	-	-	-	-	-	-	-	-	-	-	-	-	-	-	-	-	-	-	-	-	-	-	-	-	-	-	-
4	-	-	-	-	-	-	-	-	-	-	-	-	-	-	-	-	-	-	-	-	-	-	-	-	-	-	-	-	-	-
5	-	-	-	-	-	-	-	-	-	-	-	-	-	-	-	-	-	-	-	-	-	-	-	-	-	-	-	-	-	-
6	-	-	-	-	-	-	-	-	-	-	-	-	-	-	-	-	-	-	-	-	-	-	-	-	-	-	-	-	-	-

- 1 Room "Pierre de Lave" - 3 person(s)
- 2 Room "Galet" - 2 person(s)
- 3 Room "Corail" - 2 person(s)
- 4 Room "Bambou" - 2 person(s)
- 5 Room "Cannes a Sucre" - 3 person(s)
- 6 Room "Vanille" - 2 person(s)





















[Month : Next >>](#)



Guest House - Bed & Breakfast  
 Saint-Gilles-les-Hauts - Reunion Island  
**"Côté Cannelle"**

13  
[Book now](#)

Rental rates "Côté Cannelle"

Guest House - Bed & Breakfast Rates		Night	Weekend	week	2 weeks	Month
<b>1</b> Room "Pierre de Lave" 3 person(s) (2 adults - 1 children)		£79* ↓	-	£436*	-	-
		-	£158* (Saturday)	-	-	-
		£85* ↓	-	£467*	-	-
		£70* (Monday)	-	-	-	-
<b>2</b> Room "Galet" 2 person(s) (2 adults)		£79* ↓	£79*	£436*	-	-
		-	-	-	-	-
		£85* ↓	-	£436*	-	-
		£61* (Monday)	-	-	-	-
<b>3</b> Room "Corail" 2 person(s) (2 adults)		£70* ↓	-	£401*	-	-
		-	-	-	-	-
		£79* ↓	-	£436*	-	-
		-	-	-	-	-
<b>4</b> Room "Bambou" 2 person(s) (2 adults)		£70* ↓	-	£401*	-	-
		-	-	-	-	-
		£79* ↓	-	£436*	-	-
		-	-	-	-	-
<b>5</b> Room "Cannes a Sucre" 3 person(s) (2 adults - 1 children)		£70* ↓	-	£401*	-	-
		-	-	-	-	-
		£79* ↓	-	£436*	-	-
		-	-	-	-	-

Guest House - Bed & Breakfast  
 Saint-Gilles-les-Hauts - Reunion Island  
**"Côté Cannelle"**

14  
[Book now](#)

Rental rates "Côté Cannelle"

Guest House - Bed & Breakfast Rates		Night	Weekend	week	2 weeks	Month
<b>6</b> Room "Vanille" 2 person(s) (2 adults) 		£70* ↓	-	£401*	-	-
		-	-	-	-	-
		£79* ↓	-	£436*	-	-
		-	-	-	-	-

 Low season     
  Mid season     
  High season     
  Promotional period

↓ Reducing rates      (Check-in day)

[Book now](#)

Booking conditions

• Reservation

→ Payment balance :  
 on handing over the keys

• rentals

→ Service charges to be added  
 → Day tax in addition  
 → Cleaning charge levy on departure : £4\*  
 → Anticipated supplement for :  
 - supplementary bed(s)  
 - hammam, sauna

[▶ Book now](#)

[▶ Contact the owner](#)

Accepted methods of payment

• Visa/Delta/Electron • Bank transfer (wire)  
 • MasterCard/EuroCard • American Express • Cheque • Cash

Contact directly the property owners

[www.ihacom.co.uk](http://www.ihacom.co.uk)  
**Advert No.**  
**70591**  
**>> Book now <<**

Contact

Spoken languages



\* Converted at the rate indicated : €100 = \$116.85 = £89

Advert No. 70591

[www.ihacom.co.uk](http://www.ihacom.co.uk)

