

Guest House - Bed & Breakfast Olinda "Olindapart"

You want to stay at Olinda for a few days or for a long time? We offer our studios.



Charming House, detached, 1 floor,
separate entrance

Setting : historical, tropical

Guest Room(s) : 5

Receive up to : **from 1 to 14**
guests

- Studio Flat "Pitanga"
4 person(s)
- Studio Flat "Caja"
3 person(s)
- Studio Flat "Manga"
2 person(s)
- Studio Flat "Carambola"
2 person(s)
- Studio Flat "Melancia"
3 person(s)

Olinda - Pernambuco (PE) - North East Region

Brazil

Reservation : +55 (81) 34294183 (Brazil)

www.ihacom.co.uk

Advert No. 38680



Guest House - Bed & Breakfast



Charming House, detached, 1 floor, separate entrance

- **Ideal for all age groups, singles**
- **View :** garden/park
- **Setting :** historical, tropical
- **Exposure :** South

" With simplicity and comfort, the House is organized in rooms equipped with a bathroom, a kitchenette with hob and fridge, table-top, and an independent entrance. We have paid particular attention to the individual comfort of guests with: Wifi Internet on request, hot shower, ceiling fan, and air conditioning. Sheets and towels are provided. weekly cleaning. A key artistic and original decorates every room in the House. You can use the paint shop. Ede can tell you the best artists for courses of paint, paper mache, sculptures, etc... and Portuguese language. Welcome to our House. We wish you an excellent stay in Olinda. "

Surroundings & location



Seaside



Fishing



Festival



Culture

" Olinda and his madness of the Carnival, one of the most popular of the Brazil. Founded in 1517, Olinda is one of the oldest cities of the Brazil. Its narrow, winding streets are lined with small colorful houses and a multitude of churches and monasteries. No samba, in Olinda: dance the famous frevo. A style of music generally played by a procession of drums: maracatu. And then there's all the artists: painters, sculptors... "

Leisure

- **Leisure activities less than 20 km / 12 miles :**

Bathing, scuba diving, jet ski, sailing, fishing

Surroundings

- **Locality :**

Sea/ocean
Sandy beach

- **Amenities :**

Town centre 330'
Bus stop / bus station <165'
Car rental
Breadshop 990'
Local shops 330'
Supermarket 1.25mi.
Hairdressing salon
Bank 0.62mi.
Cash point 0.62mi.
Hospital 3mi.

Guest House - Bed & Breakfast
Olinda - Brazil
"Olindapart"

3

[Book now](#)

Exterior

- Ground surface :
4,300 Sq.ft.
- Exterior facilities at guests disposal :
Terrace, covered terrace, balcony
- Outside at the guests disposal :
Private courtyard, enclosed grounds, garden, tropical garden
- Exterior amenities at guests disposal :
Garden table(s)

Interior

- Receive up to :
from 1 to 14 guests, 5 Guest Room(s)
- Liveable floor area :
3,300 Sq.ft.
- Interior comforts at guests disposal :
Crockery/cuttlery, wifi, ceiling paddle fan

Services

- Restauration :
Breakfast
- Washing :
Sheets, Towels, Linen, Pillows
- House :
Cleaning supplement (1 X / per week +£4*),
Cleaning on departure
- Personnel :
Chauffeur supplement, Laundry supplement

For your guidance

- For your guidance
Children welcome
Non smoking rental, mobile telephone network coverage, alcohol not permitted
Water : hot/cold
Local voltage supply : 220-240V / 50Hz
Electricity supply : mains

Advert No. 38680

www.ihacom.co.uk



[>> HOLIDAY LETTINGS](#)

[BOOK DIRECT WITH THE OWNERS](#)

Studio Flat "Pitanga"



4 person(s) : 4 adults

Liveable floor area : 345 Sq.ft.

Ideal for group



shower room

• **Interior layout and facilities :**

1 shower room, 1 WC, kitchenette, dining area

• **Sleeps - bed(s) :**

1 double bed(s), 2 single bed(s)

• **Guest facilities and furnishings :**

Electric hobs, wifi, wardrobe, Hanging wardrobe, refridgerator, fully air conditioned, mobile cool air fan, Glazed in area, Curtains

• **Exterior private facilities :**

Summer kitchen, BBQ

Studio Flat "Caja"



3 person(s) : 3 adults

Liveable floor area : 323 Sq.ft.

Ideal for couples with baby

• **Interior layout and facilities :**

1 shower room, 1 WC, kitchenette, dining area, patio

• **Sleeps - bed(s) :**

1 double bed(s), 1 divan 1 pers

• **View :**

Sea/ocean

• **Guest facilities and furnishings :**

Hanging wardrobe, refridgerator, fully air conditioned, mobile cool air fan

Studio Flat "Manga"



2 person(s) : 2 adults

Liveable floor area : 300 Sq.ft.

•Interior layout and facilities :

1 shower room, 1 WC, kitchenette, dining area

•Sleeps - bed(s) :

1 double bed(s)

•View :

Sea/ocean

•Guest facilities and furnishings :

Electric hobs, wifi, refridgerator, fully air conditioned, mobile cool air fan

•Exterior private facilities :

Terrace, summer kitchen, covered terrace, BBQ, 4 garden seat(s), outside toilet facilities

Studio Flat "Carambola"



2 person(s) : 2 adults

Liveable floor area : 300 Sq.ft.

Ideal for couples with baby

•Interior layout and facilities :

1 shower room, 1 WC, kitchenette, dining area

•Sleeps - bed(s) :

1 double bed(s)

•View :

Not overlooked

•Facilities exclusive to :

Separate entrance

•Guest facilities and furnishings :

Electric hobs, wifi, Hanging wardrobe, refridgerator, fully air conditioned, mobile cool air fan, Curtains

•Exterior private facilities :

Summer kitchen, covered terrace 215 Sq.ft., sundeck, BBQ, garden table(s), 4 garden seat(s)

Studio Flat "Melancia"



3 person(s)

•Interior layout and facilities :

1 shower room, 1 WC, kitchenette, dining area, loggia

•Sleeps - bed(s) :

1 double bed(s), 1 single bed(s)

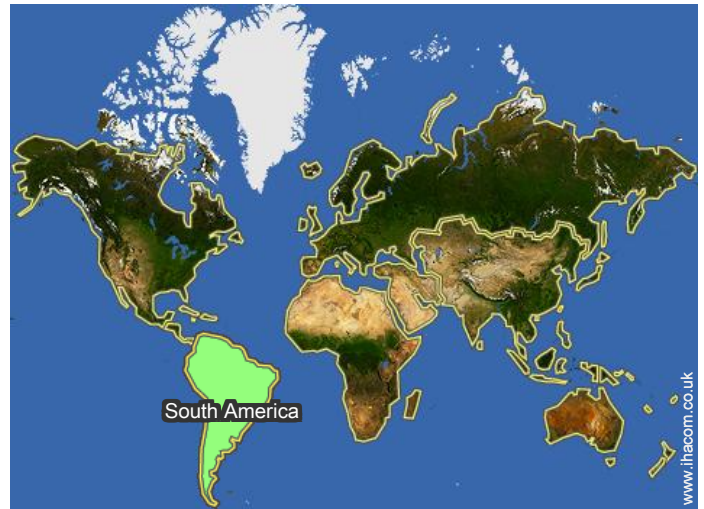
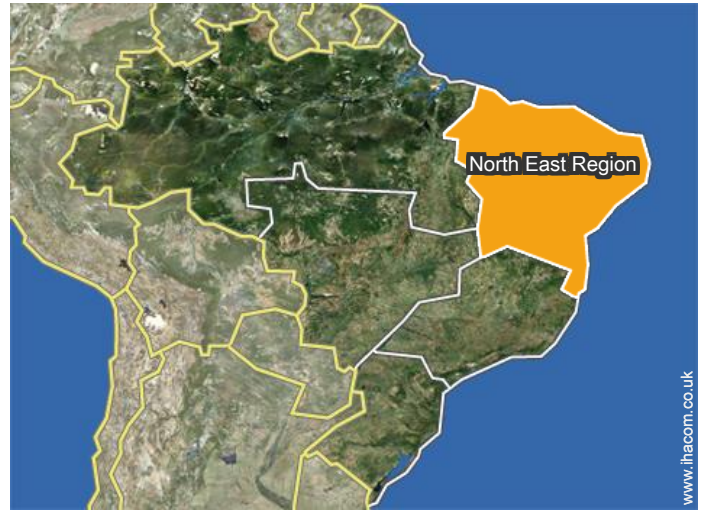
•Guest facilities and furnishings :

Electric hobs, wifi, wardrobe, cupboard, Hanging wardrobe, refridgerator, fully air conditioned, ceiling paddle fan, Curtains

•Exterior private facilities :

Summer kitchen, covered terrace 65 Sq.ft., BBQ, garden table(s)

Location



Location & Access

"Colonial House, located in a residential area of the historic site of Olinda, heritage of humanity, surrounded by trees, with a pleasant garden, a large terrace collective. And well served by public transport and taxis."



GPS coordinates in degrees, minutes, seconds: Latitude 8°1'7"S - Longitude 34° 51'2"W (Dwelling)

Address

→ 10 de novembro 93

● **Airport Recife Guararapes Gilberto Freyre**

→ Recife, Pernambuco, North East Region, Brazil

→ Distance : 9mi.

→ Time : 30'

● Recife : (7,5mi.)

Contact

Spoken languages



Guest House - Bed & Breakfast
Pernambuco - North East Region
"Olindapart"

[Book now](#)

Availability calendar - from : november 2017

Nov	W	Th	F	Sa	Su	M	Tu	W	Th	F	Sa	Su	M	Tu	W	Th	F	Sa	Su	M	Tu	W	Th	F	Sa	Su	M	Tu	W	Th	
2017	1	2	3	4	5	6	7	8	9	10	11	12	13	14	15	16	17	18	19	20	21	22	23	24	25	26	27	28	29	30	
1																															
2																															
3																															
4																															
5																															

Dec	F	Sa	Su	M	Tu	W	Th	F	Sa	Su	M	Tu	W	Th	F	Sa	Su	M	Tu	W	Th	F	Sa	Su	M	Tu	W	Th	F	Sa	Su
2017	1	2	3	4	5	6	7	8	9	10	11	12	13	14	15	16	17	18	19	20	21	22	23	24	25	26	27	28	29	30	31
1																															
2																															
3																															
4																															
5																															

Jan	M	Tu	W	Th	F	Sa	Su	M	Tu	W	Th	F	Sa	Su	M	Tu	W	Th	F	Sa	Su	M	Tu	W	Th	F	Sa	Su	M	Tu	W
2018	1	2	3	4	5	6	7	8	9	10	11	12	13	14	15	16	17	18	19	20	21	22	23	24	25	26	27	28	29	30	31
1																															
2																															
3																															
4																															
5																															

Feb	Th	F	Sa	Su	M	Tu	W	Th	F	Sa	Su	M	Tu	W	Th	F	Sa	Su	M	Tu	W	Th	F	Sa	Su	M	Tu	W	
2018	1	2	3	4	5	6	7	8	9	10	11	12	13	14	15	16	17	18	19	20	21	22	23	24	25	26	27	28	
1																													
2																													
3																													
4																													
5																													

Mar	Th	F	Sa	Su	M	Tu	W	Th	F	Sa	Su	M	Tu	W	Th	F	Sa	Su	M	Tu	W	Th	F	Sa	Su	M	Tu	W	Th	F	Sa
2018	1	2	3	4	5	6	7	8	9	10	11	12	13	14	15	16	17	18	19	20	21	22	23	24	25	26	27	28	29	30	31
1																															
2																															
3																															
4																															
5																															

- 1 Studio Flat "Melancia" - 3 person(s)
- 2 Studio Flat "Pitanga" - 4 person(s)
- 3 Studio Flat "Carambola" - 2 person(s)
- 4 Studio Flat "Manga" - 2 person(s)
- 5 Studio Flat "Caja" - 3 person(s)

Reserved Mid season



Guest House - Bed & Breakfast
Olinda - Brazil
"Olindapart"

[Book now](#)

Availability calendar - from : march 2018

Apr	Su	M	Tu	W	Th	F	Sa	Su	M	Tu	W	Th	F	Sa	Su	M	Tu	W	Th	F	Sa	Su	M							
2018	1	2	3	4	5	6	7	8	9	10	11	12	13	14	15	16	17	18	19	20	21	22	23	24	25	26	27	28	29	30
1	-	-	-	-	-	-	-	-	-	-	-	-	-	-	-	-	-	-	-	-	-	-	-	-	-	-	-	-	-	
2	-	-	-	-	-	-	-	-	-	-	-	-	-	-	-	-	-	-	-	-	-	-	-	-	-	-	-	-	-	
3	-	-	-	-	-	-	-	-	-	-	-	-	-	-	-	-	-	-	-	-	-	-	-	-	-	-	-	-	-	
4	-	-	-	-	-	-	-	-	-	-	-	-	-	-	-	-	-	-	-	-	-	-	-	-	-	-	-	-	-	
5	-	-	-	-	-	-	-	-	-	-	-	-	-	-	-	-	-	-	-	-	-	-	-	-	-	-	-	-	-	

May	Tu	W	Th	F	Sa	Su	M	Tu	W	Th	F	Sa	Su	M	Tu	W	Th	F	Sa	Su	M	Tu	W	Th							
2018	1	2	3	4	5	6	7	8	9	10	11	12	13	14	15	16	17	18	19	20	21	22	23	24	25	26	27	28	29	30	31
1	-	-	-	-	-	-	-	-	-	-	-	-	-	-	-	-	-	-	-	-	-	-	-	-	-	-	-	-	-	-	
2	-	-	-	-	-	-	-	-	-	-	-	-	-	-	-	-	-	-	-	-	-	-	-	-	-	-	-	-	-		
3	-	-	-	-	-	-	-	-	-	-	-	-	-	-	-	-	-	-	-	-	-	-	-	-	-	-	-	-	-		
4	-	-	-	-	-	-	-	-	-	-	-	-	-	-	-	-	-	-	-	-	-	-	-	-	-	-	-	-	-		
5	-	-	-	-	-	-	-	-	-	-	-	-	-	-	-	-	-	-	-	-	-	-	-	-	-	-	-	-	-		

June	F	Sa	Su	M	Tu	W	Th	F	Sa	Su	M	Tu	W	Th	F	Sa	Su	M	Tu	W	Th	F	Sa							
2018	1	2	3	4	5	6	7	8	9	10	11	12	13	14	15	16	17	18	19	20	21	22	23	24	25	26	27	28	29	30
1	-	-	-	-	-	-	-	-	-	-	-	-	-	-	-	-	-	-	-	-	-	-	-	-	-	-	-	-	-	
2	-	-	-	-	-	-	-	-	-	-	-	-	-	-	-	-	-	-	-	-	-	-	-	-	-	-	-	-	-	
3	-	-	-	-	-	-	-	-	-	-	-	-	-	-	-	-	-	-	-	-	-	-	-	-	-	-	-	-	-	
4	-	-	-	-	-	-	-	-	-	-	-	-	-	-	-	-	-	-	-	-	-	-	-	-	-	-	-	-	-	
5	-	-	-	-	-	-	-	-	-	-	-	-	-	-	-	-	-	-	-	-	-	-	-	-	-	-	-	-	-	

Jul	Su	M	Tu	W	Th	F	Sa	Su	M	Tu	W	Th	F	Sa	Su	M	Tu	W	Th	F	Sa	Su	M	Tu							
2018	1	2	3	4	5	6	7	8	9	10	11	12	13	14	15	16	17	18	19	20	21	22	23	24	25	26	27	28	29	30	31
1	-	-	-	-	-	-	-	-	-	-	-	-	-	-	-	-	-	-	-	-	-	-	-	-	-	-	-	-	-	-	
2	-	-	-	-	-	-	-	-	-	-	-	-	-	-	-	-	-	-	-	-	-	-	-	-	-	-	-	-	-	-	
3	-	-	-	-	-	-	-	-	-	-	-	-	-	-	-	-	-	-	-	-	-	-	-	-	-	-	-	-	-	-	
4	-	-	-	-	-	-	-	-	-	-	-	-	-	-	-	-	-	-	-	-	-	-	-	-	-	-	-	-	-	-	
5	-	-	-	-	-	-	-	-	-	-	-	-	-	-	-	-	-	-	-	-	-	-	-	-	-	-	-	-	-	-	

Aug	W	Th	F	Sa	Su	M	Tu	W	Th	F	Sa	Su	M	Tu	W	Th	F	Sa	Su	M	Tu	W	Th	F							
2018	1	2	3	4	5	6	7	8	9	10	11	12	13	14	15	16	17	18	19	20	21	22	23	24	25	26	27	28	29	30	31
1	-	-	-	-	-	-	-	-	-	-	-	-	-	-	-	-	-	-	-	-	-	-	-	-	-	-	-	-	-	-	
2	-	-	-	-	-	-	-	-	-	-	-	-	-	-	-	-	-	-	-	-	-	-	-	-	-	-	-	-	-	-	
3	-	-	-	-	-	-	-	-	-	-	-	-	-	-	-	-	-	-	-	-	-	-	-	-	-	-	-	-	-	-	
4	-	-	-	-	-	-	-	-	-	-	-	-	-	-	-	-	-	-	-	-	-	-	-	-	-	-	-	-	-	-	
5	-	-	-	-	-	-	-	-	-	-	-	-	-	-	-	-	-	-	-	-	-	-	-	-	-	-	-	-	-	-	

- Studio Flat "Melancia" - 3 person(s)
- Studio Flat "Carambola" - 2 person(s)
- Studio Flat "Caja" - 3 person(s)
- Studio Flat "Pitanga" - 4 person(s)
- Studio Flat "Manga" - 2 person(s)

Reserved Mid season



Guest House - Bed & Breakfast
North East Region - Olinda
"Olindapart"

10
[Book now](#)

Availability calendar - from : august 2018

Sep	Sa	Su	M	Tu	W	Th	F	Sa	Su	M	Tu	W	Th	F	Sa	Su	M	Tu	W	Th	F	Sa	Su	M	Tu	W	Th	F	Sa	Su
2018	1	2	3	4	5	6	7	8	9	10	11	12	13	14	15	16	17	18	19	20	21	22	23	24	25	26	27	28	29	30
1	-	-	-	-	-	-	-	-	-	-	-	-	-	-	-	-	-	-	-	-	-	-	-	-	-	-	-	-	-	-
2	-	-	-	-	-	-	-	-	-	-	-	-	-	-	-	-	-	-	-	-	-	-	-	-	-	-	-	-	-	-
3	-	-	-	-	-	-	-	-	-	-	-	-	-	-	-	-	-	-	-	-	-	-	-	-	-	-	-	-	-	-
4	-	-	-	-	-	-	-	-	-	-	-	-	-	-	-	-	-	-	-	-	-	-	-	-	-	-	-	-	-	-
5	-	-	-	-	-	-	-	-	-	-	-	-	-	-	-	-	-	-	-	-	-	-	-	-	-	-	-	-	-	-

Oct	M	Tu	W	Th	F	Sa	Su	M	Tu	W	Th	F	Sa	Su	M	Tu	W	Th	F	Sa	Su	M	Tu	W	Th	F	Sa	Su	M	Tu	W
2018	1	2	3	4	5	6	7	8	9	10	11	12	13	14	15	16	17	18	19	20	21	22	23	24	25	26	27	28	29	30	31
1	-	-	-	-	-	-	-	-	-	-	-	-	-	-	-	-	-	-	-	-	-	-	-	-	-	-	-	-	-	-	-
2	-	-	-	-	-	-	-	-	-	-	-	-	-	-	-	-	-	-	-	-	-	-	-	-	-	-	-	-	-	-	-
3	-	-	-	-	-	-	-	-	-	-	-	-	-	-	-	-	-	-	-	-	-	-	-	-	-	-	-	-	-	-	-
4	-	-	-	-	-	-	-	-	-	-	-	-	-	-	-	-	-	-	-	-	-	-	-	-	-	-	-	-	-	-	-
5	-	-	-	-	-	-	-	-	-	-	-	-	-	-	-	-	-	-	-	-	-	-	-	-	-	-	-	-	-	-	-

- 1 Studio Flat "Melancia" - 3 person(s)
- 2 Studio Flat "Pitanga" - 4 person(s)
- 3 Studio Flat "Carambola" - 2 person(s)
- 4 Studio Flat "Manga" - 2 person(s)
- 5 Studio Flat "Caja" - 3 person(s)

 Reserved Mid season

[Month : Next >>](#)

Rental rates "Olindapart"

Guest House - Bed & Breakfast Rates		Night	Weekend	week	2 weeks	Month
1	Studio Flat "Melancia" 3 person(s) 	£27*	-	£148*	£275*	£472*
2	Studio Flat "Pitanga" 4 person(s) (4 adults) 	£30*	-	£176*	£331*	£567*
3	Studio Flat "Carambola" 2 person(s) (2 adults) 	£21*	-	£116*	£220*	£378*

Guest House - Bed & Breakfast
Pernambuco - Olinda
"Olindapart"

11
[Book now](#)

Rental rates "Olindapart"

Guest House - Bed & Breakfast Rates			Night	Weekend	week	2 weeks	Month
4	Studio Flat "Manga" 2 person(s) (2 adults)		£21*	-	£116*	£220*	£378*
5	Studio Flat "Caja" 3 person(s) (3 adults)		£27*	-	£148*	£275*	£472*

 Low season

[Book now](#)

Booking conditions

• Reservation

- Payment made upon reservation : 50% of rental sum
- Payment balance : on handing over the keys
- Deposit required : £90*

• rentals

- Service charges to be added
- Anticipated supplement for : - supplementary bed(s)

[▶ Book now](#)

[▶ Contact the owner](#)

Accepted methods of payment

- International Money Order • Bank transfer (wire) • PayPal • Travellers Cheques • Cash

Contact directly the property owners

www.ihacom.co.uk

Advert No.

38680

>> Book now <<

Contact

Spoken languages



* Converted at the rate indicated : €100 = \$117.29 = £89.59

Advert No. 38680

www.ihacom.co.uk



>> HOLIDAY LETTINGS

BOOK DIRECT WITH THE OWNERS