

Guest House - Bed & Breakfast Merkem "De paprente"

The B&B is located between Ypres and Diksmuide. Really centrally located to visit the Westhoek and the history of the 1st World war.



Meublés de Tourisme (1 star)

Flat-Apartments 1st floor, separate entrance, in a(an) House 1 floor

Setting : pleasant, rural

Guest Room(s) : 1

Receive up to : from 1 to 6 guests

- Studio Flat "De paprente"
4 person(s)

Merkem - West Flanders - Flanders

Belgium

Advert No. 48000

Reservation : +32 (0) 498104150 (Belgium)

www.ihacom.co.uk



>> HOLIDAY LETTINGS

BOOK DIRECT WITH THE OWNERS

Guest House - Bed & Breakfast



Flat-Apartments 1st floor, separate entrance, in a(an) House 1 floor

- Ideal for retired people, couples
- View : country side, garden/park, farmland, forest, village
- Setting : pleasant, rural

" After a day visiting The Westhoek you can enjoy pleasant on the spacious private terrace, equipped with garden furniture and sun loungers. The B&B is located in a quiet rural turn. In the distance one can see the Yzertoren and the water reserve The Bailey. Our Merkemse pride: Beukelaere Molen you can no longer see, only the remains, he will soon be restored. "

Assets

- baby equipment :
Baby chair, baby bath, playpen



view from the bedroom

Surroundings & location



Countryside



Fishing

" The coast, the hill country, Ieper, Diksmuide, Veurne, Kortrijk, Bruges are at max. one hour from us. Go hiking in the wooded area: The Bailey, the forest houthulst. Cycling is certainly one of the possibilities. Or just by car or moto tour before and after front of WWI; the many new roads are extremely suitable; You can rent a motorbike through us (by appointment) to spend a day to discover the Westhoek (package: Elsie and Mairi, Angels of Flanders Fields). "

Leisure

- Leisure activities less than 20 km / 12 miles :

Pedalo, pathway, coastal/forest paths, hiking, horse-drawn carriage, horse trekking, angling

Surroundings

- Locality :

Heated swimming pool 6mi.
Sea/ocean 18.5mi.
Public swimming pool 6mi.
9 hole golf course 9mi.
Forest 2.5mi.
Marina 6mi.

- Amenities :

Village centre 0.62mi.
Bus stop / bus station 330'
Bike/mountain bike hire 6mi.
Breadshop 0.62mi.
Caterer 0.62mi.
Local shops 0.5mi.
Supermarket 0.5mi.
Hairdressing salon 0.62mi.
Bank 0.5mi.
Cash point 0.5mi.
Chemist 0.93mi.
Doctor 0.62mi.
Nurse 1.25mi.
Hospital 9mi.



Kitchen Area



living room

Guest House - Bed & Breakfast Merkem - Belgium "De paprente"

3

[Book now](#)



Interior layout at guests disposal

Exterior

- **Exterior facilities at guests disposal :**
Roof terrace 270 Sq.ft., gazebo
- **Outside at the guests disposal :**
Private courtyard, enclosed grounds, garden 2,150 Sq.ft., lawn 270 Sq.ft., kitchen garden 4,300 Sq.ft.
- **Exterior amenities at guests disposal :**
BBQ, garden table(s), garden seat(s), trolley on wheels, parasol, garden seated area, chaise(s) longue(s)

Interior

- **Receive up to :**
from 1 to 6 guests, 1 Guest Room(s)
- **Liveable floor area :**
380 Sq.ft.
- **Interior comforts at guests disposal :**
T.V., crockery/cutlery, DVD player, board games, computer, cable/satelite, radio alarmclock, mobile cool air fan, central heating



mezzanine

Services

- **Restauration :**
Breakfast supplement (+£7*)
- **Washing :**
Sheets, Towels, Linen, Quilt(s), Pillows
- **House :**
Cleaning on departure supplement (+£27*), Parking

For your guidance

- **For your guidance**
Children welcome
Pets accepted under certain conditions (ask the owner)
Present on site : pets, farm animals
Non smoking rental
Water : hot/cold
Local voltage supply : 220V / 60Hz
Electricity supply : mains
- **Handicapped people welcome**
Fitted out for the disabled : hard of hearing, mentally



dining area

Advert No. 48000

www.ihacom.co.uk



[>> HOLIDAY LETTINGS](#)

[BOOK DIRECT WITH THE OWNERS](#)

Studio Flat "De paprente"



4 person(s) : 2 adults - 2 children

Liveable floor area : 380 Sq.ft.

Ideal for couples



dining area

•Interior layout and facilities :

Sleeping area, 1 shower room, 1 WC, sitting room, american style kitchen, dining area, mezzanine, tv room

•Sleeps - bed(s) :

2 double bed(s), 1 foldaway bed(s) 2 pers, 2 baby cot(s)

•View :

Panoramic, country side, garden/park, courtyard, village, monument

•Facilities exclusive to :

Separate entrance

•Guest facilities and furnishings :

T.V., mini-bar, electric coffee maker, DVD player, electric kettle, board games, telephone, computer, cable/satelite, electric hobs, wifi, oven, wardrobe, cupboard, micro-wave oven, radio alarmclock, hair dryer, reffridgerator, fly screens, mobile cool air fan, electric heating, Skylights, Curtains

•baby equipment :

Baby chair, baby potty, playpen

•Exterior private facilities :

Terrace 380 Sq.ft., roof terrace 270 Sq.ft., BBQ, garden table(s), 4 garden seat(s), parasol, 2 chaise(s) longue(s)



kitchen



sleeping nook



sitting room



view from the bedroom

Photo album - 1



House



view from the bedroom



living room



Kitchen Area

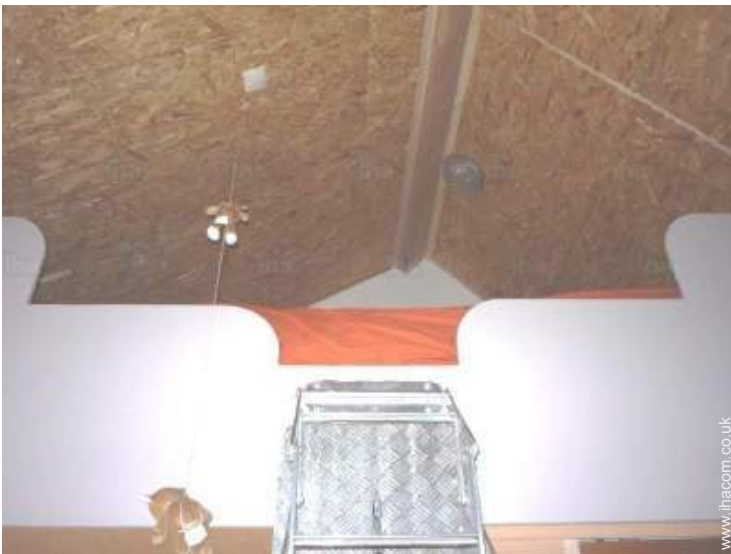
Photo album - 2



dining area



Interior layout at guests disposal



mezzanine



view from the flat

[Favourite photo gallery - 1](#)



June 2011



June 2011



June 2011



June 2011



June 2011

Favourite photo gallery - 2



June 2011



June 2011



June 2011

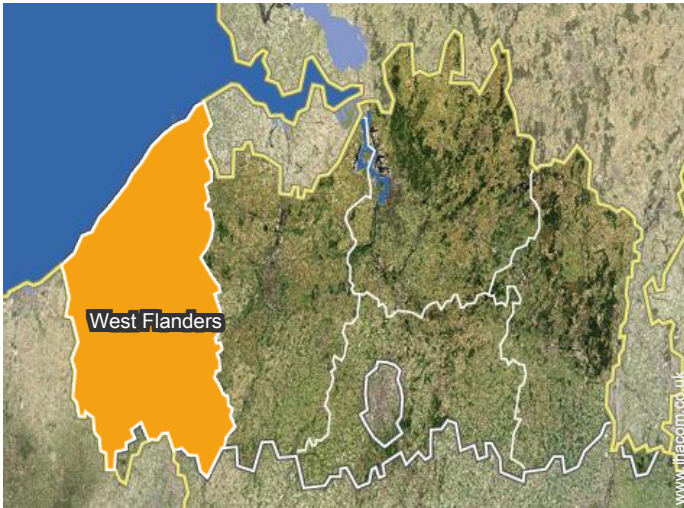


June 2011



June 2011

Location



Location & Access

" Follow the motorway to Ieper, exit in the direction of Diksmuide. About 10 to 11 km turn left, follow direction Merkem, past the Church, 500 m. "



GPS coordinates in degrees, minutes, seconds: Latitude 50°57'32"N - Longitude 2°50'47"E (Dwelling)

Address

→ Westbroekstraat 80
8650 Merkem

• Motorway (junction) A17

→ Ypres, West Flanders, Flanders, Belgium
→ Distance : 7mi.
→ Time : 15'

- Diksmuide : (6mi.)
- Ypres : (7,5mi.)
- Roeselare : (15.5mi.)

Contact

Spoken languages



Guest House - Bed & Breakfast
Flanders - Merkem
"De paprente"

10

[Book now](#)

Availability calendar - from : march 2021

Mar	M	Tu	W	Th	F	Sa	Su	M	Tu	W	Th	F	Sa	Su	M	Tu	W	Th	F	Sa	Su	M	Tu	W							
2021	1	2	3	4	5	6	7	8	9	10	11	12	13	14	15	16	17	18	19	20	21	22	23	24	25	26	27	28	29	30	31
1					-	-	-	-	-	-	-	-	-	-	-	-	-	-	-	-	-	-	-	-	-	-	-	-	-	-	

Apr	Th	F	Sa	Su	M	Tu	W	Th	F	Sa	Su	M	Tu	W	Th	F	Sa	Su	M	Tu	W	Th	F							
2021	1	2	3	4	5	6	7	8	9	10	11	12	13	14	15	16	17	18	19	20	21	22	23	24	25	26	27	28	29	30
1	-	-	-	-	-	-	-	-	-	-	-	-	-	-	-	-	-	-	-	-	-	-	-	-	-	-	-	-	-	-

May	Sa	Su	M	Tu	W	Th	F	Sa	Su	M	Tu	W	Th	F	Sa	Su	M	Tu	W	Th	F	Sa	Su	M							
2021	1	2	3	4	5	6	7	8	9	10	11	12	13	14	15	16	17	18	19	20	21	22	23	24	25	26	27	28	29	30	31
1	-	-	-	-	-	-	-	-	-	-	-	-	-	-	-	-	-	-	-	-	-	-	-	-	-	-	-	-	-	-	

June	Tu	W	Th	F	Sa	Su	M	Tu	W	Th	F	Sa	Su	M	Tu	W	Th	F	Sa	Su	M	Tu	W							
2021	1	2	3	4	5	6	7	8	9	10	11	12	13	14	15	16	17	18	19	20	21	22	23	24	25	26	27	28	29	30
1	-	-	-	-	-	-	-	-	-	-	-	-	-	-	-	-	-	-	-	-	-	-	-	-	-	-	-	-	-	-

Jul	Th	F	Sa	Su	M	Tu	W	Th	F	Sa	Su	M	Tu	W	Th	F	Sa	Su	M	Tu	W	Th	F	Sa							
2021	1	2	3	4	5	6	7	8	9	10	11	12	13	14	15	16	17	18	19	20	21	22	23	24	25	26	27	28	29	30	31
1	-	-	-	-	-	-	-	-	-	-	-	-	-	-	-	-	-	-	-	-	-	-	-	-	-	-	-	-	-	-	

Aug	Su	M	Tu	W	Th	F	Sa	Su	M	Tu	W	Th	F	Sa	Su	M	Tu	W	Th	F	Sa	Su	M	Tu							
2021	1	2	3	4	5	6	7	8	9	10	11	12	13	14	15	16	17	18	19	20	21	22	23	24	25	26	27	28	29	30	31
1	-	-	-	-	-	-	-	-	-	-	-	-	-	-	-	-	-	-	-	-	-	-	-	-	-	-	-	-	-	-	

Sep	W	Th	F	Sa	Su	M	Tu	W	Th	F	Sa	Su	M	Tu	W	Th	F	Sa	Su	M	Tu	W	Th							
2021	1	2	3	4	5	6	7	8	9	10	11	12	13	14	15	16	17	18	19	20	21	22	23	24	25	26	27	28	29	30
1	-	-	-	-	-	-	-	-	-	-	-	-	-	-	-	-	-	-	-	-	-	-	-	-	-	-	-	-	-	-

Oct	F	Sa	Su	M	Tu	W	Th	F	Sa	Su	M	Tu	W	Th	F	Sa	Su	M	Tu	W	Th	F	Sa	Su							
2021	1	2	3	4	5	6	7	8	9	10	11	12	13	14	15	16	17	18	19	20	21	22	23	24	25	26	27	28	29	30	31
1	-	-	-	-	-	-	-	-	-	-	-	-	-	-	-	-	-	-	-	-	-	-	-	-	-	-	-	-	-	-	

Nov	M	Tu	W	Th	F	Sa	Su	M	Tu	W	Th	F	Sa	Su	M	Tu	W	Th	F	Sa	Su	M	Tu							
2021	1	2	3	4	5	6	7	8	9	10	11	12	13	14	15	16	17	18	19	20	21	22	23	24	25	26	27	28	29	30
1	-	-	-	-	-	-	-	-	-	-	-	-	-	-	-	-	-	-	-	-	-	-	-	-	-	-	-	-	-	-

Dec	W	Th	F	Sa	Su	M	Tu	W	Th	F	Sa	Su	M	Tu	W	Th	F	Sa	Su	M	Tu	W	Th	F							
2021	1	2	3	4	5	6	7	8	9	10	11	12	13	14	15	16	17	18	19	20	21	22	23	24	25	26	27	28	29	30	31
1	-	-	-	-	-	-	-	-	-	-	-	-	-	-	-	-	-	-	-	-	-	-	-	-	-	-	-	-	-	-	



Guest House - Bed & Breakfast
West Flanders - Merkem
"De paprente"

11
[Book now](#)







Availability calendar - from : december 2021

Jan	Sa	Su	M	Tu	W	Th	F	Sa	Su	M	Tu	W	Th	F	Sa	Su	M	Tu	W	Th	F	Sa	Su	M							
2022	1	2	3	4	5	6	7	8	9	10	11	12	13	14	15	16	17	18	19	20	21	22	23	24	25	26	27	28	29	30	31
1	-	-	-	-	-	-	-	-	-	-	-	-	-	-	-	-	-	-	-	-	-	-	-	-	-	-	-	-	-	-	

Feb	Tu	W	Th	F	Sa	Su	M	Tu	W	Th	F	Sa	Su	M	Tu	W	Th	F	Sa	Su	M							
2022	1	2	3	4	5	6	7	8	9	10	11	12	13	14	15	16	17	18	19	20	21	22	23	24	25	26	27	28
1	-	-	-	-	-	-	-	-	-	-	-	-	-	-	-	-	-	-	-	-	-	-	-	-	-	-	-	-

[Month : Next >>](#)

Rental rates "De paprente"

Guest House - Bed & Breakfast Rates		Night	Weekend	week	2 weeks	Month
1 Studio Flat "De paprente" 4 person(s) (2 adults - 2 children)		£55*	£105* (Friday)	£273* (Saturday)	-	-
		£55*	£105* (Friday)	£273* (Saturday)	-	-
		£59*	£109* (Friday)	£278* (Saturday)	-	-
	Low season		Mid season		High season	

(Check-in day)

[Book now](#)

Booking conditions

• Reservation

- Payment made upon reservation : 50% of rental sum
- Payment balance : on handing over the keys
- Deposit required : £46*

• rentals

- Day tax included
- Cleaning charge levy on departure : £27*
- Anticipated supplement for : - supplementary bed(s)

[▶ Book now](#)

[▶ Contact the owner](#)

Accepted methods of payment

- Bank transfer (wire) • Cash

Contact directly the property owners

www.ihacom.co.uk

Advert No.
48000

[>> Book now <<](#)

Contact

Spoken languages



* Converted at the rate indicated : €100 = \$110 = £91

Advert No. 48000

www.ihacom.co.uk



[>> HOLIDAY LETTINGS](#)

BOOK DIRECT WITH THE OWNERS