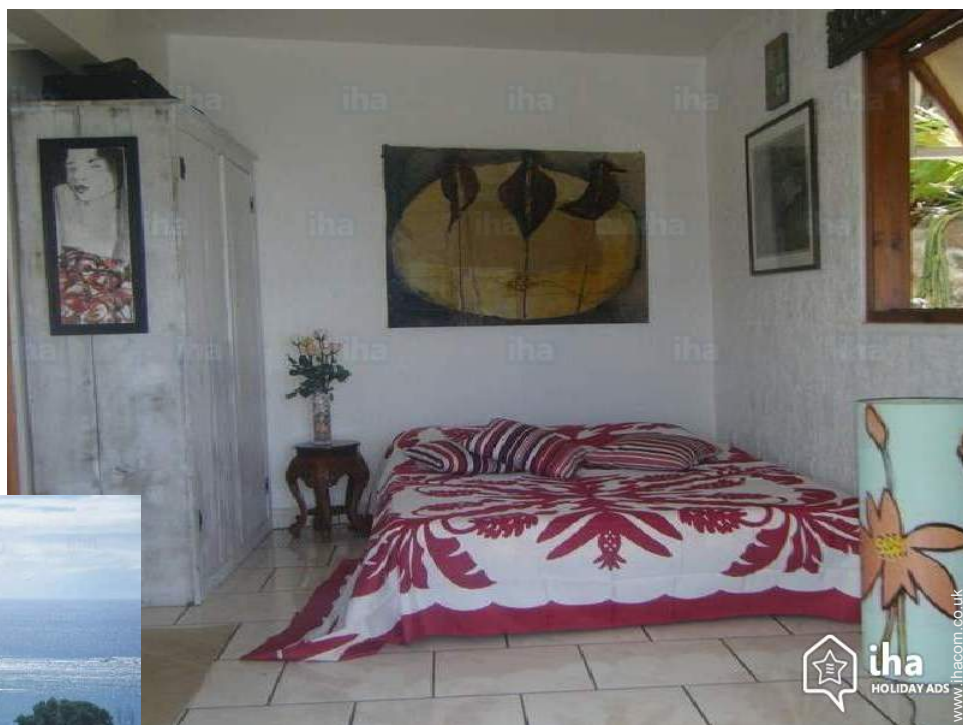


Guest House - Bed & Breakfast Mahina "Fare Iti"

Travel to Tahiti for dance, surf culture or another, Mahina vacation rentals on the East coast of Tahiti, 10 km from Papeete.



Theme breaks
Fairs and traditions



Eco-tourisme ()

Bungalow, detached, 1 floor, separate entrance, in a(an) Traditional accommodation

Setting : tropical, natural

Guest Room(s) : 1

Receive up to : **from 1 to 3 guests**

- Room "Room1"
3 person(s)

Mahina - Tahiti - Windward Islands - Society Islands

French Polynesia

Reservation : +689 (0) 709006 (French Polynesia)

www.ihacom.co.uk



Advert No. 49712



>> HOLIDAY LETTINGS

BOOK DIRECT WITH THE OWNERS

Guest House - Bed & Breakfast



Bungalow, detached, 1 floor, separate entrance, in a(an) Traditional accommodation

- **Ideal for couples, all age groups**
- **View :** panoramic, unobscured, sea/ocean, mountain, fantastic sunset
- **Setting :** tropical, natural

" Small studio for rent, independent of the house, overlooking the ocean. 1 covered deck and 1 open deck. You have 1 big bed, possible to add 1 single bed. 1 fridge, table, chairs, bathroom with solar water heater. Transfer to the city or airport possible. Close to all amenities, bus stop, pharmacy, super market, post office, public beach. Kitchen in common. We will be happy to make you visit Tahiti in its Polynesian simplicity and authenticity. "



Surroundings

Surroundings & location



Seaside



Culture

" Leisure: we are close to several schools of dance, percussion school, a sailing diving school, kite surf spot in less than 5 minutes from the studio. Surfing in Papenoo. Possibility to visit the Papenoo Valley and his Marae refuge to meet the members of the association for the protection of this beautiful valley. Local sail canoe trips are possible. "

Leisure

- **Leisure activities less than 20 km / 12 miles :**

Bathing, snorkelling, scuba diving, surfing, windsurfing, sailing, kite surfing, canoeing, boat trips, safari, angling, spear fishing

- **Supervised :**

Sailing school, dive school

Surroundings

- **Locality :**

Sea/ocean 0.93mi.
Sandy beach 0.62mi.
Shingle beach 1.5mi.
Rocky beach 0.62mi.
Public swimming pool 6mi.
18 hole golf course >31mi.
Windsurfing spots 0.3mi.
Surfing spots 1.25mi.
Watersports centre 1.85mi.
Waterfall 4.5mi.
River 2.5mi.
Mountain range 4.5mi.
Slipway 0.62mi.
Jetski slipway



view from the house



Guest House - Bed & Breakfast
Mahina - French Polynesia
"Fare Iiti"

3

[Book now](#)

Exterior

- Exterior facilities at guests disposal :
Terrace, covered terrace, balcony
- Outside at the guests disposal :
Garden
- Exterior amenities at guests disposal :
Summer kitchen, BBQ, garden table(s),
garden seat(s)

Interior

- Receive up to :
from 1 to 3 guests, 1 Guest Room(s)
- Interior comforts at guests disposal :
Crockery/cutlery, internet access, wifi, hair
dryer, washing machine, clothes dryer, iron

Services

- Restauration :
Breakfast supplement (+£6*), Locally
produced meals supplement
- Washing :
Sheets, Blanket(s), Quilt(s), Pillows
- House :
Cleaning on departure, Caretaker/concierge
supplement (+£4*), Airport transfers supplement
(+£30*)
- Personnel :
Chauffeur supplement, Laundry supplement
(+£4*), Baby sitting supplement, Guide
supplement

For your guidance

- For your guidance
Children welcome
Pets accepted under certain conditions (ask
the owner)
Present on site : pets
Water : hot/cold
Local voltage supply : 220-240V / 50Hz
Electricity supply : mains



Advert No. 49712

www.ihacom.co.uk



[>> HOLIDAY LETTINGS](#)

[BOOK DIRECT WITH THE OWNERS](#)

Room "Room1"



3 person(s) : 3 adults

Ideal for couples

•Interior layout and facilities :

1 bathroom, 1 WC, typical style kitchen, dining area, study

•Sleeps - bed(s) :

1 super king-size bed(s), 1 single bed(s), 1 foldaway bed(s) 1 pers, 1 baby cot(s), 4 possible extra bed(s)

•View :

Panoramic, unobscured, sea/ocean, mountain, fantastic sunset

•Exposure :

North-east

•Facilities exclusive to :

Separate entrance

•Guest facilities and furnishings :

Electric kettle, wifi, oven, wardrobe, Hanging wardrobe, micro-wave oven, radio alarmclock, hair dryer, reffridgerator, mosquito nets, washing machine, clothes dryer, iron, ironing board, Curtains

•baby equipment :

Playpen



The guest room



master bedroom



shared kitchen facilities



view from the balcony



view from the kitchen

Guest House - Bed & Breakfast
Tahiti - Mahina
"Fare Iti"

5

[Book now](#)

Photo album - 1



the flat



Surroundings



view from the house



Advert No. 49712

www.ihacom.co.uk



[>> HOLIDAY LETTINGS](#)

[BOOK DIRECT WITH THE OWNERS](#)

[Theme breaks](#)

Fairs and traditions

[Favourite photo gallery - 1](#)



Apr 2009



Sep 2009



May 2009



Favourite photo gallery - 2



Oct 2010

Oct 2010



Oct 2010

Oct 2010

Oct 2010



Oct 2010

Oct 2010

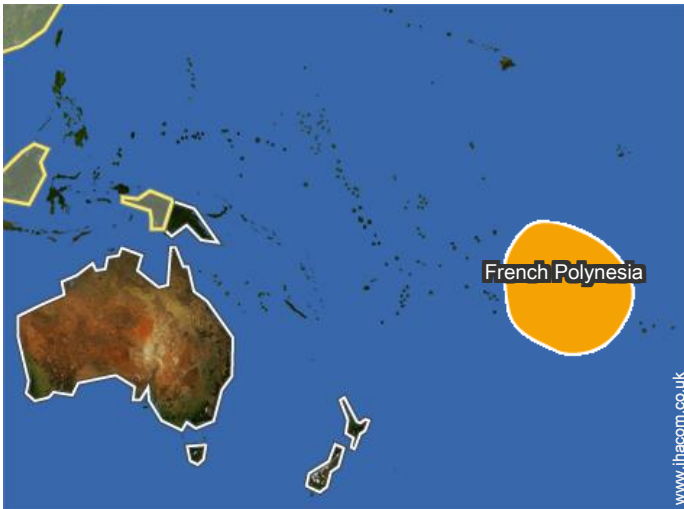
Jan 2011



Aug 2011

Aug 2011

Location



Location & Access

" Location of the studio on Mahina PK. 10,700 mountain side. On the coast East of Tahiti. The road before the sharifs of Mahina. "



GPS coordinates in degrees, minutes, seconds: Latitude 17°30'51"S - Longitude 149°28'59"W (Dwelling)

Address

→ Atima ct montagne pk 10.7
98709 Mahina

• Airport Tahiti Faa'a

→ Papeete, Tahiti, Windward Islands -
Society Islands, French Polynesia
→ Distance : 9mi.
→ Time : 30'

• Sea port Papeete

→ Papeete, Tahiti, Windward Islands -
Society Islands, French Polynesia
→ Distance : 9mi.
→ Time : 30'

• Arue : (15.5mi.)

- Papeete : (6mi.)
- Papeete : (6mi.)

Contact

Spoken languages



Guest House - Bed & Breakfast
 Windward Islands - Society Islands - Mahina
"Fare Iti"

10
[Book now](#)

Availability calendar - from : april 2018

Apr	Su	M	Tu	W	Th	F	Sa	Su	M	Tu	W	Th	F	Sa	Su	M	Tu	W	Th	F	Sa	Su	M							
2018	1	2	3	4	5	6	7	8	9	10	11	12	13	14	15	16	17	18	19	20	21	22	23	24	25	26	27	28	29	30
1																														

May	Tu	W	Th	F	Sa	Su	M	Tu	W	Th	F	Sa	Su	M	Tu	W	Th	F	Sa	Su	M	Tu	W	Th	F	Sa	Su	M	Tu	W	Th
2018	1	2	3	4	5	6	7	8	9	10	11	12	13	14	15	16	17	18	19	20	21	22	23	24	25	26	27	28	29	30	31
1	-	-	-	-	-	-	-	-	-	-	-	-	-	-	-	-	-	-	-	-	-	-	-	-	-	-	-	-	-	-	-

June	F	Sa	Su	M	Tu	W	Th	F	Sa	Su	M	Tu	W	Th	F	Sa	Su	M	Tu	W	Th	F	Sa	Su	M	Tu	W	Th	F	Sa
2018	1	2	3	4	5	6	7	8	9	10	11	12	13	14	15	16	17	18	19	20	21	22	23	24	25	26	27	28	29	30
1	-	-	-	-	-	-	-	-	-	-	-	-	-	-	-	-	-	-	-	-	-	-	-	-	-	-	-	-	-	-

Jul	Su	M	Tu	W	Th	F	Sa	Su	M	Tu	W	Th	F	Sa	Su	M	Tu	W	Th	F	Sa	Su	M	Tu	W	Th	F	Sa	Su	M	Tu
2018	1	2	3	4	5	6	7	8	9	10	11	12	13	14	15	16	17	18	19	20	21	22	23	24	25	26	27	28	29	30	31
1	-	-	-	-	-	-	-	-	-	-	-	-	-	-	-	-	-	-	-	-	-	-	-	-	-	-	-	-	-	-	-

Aug	W	Th	F	Sa	Su	M	Tu	W	Th	F	Sa	Su	M	Tu	W	Th	F	Sa	Su	M	Tu	W	Th	F	Sa	Su	M	Tu	W	Th	F
2018	1	2	3	4	5	6	7	8	9	10	11	12	13	14	15	16	17	18	19	20	21	22	23	24	25	26	27	28	29	30	31
1	-	-	-	-	-	-	-	-	-	-	-	-	-	-	-	-	-	-	-	-	-	-	-	-	-	-	-	-	-	-	-

Sep	Sa	Su	M	Tu	W	Th	F	Sa	Su	M	Tu	W	Th	F	Sa	Su	M	Tu	W	Th	F	Sa	Su	M	Tu	W	Th	F	Sa	Su
2018	1	2	3	4	5	6	7	8	9	10	11	12	13	14	15	16	17	18	19	20	21	22	23	24	25	26	27	28	29	30
1	-	-	-	-	-	-	-	-	-	-	-	-	-	-	-	-	-	-	-	-	-	-	-	-	-	-	-	-	-	-

Oct	M	Tu	W	Th	F	Sa	Su	M	Tu	W	Th	F	Sa	Su	M	Tu	W	Th	F	Sa	Su	M	Tu	W	Th	F	Sa	Su	M	Tu	W
2018	1	2	3	4	5	6	7	8	9	10	11	12	13	14	15	16	17	18	19	20	21	22	23	24	25	26	27	28	29	30	31
1	-	-	-	-	-	-	-	-	-	-	-	-	-	-	-	-	-	-	-	-	-	-	-	-	-	-	-	-	-	-	-

Nov	Th	F	Sa	Su	M	Tu	W	Th	F	Sa	Su	M	Tu	W	Th	F	Sa	Su	M	Tu	W	Th	F	Sa	Su	M	Tu	W	Th	F
2018	1	2	3	4	5	6	7	8	9	10	11	12	13	14	15	16	17	18	19	20	21	22	23	24	25	26	27	28	29	30
1	-	-	-	-	-	-	-	-	-	-	-	-	-	-	-	-	-	-	-	-	-	-	-	-	-	-	-	-	-	-

Dec	Sa	Su	M	Tu	W	Th	F	Sa	Su	M	Tu	W	Th	F	Sa	Su	M	Tu	W	Th	F	Sa	Su	M	Tu	W	Th	F	Sa	Su	M
2018	1	2	3	4	5	6	7	8	9	10	11	12	13	14	15	16	17	18	19	20	21	22	23	24	25	26	27	28	29	30	31
1	-	-	-	-	-	-	-	-	-	-	-	-	-	-	-	-	-	-	-	-	-	-	-	-	-	-	-	-	-	-	-

Jan	Tu	W	Th	F	Sa	Su	M	Tu	W	Th	F	Sa	Su	M	Tu	W	Th	F	Sa	Su	M	Tu	W	Th	F	Sa	Su	M	Tu	W	Th
2019	1	2	3	4	5	6	7	8	9	10	11	12	13	14	15	16	17	18	19	20	21	22	23	24	25	26	27	28	29	30	31
1	-	-	-	-	-	-	-	-	-	-	-	-	-	-	-	-	-	-	-	-	-	-	-	-	-	-	-	-	-	-	-



Guest House - Bed & Breakfast
Tahiti - Mahina
"Fare Iti"

11
[Book now](#)

Availability calendar - from : january 2019

Feb	F	Sa	Su	M	Tu	W	Th	F	Sa	Su	M	Tu	W	Th	F	Sa	Su	M	Tu	W	Th	F	Sa	Su	M	Tu	W	Th
2019	1	2	3	4	5	6	7	8	9	10	11	12	13	14	15	16	17	18	19	20	21	22	23	24	25	26	27	28
1	-	-	-	-	-	-	-	-	-	-	-	-	-	-	-	-	-	-	-	-	-	-	-	-	-	-	-	-

Mar	F	Sa	Su	M	Tu	W	Th	F	Sa	Su	M	Tu	W	Th	F	Sa	Su	M	Tu	W	Th	F	Sa	Su							
2019	1	2	3	4	5	6	7	8	9	10	11	12	13	14	15	16	17	18	19	20	21	22	23	24	25	26	27	28	29	30	31
1	-	-	-	-	-	-	-	-	-	-	-	-	-	-	-	-	-	-	-	-	-	-	-	-	-	-	-	-	-		

[Month : Next >>](#)

Rental rates "Fare Iti"

Guest House - Bed & Breakfast Rates			Night	Weekend	week	2 weeks	Month
1	Room "Room1" 3 person(s) (3 adults)		£45*	-	£318*	-	-
	Low season						

[Book now](#)

Booking conditions

• Reservation

→ Payment made upon reservation :
25% of rental sum
→ Payment balance :
on handing over the keys

• rentals

→ Cleaning charge on departure included
→ Anticipated supplement for :
- supplementary bed(s)

[▶ Book now](#)

[▶ Contact the owner](#)

Accepted methods of payment

• International Money Order • Bank
transfer (wire) • Cash

Contact directly the property owners

www.ihacom.co.uk

Advert No.

49712

[>> Book now <<](#)

Contact

Spoken
languages



* Converted at the rate indicated : €100 = \$123.46 = £88.94

Advert No. 49712

www.ihacom.co.uk

