

Guest House - Bed & Breakfast Hardelot-Plage "VILLA LAPACY"



Theme breaks
Valentine's Day

Charming Villa, detached, 2 floors, separate entrance, in a(an) Private property

Setting : natural, suitable for a relaxing break

Guest Room(s) : 4

Receive up to : **from 6 to 8 guests**



Clé vacances (3 keys)

- Studio Flat "Golf I"
2 person(s)
- Studio Flat "Beau rivage II"
2 person(s)
- Studio Flat "Beau rivage I"
2 person(s)
- Studio Flat "Golf II"
2 person(s)

Hardelot-Plage - Pas-de-Calais (62) - Nord-Pas de Calais
France

Reservation : +33 (0) 321913768 (France)

Advert No. 34224

www.ihacom.co.uk



Guest House - Bed & Breakfast



Charming Villa, detached, 2 floors, separate entrance, in a(an) Private property

- **Ideal for all age groups**
- **View :** unobscured, garden/park, forest, village
- **Setting :** natural, suitable for a relaxing break
- **Exposure :** South

Assets

- **Parking :**
Parking uncovered : 4 reserved bay.
- **Advantages :**
Ping-pong table, 8 ping-pong bats, pétanque pitch, 3 pétanque set(s), 8 bike(s)
- **baby equipment :**
Baby chair, baby changer, baby bath, baby potty, playpen, pushchair



View from the property

Surroundings & location



Leisure

- **Leisure activities less than 20 km / 12 miles :**

Bathing, surfing, windsurfing, sailing, kite surfing, canoeing, golf, tennis, riding school, pony club, pathway, coastal/forest paths, mountain bike (path), sand yachting, boat trips, horse trekking, donkey rides, mini-golf, rollerblade/rollerskate (circuit), skate board (ramps), go-karting, basketball, volleyball, paintball, clay pigeon shooting, hunting, acrobatics, fishing, deep-sea angling, angling

- **Supervised :**

Sailing school, tennis school, riding school

- **Attractions and relaxation :**

Bar/pub, discotheque, restaurant, cinema, park and garden, sea world, nature reserve, exhibition centre, art gallery, historical site, museum, theatre, festivals, antiques & bric-a-brac, local craftshop, cellar and wine tasting, casino, racecourse, natural spring baths, thalassotherapy centre, sauna, steam baths, beauticians, fitness centre, Bio farm

Surroundings

- **Locality :**

Ice skating rink 9mi.
Sea/ocean 0.62mi.
Sandy beach 0.62mi.
Public swimming pool 9mi.
9 hole golf course 0.3mi.
18 hole golf course 0.3mi.
Flying clubs 9mi.
Watersports centre 0.62mi.
Lake 0.3mi.
Forest 0.62mi.
Marina 9mi.

- **Amenities :**

Nursery 0.62mi.
Village centre 0.62mi.
Town centre 6mi.
Bus stop / bus station 0.3mi.
Bike/mountain bike hire 0.62mi.
Car rental 9mi.
Breadshop 0.62mi.
Caterer 0.62mi.
Local shops 0.62mi.
Supermarket 2.5mi.
High class retailers 9mi.
Hairdressing salon 0.62mi.
Internet cafe 2.5mi.
Post office 0.93mi.
Bank 2.5mi.

Cash point 0.62mi.
Chemist 0.62mi.
Doctor 0.62mi.
Nurse 0.62mi.
Hospital 9mi.



Guest House - Bed & Breakfast
Hardelot-Plage - France
"VILLA LAPACY"

3

[Book now](#)

Exterior

- **Ground surface :**
0.75 acre
- **Exterior facilities at guests disposal :**
Terrace 110 Sq.ft., garden shed
- **Outside at the guests disposal :**
Private courtyard 323 Sq.ft., enclosed grounds 0.75 acre, lawn 530 Sq.ft., pinewood 0.75 acre
- **Exterior amenities at guests disposal :**
BBQ, gas BBQ, garden table(s), garden seat (s), trolley on wheels, parasol, garden seated area, 6 chaise(s) longue(s), 4 sun recliner(s), child's swing, climbing frame, sand pit

Interior

- **Receive up to :**
from 6 to 8 guests, 4 Guest Room(s)
- **Liveable floor area :**
4,300 Sq.ft.
- **Interior comforts at guests disposal :**
T.V., crockery/cutlery, board games, book collection, internet access, wifi, hair dryer, electric heating

Services

- **Restauration :**
Breakfast supplement (+£4*)
- **Washing :**
Sheets, Towels, Blanket(s), Pillows
- **House :**
Cleaning
- **Personnel :**
Baby sitting supplement

For your guidance

- **For your guidance**
Children welcome
Pets accepted under certain conditions (ask the owner)
Mobile telephone network coverage
Water : hot/cold
Local voltage supply : 110-120V / 60Hz
Electricity supply : mains
- **Handicapped people welcome**
Wheelchair access

Advert No. 34224

www.ihacom.co.uk



>> HOLIDAY LETTINGS

BOOK DIRECT WITH THE OWNERS

Studio Flat "Golf I"



2 person(s)

•Interior layout and facilities :

1 bathroom, 1 WC, kitchenette, dining area

•Sleeps - bed(s) :

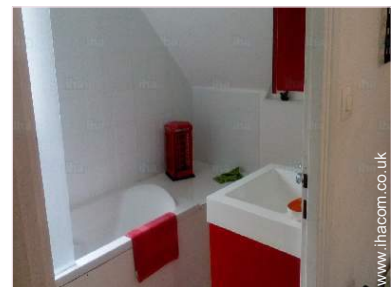
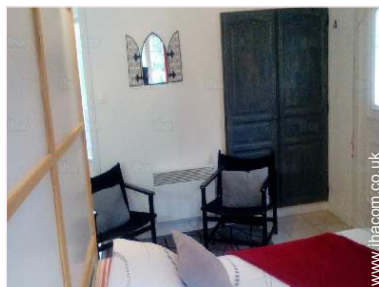
2 double bed(s)

•View :

Not overlooked, garden/park, forest

•Guest facilities and furnishings :

T.V., electric coffee maker, electric kettle, electric hobs, wifi, cupboard, micro-wave oven, hair dryer, reffridgerator, electric heating, Curtains



Studio Flat "Beau rivage II"



2 person(s) : 2 adults

•Interior layout and facilities :

1 bathroom, 1 WC, kitchenette, dining area

•Sleeps - bed(s) :

1 double bed(s)

•View :

Not overlooked, garden/park, forest

•Guest facilities and furnishings :

T.V., electric coffee maker, electric kettle, internet access, electric hobs, wardrobe, micro-wave oven, hair dryer, refridgerator, central heating, Glazed in area, Curtains

•Exterior private facilities :

Garden table(s)



Studio Flat "Beau rivage I"

2 person(s) : 2 adults

Studio Flat "Golf II"

2 person(s)

Photo album - 1



the house



View from the property



[Theme breaks](#)

Valentine's Day

Location



Location & Access



GPS coordinates in degrees, minutes, seconds: Latitude 50°37'49"N - Longitude 1°36'36"E ([Dwelling](#))

Address

→ 50 allée des pinsons
Villa LAPACY
62152 Hardelot-Plage

● Motorway (junction) 27

→ Boulogne-sur-Mer, Pas-de-Calais, Nord-Pas de Calais, France
→ Distance : 9mi.
→ Time : 10'

● Motorway (junction) 27

→ Étaples, Pas-de-Calais, Nord-Pas de Calais, France
→ Distance : 6mi.
→ Time : 5'

- Le Touquet-Paris-Plage : (10,5mi.)
- Boulogne-sur-Mer : (9mi.)

- Étaples : (6mi.)

Contact

Spoken languages



Guest House - Bed & Breakfast
 Nord-Pas de Calais - Hardelot-Plage
"VILLA LAPACY"

10
[Book now](#)

Availability calendar - from : january 2019

Jan	Tu	W	Th	F	Sa	Su	M	Tu	W	Th	F	Sa	Su	M	Tu	W	Th	F	Sa	Su	M	Tu	W	Th	F	Sa	Su	M	Tu	W	Th	
2019	1	2	3	4	5	6	7	8	9	10	11	12	13	14	15	16	17	18	19	20	21	22	23	24	25	26	27	28	29	30	31	
1																																
2																																
3																																
4																																

Feb	F	Sa	Su	M	Tu	W	Th	F	Sa	Su	M	Tu	W	Th	F	Sa	Su	M	Tu	W	Th	F	Sa	Su	M	Tu	W	Th			
2019	1	2	3	4	5	6	7	8	9	10	11	12	13	14	15	16	17	18	19	20	21	22	23	24	25	26	27	28			
1																															
2																															
3																															
4																															

Mar	F	Sa	Su	M	Tu	W	Th	F	Sa	Su	M	Tu	W	Th	F	Sa	Su	M	Tu	W	Th	F	Sa	Su	M	Tu	W	Th	F	Sa	Su	
2019	1	2	3	4	5	6	7	8	9	10	11	12	13	14	15	16	17	18	19	20	21	22	23	24	25	26	27	28	29	30	31	
1																																
2																																
3																																
4																																

Apr	M	Tu	W	Th	F	Sa	Su	M	Tu	W	Th	F	Sa	Su	M	Tu	W	Th	F	Sa	Su	M	Tu	W	Th	F	Sa	Su	M	Tu	
2019	1	2	3	4	5	6	7	8	9	10	11	12	13	14	15	16	17	18	19	20	21	22	23	24	25	26	27	28	29	30	
1																															
2																															
3																															
4																															

May	W	Th	F	Sa	Su	M	Tu	W	Th	F	Sa	Su	M	Tu	W	Th	F	Sa	Su	M	Tu	W	Th	F	Sa	Su	M	Tu	W	Th	F
2019	1	2	3	4	5	6	7	8	9	10	11	12	13	14	15	16	17	18	19	20	21	22	23	24	25	26	27	28	29	30	31
1																															
2																															
3																															
4																															

- Studio Flat "Golf I" - 2 person(s)
- Studio Flat "Beau rivage I" - 2 person(s)
- Studio Flat "Golf II" - 2 person(s)
- Studio Flat "Beau rivage II" - 2 person(s)

Low season



Guest House - Bed & Breakfast
Pas-de-Calais - Hardelot-Plage
"VILLA LAPACY"

Availability calendar - from : may 2019

June	Sa	Su	M	Tu	W	Th	F	Sa	Su	M	Tu	W	Th	F	Sa	Su	M	Tu	W	Th	F	Sa	Su	M	Tu	W	Th	F	Sa	Su
2019	1	2	3	4	5	6	7	8	9	10	11	12	13	14	15	16	17	18	19	20	21	22	23	24	25	26	27	28	29	30
1	-	-	-	-	-	-	-	-	-	-	-	-	-	-	-	-	-	-	-	-	-	-	-	-	-	-	-	-	-	-
2	-	-	-	-	-	-	-	-	-	-	-	-	-	-	-	-	-	-	-	-	-	-	-	-	-	-	-	-	-	-
3	-	-	-	-	-	-	-	-	-	-	-	-	-	-	-	-	-	-	-	-	-	-	-	-	-	-	-	-	-	-
4	-	-	-	-	-	-	-	-	-	-	-	-	-	-	-	-	-	-	-	-	-	-	-	-	-	-	-	-	-	-

Jul	M	Tu	W	Th	F	Sa	Su	M	Tu	W	Th	F	Sa	Su	M	Tu	W	Th	F	Sa	Su	M	Tu	W	Th	F	Sa	Su	M	Tu	W
2019	1	2	3	4	5	6	7	8	9	10	11	12	13	14	15	16	17	18	19	20	21	22	23	24	25	26	27	28	29	30	31
1	-	-	-	-	-	-	-	-	-	-	-	-	-	-	-	-	-	-	-	-	-	-	-	-	-	-	-	-	-	-	-
2	-	-	-	-	-	-	-	-	-	-	-	-	-	-	-	-	-	-	-	-	-	-	-	-	-	-	-	-	-	-	-
3	-	-	-	-	-	-	-	-	-	-	-	-	-	-	-	-	-	-	-	-	-	-	-	-	-	-	-	-	-	-	-
4	-	-	-	-	-	-	-	-	-	-	-	-	-	-	-	-	-	-	-	-	-	-	-	-	-	-	-	-	-	-	-

Aug	Th	F	Sa	Su	M	Tu	W	Th	F	Sa	Su	M	Tu	W	Th	F	Sa	Su	M	Tu	W	Th	F	Sa	Su	M	Tu	W	Th	F	Sa
2019	1	2	3	4	5	6	7	8	9	10	11	12	13	14	15	16	17	18	19	20	21	22	23	24	25	26	27	28	29	30	31
1	-	-	-	-	-	-	-	-	-	-	-	-	-	-	-	-	-	-	-	-	-	-	-	-	-	-	-	-	-	-	-
2	-	-	-	-	-	-	-	-	-	-	-	-	-	-	-	-	-	-	-	-	-	-	-	-	-	-	-	-	-	-	-
3	-	-	-	-	-	-	-	-	-	-	-	-	-	-	-	-	-	-	-	-	-	-	-	-	-	-	-	-	-	-	-
4	-	-	-	-	-	-	-	-	-	-	-	-	-	-	-	-	-	-	-	-	-	-	-	-	-	-	-	-	-	-	-

Sep	Su	M	Tu	W	Th	F	Sa	Su	M	Tu	W	Th	F	Sa	Su	M	Tu	W	Th	F	Sa	Su	M	Tu	W	Th	F	Sa	Su	M
2019	1	2	3	4	5	6	7	8	9	10	11	12	13	14	15	16	17	18	19	20	21	22	23	24	25	26	27	28	29	30
1	-	-	-	-	-	-	-	-	-	-	-	-	-	-	-	-	-	-	-	-	-	-	-	-	-	-	-	-	-	-
2	-	-	-	-	-	-	-	-	-	-	-	-	-	-	-	-	-	-	-	-	-	-	-	-	-	-	-	-	-	-
3	-	-	-	-	-	-	-	-	-	-	-	-	-	-	-	-	-	-	-	-	-	-	-	-	-	-	-	-	-	-
4	-	-	-	-	-	-	-	-	-	-	-	-	-	-	-	-	-	-	-	-	-	-	-	-	-	-	-	-	-	-

Oct	Tu	W	Th	F	Sa	Su	M	Tu	W	Th	F	Sa	Su	M	Tu	W	Th	F	Sa	Su	M	Tu	W	Th	F	Sa	Su	M	Tu	W	Th
2019	1	2	3	4	5	6	7	8	9	10	11	12	13	14	15	16	17	18	19	20	21	22	23	24	25	26	27	28	29	30	31
1	-	-	-	-	-	-	-	-	-	-	-	-	-	-	-	-	-	-	-	-	-	-	-	-	-	-	-	-	-	-	-
2	-	-	-	-	-	-	-	-	-	-	-	-	-	-	-	-	-	-	-	-	-	-	-	-	-	-	-	-	-	-	-
3	-	-	-	-	-	-	-	-	-	-	-	-	-	-	-	-	-	-	-	-	-	-	-	-	-	-	-	-	-	-	-
4	-	-	-	-	-	-	-	-	-	-	-	-	-	-	-	-	-	-	-	-	-	-	-	-	-	-	-	-	-	-	-

- 1 Studio Flat "Golf I" - 2 person(s)
- 2 Studio Flat "Beau rivage I" - 2 person(s)
- 3 Studio Flat "Golf II" - 2 person(s)
- 4 Studio Flat "Beau rivage II" - 2 person(s)

Low season

Guest House - Bed & Breakfast
 Nord-Pas de Calais - France
"VILLA LAPACY"

12
[Book now](#)

Availability calendar - from : october 2019

Nov	F	Sa	Su	M	Tu	W	Th	F	Sa	Su	M	Tu	W	Th	F	Sa	Su	M	Tu	W	Th	F	Sa	Su	M	Tu	W	Th	F	Sa
2019	1	2	3	4	5	6	7	8	9	10	11	12	13	14	15	16	17	18	19	20	21	22	23	24	25	26	27	28	29	30
1	-	-	-	-	-	-	-	-	-	-	-	-	-	-	-	-	-	-	-	-	-	-	-	-	-	-	-	-	-	-
2	-	-	-	-	-	-	-	-	-	-	-	-	-	-	-	-	-	-	-	-	-	-	-	-	-	-	-	-	-	-
3	-	-	-	-	-	-	-	-	-	-	-	-	-	-	-	-	-	-	-	-	-	-	-	-	-	-	-	-	-	-
4	-	-	-	-	-	-	-	-	-	-	-	-	-	-	-	-	-	-	-	-	-	-	-	-	-	-	-	-	-	-

Dec	Su	M	Tu	W	Th	F	Sa	Su	M	Tu	W	Th	F	Sa	Su	M	Tu	W	Th	F	Sa	Su	M	Tu	W	Th	F	Sa	Su	M	Tu
2019	1	2	3	4	5	6	7	8	9	10	11	12	13	14	15	16	17	18	19	20	21	22	23	24	25	26	27	28	29	30	31
1	-	-	-	-	-	-	-	-	-	-	-	-	-	-	-	-	-	-	-	-	-	-	-	-	-	-	-	-	-	-	-
2	-	-	-	-	-	-	-	-	-	-	-	-	-	-	-	-	-	-	-	-	-	-	-	-	-	-	-	-	-	-	-
3	-	-	-	-	-	-	-	-	-	-	-	-	-	-	-	-	-	-	-	-	-	-	-	-	-	-	-	-	-	-	-
4	-	-	-	-	-	-	-	-	-	-	-	-	-	-	-	-	-	-	-	-	-	-	-	-	-	-	-	-	-	-	-

- 1 Studio Flat "Golf I" - 2 person(s)
- 3 Studio Flat "Golf II" - 2 person(s)

- 2 Studio Flat "Beau rivage I" - 2 person(s)
- 4 Studio Flat "Beau rivage II" - 2 person(s)

 Low season

[Month : Next >>](#)





Rental rates "VILLA LAPACY"



Guest House - Bed & Breakfast Rates		Night	Weekend	week	2 weeks	Month
1 Studio Flat "Golf I" 2 person(s)	 	£36*	-	-	-	-
	 	£40*	-	-	-	-
	 	£45*	-	-	-	-
2 Studio Flat "Beau rivage I" 2 person(s) (2 adults)	 	-	-	-	-	-
	 	-	-	-	-	-
	 	-	-	-	-	-
3 Studio Flat "Golf II" 2 person(s)	 	-	-	-	-	-
	 	-	-	-	-	-
	 	-	-	-	-	-

Guest House - Bed & Breakfast
 Hardelot-Plage - France
"VILLA LAPACY"

13
[Book now](#)

Rental rates "VILLA LAPACY"

Guest House - Bed & Breakfast Rates		Night	Weekend	week	2 weeks	Month
4 Studio Flat "Beau rivage II" 2 person(s) (2 adults) 		£36*	-	-	-	-
		£40*	-	-	-	-
		£45*	-	-	-	-

 Low season
  Mid season
  High season

[Book now](#)



the house



View from the property



Booking conditions

- **Reservation**
 → Payment made upon reservation : 15% of rental sum
 → Payment balance : on handing over the keys
- **rentals**
 → Service charges included
 → Day tax included
 → Cleaning charge on departure included
 → Anticipated supplement for :
 - animals
 - supplementary bed(s)

Accepted methods of payment

- International Money Order • Cheque • Bankers draft • PayPal • Cash • Holiday voucher

[▶ Book now](#)

[▶ Contact the owner](#)

Contact directly the property owners


www.ihacom.co.uk

Advert No.

34224

>> [Book now](#) <<

Contact

Spoken languages 

* Converted at the rate indicated : €100 = \$116.85 = £89

Advert No. 34224

www.ihacom.co.uk

