

Luxury holiday letting Sol Tróia "Tróia Resort - Villas do Mar 46"



Luxury Villa, detached, 2 floors,
separate entrance, in a(an) Golf/Resort

Setting : heavenly, seaside

Capacity : from 2 to 10 person(s)

Bedroom(s) : 5

Sol Tróia - Discript of Setúbal - Lisbon and Tagus Valley
Portugal

Advert No. 76531

www.ihacom.co.uk



>> HOLIDAY LETTINGS

BOOK DIRECT WITH THE OWNERS

Luxury holiday letting



Luxury Villa, detached, 2 floors, separate entrance, in a(an) Golf/Resort

- **Ideal for family, family groups**
- **View :** panoramic, unobscured, sea/ ocean, mountain, fantastic sunset, nightlights
- **Setting :** heavenly, seaside
- **Exposure :** South

Assets

- **Swimming pool :**
Private swimming-pool, rectangular, steps in (open from '01 january' till '01 january')
- **Parking :**
Covered parking
Parking uncovered : 2 internal.
- **Advantages :**
Billiard table

Benefits :
 Direct access to the beach



façade

Surroundings & location



Seaside Golf Horse riding Fishing



Thalasso

Leisure

- **Leisure activities less than 20 km / 12 miles :**

Bathing, pedalo, snorkelling, scuba diving, banana boat, water skiing, jet ski, windsurfing, sailing, kite surfing, golf, tennis, riding school, pathway, mountain bike (path), horse trekking, rollerblade/rollerskate (circuit), fishing, deep-sea angling, angling, spear fishing

- **Supervised :**

Sailing school, dive school, tennis school, riding school

- **Attractions and relaxation :**

Bar/pub, discotheque, restaurant, park and garden, leisure park, nature reserve, exhibition centre, theatre, casino, natural spring baths, sauna, steam baths, health farm

Surroundings

- **Locality :**

Sea/ocean 990'
 Sandy beach 990'
 18 hole golf course 0.62mi.
 Lake 330'
 Marina 0.62mi.

- **Amenities :**

Nursery 0.62mi.
 Bike/mountain bike hire 0.62mi.
 Boat rental 0.62mi.
 Scuba diving material hire 0.62mi.
 Breadshop 0.5mi.
 Caterer 0.5mi.
 Supermarket 0.5mi.
 High class retailers 0.5mi.
 Hairdressing salon 0.3mi.
 Post office 0.5mi.
 Bank 0.5mi.
 Cash point 0.5mi.
 Chemist 12.5mi.
 Doctor 0.5mi.
 Nurse 12.5mi.
 Hospital 31mi.
 Dispensing clinic 3mi.



the property



garden



enclosed grounds

Exterior

- **Ground surface :**
6,500 Sq.ft.
- **Outside accommodation :**
Terrace 110 Sq.ft., covered terrace 130 Sq.ft.
- **Outside setting :**
Enclosed grounds 6,500 Sq.ft., landscaped garden 4,300 Sq.ft., lawn 4,300 Sq.ft.
- **Outside amenities :**
BBQ, garden table(s), garden seat(s), parasol, sun recliner(s)



dining room

Interior

- **Receive up to :**
from 2 to 10 person(s) (10 adults)
- **Liveable floor area :**
3,300 Sq.ft.
- **Interior layout :**
5 bedroom(s), 5 bathroom, living room 530 Sq.ft., separate kitchen, dining room, cosy nook, veranda, loggia
- **Sleeps - bed(s) :**
3 double bed(s), 4 single bed(s)
- **Guest facilities :**
Fireplace, T.V., DVD player, book collection, film collection, cable/satelite, wifi, wardrobe, Hanging wardrobe, hair dryer, heated towel rail, fully air conditioned, Curtains, Double glazed, remote controlled gates
- **Appliances :**
Crockery/cutlery, kitchen utensils, electric espresso coffee maker, toaster, juicer, meat grill, gas cooker, electric cooker, oven, microwave oven, extractor hood, refrigerator, freezer, ice maker, dish washer, washing machine, vacuum cleaner, iron, ironing board

Services

- **Washing :**
Sheets (1 X / per week), Towels (1 X / per week), Linen (1 X / per week), Quilt(s) (1 X / per week), Pillows (1 X / per week)
- **House :**
Cleaning (1 X / per week), Garden/swimming pool maintenance (1 X / per week)

For your guidance

- **For your guidance**
Children welcome
No pet allowed
Mobile telephone network coverage, personal transport advisable
Water : hot/cold
Local voltage supply : 220-240V / 50Hz



living room

Photo album - 1



façade



garden



the property



enclosed grounds



living room

Photo album - 2



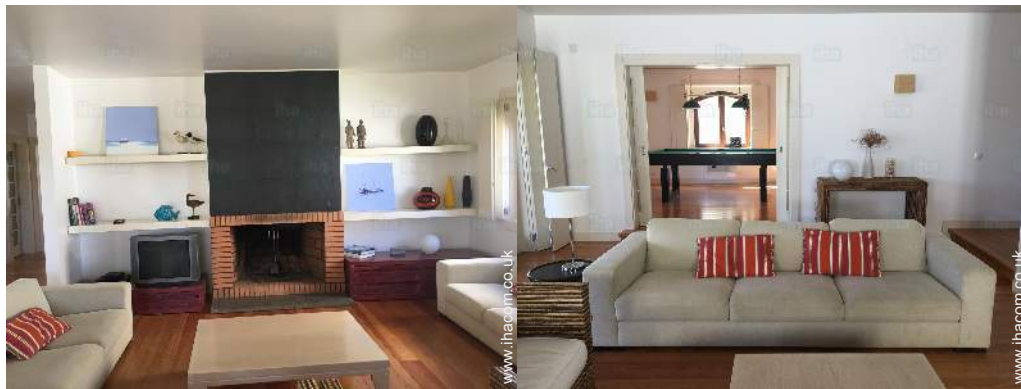
dining room

Guest facilities



kitchen

cosy nook



cosy nook

living room



Interior facilities

Guest facilities

Photo album - 3



large bedroom



covered terrace



guest bedroom



dining room



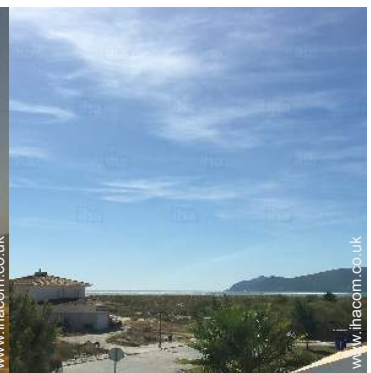
Outside setting



view from the house

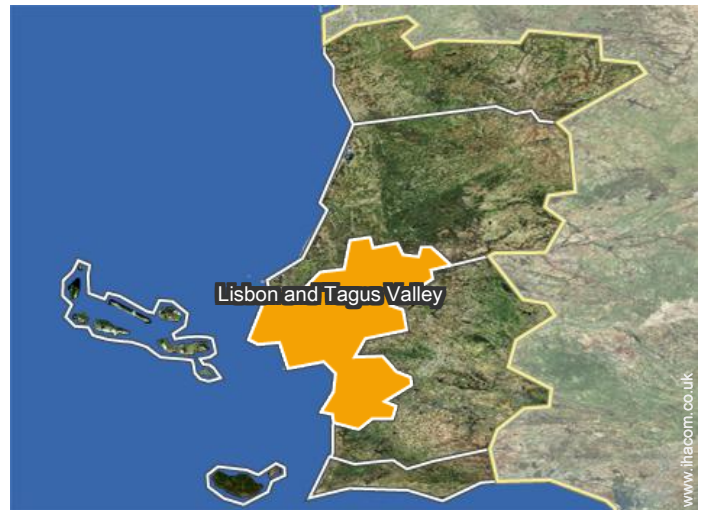
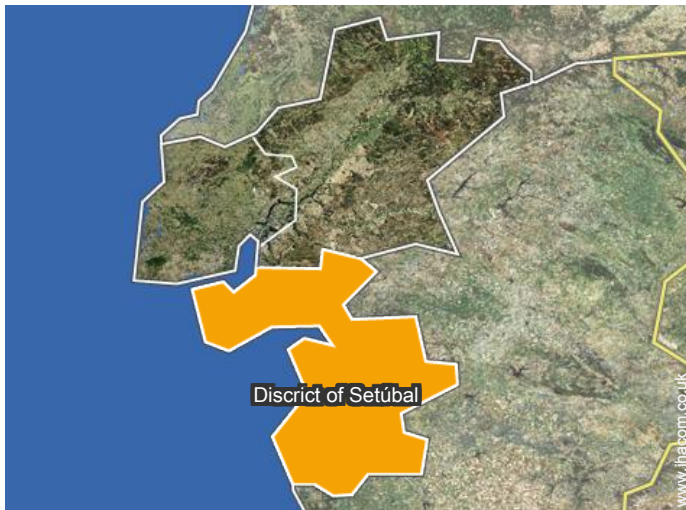


southerly view



south-westerly view

Location



Location & Access



GPS coordinates in degrees, minutes, seconds: Latitude 38°29'6"N - Longitude 8°53'58"W ([Dwelling](#))

Address

→ Vilas do Mar Lote 46
7570 Sol Tróia

• Motorway (junction) A2

→ Grândola, District of Setúbal, Lisbon and Tagus Valley, Portugal
→ Distance : 25mi.
→ Time : 30'

- Setúbal : (56mi.)
- Comporta : (9mi.)

Contact

Spoken languages



Luxury holiday letting
 Discript of Setúbal - Lisbon and Tagus Valley
"Tróia Resort - Villas do Mar 46"

[Book now](#)

Availability calendar - from : september 2018

Sep	Sa	Su	M	Tu	W	Th	F	Sa	Su	M	Tu	W	Th	F	Sa	Su	M	Tu	W	Th	F	Sa	Su							
2018	1	2	3	4	5	6	7	8	9	10	11	12	13	14	15	16	17	18	19	20	21	22	23	24	25	26	27	28	29	30

Oct	M	Tu	W	Th	F	Sa	Su	M	Tu	W	Th	F	Sa	Su	M	Tu	W	Th	F	Sa	Su	M	Tu	W							
2018	1	2	3	4	5	6	7	8	9	10	11	12	13	14	15	16	17	18	19	20	21	22	23	24	25	26	27	28	29	30	31

Nov	Th	F	Sa	Su	M	Tu	W	Th	F	Sa	Su	M	Tu	W	Th	F	Sa	Su	M	Tu	W	Th	F							
2018	1	2	3	4	5	6	7	8	9	10	11	12	13	14	15	16	17	18	19	20	21	22	23	24	25	26	27	28	29	30

Dec	Sa	Su	M	Tu	W	Th	F	Sa	Su	M	Tu	W	Th	F	Sa	Su	M	Tu	W	Th	F	Sa	Su	M							
2018	1	2	3	4	5	6	7	8	9	10	11	12	13	14	15	16	17	18	19	20	21	22	23	24	25	26	27	28	29	30	31

Jan	Tu	W	Th	F	Sa	Su	M	Tu	W	Th	F	Sa	Su	M	Tu	W	Th	F	Sa	Su	M	Tu	W	Th							
2019	1	2	3	4	5	6	7	8	9	10	11	12	13	14	15	16	17	18	19	20	21	22	23	24	25	26	27	28	29	30	31

Feb	F	Sa	Su	M	Tu	W	Th	F	Sa	Su	M	Tu	W	Th	F	Sa	Su	M	Tu	W	Th							
2019	1	2	3	4	5	6	7	8	9	10	11	12	13	14	15	16	17	18	19	20	21	22	23	24	25	26	27	28

Mar	F	Sa	Su	M	Tu	W	Th	F	Sa	Su	M	Tu	W	Th	F	Sa	Su	M	Tu	W	Th	F	Sa	Su							
2019	1	2	3	4	5	6	7	8	9	10	11	12	13	14	15	16	17	18	19	20	21	22	23	24	25	26	27	28	29	30	31

Apr	M	Tu	W	Th	F	Sa	Su	M	Tu	W	Th	F	Sa	Su	M	Tu	W	Th	F	Sa	Su	M	Tu							
2019	1	2	3	4	5	6	7	8	9	10	11	12	13	14	15	16	17	18	19	20	21	22	23	24	25	26	27	28	29	30

May	W	Th	F	Sa	Su	M	Tu	W	Th	F	Sa	Su	M	Tu	W	Th	F	Sa	Su	M	Tu	W	Th	F							
2019	1	2	3	4	5	6	7	8	9	10	11	12	13	14	15	16	17	18	19	20	21	22	23	24	25	26	27	28	29	30	31

June	Sa	Su	M	Tu	W	Th	F	Sa	Su	M	Tu	W	Th	F	Sa	Su	M	Tu	W	Th	F	Sa	Su							
2019	1	2	3	4	5	6	7	8	9	10	11	12	13	14	15	16	17	18	19	20	21	22	23	24	25	26	27	28	29	30

Mid season Low season



Luxury holiday letting
Sol Tróia - Portugal
"Tróia Resort - Villas do Mar 46"

9

[Book now](#)

Availability calendar - from : june 2019

Jul	M	Tu	W	Th	F	Sa	Su	M	Tu	W	Th	F	Sa	Su	M	Tu	W	Th	F	Sa	Su	M	Tu	W							
2019	1	2	3	4	5	6	7	8	9	10	11	12	13	14	15	16	17	18	19	20	21	22	23	24	25	26	27	28	29	30	31

Aug	Th	F	Sa	Su	M	Tu	W	Th	F	Sa	Su	M	Tu	W	Th	F	Sa	Su	M	Tu	W	Th	F	Sa							
2019	1	2	3	4	5	6	7	8	9	10	11	12	13	14	15	16	17	18	19	20	21	22	23	24	25	26	27	28	29	30	31



Mid season



Low season

[Month : Next >>](#)

Rental rates - Luxury Villa - from 2 to 10 Person(s)

Rates	Night	Weekend	week	2 weeks	Month
Low season	£178* > 4	-	£1113*	£2003*	-
Mid season	£312* > 4	-	£2136*	£3560*	£5340*
High season	£401* > 3	-	£2848* (Saturday)	£5340* (Saturday)	-
Festive specials	£534* > 2	-	-	-	-

(Check-in day) > Minimum Night

[Book now](#)

Booking conditions

• Reservation

→ Payment made upon reservation :
50% of rental sum
→ Payment balance :
1 week before the stay

• rentals

→ Service charges included
→ Day tax included
→ Cleaning charge on departure included

[▶ Book now](#)

[▶ Contact the owner](#)

Accepted methods of payment

• Bank transfer (wire) • Cash

Contact directly the property owners

www.ihacom.co.uk

Advert No.

76531

[>> Book now <<](#)

Contact

Spoken languages



* Converted at the rate indicated : €100 = \$116.85 = £89

Advert No. 76531

www.ihacom.co.uk



[>> HOLIDAY LETTINGS](#)

BOOK DIRECT WITH THE OWNERS