

Luxury holiday letting Sainte-Anne Luxury Villa



Luxury Villa, detached, single storey, separate entrance, in a(an) Housing estate

Setting : waterfront, sanctuary

Capacity : from 4 to 6 person(s)

Bedroom(s) : 3

Room(s) : 6



Gîtes de France (3 ears)

Sainte-Anne - Grande-Terre

Guadeloupe

Reservation : +590 (0) 590 908113 (Guadeloupe)

Advert No. 37634

www.ihacom.co.uk



>> HOLIDAY LETTINGS

BOOK DIRECT WITH THE OWNERS

Luxury holiday letting



Luxury Villa, detached, single storey, separate entrance, in a(an) Housing estate

- **Ideal for family, all age groups**
- **View :** panoramic, not overlooked, sea/ocean, country side, swimming pool, garden/park
- **Setting :** waterfront, sanctuary
- **Exposure :** South

Assets

- **Swimming pool :**
Private swimming-pool, oval (length 26', width 11.5'), illuminated, step ladder, child secure, outside shower, pool house
- **Parking :**
Parking uncovered : 2 off road.
- **Advantages :**
Pétanque set(s), 1 snorkelling equipment

Benefits :
Direct access to the beach



View from the property

Surroundings & location



Seaside



Golf



Horse riding

Leisure

- **Leisure activities less than 20 km / 12 miles :**

Bathing, snorkelling, scuba diving, water skiing, jet ski, surfing, windsurfing, sailing, kite surfing, canoeing, canyoning, golf, tennis, squash, riding school, pathway, coastal/forest paths, hiking, parachuting, hang-gliding, Microlights, flying (club), boat trips, horse trekking, ATV/Quad Bike, fishing, deep-sea angling, angling, spear fishing, pétanque pitch

- **Supervised :**

Sailing school, dive school, tennis school

- **Attractions and relaxation :**

Bar/pub, discotheque, restaurant, open air summer cinema, art gallery, historical site, museum, local craftshop, casino, thalassotherapy centre, health farm, beauticians, fitness centre

Surroundings

- **Locality :**

Sea/ocean 165'
Sandy beach 165'
Public tennis court 6mi.
9 hole golf course 6mi.
Flying clubs 6mi.
Windsurfing spots 4.5mi.
Surfing spots 330'
Watersports centre 4.5mi.
Forest 660'
Marina 6mi.

- **Amenities :**

Nursery 3mi.
Village centre 4.5mi.
Bus stop / bus station 0.62mi.
Bike/mountain bike hire 6mi.
Scooter/motorbike hire 4.5mi.
Car rental 4.5mi.
Boat rental 4.5mi.
Scuba diving material hire 6mi.
Breadshop 2.5mi.
Caterer 2.5mi.
Local shops 2.5mi.
Supermarket 2.5mi.
Hairdressing salon 4.5mi.
Internet cafe 4.5mi.
Post office 4.5mi.
Bank 4.5mi.
Cash point 4.5mi.
Chemist 1.25mi.
Doctor 4.5mi.
Nurse 3mi.
Hospital 15.5mi.



view from the kitchen



view from the garden/park

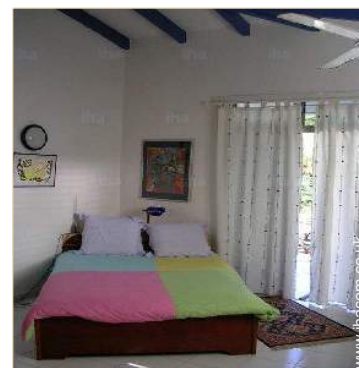


Interior

- **Receive up to :**
from 4 to 6 person(s) (4 adults, 2 children)
- **Liveable floor area :**
1,600 Sq.ft.
- **Interior layout :**
6 Room(s), 3 bedroom(s), 3 shower room, 3 WC, sitting room 345 Sq.ft., american style kitchen, dining area, mezzanine, tv room, bar area, reading room, dressing room, reception hall, study, laundry room, pantry, patio, veranda, loggia
- **Sleeps - bed(s) :**
2 double bed(s), 1 king-size bed(s), 1 sofa bed(s) 2 pers, 2 baby cot(s)
- **Guest facilities :**
T.V., hi-fi system, DVD player, board games, book collection, t.v points, telephone, internet access, high speed internet access, wifi, wardrobe, cupboard, Hanging wardrobe, safe deposit box, hair dryer, mosquito nets, partly air conditioned, Glazed in area, Skylights, Curtains, Blinds, Rolling shutters, electric shutters, burgular alarm, remote controlled gates
- **Appliances :**
Crockery/cuttlery, kitchen utensils, cafetiere, electric coffee maker, electric espresso coffee maker, electric kettle, toaster, juicer, food processor, crepe maker, meat grill, electric cooker, electric hobs, oven, micro-wave oven, refridgerator, freezer, ice maker, dish washer, washing machine, clothes dryer, vacuum cleaner, iron, ironing board

Exterior

- **Ground surface :**
0.37 acre
- **Outside accommodation :**
Covered terrace 485 Sq.ft.
- **Outside setting :**
Enclosed grounds 0.37 acre, tropical garden > 0.25 acre, lawn 0.25 acre., wooded park 0.37 acre, woods, palm grove, natural pools
- **Outside amenities :**
Summer living area, outside bar, BBQ, garden table(s), 8 garden seat(s), trolley on wheels, garden seated area, 6 sun recliner (s), outside shower facilities



view from the bedroom

Services

- **Washing :**
Sheets, Towels, Linen, Quilt(s), Pillows
- **House :**
Cleaning supplement (1 X / per week +£32*), Cleaning on departure supplement (+£134*), Parking
- **Personnel :**
Staff supplement (+£11*), Chef(s) supplement (+£11*), Baby sitting supplement
- **Restauration :**
Locally produced meals supplement

For your guidance

- **For your guidance**
Children welcome
Pets accepted under certain conditions (ask the owner)
Present on site : pets
Mobile telephone network coverage
Water : hot/cold
Local voltage supply : 220-240V / 50Hz
Electricity supply : mains
- **Handicapped people welcome**
Wheelchair access



shower room

Photo album - 1



View from the property



view from the garden/park



view from the kitchen



shower room

Photo album - 2



view from the bedroom



shower room



shower room



southerly view



view from the garden/park



aerial view

Location



Location & Access



GPS coordinates in degrees, minutes, seconds: Latitude 16°14'34.2"N - Longitude 61°20'20.2"W ([Dwelling](#))

Address

→ LE HELLEUX
97180 Sainte-Anne

• Airport Guadeloupe Pôle Caraïbes

→ Pointe-à-Pitre, Grande-Terre,
Guadeloupe
→ Distance : 18.5mi.
→ Time : 50'

- Saint-François : (8mi.)
- Le Gosier : (9mi.)

Contact

Spoken
languages



Luxury holiday letting
Grande-Terre - Sainte-Anne
Luxury Villa

[Book now](#)

Availability calendar - from : november 2018

| Nov | Th | F | Sa | Su | M | Tu | W | Th | F | Sa | Su | M | Tu | W | Th | F | Sa | Su | M | Tu | W | Th | F | Sa | Su | M | Tu | W | Th | F |
|------|----|---|----|----|---|----|---|----|---|----|----|----|----|----|----|----|----|----|----|----|----|----|----|----|----|----|----|----|----|----|
| 2018 | 1 | 2 | 3 | 4 | 5 | 6 | 7 | 8 | 9 | 10 | 11 | 12 | 13 | 14 | 15 | 16 | 17 | 18 | 19 | 20 | 21 | 22 | 23 | 24 | 25 | 26 | 27 | 28 | 29 | 30 |
| | | | | | | | | | | | | | - | - | - | - | - | - | - | - | - | - | - | - | - | - | - | - | - | - |

| Dec | Sa | Su | M | Tu | W | Th | F | Sa | Su | M | Tu | W | Th | F | Sa | Su | M | Tu | W | Th | F | Sa | Su | M | | | | | | | |
|------|----|----|---|----|---|----|---|----|----|----|----|----|----|----|----|----|----|----|----|----|----|----|----|----|----|----|----|----|----|----|----|
| 2018 | 1 | 2 | 3 | 4 | 5 | 6 | 7 | 8 | 9 | 10 | 11 | 12 | 13 | 14 | 15 | 16 | 17 | 18 | 19 | 20 | 21 | 22 | 23 | 24 | 25 | 26 | 27 | 28 | 29 | 30 | 31 |
| | - | - | - | - | - | - | - | - | - | - | - | - | - | - | - | - | - | - | - | - | - | - | - | - | - | - | - | - | - | - | |

| Jan | Tu | W | Th | F | Sa | Su | M | Tu | W | Th | F | Sa | Su | M | Tu | W | Th | F | Sa | Su | M | Tu | W | Th | F | Sa | Su | M | Tu | W | Th |
|------|----|---|----|---|----|----|---|----|---|----|----|----|----|----|----|----|----|----|----|----|----|----|----|----|----|----|----|----|----|----|----|
| 2019 | 1 | 2 | 3 | 4 | 5 | 6 | 7 | 8 | 9 | 10 | 11 | 12 | 13 | 14 | 15 | 16 | 17 | 18 | 19 | 20 | 21 | 22 | 23 | 24 | 25 | 26 | 27 | 28 | 29 | 30 | 31 |
| | - | - | - | - | - | - | - | - | - | - | - | - | - | - | - | - | - | - | - | - | - | - | - | - | - | - | - | - | - | - | - |

| Feb | F | Sa | Su | M | Tu | W | Th | F | Sa | Su | M | Tu | W | Th | F | Sa | Su | M | Tu | W | Th | | | | | | | |
|------|---|----|----|---|----|---|----|---|----|----|----|----|----|----|----|----|----|----|----|----|----|----|----|----|----|----|----|----|
| 2019 | 1 | 2 | 3 | 4 | 5 | 6 | 7 | 8 | 9 | 10 | 11 | 12 | 13 | 14 | 15 | 16 | 17 | 18 | 19 | 20 | 21 | 22 | 23 | 24 | 25 | 26 | 27 | 28 |
| | - | - | - | - | - | - | - | - | - | - | - | - | - | - | - | - | - | - | - | - | - | - | - | - | - | - | - | - |

| Mar | F | Sa | Su | M | Tu | W | Th | F | Sa | Su | M | Tu | W | Th | F | Sa | Su | M | Tu | W | Th | F | Sa | Su | | | | | | | |
|------|---|----|----|---|----|---|----|---|----|----|----|----|----|----|----|----|----|----|----|----|----|----|----|----|----|----|----|----|----|----|----|
| 2019 | 1 | 2 | 3 | 4 | 5 | 6 | 7 | 8 | 9 | 10 | 11 | 12 | 13 | 14 | 15 | 16 | 17 | 18 | 19 | 20 | 21 | 22 | 23 | 24 | 25 | 26 | 27 | 28 | 29 | 30 | 31 |
| | - | - | - | - | - | - | - | - | - | - | - | - | - | - | - | - | - | - | - | - | - | - | - | - | - | - | - | - | - | - | |

| Apr | M | Tu | W | Th | F | Sa | Su | M | Tu | W | Th | F | Sa | Su | M | Tu | W | Th | F | Sa | Su | M | Tu | W | Th | F | Sa | Su | M | Tu |
|------|---|----|---|----|---|----|----|---|----|----|----|----|----|----|----|----|----|----|----|----|----|----|----|----|----|----|----|----|----|----|
| 2019 | 1 | 2 | 3 | 4 | 5 | 6 | 7 | 8 | 9 | 10 | 11 | 12 | 13 | 14 | 15 | 16 | 17 | 18 | 19 | 20 | 21 | 22 | 23 | 24 | 25 | 26 | 27 | 28 | 29 | 30 |
| | - | - | - | - | - | - | - | - | - | - | - | - | - | - | - | - | - | - | - | - | - | - | - | - | - | - | - | - | - | - |

| May | W | Th | F | Sa | Su | M | Tu | W | Th | F | Sa | Su | M | Tu | W | Th | F | Sa | Su | M | Tu | W | Th | F | Sa | Su | M | Tu | W | Th | F |
|------|---|----|---|----|----|---|----|---|----|----|----|----|----|----|----|----|----|----|----|----|----|----|----|----|----|----|----|----|----|----|----|
| 2019 | 1 | 2 | 3 | 4 | 5 | 6 | 7 | 8 | 9 | 10 | 11 | 12 | 13 | 14 | 15 | 16 | 17 | 18 | 19 | 20 | 21 | 22 | 23 | 24 | 25 | 26 | 27 | 28 | 29 | 30 | 31 |
| | - | - | - | - | - | - | - | - | - | - | - | - | - | - | - | - | - | - | - | - | - | - | - | - | - | - | - | - | - | - | - |

| June | Sa | Su | M | Tu | W | Th | F | Sa | Su | M | Tu | W | Th | F | Sa | Su | M | Tu | W | Th | F | Sa | Su | | | | | | | |
|------|----|----|---|----|---|----|---|----|----|----|----|----|----|----|----|----|----|----|----|----|----|----|----|----|----|----|----|----|----|----|
| 2019 | 1 | 2 | 3 | 4 | 5 | 6 | 7 | 8 | 9 | 10 | 11 | 12 | 13 | 14 | 15 | 16 | 17 | 18 | 19 | 20 | 21 | 22 | 23 | 24 | 25 | 26 | 27 | 28 | 29 | 30 |
| | - | - | - | - | - | - | - | - | - | - | - | - | - | - | - | - | - | - | - | - | - | - | - | - | - | - | - | - | - | - |

| Jul | M | Tu | W | Th | F | Sa | Su | M | Tu | W | Th | F | Sa | Su | M | Tu | W | Th | F | Sa | Su | M | Tu | W | Th | F | Sa | Su | M | Tu | W |
|------|---|----|---|----|---|----|----|---|----|----|----|----|----|----|----|----|----|----|----|----|----|----|----|----|----|----|----|----|----|----|----|
| 2019 | 1 | 2 | 3 | 4 | 5 | 6 | 7 | 8 | 9 | 10 | 11 | 12 | 13 | 14 | 15 | 16 | 17 | 18 | 19 | 20 | 21 | 22 | 23 | 24 | 25 | 26 | 27 | 28 | 29 | 30 | 31 |
| | - | - | - | - | - | - | - | - | - | - | - | - | - | - | - | - | - | - | - | - | - | - | - | - | - | - | - | - | - | - | - |

| Aug | Th | F | Sa | Su | M | Tu | W | Th | F | Sa | Su | M | Tu | W | Th | F | Sa | Su | M | Tu | W | Th | F | Sa | | | | | | | |
|------|----|---|----|----|---|----|---|----|---|----|----|----|----|----|----|----|----|----|----|----|----|----|----|----|----|----|----|----|----|----|----|
| 2019 | 1 | 2 | 3 | 4 | 5 | 6 | 7 | 8 | 9 | 10 | 11 | 12 | 13 | 14 | 15 | 16 | 17 | 18 | 19 | 20 | 21 | 22 | 23 | 24 | 25 | 26 | 27 | 28 | 29 | 30 | 31 |
| | - | - | - | - | - | - | - | - | - | - | - | - | - | - | - | - | - | - | - | - | - | - | - | - | - | - | - | - | - | - | |



Luxury holiday letting
Grande-Terre - Guadeloupe
Luxury Villa

8

[Book now](#)






Availability calendar - from : august 2019

| Sep | Su | M | Tu | W | Th | F | Sa | Su | M | Tu | W | Th | F | Sa | Su | M | Tu | W | Th | F | Sa | Su | M | | | | | | | |
|------|----|---|----|---|----|---|----|----|---|----|----|----|----|----|----|----|----|----|----|----|----|----|----|----|----|----|----|----|----|----|
| 2019 | 1 | 2 | 3 | 4 | 5 | 6 | 7 | 8 | 9 | 10 | 11 | 12 | 13 | 14 | 15 | 16 | 17 | 18 | 19 | 20 | 21 | 22 | 23 | 24 | 25 | 26 | 27 | 28 | 29 | 30 |
| - | - | - | - | - | - | - | - | - | - | - | - | - | - | - | - | - | - | - | - | - | - | - | - | - | - | - | - | - | - | |

| Oct | Tu | W | Th | F | Sa | Su | M | Tu | W | Th | F | Sa | Su | M | Tu | W | Th | F | Sa | Su | M | Tu | W | Th | | | | | | | |
|------|----|---|----|---|----|----|---|----|---|----|----|----|----|----|----|----|----|----|----|----|----|----|----|----|----|----|----|----|----|----|----|
| 2019 | 1 | 2 | 3 | 4 | 5 | 6 | 7 | 8 | 9 | 10 | 11 | 12 | 13 | 14 | 15 | 16 | 17 | 18 | 19 | 20 | 21 | 22 | 23 | 24 | 25 | 26 | 27 | 28 | 29 | 30 | 31 |
| - | - | - | - | - | - | - | - | - | - | - | - | - | - | - | - | - | - | - | - | - | - | - | - | - | - | - | - | - | - | | |

[Month : Next >>](#)

Rental rates - Luxury Villa - from 4 to 6 Person(s)

| Rates | Night | Weekend | week | 2 weeks | Month |
|--|-------|---------|--------|---------|-------|
|  Low season | - | - | £1878* | £3204* | - |
|  Mid season | - | - | £2029* | £3649* | - |
|  High season | - | - | £2181* | £3827* | - |
|  Festive specials | - | - | £2421* | £4317* | - |
|  Promotional period | - | - | £1424* | £2492* | - |

[Book now](#)

Booking conditions

• Reservation

- Payment made upon reservation : 25% of rental sum
- Payment balance : 1 week before the stay
- Deposit required : £1335*

• rentals

- Service charges included
- Day tax included
- Cleaning charge on departure included

[▶ Book now](#)

[▶ Contact the owner](#)

Contact

Spoken languages



Accepted methods of payment

- Bank transfer (wire) • Cheque • Cash

Contact directly the property owners

www.ihacom.co.uk

Advert No.

37634

[>> Book now <<](#)

* Converted at the rate indicated : €100 = \$116.85 = £89

Advert No. 37634

www.ihacom.co.uk



[>> HOLIDAY LETTINGS](#)

BOOK DIRECT WITH THE OWNERS