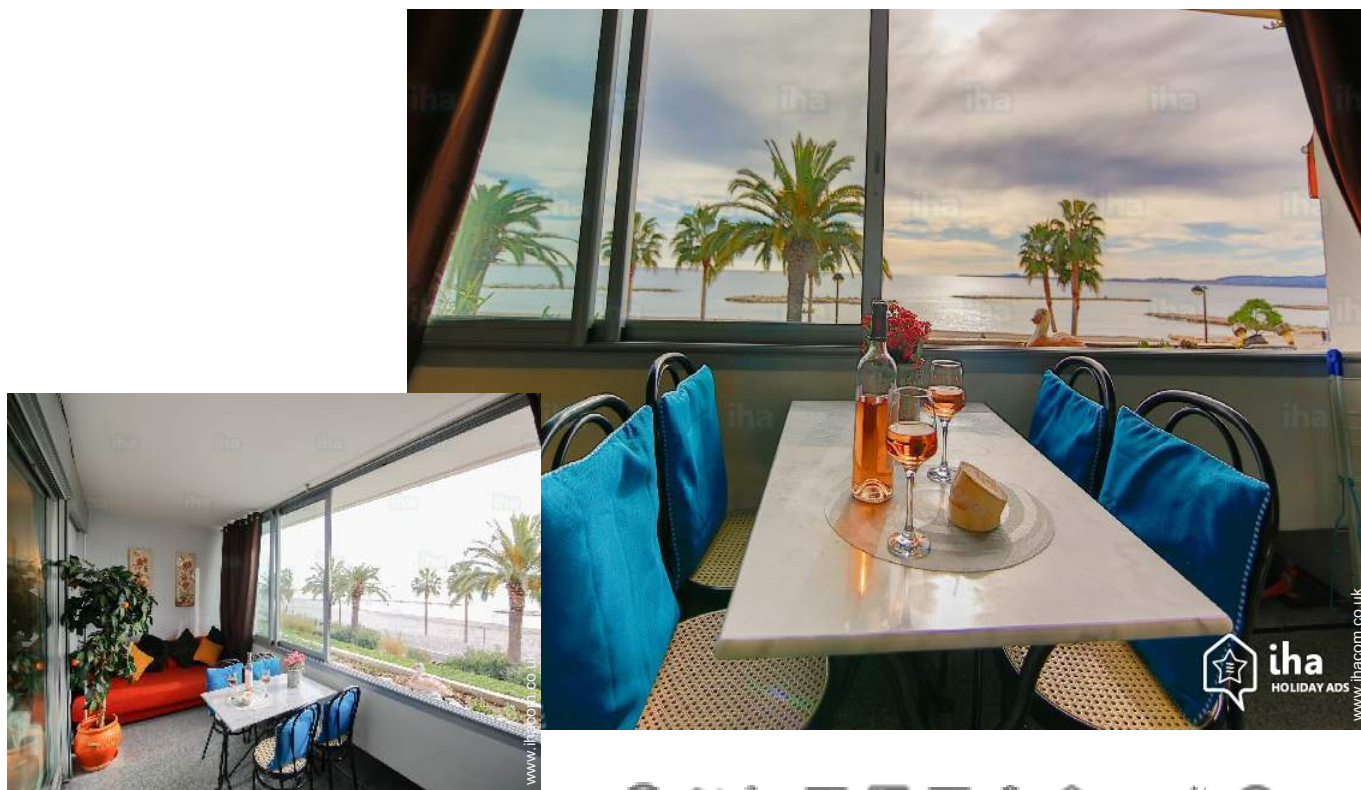


# Luxury holiday letting Saint-Laurent-du-Var "Horizons"

Namaste! In ancient cultures, it means the divine in me welcomes the divine in you. I invite you to experience precious moments of pleasure and harmony with nature in this cosy apartment right on the beach. Life is beautiful!



Luxury Flat - Apartment 2nd floor, shared entrance, in a(an) Residence 4 floors

Setting : picturesque, suitable for a relaxing break

Capacity : from 1 to 4 person(s)

Bedroom(s) : 1

Room(s) : 2

Saint-Laurent-du-Var - Alpes Maritimes - French Riviera (06) - Provence-Alpes-Côte d'Azur (French Riviera)

France

Reservation : +33 (0) 676932535 (France)

Advert No. 50801

www.ihacom.co.uk



>> HOLIDAY LETTINGS

BOOK DIRECT WITH THE OWNERS

Luxury holiday letting



Luxury Flat - Apartment 2nd floor, shared entrance, in a(an) Residence 4 floors

- **Ideal for couples, sporty types**
- **View :** panoramic, unobscured, sea/ ocean, fantastic sunset
- **Setting :** picturesque, suitable for a relaxing break
- **Exposure :** South

" On entering this bright and spacious apartment, you will be greeted by stunning panoramic views of the Mediterranean sea which you can enjoy from your own private, covered terrace. "

Assets

- **Parking :**  
 Covered parking : carport. Parking uncovered : reserved bay.
- **Advantages :**  
 Courtesy car

**Benefits :**  
 Direct access to the beach



Surroundings & location



Seaside

" You can enjoy direct access onto one of the best beaches on the Riviera – ideal for children and families, the beach also offers handicapped access. A short 5 minute stroll away you'll find an array of restaurants and bars and a little further, Cap3000 shopping centre offers the latest in fashion and gourmet food and wine shopping. "

Leisure

- **Leisure activities less than 20 km / 12 miles :**  
 Bathing, scuba diving, windsurfing, sailing, kite surfing, canoeing, golf
- **Supervised :**  
 Sailing school
- **Attractions and relaxation :**  
 Bar/pub, discotheque, restaurant, cinema, park and garden, exhibition centre, opera house, festivals, local craftshop, casino, beauticians

Surroundings

- **Locality :**  
 Sea/ocean 330'  
 Sandy beach 330'  
 Shingle beach 330'  
 9 hole golf course 6mi.  
 18 hole golf course 9mi.  
 Windsurfing spots 330'  
 Watersports centre 330'  
 Marina 4.5mi.
- **Amenities :**  
 Town centre  
 Bus stop / bus station 0.3mi.  
 Tube station 0.3mi.  
 Bike/mountain bike hire 0.3mi.  
 Car rental 1.5mi.  
 Breadshop 0.3mi.  
 Local shops 0.3mi.  
 Supermarket 0.3mi.  
 High class retailers 0.3mi.  
 Hairdressing salon 0.3mi.  
 Internet cafe 0.3mi.  
 Post office 0.62mi.  
 Cash point 0.3mi.  
 Chemist 0.3mi.  
 Hospital 4.5mi.





### Interior

- **Receive up to :**  
from 1 to 4 person(s) (4 adults)
- **Liveable floor area :**  
600 Sq.ft.
- **Interior layout :**  
2 Room(s), 1 bedroom(s), 1 bathroom, 1 WC, living room, american style kitchen, loggia
- **Sleeps - bed(s) :**  
1 sofa bed(s) 2 pers, 2 twin beds (standard)
- **Guest facilities :**  
Lift, T.V., DVD player, cable/satelite, internet access, wifi, wardrobe, hair dryer, heated towel rail, electric heating, Curtains, Double glazed, electric shutters, digipad entry system, fire alarm, remote controlled gates, digipad entry gates
- **Appliances :**  
Crockery/cuttlery, kitchen utensils, electric espresso coffee maker, electric kettle, toaster, gas cooker, oven, refridgerator, freezer, dish washer, washing machine, vacuum cleaner, iron, ironing board

### Exterior

- **Ground surface :**  
< 1,076 Sq.ft.
- **Outside accommodation :**  
Covered terrace 110 Sq.ft.



### Services

- **Washing :**  
Sheets supplement (1 X / per week +£5\*), Towels supplement (1 X / per week +£5\*), Linen supplement (1 X / per week +£5\*), Beach towels supplement (1 X / per week + £5\*), Quilt(s), Pillows
- **House :**  
Cleaning on departure supplement (+£55\*), Caretaker/concierge, Parking supplement (+ £46\*), Airport transfers supplement (+£18\*)
- **Personnel :**  
Chauffeur supplement (+£18\*)

### For your guidance

- **For your guidance**  
Children welcome  
Pets accepted under certain conditions (ask the owner)  
Non smoking rental, mobile telephone network coverage  
Water : hot/cold  
Local voltage supply : 220-240V / 50Hz



Photo album - 1

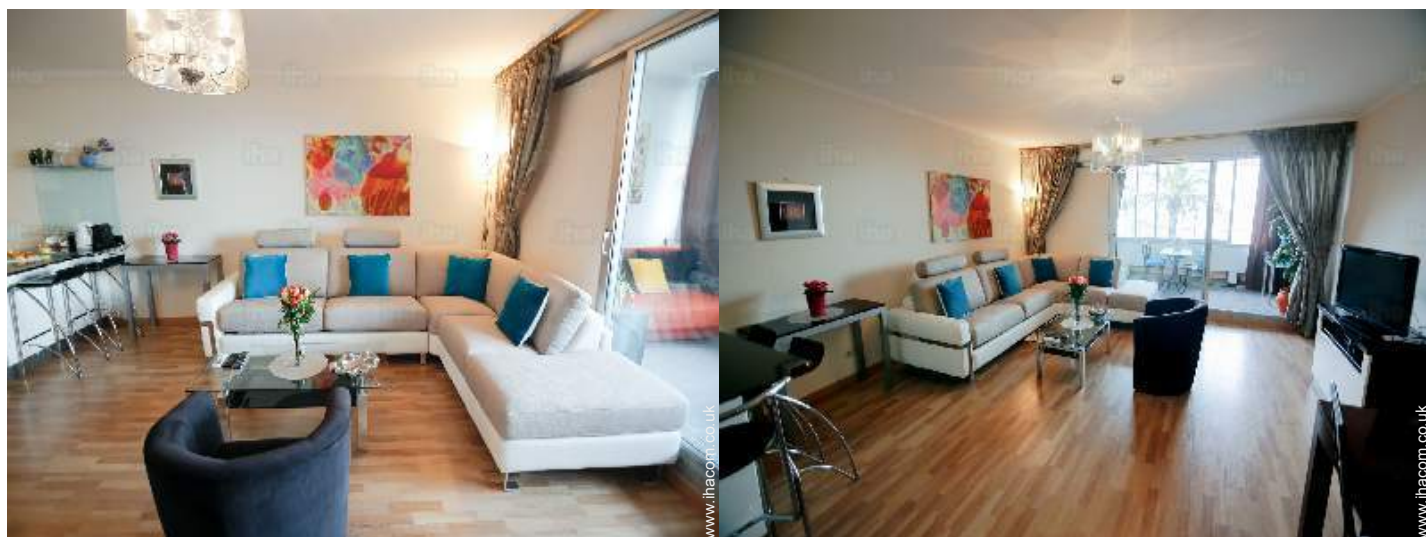
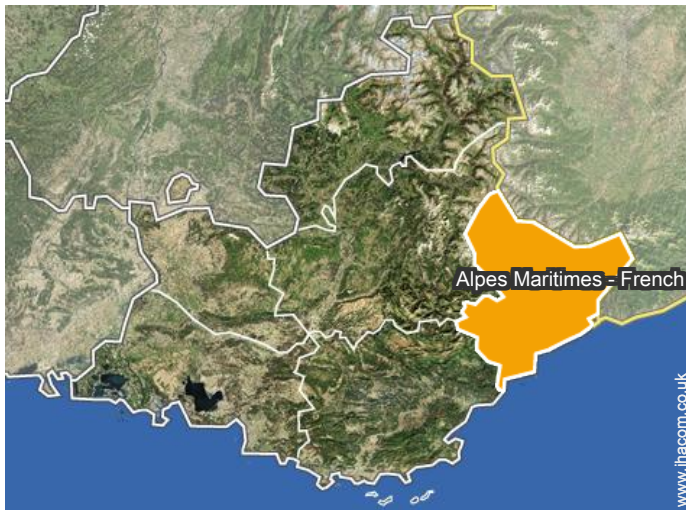


Photo album - 2



### Location



### Location & Access

" Situated only 5 min by car from the Nice Cote d'Azur airport, this property offers a perfect base for exploring the French Riviera, neighbouring Monaco and even the picturesque Italian towns of San Remo and Ventimiglia – all within 1 hour's drive. "



GPS coordinates in degrees, minutes, seconds: Latitude 43°39'31"N - Longitude 7° 11'38"E ([Dwelling](#))

#### Address

→ 131 Avenue de Verdun  
06700 Saint-Laurent-du-Var

● [Airport Nice Côte d'Azur](#)

→ Nice, Alpes Maritimes - French Riviera,  
Provence-Alpes-Côte d'Azur (French  
Riviera), France

→ Distance : 1.25mi.

● [Train station Saint-Laurent-du-Var](#)

→ Saint-Laurent-du-Var, Alpes Maritimes -  
French Riviera, Provence-Alpes-Côte  
d'Azur (French Riviera), France

→ Distance : 0.93mi.

- Antibes : (4.5mi.)
- Cannes : (9mi.)
- Nice : (3mi.)

### Contact

Spoken  
languages



# Luxury holiday letting Saint-Laurent-du-Var - France "Horizons"

[Book now](#)

## Availability calendar - from : june 2021

June	Tu	W	Th	F	Sa	Su	M	Tu	W	Th	F	Sa	Su	M	Tu	W	Th	F	Sa	Su	M	Tu	W	Th	F	Sa	Su	M	Tu	W
2021	1	2	3	4	5	6	7	8	9	10	11	12	13	14	15	16	17	18	19	20	21	22	23	24	25	26	27	28	29	30

Jul	Th	F	Sa	Su	M	Tu	W	Th	F	Sa	Su	M	Tu	W	Th	F	Sa	Su	M	Tu	W	Th	F	Sa	Su	M	Tu	W	Th	F	Sa
2021	1	2	3	4	5	6	7	8	9	10	11	12	13	14	15	16	17	18	19	20	21	22	23	24	25	26	27	28	29	30	31
	-	-	-	-	-	-	-	-	-	-	-	-	-	-	-	-	-	-	-	-	-	-	-	-	-	-	-	-	-	-	

Aug	Su	M	Tu	W	Th	F	Sa	Su	M	Tu	W	Th	F	Sa	Su	M	Tu	W	Th	F	Sa	Su	M	Tu	W	Th	F	Sa	Su	M	Tu
2021	1	2	3	4	5	6	7	8	9	10	11	12	13	14	15	16	17	18	19	20	21	22	23	24	25	26	27	28	29	30	31
	-	-	-	-	-	-	-	-	-	-	-	-	-	-	-	-	-	-	-	-	-	-	-	-	-	-	-	-	-	-	

Sep	W	Th	F	Sa	Su	M	Tu	W	Th	F	Sa	Su	M	Tu	W	Th	F	Sa	Su	M	Tu	W	Th	F	Sa	Su	M	Tu	W	Th
2021	1	2	3	4	5	6	7	8	9	10	11	12	13	14	15	16	17	18	19	20	21	22	23	24	25	26	27	28	29	30
	-	-	-	-	-	-	-	-	-	-	-	-	-	-	-	-	-	-	-	-	-	-	-	-	-	-	-	-	-	

Oct	F	Sa	Su	M	Tu	W	Th	F	Sa	Su	M	Tu	W	Th	F	Sa	Su	M	Tu	W	Th	F	Sa	Su	M	Tu	W	Th	F	Sa	Su
2021	1	2	3	4	5	6	7	8	9	10	11	12	13	14	15	16	17	18	19	20	21	22	23	24	25	26	27	28	29	30	31
	-	-	-	-	-	-	-	-	-	-	-	-	-	-	-	-	-	-	-	-	-	-	-	-	-	-	-	-	-	-	

Nov	M	Tu	W	Th	F	Sa	Su	M	Tu	W	Th	F	Sa	Su	M	Tu	W	Th	F	Sa	Su	M	Tu	W	Th	F	Sa	Su	M	Tu
2021	1	2	3	4	5	6	7	8	9	10	11	12	13	14	15	16	17	18	19	20	21	22	23	24	25	26	27	28	29	30
	-	-	-	-	-	-	-	-	-	-	-	-	-	-	-	-	-	-	-	-	-	-	-	-	-	-	-	-	-	

Dec	W	Th	F	Sa	Su	M	Tu	W	Th	F	Sa	Su	M	Tu	W	Th	F	Sa	Su	M	Tu	W	Th	F	Sa	Su	M	Tu	W	Th	F
2021	1	2	3	4	5	6	7	8	9	10	11	12	13	14	15	16	17	18	19	20	21	22	23	24	25	26	27	28	29	30	31
	-	-	-	-	-	-	-	-	-	-	-	-	-	-	-	-	-	-	-	-	-	-	-	-	-	-	-	-	-	-	

Jan	Sa	Su	M	Tu	W	Th	F	Sa	Su	M	Tu	W	Th	F	Sa	Su	M	Tu	W	Th	F	Sa	Su	M	Tu	W	Th	F	Sa	Su	M
2022	1	2	3	4	5	6	7	8	9	10	11	12	13	14	15	16	17	18	19	20	21	22	23	24	25	26	27	28	29	30	31
	-	-	-	-	-	-	-	-	-	-	-	-	-	-	-	-	-	-	-	-	-	-	-	-	-	-	-	-	-	-	

Feb	Tu	W	Th	F	Sa	Su	M	Tu	W	Th	F	Sa	Su	M	Tu	W	Th	F	Sa	Su	M	Tu	W	Th	F	Sa	Su	M
2022	1	2	3	4	5	6	7	8	9	10	11	12	13	14	15	16	17	18	19	20	21	22	23	24	25	26	27	28
	-	-	-	-	-	-	-	-	-	-	-	-	-	-	-	-	-	-	-	-	-	-	-	-	-	-	-	-

Mar	Tu	W	Th	F	Sa	Su	M	Tu	W	Th	F	Sa	Su	M	Tu	W	Th	F	Sa	Su	M	Tu	W	Th	F	Sa	Su	M	Tu	W	Th
2022	1	2	3	4	5	6	7	8	9	10	11	12	13	14	15	16	17	18	19	20	21	22	23	24	25	26	27	28	29	30	31
	-	-	-	-	-	-	-	-	-	-	-	-	-	-	-	-	-	-	-	-	-	-	-	-	-	-	-	-	-	-	

Mid season
  High season
  Low season
  Festive specials



Availability calendar - from : march 2022

Apr	F	Sa	Su	M	Tu	W	Th	F	Sa	Su	M	Tu	W	Th	F	Sa	Su	M	Tu	W	Th	F	Sa	
2022	1	2	3	4	5	6	7	8	9	10	11	12	13	14	15	16	17	18	19	20	21	22	23	24
	-	-	-	-	-	-	-	-	-	-	-	-	-	-	-	-	-	-	-	-	-	-	-	-

May	Su	M	Tu	W	Th	F	Sa	Su	M	Tu	W	Th	F	Sa	Su	M	Tu	W	Th	F	Sa	Su	M	Tu
2022	1	2	3	4	5	6	7	8	9	10	11	12	13	14	15	16	17	18	19	20	21	22	23	24
	-	-	-	-	-	-	-	-	-	-	-	-	-	-	-	-	-	-	-	-	-	-	-	-

■ Mid season     
 ■ High season     
 ■ Low season     
 ■ Festive specials

[Month : Next >>](#)

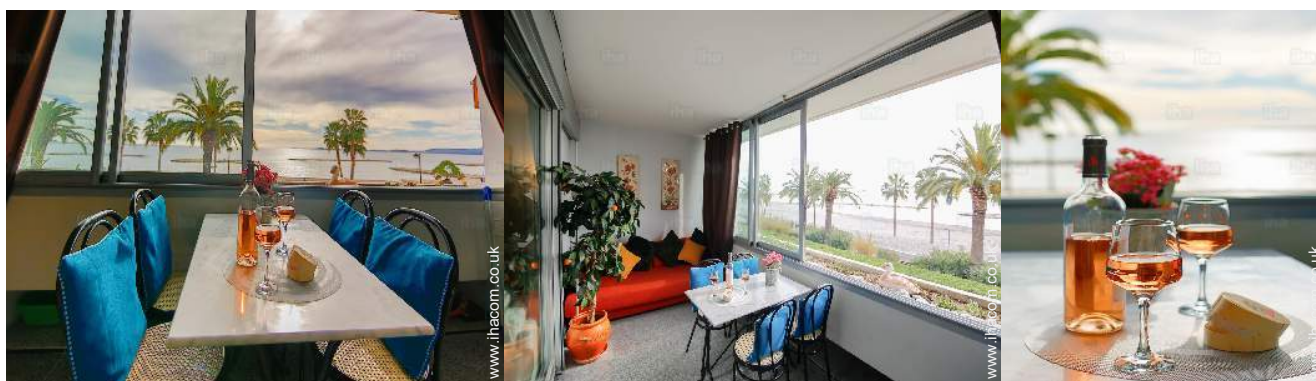
Rental rates - Luxury Flat - Apartment - from 1 to 4 Person(s)

Rates	Night	Weekend	week	2 weeks	Month
<span style="color: #90EE90;">■</span> Low season	£82* ↓ > 3	£182*	£501*	£910*	£1183*
<span style="color: #ADD8E6;">■</span> Mid season	£91* ↓ > 3	£182*	£546*	£1001*	£1229*
<span style="color: #FF0000;">■</span> High season	£109* > 3	£109*	£764*	£1456*	-
<span style="color: #FF00FF;">■</span> Festive specials	£109* > 3	£109*	£764*	-	-
<span style="color: #FFA500;">■</span> Promotional period	£91* ↓	-	-	-	-

↓ Reducing rates > Minimum Night

[Book now](#)





### Booking conditions

#### • Reservation

- Payment made upon reservation : 30% of rental sum
- Payment balance : on handing over the keys
- Deposit required : £273\*

#### • rentals

- Service charges included
- Day tax in addition
- Cleaning charge levy on departure : £55\*

[▶ Book now](#)

[▶ Contact the owner](#)

### Accepted methods of payment

- Bank transfer (wire) • Cash

Contact directly the property owners

[www.ihacom.co.uk](http://www.ihacom.co.uk)

Advert No.

50801

>> [Book now](#) <<

### Contact

Spoken languages



\* Converted at the rate indicated : €100 = \$110 = £91

Advert No. 50801

[www.ihacom.co.uk](http://www.ihacom.co.uk)

