

Luxury holiday letting Poupehan "De Oude Pastorie"



Luxury Residence, detached, 3 floors,
separate entrance, in a(an) Hamlet

Setting : bucolic, calm

Capacity : from 2 to 20 person(s)

Bedroom(s) : 7

Poupehan - Province of Luxembourg - Walloon

Belgium

Reservation : +32 (0) 475 27 83 30 (Belgium)

Advert No. 38408

www.ihacom.co.uk



>> HOLIDAY LETTINGS

BOOK DIRECT WITH THE OWNERS

Luxury holiday letting



Luxury Residence, detached, 3 floors, separate entrance, in a(an) Hamlet

- **Ideal for large families, group**
- **View :** mountain, garden/park, forest
- **Setting :** bucolic, calm

Assets

- **Advantages :**
Sauna, billiard table, table football, pétanque pitch, 4 pétanque set(s)
- **baby equipment :**
Baby chair



enclosed grounds

Surroundings & location



Mountain



Fishing

Leisure

- **Leisure activities less than 20 km / 12 miles :**

Cross-country skiing, bathing, canoeing, golf, tennis, pathway, mountain bike (path), paragliding, horse trekking, mini-golf, ATV/ Quad Bike, go-karting, paintball, big game hunting, angling, pétanque pitch

- **Attractions and relaxation :**

Restaurant, cinema, park and garden, historical site, museum, antiques & bric-a-brac

Surroundings

- **Locality :**

Sandy beach 990'
River 990'
Forest <165'

- **Amenities :**

Village centre <165'
Bus stop / bus station 165'
Boat rental 990'
Breadshop 1.85mi.
Supermarket 1.85mi.
High class retailers 6mi.
Post office 6mi.
Cash point 6mi.
Chemist 1.85mi.
Doctor 1.85mi.
Hospital 25mi.



sitting room



pétanque pitch



sitting room

Interior

- **Receive up to :**

from 2 to 20 person(s)

- **Liveable floor area :**

3,300 Sq.ft.

- **Interior layout :**

7 bedroom(s), 1 bathroom, 7 shower room, 8 WC, sitting room 485 Sq.ft., american style kitchen, dining room, cosy nook, games room, laundry room

- **Sleeps - bed(s) :**

6 double bed(s), 1 single bed(s), 3 bunk beds, 2 baby cot(s)

- **Guest facilities :**

T.V., hi-fi system, videoplayer, DVD player, board games, cable/satelite, internet access, wifi, wardrobe, cupboard, power shower, central heating, wood-burning stove, Skylights, Curtains, Double glazed, fire alarm

- **Appliances :**

Crockery/cuttlery, kitchen utensils, cafetiere, electric coffee maker, electric kettle, toaster, juicer, gas cooker, electric hobs, oven, micro-wave oven, extractor hood, refridgerator, freezer, dish washer, washing machine, clothes dryer, vacuum cleaner



sitting room

Exterior

- **Ground surface :**

6,500 Sq.ft.

- **Outside accommodation :**

Terrace 345 Sq.ft., covered terrace 237 Sq.ft., sundeck

- **Outside setting :**

Enclosed grounds 3,300 Sq.ft., garden 4,300 Sq.ft., lawn 1,600 Sq.ft.

- **Outside amenities :**

BBQ, garden table(s), 20 garden seat(s), trolley on wheels, parasol, child's swing, climbing frame, sand pit



kitchen

Services

- **Washing :**

Sheets (1 X / per week), Quilt(s), Pillows

- **House :**

Cleaning on departure supplement (+£116*), Parking

For your guidance

- **For your guidance**

Children welcome

No pet allowed

Mobile telephone network coverage, personal transport advisable

Water : hot/cold

Local voltage supply : 220-240V / 50Hz

Photo album - 1



enclosed grounds



pétanque pitch



sitting room



sitting room



sitting room

Photo album - 2



kitchen



kitchen



kitchen



bedroom



bedroom



bedroom



bunk beds



bedroom

Photo album - 3



shower room



dining room



garden



terrace



south-westerly view



billiard table

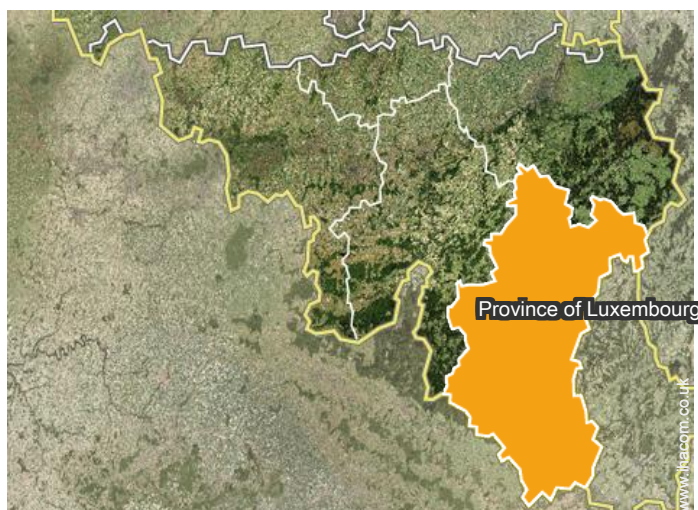


sauna



table football

Location



Location & Access



GPS coordinates in degrees, minutes, seconds: Latitude 49°48'42"N - Longitude 5°0'10"E ([Dwelling](#))

Address

→ Rue de La Rochette 5
6830 Poupehan

• **Motorway (junction) E 411 afslag 25**

→ Libramont, Province of Luxembourg,
Walloon, Belgium

→ Distance : 21,7mi.

→ Time : 30'

- Rochehaut : (2.5mi.)
- Corbion : (1.85mi.)
- Bouillon : (7mi.)

Contact

Spoken languages



Luxury holiday letting
Province of Luxembourg - Walloon
"De Oude Pastorie"

Availability calendar - from : december 2017

Dec	F	Sa	Su	M	Tu	W	Th	F	Sa	Su	M	Tu	W	Th	F	Sa	Su	M	Tu	W	Th	F	Sa	Su							
2017	1	2	3	4	5	6	7	8	9	10	11	12	13	14	15	16	17	18	19	20	21	22	23	24	25	26	27	28	29	30	31
															-	-	-	-	-	-	-	-	-	-	-	-	-	-	-	-	

Jan	M	Tu	W	Th	F	Sa	Su	M	Tu	W	Th	F	Sa	Su	M	Tu	W	Th	F	Sa	Su	M	Tu	W							
2018	1	2	3	4	5	6	7	8	9	10	11	12	13	14	15	16	17	18	19	20	21	22	23	24	25	26	27	28	29	30	31
	-	-	-	-	-	-	-	-	-	-	-	-	-	-	-	-	-	-	-	-	-	-	-	-	-	-	-	-	-	-	

Feb	Th	F	Sa	Su	M	Tu	W	Th	F	Sa	Su	M	Tu	W	Th	F	Sa	Su	M	Tu	W								
2018	1	2	3	4	5	6	7	8	9	10	11	12	13	14	15	16	17	18	19	20	21	22	23	24	25	26	27	28	
	-	-	-	-	-	-	-	-	-	-	-	-	-	-	-	-	-	-	-	-	-	-	-	-	-	-	-	-	-

Mar	Th	F	Sa	Su	M	Tu	W	Th	F	Sa	Su	M	Tu	W	Th	F	Sa	Su	M	Tu	W	Th	F	Sa							
2018	1	2	3	4	5	6	7	8	9	10	11	12	13	14	15	16	17	18	19	20	21	22	23	24	25	26	27	28	29	30	31
	-	-	-	-	-	-	-	-	-	-	-	-	-	-	-	-	-	-	-	-	-	-	-	-	-	-	-	-	-	-	

Apr	Su	M	Tu	W	Th	F	Sa	Su	M	Tu	W	Th	F	Sa	Su	M	Tu	W	Th	F	Sa	Su	M							
2018	1	2	3	4	5	6	7	8	9	10	11	12	13	14	15	16	17	18	19	20	21	22	23	24	25	26	27	28	29	30
	-	-	-	-	-	-	-	-	-	-	-	-	-	-	-	-	-	-	-	-	-	-	-	-	-	-	-	-	-	-

May	Tu	W	Th	F	Sa	Su	M	Tu	W	Th	F	Sa	Su	M	Tu	W	Th	F	Sa	Su	M	Tu	W	Th							
2018	1	2	3	4	5	6	7	8	9	10	11	12	13	14	15	16	17	18	19	20	21	22	23	24	25	26	27	28	29	30	31
	-	-	-	-	-	-	-	-	-	-	-	-	-	-	-	-	-	-	-	-	-	-	-	-	-	-	-	-	-	-	

June	F	Sa	Su	M	Tu	W	Th	F	Sa	Su	M	Tu	W	Th	F	Sa	Su	M	Tu	W	Th	F	Sa							
2018	1	2	3	4	5	6	7	8	9	10	11	12	13	14	15	16	17	18	19	20	21	22	23	24	25	26	27	28	29	30
	-	-	-	-	-	-	-	-	-	-	-	-	-	-	-	-	-	-	-	-	-	-	-	-	-	-	-	-	-	-

Jul	Su	M	Tu	W	Th	F	Sa	Su	M	Tu	W	Th	F	Sa	Su	M	Tu	W	Th	F	Sa	Su	M	Tu							
2018	1	2	3	4	5	6	7	8	9	10	11	12	13	14	15	16	17	18	19	20	21	22	23	24	25	26	27	28	29	30	31
	-	-	-	-	-	-	-	-	-	-	-	-	-	-	-	-	-	-	-	-	-	-	-	-	-	-	-	-	-	-	

Aug	W	Th	F	Sa	Su	M	Tu	W	Th	F	Sa	Su	M	Tu	W	Th	F	Sa	Su	M	Tu	W	Th	F							
2018	1	2	3	4	5	6	7	8	9	10	11	12	13	14	15	16	17	18	19	20	21	22	23	24	25	26	27	28	29	30	31
	-	-	-	-	-	-	-	-	-	-	-	-	-	-	-	-	-	-	-	-	-	-	-	-	-	-	-	-	-	-	

Sep	Sa	Su	M	Tu	W	Th	F	Sa	Su	M	Tu	W	Th	F	Sa	Su	M	Tu	W	Th	F	Sa	Su							
2018	1	2	3	4	5	6	7	8	9	10	11	12	13	14	15	16	17	18	19	20	21	22	23	24	25	26	27	28	29	30
	-	-	-	-	-	-	-	-	-	-	-	-	-	-	-	-	-	-	-	-	-	-	-	-	-	-	-	-	-	-



Availability calendar - from : september 2018




Oct	M	Tu	W	Th	F	Sa	Su	M	Tu	W	Th	F	Sa	Su	M	Tu	W	Th	F	Sa	Su	M	Tu	W							
2018	1	2	3	4	5	6	7	8	9	10	11	12	13	14	15	16	17	18	19	20	21	22	23	24	25	26	27	28	29	30	31
	-	-	-	-	-	-	-	-	-	-	-	-	-	-	-	-	-	-	-	-	-	-	-	-	-	-	-	-	-	-	

Nov	Th	F	Sa	Su	M	Tu	W	Th	F	Sa	Su	M	Tu	W	Th	F	Sa	Su	M	Tu	W	Th	F							
2018	1	2	3	4	5	6	7	8	9	10	11	12	13	14	15	16	17	18	19	20	21	22	23	24	25	26	27	28	29	30
	-	-	-	-	-	-	-	-	-	-	-	-	-	-	-	-	-	-	-	-	-	-	-	-	-	-	-	-	-	

 Reserved

[Month : Next >>](#)

Rental rates - Luxury Residence - from 2 to 20 Person(s)

Rates	Night	Weekend	week	2 weeks	Month
 Low season	-	£537* (Friday)	£716* (Friday)	-	-
 Mid season	-	£672* (Friday)	£851* (Friday)	-	-
 High season	-	£805* (Friday)	£1008* (Friday)	-	-

(Check-in day)

[Book now](#)

Booking conditions

• Reservation

- Payment made upon reservation : £448*
- Payment balance :
- 2 weeks before the stay
- Deposit required : £448*

• rentals

- Service charges to be added
- Day tax included
- Cleaning charge levy on departure : £116*

[▶ Book now](#)

[▶ Contact the owner](#)

Accepted methods of payment

- Bank transfer (wire) • Cash

Contact directly the property owners

www.ihacom.co.uk

Advert No.

38408

[>> Book now <<](#)

Contact

Spoken languages



* Converted at the rate indicated : €100 = \$117.29 = £89.59

Advert No. 38408

www.ihacom.co.uk

