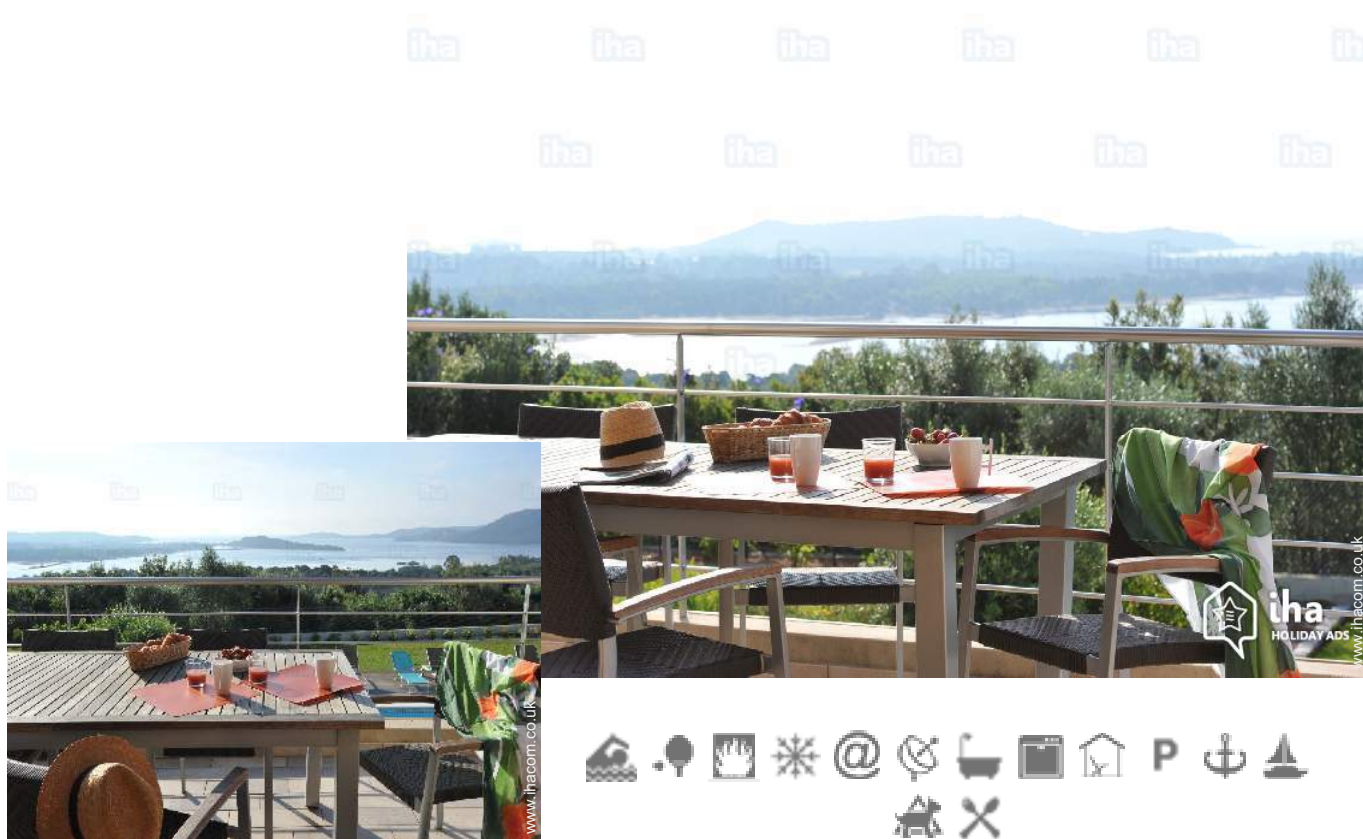


Luxury holiday letting Porto-Vecchio Luxury Villa

Luxury villa for sea-mountain 360 °, private property, pool, sport view, games.



Luxury Villa, detached, 1 floor, separate entrance, in a(an) Private property

Setting : enchanting, suitable for a relaxing break

Capacity : from 1 to 9 person(s)

Bedroom(s) : 6

Room(s) : 6



Meublés de Tourisme (5 stars)

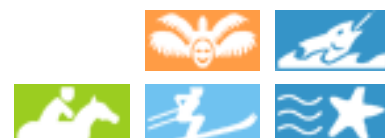
Porto-Vecchio - South Corsica (2A) - Corsica

France

Reservation : +33 (0) 495700185 (France)

Advert No. 57960

www.ihacom.co.uk



>> HOLIDAY LETTINGS

BOOK DIRECT WITH THE OWNERS

Luxury holiday letting



Luxury Villa, detached, 1 floor, separate entrance, in a(an) Private property

- **Ideal for all age groups**
- **View :** panoramic, not overlooked, dominant, sea/ocean, swimming pool, river
- **Setting :** enchanting, suitable for a relaxing break
- **Exposure :** South-east

" New Villa, comfortable, heated and covered new pool d removable shelter off-season, panoramic view of the entire Gulf of Porto Vecchio, solarium, all furniture, connection wi fi, kitchen bar d was the pool with patio teak 150 m2, sunshine all day large games room with a billiards table football and a fully equipped weight room , fitness, outdoor giant chess game, ping pong, badminton..."

Assets

- **Swimming pool :**
Private swimming-pool, oval (length 33', width 18'), heated, covered, illuminated, steps in, child secure, outside shower (open from '01 january' till '31 december')
- **Parking :**
Parking uncovered : 4 internal.
- **Advantages :**
Fitness machine(s), billiard table, table football, ping-pong table, ping-pong bats, volley ball court, pétanque pitch, 4 pétanque set(s), motor boat
- **baby equipment :**
Baby chair, baby changer, baby bath, baby potty, playpen, pushchair

Benefits :
Private jetty

Surroundings & location



Festival

" GET AWAY TO PORTO-VECCHIO. Paradise between sea and mountain, the region of Porto Vecchio is a destination privileged to share landscapes but also of its food quality and an incomparable variety. The Villa will be the perfect place for your family, with friends or as a couple. We attach special attention to the well-being of our clients, with a high level of benefits. New this year a boat brand new allowing the visit of all the far south. Everything is done for the quality of your stay is up to our beautiful island. Located at hundred meters of altitude, the Villa dominates all the Gulf of Porto-Vecchio, with a panoramic view from the Tower of Pinarellu in the Gulf of Porto-Vecchio, via the beaches of Saint-Cyprien and Cala Rossa Benedettu. Panoramic sea view. Nearby shops and restaurants. Beach five minutes of car. River 10 minutes from car. "

Leisure

- **Leisure activities less than 20 km / 12 miles :**

Bathing, pedalo, scuba diving, banana boat, water skiing, jet ski, surfing, windsurfing, sailing, kite surfing, canyoning, tennis, squash, riding school, mountain bike (path), boat trips, mini-golf, ten-pin bowling, paintball, fishing, pétanque pitch

- **Supervised :**

Sailing school, dive school, tennis school, riding school

- **Attractions and relaxation :**

Bar/pub, discotheque, restaurant, open air summer cinema, nature reserve, historical site, theatre, festivals, local craftshop, beauticians

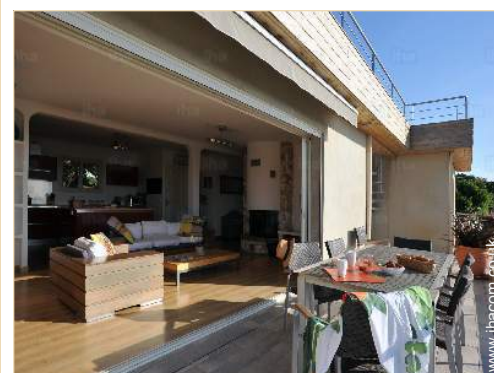
Surroundings

- **Locality :**

Sea/ocean 1.25mi.
Sandy beach 1.25mi.
Rocky beach 1.25mi.
18 hole golf course 15.5mi.
Surfing spots 1.85mi.
Watersports centre 3mi.
Waterfall 9mi.
River 1.85mi.
Forest 1.85mi.
Mountain range 12.5mi.
Marina 1.85mi.
Slipway 1.85mi.
Via ferrata-alpinism 12.5mi.

- **Amenities :**

Village centre 1.85mi.
Town centre 1.85mi.
Ski hire shop 1.85mi.
Scuba diving material hire 1.85mi.
Breadshop 0.62mi.
Local shops 0.62mi.
Supermarket 1.25mi.
Post office 1.5mi.
Bank 1.5mi.
Cash point 1.5mi.
Chemist 1.5mi.
Doctor 1.85mi.
Hospital 1.5mi.



terrace



Seaside



kitchen

Interior

- **Receive up to :**

from 1 to 9 person(s)

- **Liveable floor area :**

2,150 Sq.ft.

- **Interior layout :**

6 Room(s), 6 bedroom(s), 4 bathroom, 4 WC, living room 270 Sq.ft., sitting room 380 Sq. ft., american style kitchen, dining room, dining area, cosy nook, tv room, music room, games room, fitness room, dressing room, study, laundry room

- **Sleeps - bed(s) :**

2 double bed(s), 4 single bed(s)

- **Guest facilities :**

Fireplace, T.V., home cinema, hi-fi system, videoplayer, DVD player, video games, board games, film collection, cable/satelite, internet access, high speed internet access, wifi, cupboard, Hanging wardrobe, safe deposit box, hair dryer, power shower, fully air conditioned, Glazed in area, Curtains, Blinds, Double glazed, electric shutters, remote controlled gates

- **Appliances :**

Crockery/cuttlery, kitchen utensils, electric coffee maker, electric kettle, toaster, juicer, food processor, electric raclette set, meat grill, electric hobs, oven, micro-wave oven, extractor hood, refridgerator, freezer, dish washer, washing machine, clothes dryer, vacuum cleaner, iron, ironing board

Exterior

- **Ground surface :**

0.5 acre

- **Outside accommodation :**

Terrace 2,150 Sq.ft., covered terrace, roof terrace, sundeck

- **Outside setting :**

Enclosed grounds 0.5 acre, garden 1,076 Sq.ft., landscaped garden, lawn 1,076 Sq.ft.

- **Outside amenities :**

Summer kitchen, summer living area, outside bar, BBQ, garden table(s), garden seat(s), parasol, garden seated area, chaise (s) longue(s), sun recliner(s), child's swing, climbing frame, outside shower facilities



kitchen

Services

- **Washing :**

Sheets (1 X / per week), Towels (1 X / per week), Linen (1 X / per week), Blanket(s), Quilt(s), Pillows

- **House :**

Cleaning supplement (+£18*), Cleaning on departure, Garden/swimming pool maintenance, Caretaker/concierge supplement, Parking, Airport transfers supplement (+£178*)

- **Personnel :**

Staff supplement, Chef(s) supplement, Chauffeur supplement, Laundry supplement, Baby sitting supplement

- **Restauration :**

Picnic basket supplement

For your guidance

- **For your guidance**

Children welcome
Pets accepted under certain conditions (ask the owner)
Present on site : pets
Non smoking rental, mobile telephone network coverage
Water : hot/cold
Electricity supply : mains

- **Handicapped people welcome**

Fitted out for the disabled : mobility, visually impaired, hard of hearing, mentally

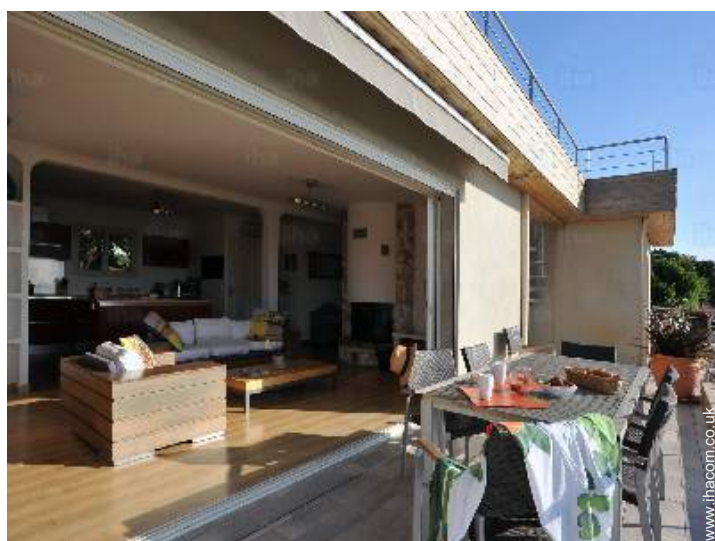


Kitchen Area

Photo album - 1



Seaside



terrace



kitchen



Kitchen Area



kitchen

Photo album - 2



sitting room



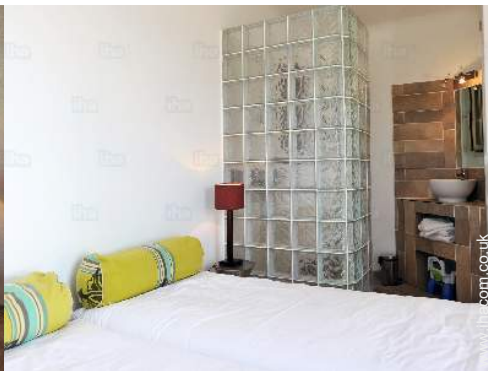
kitchen



suite



suite



bedroom



Leisure facilities



fitness room



fitness room



ping-pong table



fitness room



pétanque pitch

Location



Location & Access

" Easy access to 20 minutes from Figari airport and 5 minutes from the commercial port of Porto Vecchio (Corsica Linea or Corsica Ferries). "



GPS coordinates in degrees, minutes, seconds: Latitude 41°37'37.49"N - Longitude 9°17'51.49"E (Dwelling)

Address

→ La Vetta Trinité
20137 Porto-Vecchio

• Airport Figari Sud Corse

→ Figari, South Corsica, Corsica, France
→ Distance : 9mi.
→ Time : 20'

• Sea port Porto Vecchio

→ Porto-Vecchio, South Corsica, Corsica, France
→ Distance : 1.5mi.
→ Time : 5'

- Bonifacio : (15.5mi.)
- Cala Rossa : (4.5mi.)

- Cappicciolo : (22,5mi.)

Contact

Spoken languages



Luxury holiday letting
 Porto-Vecchio - France
 Luxury Villa

[Book now](#)

Availability calendar - from : february 2019

| Feb | F | Sa | Su | M | Tu | W | Th | F | Sa | Su | M | Tu | W | Th | F | Sa | Su | M | Tu | W | Th | F | Sa | Su | M | Tu | W | Th | |
|------|---|----|----|---|----|---|----|---|----|----|----|----|----|----|----|----|----|----|----|----|----|----|----|----|----|----|----|----|--|
| 2019 | 1 | 2 | 3 | 4 | 5 | 6 | 7 | 8 | 9 | 10 | 11 | 12 | 13 | 14 | 15 | 16 | 17 | 18 | 19 | 20 | 21 | 22 | 23 | 24 | 25 | 26 | 27 | 28 | |
| | | | | | | | | | | | | | | | | | | | | | | | | | | | | | |

| Mar | F | Sa | Su | M | Tu | W | Th | F | Sa | Su | M | Tu | W | Th | F | Sa | Su | M | Tu | W | Th | F | Sa | Su | M | Tu | W | Th | F | Sa | Su |
|------|---|----|----|---|----|---|----|---|----|----|----|----|----|----|----|----|----|----|----|----|----|----|----|----|----|----|----|----|----|----|----|
| 2019 | 1 | 2 | 3 | 4 | 5 | 6 | 7 | 8 | 9 | 10 | 11 | 12 | 13 | 14 | 15 | 16 | 17 | 18 | 19 | 20 | 21 | 22 | 23 | 24 | 25 | 26 | 27 | 28 | 29 | 30 | 31 |
| | - | - | - | - | - | - | - | - | - | - | - | - | - | - | - | - | - | - | - | - | - | - | - | - | - | - | - | - | - | - | - |

| Apr | M | Tu | W | Th | F | Sa | Su | M | Tu | W | Th | F | Sa | Su | M | Tu | W | Th | F | Sa | Su | M | Tu | W | Th | F | Sa | Su | M | Tu |
|------|---|----|---|----|---|----|----|---|----|----|----|----|----|----|----|----|----|----|----|----|----|----|----|----|----|----|----|----|----|----|
| 2019 | 1 | 2 | 3 | 4 | 5 | 6 | 7 | 8 | 9 | 10 | 11 | 12 | 13 | 14 | 15 | 16 | 17 | 18 | 19 | 20 | 21 | 22 | 23 | 24 | 25 | 26 | 27 | 28 | 29 | 30 |
| | - | - | - | - | - | - | - | - | - | - | - | - | - | - | - | - | - | - | - | - | - | - | - | - | - | - | - | - | - | - |

| May | W | Th | F | Sa | Su | M | Tu | W | Th | F | Sa | Su | M | Tu | W | Th | F | Sa | Su | M | Tu | W | Th | F | Sa | Su | M | Tu | W | Th | F |
|------|---|----|---|----|----|---|----|---|----|----|----|----|----|----|----|----|----|----|----|----|----|----|----|----|----|----|----|----|----|----|----|
| 2019 | 1 | 2 | 3 | 4 | 5 | 6 | 7 | 8 | 9 | 10 | 11 | 12 | 13 | 14 | 15 | 16 | 17 | 18 | 19 | 20 | 21 | 22 | 23 | 24 | 25 | 26 | 27 | 28 | 29 | 30 | 31 |
| | - | - | - | - | - | - | - | - | - | - | - | - | - | - | - | - | - | - | - | - | - | - | - | - | - | - | - | - | - | - | - |

| June | Sa | Su | M | Tu | W | Th | F | Sa | Su | M | Tu | W | Th | F | Sa | Su | M | Tu | W | Th | F | Sa | Su | M | Tu | W | Th | F | Sa | Su |
|------|----|----|---|----|---|----|---|----|----|----|----|----|----|----|----|----|----|----|----|----|----|----|----|----|----|----|----|----|----|----|
| 2019 | 1 | 2 | 3 | 4 | 5 | 6 | 7 | 8 | 9 | 10 | 11 | 12 | 13 | 14 | 15 | 16 | 17 | 18 | 19 | 20 | 21 | 22 | 23 | 24 | 25 | 26 | 27 | 28 | 29 | 30 |
| | - | - | - | - | - | - | - | - | - | - | - | - | - | - | - | - | - | - | - | - | - | - | - | - | - | - | - | - | - | - |

| Jul | M | Tu | W | Th | F | Sa | Su | M | Tu | W | Th | F | Sa | Su | M | Tu | W | Th | F | Sa | Su | M | Tu | W | Th | F | Sa | Su | M | Tu | W |
|------|---|----|---|----|---|----|----|---|----|----|----|----|----|----|----|----|----|----|----|----|----|----|----|----|----|----|----|----|----|----|----|
| 2019 | 1 | 2 | 3 | 4 | 5 | 6 | 7 | 8 | 9 | 10 | 11 | 12 | 13 | 14 | 15 | 16 | 17 | 18 | 19 | 20 | 21 | 22 | 23 | 24 | 25 | 26 | 27 | 28 | 29 | 30 | 31 |
| | - | - | - | - | - | - | - | - | - | - | - | - | - | - | - | - | - | - | - | - | - | - | - | - | - | - | - | - | - | - | - |

| Aug | Th | F | Sa | Su | M | Tu | W | Th | F | Sa | Su | M | Tu | W | Th | F | Sa | Su | M | Tu | W | Th | F | Sa | Su | M | Tu | W | Th | F | Sa |
|------|----|---|----|----|---|----|---|----|---|----|----|----|----|----|----|----|----|----|----|----|----|----|----|----|----|----|----|----|----|----|----|
| 2019 | 1 | 2 | 3 | 4 | 5 | 6 | 7 | 8 | 9 | 10 | 11 | 12 | 13 | 14 | 15 | 16 | 17 | 18 | 19 | 20 | 21 | 22 | 23 | 24 | 25 | 26 | 27 | 28 | 29 | 30 | 31 |
| | - | - | - | - | - | - | - | - | - | - | - | - | - | - | - | - | - | - | - | - | - | - | - | - | - | - | - | - | - | - | - |

| Sep | Su | M | Tu | W | Th | F | Sa | Su | M | Tu | W | Th | F | Sa | Su | M | Tu | W | Th | F | Sa | Su | M | Tu | W | Th | F | Sa | Su | M |
|------|----|---|----|---|----|---|----|----|---|----|----|----|----|----|----|----|----|----|----|----|----|----|----|----|----|----|----|----|----|----|
| 2019 | 1 | 2 | 3 | 4 | 5 | 6 | 7 | 8 | 9 | 10 | 11 | 12 | 13 | 14 | 15 | 16 | 17 | 18 | 19 | 20 | 21 | 22 | 23 | 24 | 25 | 26 | 27 | 28 | 29 | 30 |
| | - | - | - | - | - | - | - | - | - | - | - | - | - | - | - | - | - | - | - | - | - | - | - | - | - | - | - | - | - | - |

| Oct | Tu | W | Th | F | Sa | Su | M | Tu | W | Th | F | Sa | Su | M | Tu | W | Th | F | Sa | Su | M | Tu | W | Th | F | Sa | Su | M | Tu | W | Th |
|------|----|---|----|---|----|----|---|----|---|----|----|----|----|----|----|----|----|----|----|----|----|----|----|----|----|----|----|----|----|----|----|
| 2019 | 1 | 2 | 3 | 4 | 5 | 6 | 7 | 8 | 9 | 10 | 11 | 12 | 13 | 14 | 15 | 16 | 17 | 18 | 19 | 20 | 21 | 22 | 23 | 24 | 25 | 26 | 27 | 28 | 29 | 30 | 31 |
| | - | - | - | - | - | - | - | - | - | - | - | - | - | - | - | - | - | - | - | - | - | - | - | - | - | - | - | - | - | - | - |

| Nov | F | Sa | Su | M | Tu | W | Th | F | Sa | Su | M | Tu | W | Th | F | Sa | Su | M | Tu | W | Th | F | Sa | Su | M | Tu | W | Th | F | Sa |
|------|---|----|----|---|----|---|----|---|----|----|----|----|----|----|----|----|----|----|----|----|----|----|----|----|----|----|----|----|----|----|
| 2019 | 1 | 2 | 3 | 4 | 5 | 6 | 7 | 8 | 9 | 10 | 11 | 12 | 13 | 14 | 15 | 16 | 17 | 18 | 19 | 20 | 21 | 22 | 23 | 24 | 25 | 26 | 27 | 28 | 29 | 30 |
| | - | - | - | - | - | - | - | - | - | - | - | - | - | - | - | - | - | - | - | - | - | - | - | - | - | - | - | - | - | - |





Availability calendar - from : november 2019

| Dec | Su | M | Tu | W | Th | F | Sa | Su | M | Tu | W | Th | F | Sa | Su | M | Tu | W | Th | F | Sa | Su | M | Tu | | | | | | | |
|------|----|---|----|---|----|---|----|----|---|----|----|----|----|----|----|----|----|----|----|----|----|----|----|----|----|----|----|----|----|----|----|
| 2019 | 1 | 2 | 3 | 4 | 5 | 6 | 7 | 8 | 9 | 10 | 11 | 12 | 13 | 14 | 15 | 16 | 17 | 18 | 19 | 20 | 21 | 22 | 23 | 24 | 25 | 26 | 27 | 28 | 29 | 30 | 31 |
| - | - | - | - | - | - | - | - | - | - | - | - | - | - | - | - | - | - | - | - | - | - | - | - | - | - | - | - | - | - | - | |

| Jan | W | Th | F | Sa | Su | M | Tu | W | Th | F | Sa | Su | M | Tu | W | Th | F | Sa | Su | M | Tu | W | Th | F | | | | | | | |
|------|---|----|---|----|----|---|----|---|----|----|----|----|----|----|----|----|----|----|----|----|----|----|----|----|----|----|----|----|----|----|----|
| 2020 | 1 | 2 | 3 | 4 | 5 | 6 | 7 | 8 | 9 | 10 | 11 | 12 | 13 | 14 | 15 | 16 | 17 | 18 | 19 | 20 | 21 | 22 | 23 | 24 | 25 | 26 | 27 | 28 | 29 | 30 | 31 |
| - | - | - | - | - | - | - | - | - | - | - | - | - | - | - | - | - | - | - | - | - | - | - | - | - | - | - | - | - | - | - | |

[Month : Next >>](#)

Rental rates - Luxury Villa - from 1 to 9 Person(s)

| Rates | Night | Weekend | week | 2 weeks | Month |
|-------------------------------------------------------------------------------------------------|-------|---------|----------------------|----------------------|-------|
|  Low season | - | - | £2670* (Saturday) | £4450* | - |
|  Mid season | - | - | £3560* (Saturday) | £5785* (Saturday) | - |
|  High season | - | - | £6230* (Saturday) | - | - |

(Check-in day)

[Book now](#)

Booking conditions

• Reservation

- Payment made upon reservation : 30% of rental sum
- Payment balance : on handing over the keys
- Deposit required : £2225*

• rentals

- Service charges included
- Day tax included
- Cleaning charge on departure included

[▶ Book now](#)

[▶ Contact the owner](#)

Contact

Spoken languages



Accepted methods of payment

- Bank transfer (wire)
- Bankers draft
- Cash

Contact directly the property owners

www.ihacom.co.uk

Advert No.

57960

[>> Book now <<](#)

* Converted at the rate indicated : €100 = \$116.85 = £89

Advert No. 57960

www.ihacom.co.uk

