

# Luxury holiday letting Matemwe Luxury Colonial House



Luxury Colonial House, detached, 2 floors in a(an) Private property

Setting : luxurious, tropical

Capacity : from 1 to 10 person(s)

Bedroom(s) : 4

Matemwe - Unguja (Zanzibar)

Zanzibar

Reservation : +255 (0) 777202025 (Tanzania)

Advert No. 57713

www.ihacom.co.uk



>> HOLIDAY LETTINGS

BOOK DIRECT WITH THE OWNERS

## Luxury holiday letting



Luxury Colonial House, detached, 2 floors in a(an) Private property

- **Ideal for large families, all age groups**
- **View :** panoramic, unobscured, sea/ocean, swimming pool
- **Setting :** luxurious, tropical
- **Exposure :** East

## Assets

- **Swimming pool :**  
Private swimming-pool, oval (length 33', width 16'), illuminated, steps in, outside shower (open from '01 january' till '01 january')
- **Parking :**  
Covered parking : 2 carport. Parking uncovered
- **Advantages :**  
Massage table, sunbed, pétanque pitch, 6 pétanque set(s), snorkelling equipment, 4X4 vehicle, motor boat, sailing boat

**Benefits :**  
Direct access to the beach, private beach

## Surroundings & location



Seaside



Fishing

### Leisure

- **Leisure activities less than 20 km / 12 miles :**

Snorkelling, scuba diving, scuba diving (Standard diving dress), windsurfing, sailing, canoeing, boat trips, donkey rides, ATV/Quad Bike, safari, fishing, deep-sea angling, angling, pétanque pitch

- **Supervised :**  
Dive school
- **Attractions and relaxation :**  
Bar/pub, restaurant

### Surroundings

- **Locality :**  
Sea/ocean  
Sandy beach <165'  
Windsurfing spots  
Watersports centre 0.3mi.

- **Amenities :**  
Village centre 660'  
Bus stop / bus station 990'  
Local shops 330'  
Supermarket 31mi.  
Bank 31mi.  
Cash point 31mi.  
Doctor 0.3mi.  
Dispensing clinic 0.3mi.



overall view



the property



terrace

## Interior

- **Receive up to :**

from 1 to 10 person(s) (8 adults, 2 children)

- **Liveable floor area :**

4,300 Sq.ft.

- **Interior layout :**

4 bedroom(s), 3 bathroom, 3 shower room, 1 WC, living room 1,076 Sq.ft., sitting room 750 Sq.ft., large american style kitchen, dining room, dining area, bar area, reading room, dressing room, reception hall, laundry room, veranda, loggia

- **Sleeps - bed(s) :**

4 super king-size bed(s), 3 foldaway bed(s) 1 pers

- **Guest facilities :**

T.V., hi-fi system, DVD player, board games, book collection, cable/satelite, internet access, wifi, wardrobe, cupboard, Hanging wardrobe, safe deposit box, radio alarmclock, hair dryer, mosquito nets, fully air conditioned, ceiling paddle fan, Skylights, Blinds

- **Appliances :**

Crockery/cuttlery, kitchen utensils, cafetiere, electric coffee maker, electric espresso coffee maker, electric kettle, toaster, juicer, food processor, gas cooker, electric cooker, oven, micro-wave oven, electric chip fryer, refridgerator, freezer, ice maker, washing machine, iron, ironing board

## Exterior

- **Ground surface :**

1.25 acre

- **Outside accommodation :**

Terrace 2, 150 Sq.ft., covered terrace 750 Sq.ft., roof terrace 650 Sq.ft., balcony, sundeck, pergola, lanai

- **Outside setting :**

Private courtyard, enclosed grounds, landscaped garden, tropical garden, lawn, palm grove

- **Outside amenities :**

Outside bar, BBQ, parasol, garden seated area, 12 chaise(s) longue(s), sun lounge



view from the veranda

## Services

- **Washing :**

Sheets (2 X / per week), Towels (2 X / per week), Linen (2 X / per week), Beach towels (2 X / per week), Pillows

- **Personnel :**

Staff, Chef(s) supplement (+£13\*), Chauffeur supplement (+£13\*), Laundry, Massage supplement (+£18\*)

## For your guidance

- **For your guidance**

Children welcome

No pet allowed

Mobile telephone network coverage, personal transport advisable

Water : hot/cold, water not drinkable

Local voltage supply : 220-240V / 50Hz

Electricity supply : mains and back-up generator

- **Handicapped people welcome**

Wheelchair access



View from the property



Photo album - 1



the property



overall view



terrace



View from the property



view from the veranda



Photo album - 2



direct access to the beach



motor boat



direct access to the beach



sea view



chef(s)



Assets



Photo album - 3



Assets



view from the covered terrace



deep-sea angling



large bedroom



pool view

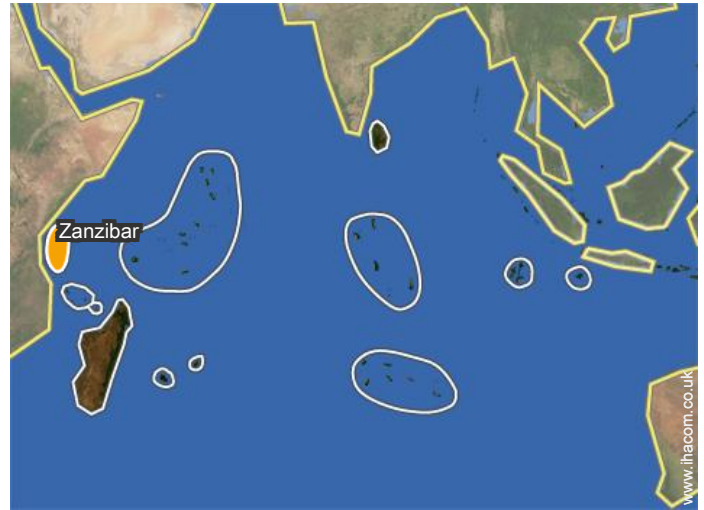


pool view



large bedroom

Location



Location & Access



GPS coordinates in degrees, minutes, seconds: Latitude 5°52'24"S - Longitude 39° 21'12"E (Dwelling)

• Airport Zanzibar

- Zanzibar City, Unguja (Zanzibar), Zanzibar
- Distance : 34mi.
- Time : 50'

• Matemwe : (65')

Contact

Spoken languages



Luxury holiday letting  
Unguja (Zanzibar) - Zanzibar  
Luxury Colonial House

[Book now](#)

Availability calendar - from : february 2018

Feb	Th	F	Sa	Su	M	Tu	W	Th	F	Sa	Su	M	Tu	W	Th	F	Sa	Su	M	Tu	W	Th	F	Sa	Su	M	Tu	W
2018	1	2	3	4	5	6	7	8	9	10	11	12	13	14	15	16	17	18	19	20	21	22	23	24	25	26	27	28

Mar	Th	F	Sa	Su	M	Tu	W	Th	F	Sa	Su	M	Tu	W	Th	F	Sa	Su	M	Tu	W	Th	F	Sa	Su	M	Tu	W	Th	F	Sa
2018	1	2	3	4	5	6	7	8	9	10	11	12	13	14	15	16	17	18	19	20	21	22	23	24	25	26	27	28	29	30	31
	-	-	-	-	-	-	-	-	-	-	-	-	-	-	-	-	-	-	-	-	-	-	-	-	-	-	-	-	-	-	

Apr	Su	M	Tu	W	Th	F	Sa	Su	M	Tu	W	Th	F	Sa	Su	M	Tu	W	Th	F	Sa	Su	M	Tu	W	Th	F	Sa	Su	M
2018	1	2	3	4	5	6	7	8	9	10	11	12	13	14	15	16	17	18	19	20	21	22	23	24	25	26	27	28	29	30
	-	-	-	-	-	-	-	-	-	-	-	-	-	-	-	-	-	-	-	-	-	-	-	-	-	-	-	-	-	

May	Tu	W	Th	F	Sa	Su	M	Tu	W	Th	F	Sa	Su	M	Tu	W	Th	F	Sa	Su	M	Tu	W	Th	F	Sa	Su	M	Tu	W	Th
2018	1	2	3	4	5	6	7	8	9	10	11	12	13	14	15	16	17	18	19	20	21	22	23	24	25	26	27	28	29	30	31
	-	-	-	-	-	-	-	-	-	-	-	-	-	-	-	-	-	-	-	-	-	-	-	-	-	-	-	-	-	-	

June	F	Sa	Su	M	Tu	W	Th	F	Sa	Su	M	Tu	W	Th	F	Sa	Su	M	Tu	W	Th	F	Sa							
2018	1	2	3	4	5	6	7	8	9	10	11	12	13	14	15	16	17	18	19	20	21	22	23	24	25	26	27	28	29	30
	-	-	-	-	-	-	-	-	-	-	-	-	-	-	-	-	-	-	-	-	-	-	-	-	-	-	-	-	-	

Jul	Su	M	Tu	W	Th	F	Sa	Su	M	Tu	W	Th	F	Sa	Su	M	Tu	W	Th	F	Sa	Su	M	Tu	W	Th	F	Sa	Su	M	Tu
2018	1	2	3	4	5	6	7	8	9	10	11	12	13	14	15	16	17	18	19	20	21	22	23	24	25	26	27	28	29	30	31
	-	-	-	-	-	-	-	-	-	-	-	-	-	-	-	-	-	-	-	-	-	-	-	-	-	-	-	-	-	-	

Aug	W	Th	F	Sa	Su	M	Tu	W	Th	F	Sa	Su	M	Tu	W	Th	F	Sa	Su	M	Tu	W	Th	F	Sa	Su	M	Tu	W	Th	F
2018	1	2	3	4	5	6	7	8	9	10	11	12	13	14	15	16	17	18	19	20	21	22	23	24	25	26	27	28	29	30	31
	-	-	-	-	-	-	-	-	-	-	-	-	-	-	-	-	-	-	-	-	-	-	-	-	-	-	-	-	-	-	

Sep	Sa	Su	M	Tu	W	Th	F	Sa	Su	M	Tu	W	Th	F	Sa	Su	M	Tu	W	Th	F	Sa	Su							
2018	1	2	3	4	5	6	7	8	9	10	11	12	13	14	15	16	17	18	19	20	21	22	23	24	25	26	27	28	29	30
	-	-	-	-	-	-	-	-	-	-	-	-	-	-	-	-	-	-	-	-	-	-	-	-	-	-	-	-	-	

Oct	M	Tu	W	Th	F	Sa	Su	M	Tu	W	Th	F	Sa	Su	M	Tu	W	Th	F	Sa	Su	M	Tu	W							
2018	1	2	3	4	5	6	7	8	9	10	11	12	13	14	15	16	17	18	19	20	21	22	23	24	25	26	27	28	29	30	31
	-	-	-	-	-	-	-	-	-	-	-	-	-	-	-	-	-	-	-	-	-	-	-	-	-	-	-	-	-		

Nov	Th	F	Sa	Su	M	Tu	W	Th	F	Sa	Su	M	Tu	W	Th	F	Sa	Su	M	Tu	W	Th	F							
2018	1	2	3	4	5	6	7	8	9	10	11	12	13	14	15	16	17	18	19	20	21	22	23	24	25	26	27	28	29	30
	-	-	-	-	-	-	-	-	-	-	-	-	-	-	-	-	-	-	-	-	-	-	-	-	-	-	-	-	-	

 Reserved





Availability calendar - from : november 2018




Dec	Sa	Su	M	Tu	W	Th	F	Sa	Su	M	Tu	W	Th	F	Sa	Su	M	Tu	W	Th	F	Sa	Su	M							
2018	1	2	3	4	5	6	7	8	9	10	11	12	13	14	15	16	17	18	19	20	21	22	23	24	25	26	27	28	29	30	31
-	-	-	-	-	-	-	-	-	-	-	-	-	-	-	-	-	-	-	-	-	-	-	-	-	-	-	-	-	-	-	

Jan	Tu	W	Th	F	Sa	Su	M	Tu	W	Th	F	Sa	Su	M	Tu	W	Th	F	Sa	Su	M	Tu	W	Th							
2019	1	2	3	4	5	6	7	8	9	10	11	12	13	14	15	16	17	18	19	20	21	22	23	24	25	26	27	28	29	30	31
-	-	-	-	-	-	-	-	-	-	-	-	-	-	-	-	-	-	-	-	-	-	-	-	-	-	-	-	-	-	-	

Reserved

[Month : Next >>](#)

Rental rates - Luxury Colonial House - from 1 to 10 Person(s)

Rates	Night	Weekend	week	2 weeks	Month
 Low season	£445* > 3	-	£3113*	£5448*	-
 High season	£534* > 5	-	£3735*	£6537*	-
 Festive specials	£889* > 7	-	£6226*	£12452*	-

> Minimum Night

[Book now](#)

Booking conditions

• Reservation

→ Payment made upon reservation :  
25% of rental sum  
→ Payment balance :  
on handing over the keys

• rentals

→ Service charges included  
→ Day tax included  
→ Cleaning charge on departure included  
→ Anticipated supplement for :  
- firewood

[▶ Book now](#)

[▶ Contact the owner](#)

Accepted methods of payment

• Bank transfer (wire) • Cash

Contact directly the property owners

[www.ihacom.co.uk](http://www.ihacom.co.uk)

Advert No.

57713

[>> Book now <<](#)

Contact

Spoken languages



\* Converted at the rate indicated : €100 = \$123.46 = £88.94

Advert No. 57713

[www.ihacom.co.uk](http://www.ihacom.co.uk)

