

# Luxury holiday letting Estoril's Coast "ERICEIRA VILA - (11201 / AL)"

The Villa comprises : 4 bedrooms, 5 rooms, 5 bathrooms, 2 terraces, fully equipped kitchen, Barbecue, private pool, with 9 m long and 4.5 m wide, private games room. Living room and dining room.



**Luxury House**, detached, 4 floors, separate entrance, in a(an) Private property

Setting : waterfront, peaceful

Capacity : from 2 to 6 person(s)

Bedroom(s) : 4

Room(s) : 7



Case & Appartamenti per vacanze  
Family Holiday Destinations ( )

Ericeira - District of Lisbon - Lisbon and Tagus Valley  
Portugal

Advert No. 15218

www.ihacom.co.uk



>> HOLIDAY LETTINGS

BOOK DIRECT WITH THE OWNERS



Luxury holiday letting  
District of Lisbon - Lisbon and Tagus Valley  
"ERICEIRA VILA - (11201 / AL)"

2

[Book now](#)

Luxury holiday letting



Luxury House, detached, 4 floors, separate entrance, in a(an) Private property

• **Ideal for all age groups, large families**

- **View :** panoramic, unobscured, not overlooked, sea/ocean, swimming pool, fantastic sunset
- **Setting :** waterfront, peaceful
- **Exposure :** South

" The Villa comprises : 4 bedrooms, 5 rooms, 5 bathrooms, 2 terraces, kitchen, Barbecue, private pool, private games room. Large fully equipped kitchen. Living room and dining room. Private pool with 9 m long and 4.5 m wide. Shallow part is 0,50 cm, deepest part is 2 m. The pool has a terrace with a dining table, (when eating you will have landscape of the ocean in your front). Barbecue with oven, counter top and sink. Large terrace on the top floor, with a splendid ocean view. A beautiful view of the sea front, up to Cabo da Roca (the westernmost point of Europe). Located about 15 minutes walk (or 5) of the Centre of the town of Ericeira, with market fresh fish stalls, supermarkets, cafes, bars, restaurants, disco, etc. Residence ideally located in a quiet and peaceful place. Very spacious, with all possible comfort and careful decoration. With a spectacular view over the sea, and views of the sunset, every day different, unique. Ideally situated for visits to Lisbon, Sintra, Cascais, Mafra, Óbidos, Alcobaça, Fátima sanctuary. Barbecue/Grill. 2 large terraces with a splendid view of the sea. "

Assets

• **Swimming pool :**

Private swimming-pool, rectangular (length 30', width 15'), illuminated, steps in, outside shower (open from '01 january' till '31 december')

• **Tennis :**

Private tennis

• **Parking :**

Parking uncovered : 1 internal, 2 reserved bay.

• **Advantages :**

Billiard table, table football, ping-pong table, 4 ping-pong bats, mini-golf, courtesy car, 4X4 vehicle, motor boat, rowing boat, sailing boat

• **baby equipment :**

Baby chair, baby bath

**Benefits :**

Direct access to the beach, marina mooring space, driving range

Surroundings & location



Seaside



Fishing



Festival



Culture

" Ericeira offers a perfect environment to relax and enjoy the healthy air, the beauty of the beaches of Ericeira and its landscape, excellent food served in restaurants, or the many terraces that populate the town of Ericeira, making it a pleasant place. With clean water, and rich in mineral salts, the iodized beaches of Ericeira are of excellent quality. Such as the fishermen's Beach, Praia do Sul, Praia da Foz do Lizandro, Praia de S. Lourenço, Praia de S. Sebastião or da Ribeira, worldwide recognized as ideal for surfing, BODYBOARDING and SKIMMING, KYTE-SURF, windsurfing, and SURFING with REMO. Ericeira is regarded as the first SURF world Reserve of Europe and considered the best area in Europe for the practice of SURF. 12 beaches have been considered to practice surf in Ericeira: Ribeira, Praia dos Lame, Crazy left, São Lourenço, Reef, Backdoor, white rock, Slaughterhouse, Algodio, Furnas, South Beach, Foz do Lizandro. In the surroundings you can visit various locations: Mafra: Visit an ancient traditional Portuguese village with small houses. Try the bread of Mafra produced and sold on the site. Visit the National Palace of Mafra, Monastery built by the King of Portugal as a promise to the Monks-referred to in the book by the writer José Saramago. SINTRA: 30 km: Visit: Pena Palace; Moorish Castle. "

Leisure

• **Leisure activities less than 20 km / 12 miles :**

Snowboarding, bathing, pedalo, snorkelling, scuba diving, water skiing, jet ski, surfing, windsurfing, sailing, kite surfing, canoeing, golf, tennis, riding school, pathway, parascending, parachuting, hang-gliding, paragliding, boat trips, horse trekking, donkey rides, mini-golf, skate board (ramps),

ATV/Quad Bike, fishing, deep-sea angling, angling, spear fishing

• **Supervised :**

Ski school, sailing school, tennis school, riding school

• **Attractions and relaxation :**

Bar/pub, discotheque, restaurant, cinema, open air summer cinema, karaoke, park and garden, leisure park, zoo/animal park, art gallery, historical site, museum, festivals, antiques & bric-a-brac, local craftshop, natural spring baths, thermal baths, sauna, health farm, beauticians, fitness centre

Surroundings

• **Locality :**

Sea/ocean  
Sandy beach  
Shingle beach  
Rocky beach  
Creek  
Public swimming pool  
Public tennis court  
9 hole golf course  
18 hole golf course  
Windsurfing spots  
Surfing spots  
Watersports centre  
River  
Stretch of water  
Marina

• **Amenities :**

Nursery  
Village centre 0.93mi.  
Town centre 0.93mi.  
Bus stop / bus station 0.93mi.  
Bus pick up point beach 0.93mi.  
Bike/mountain bike hire 1.25mi.  
Scooter/motorbike hire 0.93mi.  
Car rental 1.5mi.  
Boat rental 1.5mi.  
Scuba diving material hire  
Breadshop  
Caterer 0.93mi.  
Local shops 1.25mi.  
Supermarket 1.25mi.  
High class retailers 1.5mi.  
Hairdressing salon 1.5mi.  
Internet cafe 0.5mi.  
Post office 1.5mi.  
Bank 1.25mi.  
Cash point 0.62mi.  
Chemist 1.25mi.  
Doctor  
Nurse  
Hospital  
Dispensing clinic

Advert No. 15218

www.ihacom.co.uk



>> HOLIDAY LETTINGS

BOOK DIRECT WITH THE OWNERS



the house

### Exterior

- **Ground surface :**  
1,600 Sq.ft.
- **Outside accommodation :**  
Terrace 530 Sq.ft., covered terrace 215 Sq.ft., balcony 130 Sq.ft., sundeck, gazebo
- **Outside setting :**  
Private courtyard 970 Sq.ft., enclosed grounds 1,076 Sq.ft., garden 160 Sq.ft.
- **Outside amenities :**  
Pizza oven, BBQ, parasol, 8 chaise(s) longue(s), 6 sun recliner(s), outside shower facilities



the house

### Interior

- **Receive up to :**  
from 2 to 6 person(s) (6 adults)
- **Liveable floor area :**  
2,370 Sq.ft
- **Interior layout :**  
7 Room(s), 4 bedroom(s), 5 bathroom, 4 shower room, 5 WC, living room 430 Sq.ft., sitting room 430 Sq.ft., separate kitchen, dining room, cosy nook, tv room, games room, patio, veranda
- **Sleeps - bed(s) :**  
3 double bed(s), 1 king-size bed(s), 2 single bed(s), 1 sofa bed(s) 1 pers, 2 baby cot(s)
- **Guest facilities :**  
Fireplace, T.V., hi-fi system, videoplayer, DVD player, video games, board games, book collection, film collection, cable/satellite, internet access, high speed internet access, wifi, wardrobe, cupboard, hair dryer, central heating, electric heating, Curtains, Blinds, Double glazed, Rolling shutters, entry phone system, burgular alarm, fire alarm
- **Appliances :**  
Crockery/cuttlery, kitchen utensils, cafetiere, electric coffee maker, electric espresso coffee maker, electric kettle, toaster, juicer, food processor, meat grill, gas cooker, electric cooker, electric hobs, oven, mini-oven, micro-wave oven, extractor hood, refridgerator, freezer, dish washer, washing machine, clothes dryer, vacuum cleaner, iron, ironing board

### Services

- **Washing :**  
Sheets (1 X / per week), Towels (1 X / per week), Linen (1 X / per week), Beach towels supplement, Blanket(s) (1 X / per week), Quilt (s) (1 X / per week), Pillows (1 X / per week)
- **House :**  
Garden/swimming pool maintenance supplement, Parking, Airport transfers supplement
- **Personnel :**  
Staff supplement, Chef(s) supplement, Chauffeur supplement, Guide supplement
- **Restauration :**  
BBQ meal supplement, Half board supplement, Full board supplement, Locally produced meals supplement

### For your guidance

- **For your guidance**  
Children welcome  
No pet allowed  
Non smoking rental, mobile telephone network coverage, personal transport advisable  
Water : hot/cold  
Local voltage supply : 110-120V / 60Hz  
Electricity supply : mains



the house



Photo album - 1



the house



the house



the house



the house



the house



the house



Photo album - 2



the house



the house



the house



the house



the house



the house



the house



the house



the house



the house



the house



Photo album - 3



the house



the house



the house



the house



the house



the house



the house



Seaside



Seaside



aerial view



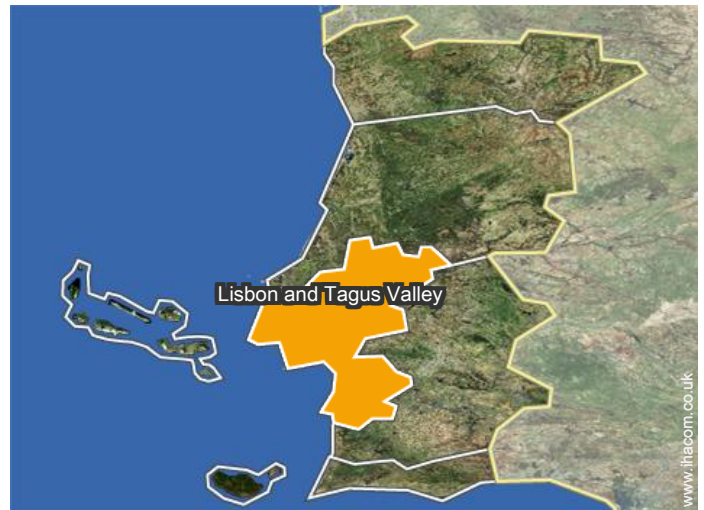
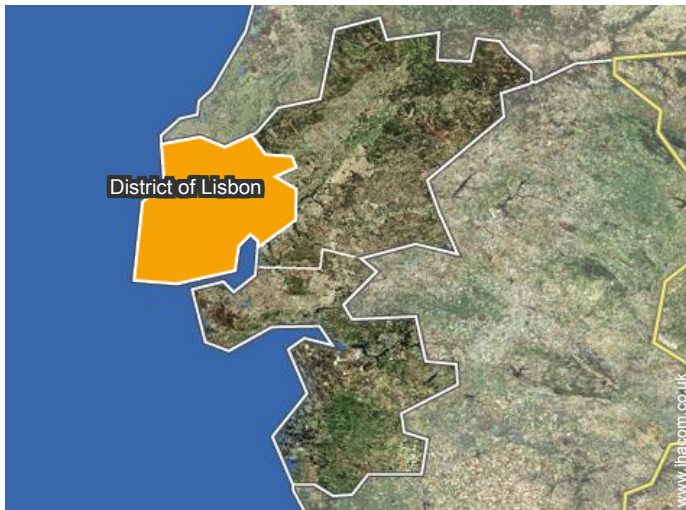
panorama



View



### Location



### Location & Access

" Located in a quiet neighbourhood, in the beautiful village of Ericeira, it is a 30-minute drive from Lisbon Airport; 5 minutes from the beautiful beaches of Ericeira; near the town and near the beach, and ideally situated for visits to Peniche, Lisbon, Sintra, Cascais, Mafra, Óbidos, Alcobaca, Fátima sanctuary. "



GPS coordinates in degrees, minutes, seconds: Latitude 38°59'1"N - Longitude 9° 24'55"W ([Dwelling](#))

#### Address

→ Rua Guiomar Carvalho Miranda, lote 90  
2655 Ericeira

#### • Airport Lisbon Portela

→ Lisbon, District of Lisbon, Lisbon and Tagus Valley, Portugal  
→ Distance : 28mi.  
→ Time : 40'

#### • Motorway (junction) A-21

→ Ericeira, District of Lisbon, Lisbon and Tagus Valley, Portugal  
→ Distance : 1.5mi.  
→ Time : 5'

- Mafra : (6mi.)
- Sintra : (15.5mi.)
- Lisbon : (28mi.)

### Contact

Spoken languages



Luxury holiday letting  
Estoril's Coast - Portugal  
"ERICEIRA VILA - (11201 / AL)"

[Book now](#)

Availability calendar - from : june 2019

June	Sa	Su	M	Tu	W	Th	F	Sa	Su	M	Tu	W	Th	F	Sa	Su	M	Tu	W	Th	F	Sa	Su	M	Tu	W	Th	F	Sa	Su
2019	1	2	3	4	5	6	7	8	9	10	11	12	13	14	15	16	17	18	19	20	21	22	23	24	25	26	27	28	29	30
															-	-	-	-	-	-	-	-	-	-	-	-	-	-	-	-

Jul	M	Tu	W	Th	F	Sa	Su	M	Tu	W	Th	F	Sa	Su	M	Tu	W	Th	F	Sa	Su	M	Tu	W	Th	F	Sa	Su	M	Tu	W
2019	1	2	3	4	5	6	7	8	9	10	11	12	13	14	15	16	17	18	19	20	21	22	23	24	25	26	27	28	29	30	31
	-	-	-	-	-	-	-	-	-	-	-	-	-	-	-	-	-	-	-	-	-	-	-	-	-	-	-	-	-	-	-

Aug	Th	F	Sa	Su	M	Tu	W	Th	F	Sa	Su	M	Tu	W	Th	F	Sa	Su	M	Tu	W	Th	F	Sa	Su	M	Tu	W	Th	F	Sa
2019	1	2	3	4	5	6	7	8	9	10	11	12	13	14	15	16	17	18	19	20	21	22	23	24	25	26	27	28	29	30	31
	-	-	-	-	-	-	-	-	-	-	-	-	-	-	-	-	-	-	-	-	-	-	-	-	-	-	-	-	-	-	-

Sep	Su	M	Tu	W	Th	F	Sa	Su	M	Tu	W	Th	F	Sa	Su	M	Tu	W	Th	F	Sa	Su	M	Tu	W	Th	F	Sa	Su	M
2019	1	2	3	4	5	6	7	8	9	10	11	12	13	14	15	16	17	18	19	20	21	22	23	24	25	26	27	28	29	30
	-	-	-	-	-	-	-	-	-	-	-	-	-	-	-	-	-	-	-	-	-	-	-	-	-	-	-	-	-	-

Oct	Tu	W	Th	F	Sa	Su	M	Tu	W	Th	F	Sa	Su	M	Tu	W	Th	F	Sa	Su	M	Tu	W	Th	F	Sa	Su	M	Tu	W	Th
2019	1	2	3	4	5	6	7	8	9	10	11	12	13	14	15	16	17	18	19	20	21	22	23	24	25	26	27	28	29	30	31
	-	-	-	-	-	-	-	-	-	-	-	-	-	-	-	-	-	-	-	-	-	-	-	-	-	-	-	-	-	-	-

Nov	F	Sa	Su	M	Tu	W	Th	F	Sa	Su	M	Tu	W	Th	F	Sa	Su	M	Tu	W	Th	F	Sa	Su	M	Tu	W	Th	F	Sa
2019	1	2	3	4	5	6	7	8	9	10	11	12	13	14	15	16	17	18	19	20	21	22	23	24	25	26	27	28	29	30
	-	-	-	-	-	-	-	-	-	-	-	-	-	-	-	-	-	-	-	-	-	-	-	-	-	-	-	-	-	-

Dec	Su	M	Tu	W	Th	F	Sa	Su	M	Tu	W	Th	F	Sa	Su	M	Tu	W	Th	F	Sa	Su	M	Tu	W	Th	F	Sa	Su	M	Tu
2019	1	2	3	4	5	6	7	8	9	10	11	12	13	14	15	16	17	18	19	20	21	22	23	24	25	26	27	28	29	30	31
	-	-	-	-	-	-	-	-	-	-	-	-	-	-	-	-	-	-	-	-	-	-	-	-	-	-	-	-	-	-	-

Jan	W	Th	F	Sa	Su	M	Tu	W	Th	F	Sa	Su	M	Tu	W	Th	F	Sa	Su	M	Tu	W	Th	F	Sa	Su	M	Tu	W	Th	F
2020	1	2	3	4	5	6	7	8	9	10	11	12	13	14	15	16	17	18	19	20	21	22	23	24	25	26	27	28	29	30	31
	-	-	-	-	-	-	-	-	-	-	-	-	-	-	-	-	-	-	-	-	-	-	-	-	-	-	-	-	-	-	-

Feb	Sa	Su	M	Tu	W	Th	F	Sa	Su	M	Tu	W	Th	F	Sa	Su	M	Tu	W	Th	F	Sa							
2020	1	2	3	4	5	6	7	8	9	10	11	12	13	14	15	16	17	18	19	20	21	22	23	24	25	26	27	28	29
	-	-	-	-	-	-	-	-	-	-	-	-	-	-	-	-	-	-	-	-	-	-	-	-	-	-	-	-	-

Mar	Su	M	Tu	W	Th	F	Sa	Su	M	Tu	W	Th	F	Sa	Su	M	Tu	W	Th	F	Sa	Su	M	Tu	W	Th	F	Sa	Su	M	Tu
2020	1	2	3	4	5	6	7	8	9	10	11	12	13	14	15	16	17	18	19	20	21	22	23	24	25	26	27	28	29	30	31
	-	-	-	-	-	-	-	-	-	-	-	-	-	-	-	-	-	-	-	-	-	-	-	-	-	-	-	-	-	-	-

 Reserved





Luxury holiday letting  
 District of Lisbon - Lisbon and Tagus Valley  
**"ERICEIRA VILA - (11201 / AL)"**

9

[Book now](#)

Availability calendar - from : march 2020




Apr	W	Th	F	Sa	Su	M	Tu	W	Th	F	Sa	Su	M	Tu	W	Th	F	Sa	Su	M	Tu	W	Th	F	Sa	Su	M	Tu	W	Th
2020	1	2	3	4	5	6	7	8	9	10	11	12	13	14	15	16	17	18	19	20	21	22	23	24	25	26	27	28	29	30
-	-	-	-	-	-	-	-	-	-	-	-	-	-	-	-	-	-	-	-	-	-	-	-	-	-	-	-	-	-	-

May	F	Sa	Su	M	Tu	W	Th	F	Sa	Su	M	Tu	W	Th	F	Sa	Su	M	Tu	W	Th	F	Sa	Su							
2020	1	2	3	4	5	6	7	8	9	10	11	12	13	14	15	16	17	18	19	20	21	22	23	24	25	26	27	28	29	30	31
-	-	-	-	-	-	-	-	-	-	-	-	-	-	-	-	-	-	-	-	-	-	-	-	-	-	-	-	-	-	-	

Reserved

[Month : Next >>](#)

Rental rates - Luxury House - from 2 to 6 Person(s)

Rates	Night	Weekend	week	2 weeks	Month
 Low season	-	-	£712* (Saturday)	£1424* (Saturday)	£2848* (Saturday)
 Mid season	-	-	£846* (Saturday)	£1691* (Saturday)	£3382* (Saturday)
 High season	-	-	£1202* (Saturday)	£2403* (Sunday)	£4806* (Saturday)

(Check-in day)

[Book now](#)

Booking conditions

- **Reservation**
  - Payment made upon reservation : 25% of rental sum
  - Payment balance : on handing over the keys
  - Deposit required : £223\*
- **rentals**
  - Service charges included
  - Day tax included
  - Cleaning charge levy on departure : £80\*

[▶ Book now](#)

[▶ Contact the owner](#)

Contact

Spoken languages



Accepted methods of payment

- Bank transfer (wire) • Cash

Contact directly the property owners

[www.ihacom.co.uk](http://www.ihacom.co.uk)  
**Advert No.**  
**15218**  
 >> [Book now](#) <<

\* Converted at the rate indicated : €100 = \$116.85 = £89

Advert No. 15218

[www.ihacom.co.uk](http://www.ihacom.co.uk)

