

Luxury holiday letting Camperduin "Duinblick"



Luxury House, detached, 1 floor, separate entrance, in a(an) Private property

Setting : bucolic, tranquil

Capacity : from 1 to 5 person(s)

Bedroom(s) : 2

Room(s) : 1

Camperduin - North Holland

Netherlands

Reservation : +31 (0) 645718685 (Netherlands)

Advert No. 44038

www.ihacom.co.uk



>> HOLIDAY LETTINGS

BOOK DIRECT WITH THE OWNERS

Luxury holiday letting



Luxury House, detached, 1 floor, separate entrance, in a(an) Private property

- **Ideal for all age groups, couples with baby**
- **View :** not overlooked, sea/ocean, farmland, fantastic sunset
- **Setting :** bucolic, tranquil
- **Exposure :** West

Assets

- **Parking :**
Parking uncovered
- **Advantages :**
Sauna, massage table, piano
- **baby equipment :**
Baby chair, baby changer



master bedroom

Surroundings & location



Seaside

Leisure

- **Leisure activities less than 20 km / 12 miles :**

Bathing, surfing, windsurfing, kite surfing, golf, tennis, riding school, pathway, coastal/forest paths, hiking, kite flying, horse trekking, mini-golf, angling

- **Supervised :**

Riding school

- **Attractions and relaxation :**

Bar/pub, discotheque, restaurant, cinema, park and garden, leisure park, nature reserve, exhibition centre, museum, theatre, antiques & bric-a-brac, sauna, steam baths, health farm, fitness centre

Surroundings

- **Locality :**

Heated swimming pool 6mi.
Sea/ocean 0.3mi.
Sandy beach 0.3mi.
Nudist beach 1.5mi.
9 hole golf course
18 hole golf course 9mi.
Forest 990'
Marina 0.93mi.

- **Amenities :**

Village centre 1.25mi.
Town centre 12.5mi.
Bus stop / bus station 660'
Bus pick up point beach 660'
Bike/mountain bike hire 1.5mi.
Car rental 9mi.
Breadshop 1.25mi.
Local shops 1.25mi.
Supermarket 1.5mi.
High class retailers 6mi.
Hairdressing salon 1.85mi.
Post office 6mi.
Bank 2.5mi.
Cash point 1.5mi.
Chemist 2.5mi.
Doctor 1.25mi.
Hospital 9mi.
Dispensing clinic 9mi.



american style kitchen



Interior

- **Receive up to :**
from 1 to 5 person(s) (4 adults, 1 children)
- **Liveable floor area :**
1,600 Sq.ft.
- **Interior layout :**
1 Room(s), 2 bedroom(s), 1 bathroom, 2 WC, living room 530 Sq.ft., american style kitchen, cosy nook, laundry room
- **Sleeps - bed(s) :**
1 four poster bed(s), 2 single bed(s), 1 folding bed(s) 1 pers
- **Guest facilities :**
T.V., home cinema, hi-fi system, videoplayer, DVD player, board games, book collection, t.v points, internet access, high speed internet access, wardrobe, cupboard, radio alarmclock, hair dryer, power shower, fly screens, central heating, wood-burning stove, Skylights, Curtains, Double glazed
- **Appliances :**
Crockery/cuttlery, kitchen utensils, cafetiere, electric coffee maker, electric espresso coffee maker, electric kettle, toaster, juicer, food processor, electric raclette set, electric hobs, oven, micro-wave oven, extractor hood, refridgerator, freezer, dish washer, washing machine, clothes dryer, vacuum cleaner, iron, ironing board

Exterior

- **Ground surface :**
8,600 Sq.ft.
- **Outside accommodation :**
Terrace 270 Sq.ft.
- **Outside setting :**
Enclosed grounds, garden, lawn, natural pools
- **Outside amenities :**
BBQ, garden table(s), garden seat(s), parasol, 2 chaise(s) longue(s), sand pit



large bedroom

Services

- **Washing :**
Sheets supplement, Towels supplement, Linen supplement, Beach towels supplement, Quilt(s), Pillows
- **House :**
Cleaning on departure supplement (+£54*), Parking
- **Personnel :**
Massage supplement

For your guidance

- **For your guidance**
Children welcome
Present on site : pets
Non smoking rental, mobile telephone network coverage
Water : hot/cold
Local voltage supply : 220-240V / 50Hz
Electricity supply : mains
- **Handicapped people welcome**
Fitted out for the disabled : visually impaired, hard of hearing



large bedroom

Photo album - 1



master bedroom



american style kitchen



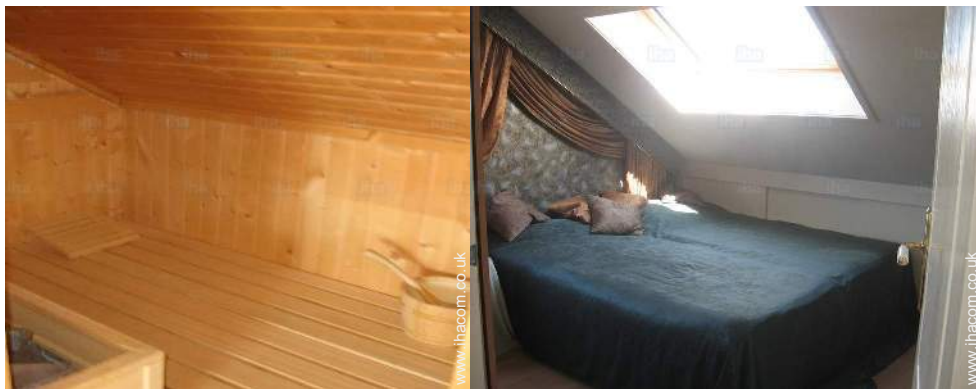
large bedroom

Photo album - 2



large bedroom

sauna



sauna

small bedroom



small bedroom

bathroom



bathroom

bathroom

Photo album - 3



garden/park view



northerly view



north-easterly view



easterly view



sea/ocean



sea/ocean



sea/ocean



Surroundings

Location



Location & Access



GPS coordinates in degrees, minutes, seconds: Latitude 52°43'35"N - Longitude 4°38'59"E ([Dwelling](#))

Address

→ Munnikenweg 23
Bergen Camperduin
1871 Camperduin

• Motorway (junction) A9

→ Alkmaar, North Holland, Netherlands
→ Distance : 11,2mi.
→ Time : 20'

• Motorway (junction) N9

→ Schoorldam, North Holland, Netherlands
→ Distance : 2.5mi.
→ Time : 10'

- Alkmaar : (10mi.)
- Bergen (North Holland) : (6mi.)
- Schagen : (11,2mi.)

Contact

Spoken languages



Luxury holiday letting North Holland - Netherlands "Duinblick"

[Book now](#)

Availability calendar - from : december 2017

| Dec | F | Sa | Su | M | Tu | W | Th | F | Sa | Su | M | Tu | W | Th | F | Sa | Su | M | Tu | W | Th | F | Sa | Su | | | | | | | |
|------|---|----|----|---|----|---|----|---|----|----|----|----|----|----|----|----|----|----|----|----|----|----|----|----|----|----|----|----|----|----|----|
| 2017 | 1 | 2 | 3 | 4 | 5 | 6 | 7 | 8 | 9 | 10 | 11 | 12 | 13 | 14 | 15 | 16 | 17 | 18 | 19 | 20 | 21 | 22 | 23 | 24 | 25 | 26 | 27 | 28 | 29 | 30 | 31 |
| | | | | | | | | | | | | | | | - | - | - | - | - | - | - | - | - | - | - | - | - | - | - | | |

| Jan | M | Tu | W | Th | F | Sa | Su | M | Tu | W | Th | F | Sa | Su | M | Tu | W | Th | F | Sa | Su | M | Tu | W | | | | | | | |
|------|---|----|---|----|---|----|----|---|----|----|----|----|----|----|----|----|----|----|----|----|----|----|----|----|----|----|----|----|----|----|----|
| 2018 | 1 | 2 | 3 | 4 | 5 | 6 | 7 | 8 | 9 | 10 | 11 | 12 | 13 | 14 | 15 | 16 | 17 | 18 | 19 | 20 | 21 | 22 | 23 | 24 | 25 | 26 | 27 | 28 | 29 | 30 | 31 |
| | - | - | - | - | - | - | - | - | - | - | - | - | - | - | - | - | - | - | - | - | - | - | - | - | - | - | - | - | - | - | |

| Feb | Th | F | Sa | Su | M | Tu | W | Th | F | Sa | Su | M | Tu | W | Th | F | Sa | Su | M | Tu | W | | | | | | | |
|------|----|---|----|----|---|----|---|----|---|----|----|----|----|----|----|----|----|----|----|----|----|----|----|----|----|----|----|----|
| 2018 | 1 | 2 | 3 | 4 | 5 | 6 | 7 | 8 | 9 | 10 | 11 | 12 | 13 | 14 | 15 | 16 | 17 | 18 | 19 | 20 | 21 | 22 | 23 | 24 | 25 | 26 | 27 | 28 |
| | - | - | - | - | - | - | - | - | - | - | - | - | - | - | - | - | - | - | - | - | - | - | - | - | - | - | - | - |

| Mar | Th | F | Sa | Su | M | Tu | W | Th | F | Sa | Su | M | Tu | W | Th | F | Sa | Su | M | Tu | W | Th | F | Sa | | | | | | | |
|------|----|---|----|----|---|----|---|----|---|----|----|----|----|----|----|----|----|----|----|----|----|----|----|----|----|----|----|----|----|----|----|
| 2018 | 1 | 2 | 3 | 4 | 5 | 6 | 7 | 8 | 9 | 10 | 11 | 12 | 13 | 14 | 15 | 16 | 17 | 18 | 19 | 20 | 21 | 22 | 23 | 24 | 25 | 26 | 27 | 28 | 29 | 30 | 31 |
| | - | - | - | - | - | - | - | - | - | - | - | - | - | - | - | - | - | - | - | - | - | - | - | - | - | - | - | - | - | - | |

| Apr | Su | M | Tu | W | Th | F | Sa | Su | M | Tu | W | Th | F | Sa | Su | M | Tu | W | Th | F | Sa | Su | M | | | | | | | |
|------|----|---|----|---|----|---|----|----|---|----|----|----|----|----|----|----|----|----|----|----|----|----|----|----|----|----|----|----|----|----|
| 2018 | 1 | 2 | 3 | 4 | 5 | 6 | 7 | 8 | 9 | 10 | 11 | 12 | 13 | 14 | 15 | 16 | 17 | 18 | 19 | 20 | 21 | 22 | 23 | 24 | 25 | 26 | 27 | 28 | 29 | 30 |
| | - | - | - | - | - | - | - | - | - | - | - | - | - | - | - | - | - | - | - | - | - | - | - | - | - | - | - | - | - | - |

| May | Tu | W | Th | F | Sa | Su | M | Tu | W | Th | F | Sa | Su | M | Tu | W | Th | F | Sa | Su | M | Tu | W | Th | | | | | | | |
|------|----|---|----|---|----|----|---|----|---|----|----|----|----|----|----|----|----|----|----|----|----|----|----|----|----|----|----|----|----|----|----|
| 2018 | 1 | 2 | 3 | 4 | 5 | 6 | 7 | 8 | 9 | 10 | 11 | 12 | 13 | 14 | 15 | 16 | 17 | 18 | 19 | 20 | 21 | 22 | 23 | 24 | 25 | 26 | 27 | 28 | 29 | 30 | 31 |
| | - | - | - | - | - | - | - | - | - | - | - | - | - | - | - | - | - | - | - | - | - | - | - | - | - | - | - | - | - | - | |

| June | F | Sa | Su | M | Tu | W | Th | F | Sa | Su | M | Tu | W | Th | F | Sa | Su | M | Tu | W | Th | F | Sa | | | | | | | |
|------|---|----|----|---|----|---|----|---|----|----|----|----|----|----|----|----|----|----|----|----|----|----|----|----|----|----|----|----|----|----|
| 2018 | 1 | 2 | 3 | 4 | 5 | 6 | 7 | 8 | 9 | 10 | 11 | 12 | 13 | 14 | 15 | 16 | 17 | 18 | 19 | 20 | 21 | 22 | 23 | 24 | 25 | 26 | 27 | 28 | 29 | 30 |
| | - | - | - | - | - | - | - | - | - | - | - | - | - | - | - | - | - | - | - | - | - | - | - | - | - | - | - | - | - | - |

| Jul | Su | M | Tu | W | Th | F | Sa | Su | M | Tu | W | Th | F | Sa | Su | M | Tu | W | Th | F | Sa | Su | M | Tu | | | | | | | |
|------|----|---|----|---|----|---|----|----|---|----|----|----|----|----|----|----|----|----|----|----|----|----|----|----|----|----|----|----|----|----|----|
| 2018 | 1 | 2 | 3 | 4 | 5 | 6 | 7 | 8 | 9 | 10 | 11 | 12 | 13 | 14 | 15 | 16 | 17 | 18 | 19 | 20 | 21 | 22 | 23 | 24 | 25 | 26 | 27 | 28 | 29 | 30 | 31 |
| | - | - | - | - | - | - | - | - | - | - | - | - | - | - | - | - | - | - | - | - | - | - | - | - | - | - | - | - | - | - | |

| Aug | W | Th | F | Sa | Su | M | Tu | W | Th | F | Sa | Su | M | Tu | W | Th | F | Sa | Su | M | Tu | W | Th | F | | | | | | | |
|------|---|----|---|----|----|---|----|---|----|----|----|----|----|----|----|----|----|----|----|----|----|----|----|----|----|----|----|----|----|----|----|
| 2018 | 1 | 2 | 3 | 4 | 5 | 6 | 7 | 8 | 9 | 10 | 11 | 12 | 13 | 14 | 15 | 16 | 17 | 18 | 19 | 20 | 21 | 22 | 23 | 24 | 25 | 26 | 27 | 28 | 29 | 30 | 31 |
| | - | - | - | - | - | - | - | - | - | - | - | - | - | - | - | - | - | - | - | - | - | - | - | - | - | - | - | - | - | - | |

| Sep | Sa | Su | M | Tu | W | Th | F | Sa | Su | M | Tu | W | Th | F | Sa | Su | M | Tu | W | Th | F | Sa | Su | | | | | | | |
|------|----|----|---|----|---|----|---|----|----|----|----|----|----|----|----|----|----|----|----|----|----|----|----|----|----|----|----|----|----|----|
| 2018 | 1 | 2 | 3 | 4 | 5 | 6 | 7 | 8 | 9 | 10 | 11 | 12 | 13 | 14 | 15 | 16 | 17 | 18 | 19 | 20 | 21 | 22 | 23 | 24 | 25 | 26 | 27 | 28 | 29 | 30 |
| | - | - | - | - | - | - | - | - | - | - | - | - | - | - | - | - | - | - | - | - | - | - | - | - | - | - | - | - | - | - |

Low season Reserved



Availability calendar - from : september 2018

| Oct | M | Tu | W | Th | F | Sa | Su | M | Tu | W | Th | F | Sa | Su | M | Tu | W | Th | F | Sa | Su | M | Tu | W | | | | | | | |
|------|---|----|---|----|---|----|----|---|----|----|----|----|----|----|----|----|----|----|----|----|----|----|----|----|----|----|----|----|----|----|----|
| 2018 | 1 | 2 | 3 | 4 | 5 | 6 | 7 | 8 | 9 | 10 | 11 | 12 | 13 | 14 | 15 | 16 | 17 | 18 | 19 | 20 | 21 | 22 | 23 | 24 | 25 | 26 | 27 | 28 | 29 | 30 | 31 |

| Nov | Th | F | Sa | Su | M | Tu | W | Th | F | Sa | Su | M | Tu | W | Th | F | Sa | Su | M | Tu | W | Th | F | | | | | | | |
|------|----|---|----|----|---|----|---|----|---|----|----|----|----|----|----|----|----|----|----|----|----|----|----|----|----|----|----|----|----|----|
| 2018 | 1 | 2 | 3 | 4 | 5 | 6 | 7 | 8 | 9 | 10 | 11 | 12 | 13 | 14 | 15 | 16 | 17 | 18 | 19 | 20 | 21 | 22 | 23 | 24 | 25 | 26 | 27 | 28 | 29 | 30 |



Low season



Reserved

[Month : Next >>](#)

Rental rates - Luxury House - from 1 to 5 Person(s)

| Rates | Night | Weekend | week | 2 weeks | Month |
|------------------|-------|-------------------|---------------------|---------|--------|
| Low season | £70* | £246* (Friday) | £493* (Saturday) | - | £1344* |
| Mid season | £76* | - | £533* (Saturday) | - | £1792* |
| High season | - | - | £712* (Saturday) | - | £2688* |
| Festive specials | £89* | - | £582* | - | - |

(Check-in day)

[Book now](#)

Booking conditions

• Reservation

→ Payment made upon reservation :
30% of rental sum
→ Deposit required : £179*

• rentals

→ Day tax included
→ Cleaning charge levy on departure : £54*

[▶ Book now](#)

Accepted methods of payment

• Cash

[▶ Contact the owner](#)

Contact directly the property owners

www.ihacom.co.uk

Advert No.

44038

[>> Book now <<](#)

Contact

Spoken languages



* Converted at the rate indicated : €100 = \$117.29 = £89.59

Advert No. 44038

www.ihacom.co.uk

