

# Holiday lettings Wattwiller Village House

Rural house in the quiet of Wattwiller. Ideal for rest, relax, meet with family or friends.



**Village House**, detached, 1 floor, separate entrance, in a(an) Private property

Setting : quiet, mountainy

Capacity : from 2 to 8 person(s)

Bedroom(s) : 4

Room(s) : 6



Meublés de Tourisme (2 stars)

Wattwiller - Upper Rhine (68) - Alsace

France

Reservation : +33 (0) 3 89 75 54 81 (France)

Advert No. 19931

www.ihacom.co.uk



## Holiday lettings



Village House, detached, 1 floor, separate entrance, in a(an) Private property

- **Ideal for all age groups, large families**
- **View :** mountain, garden/park, courtyard, meadow, Vineyards, river
- **Setting :** quiet, mountainy
- **Exposure :** South

" The great closed court allows to store cars and bicycles and take food out of sight. The house is totally independent. You will be rocked by the creek running through the property. The spacious rooms will put you at ease and give you a pleasant stay. Our younger tenants will be delighted by the presence of a few hens and rabbits. "

## Assets

- **Parking :**  
Covered parking : 3 carport.
- **Advantages :**  
Ski locker, table football, 1 bike(s)
- **baby equipment :**  
Baby chair



the house

## Surroundings & location



Mountain

" Alsace is a historical and cultural region. During your stay you will have the opportunity to discover all of its attractions (museums, castles, wine cellars, farm Inns, picturesque villages, Christmas markets and skiing in winter). You can even take advantage of your stay to make a getaway to Switzerland and Germany. We live in the village and therefore we are at your disposal for advice in your getaways. "

### Leisure

- **Leisure activities less than 20 km / 12 miles :**

Cross-country skiing, ice-skating, bathing, pedalo, golf, tennis, riding school, pathway, hiking, mountain bike (path), horse trekking, fishing

- **Attractions and relaxation :**

Bar/pub, discotheque, restaurant, cinema, park and garden, leisure park, zoo/animal park, art gallery, museum, cellar and wine tasting

### Surroundings

- **Locality :**

Ski slopes 15.5mi.  
Ski lifts 15.5mi.  
Ice skating rink 15.5mi.  
Heated swimming pool 2.5mi.  
Public swimming pool 2.5mi.  
Public tennis court 2.5mi.  
9 hole golf course 6mi.  
River 1.5mi.  
Stretch of water 3mi.  
Lake 18.5mi.  
Forest 660'  
Mountain range 1.85mi.

- **Amenities :**

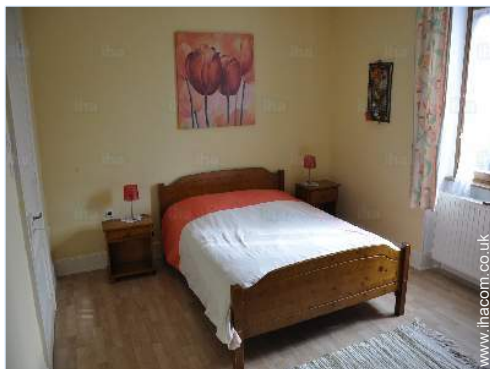
Bike/mountain bike hire  
Car rental 3mi.  
Local shops 330'  
Supermarket 3mi.  
Hairdressing salon 660'  
Post office 330'  
Bank 990'  
Cash point 2.5mi.  
Chemist 2.5mi.  
Doctor 660'  
Nurse 990'  
Hospital 4.5mi.



bedroom



southerly view



bedroom

### Exterior

- **Ground surface :**  
0.25 acre.
- **Outside setting :**  
Private courtyard, enclosed grounds, garden, lawn, orchard, kitchen garden, stream
- **Outside amenities :**  
BBQ, garden table(s), 10 garden seat(s), 1 chaise(s) longue(s), 2 sun recliner(s)



bedroom

### Interior

- **Receive up to :**  
from 2 to 8 person(s)
- **Liveable floor area :**  
1,300 Sq.ft.
- **Interior layout :**  
6 Room(s), 4 bedroom(s), 1 bathroom, 1 WC, living room 215 Sq.ft., large american style kitchen, pantry
- **Sleeps - bed(s) :**  
2 double bed(s), 4 single bed(s), 1 folding bed(s) 1 pers, 1 sofa bed(s) 1 pers, 1 baby cot(s)
- **Guest facilities :**  
T.V., board games, book collection, wardrobe, Hanging wardrobe, heated towel rail, central heating, Curtains, Double glazed, fire alarm
- **Appliances :**  
Crockery/cutlery, kitchen utensils, cafetiere, electric coffee maker, electric kettle, toaster, electric raclette set, gas cooker, oven, microwave oven, extractor hood, refrigerator, freezer, washing machine, vacuum cleaner, iron, ironing board

### Services

- **Washing :**  
Sheets supplement, Towels supplement, Blanket(s), Quilt(s), Pillows
- **House :**  
Cleaning on departure supplement (+£36\*), Parking

### For your guidance

- **For your guidance**  
Pets accepted under certain conditions (ask the owner)  
Present on site : farm animals  
Non smoking rental



bedroom



Photo album - 1



the house



southerly view



bedroom



bedroom



bedroom



Photo album - 2



bedroom



bedroom



furniture



bathroom



kitchen



kitchen



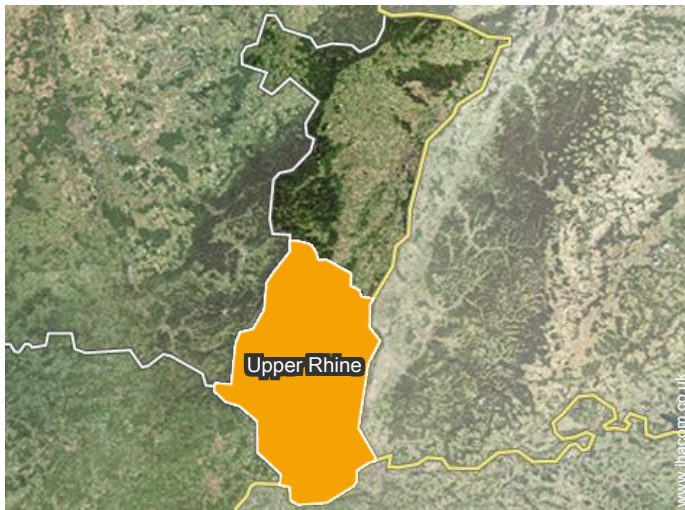
Mountain



view over the mountain



### Location



### Location & Access

" Wattwiller, known by its nitrate-free water, is about 20 km from Colmar and Mulhouse, and 4 km from Cernay. Also located at the foot of the Vieil Armand, on the route of wines and crêtes. Our house, at the end of village, lies at the foot of yellow chateau' and the vineyards. "



GPS coordinates in degrees, minutes, seconds: Latitude 47°50'4"N - Longitude 7°10'37"E (Dwelling)

#### Address

→ 4 rue de la Victoire  
68700 Wattwiller

#### • Motorway (junction) uffholtz

→ Cernay, Upper Rhine, Alsace, France  
→ Distance : 2.5mi.  
→ Time : 5'

- Cernay : (2.5mi.)
- Thann : (4.5mi.)
- Colmar : (18.5mi.)

### Contact

Spoken languages



# Holiday lettings Wattwiller - France Village House

7  
[Book now](#)

## Availability calendar - from : december 2017

Dec	F	Sa	Su	M	Tu	W	Th	F	Sa	Su	M	Tu	W	Th	F	Sa	Su	M	Tu	W	Th	F	Sa	Su							
2017	1	2	3	4	5	6	7	8	9	10	11	12	13	14	15	16	17	18	19	20	21	22	23	24	25	26	27	28	29	30	31

Jan	M	Tu	W	Th	F	Sa	Su	M	Tu	W	Th	F	Sa	Su	M	Tu	W	Th	F	Sa	Su	M	Tu	W							
2018	1	2	3	4	5	6	7	8	9	10	11	12	13	14	15	16	17	18	19	20	21	22	23	24	25	26	27	28	29	30	31

Feb	Th	F	Sa	Su	M	Tu	W	Th	F	Sa	Su	M	Tu	W	Th	F	Sa	Su	M	Tu	W									
2018	1	2	3	4	5	6	7	8	9	10	11	12	13	14	15	16	17	18	19	20	21	22	23	24	25	26	27	28		

Mar	Th	F	Sa	Su	M	Tu	W	Th	F	Sa	Su	M	Tu	W	Th	F	Sa	Su	M	Tu	W	Th	F	Sa							
2018	1	2	3	4	5	6	7	8	9	10	11	12	13	14	15	16	17	18	19	20	21	22	23	24	25	26	27	28	29	30	31

Apr	Su	M	Tu	W	Th	F	Sa	Su	M	Tu	W	Th	F	Sa	Su	M	Tu	W	Th	F	Sa	Su	M								
2018	1	2	3	4	5	6	7	8	9	10	11	12	13	14	15	16	17	18	19	20	21	22	23	24	25	26	27	28	29	30	

May	Tu	W	Th	F	Sa	Su	M	Tu	W	Th	F	Sa	Su	M	Tu	W	Th	F	Sa	Su	M	Tu	W	Th							
2018	1	2	3	4	5	6	7	8	9	10	11	12	13	14	15	16	17	18	19	20	21	22	23	24	25	26	27	28	29	30	31

June	F	Sa	Su	M	Tu	W	Th	F	Sa	Su	M	Tu	W	Th	F	Sa	Su	M	Tu	W	Th	F	Sa								
2018	1	2	3	4	5	6	7	8	9	10	11	12	13	14	15	16	17	18	19	20	21	22	23	24	25	26	27	28	29	30	

Jul	Su	M	Tu	W	Th	F	Sa	Su	M	Tu	W	Th	F	Sa	Su	M	Tu	W	Th	F	Sa	Su	M	Tu							
2018	1	2	3	4	5	6	7	8	9	10	11	12	13	14	15	16	17	18	19	20	21	22	23	24	25	26	27	28	29	30	31

Aug	W	Th	F	Sa	Su	M	Tu	W	Th	F	Sa	Su	M	Tu	W	Th	F	Sa	Su	M	Tu	W	Th	F							
2018	1	2	3	4	5	6	7	8	9	10	11	12	13	14	15	16	17	18	19	20	21	22	23	24	25	26	27	28	29	30	31

Sep	Sa	Su	M	Tu	W	Th	F	Sa	Su	M	Tu	W	Th	F	Sa	Su	M	Tu	W	Th	F	Sa	Su								
2018	1	2	3	4	5	6	7	8	9	10	11	12	13	14	15	16	17	18	19	20	21	22	23	24	25	26	27	28	29	30	

■ Mid season ■ High season



# Holiday lettings Upper Rhine - Alsace Village House

8  
[Book now](#)

## Availability calendar - from : september 2018

Oct	M	Tu	W	Th	F	Sa	Su	M	Tu	W	Th	F	Sa	Su	M	Tu	W	Th	F	Sa	Su	M	Tu	W							
2018	1	2	3	4	5	6	7	8	9	10	11	12	13	14	15	16	17	18	19	20	21	22	23	24	25	26	27	28	29	30	31
	-	-	-	-	-	-	-	-	-	-	-	-	-	-	-	-	-	-	-	-	-	-	-	-	-	-	-	-	-	-	

Nov	Th	F	Sa	Su	M	Tu	W	Th	F	Sa	Su	M	Tu	W	Th	F	Sa	Su	M	Tu	W	Th	F							
2018	1	2	3	4	5	6	7	8	9	10	11	12	13	14	15	16	17	18	19	20	21	22	23	24	25	26	27	28	29	30
	-	-	-	-	-	-	-	-	-	-	-	-	-	-	-	-	-	-	-	-	-	-	-	-	-	-	-	-	-	

■ Mid season

■ High season

[Month : Next >>](#)

## Rental rates - Village House - from 2 to 8 Person(s)

Rates	Night	Weekend	week	2 weeks	Month
<span style="color: #4F81BD;">■</span> Mid season	-	£134*	£340*	-	-
<span style="color: #E67E22;">■</span> High season	-	£134*	£502*	-	-

[Book now](#)

### Booking conditions

#### • Reservation

- Payment made upon reservation : 25% of rental sum
- Payment balance : on handing over the keys
- Deposit required : £134\*

#### • rentals

- Service charges included
- Day tax in addition
- Cleaning charge levy on departure : £36\*

[▶ Book now](#)

[▶ Contact the owner](#)

### Accepted methods of payment

- Bank transfer (wire)
- Cheque
- Cash
- Holiday voucher

Contact directly the property owners

[www.ihacom.co.uk](http://www.ihacom.co.uk)

Advert No.

19931

[>> Book now <<](#)

### Contact

Spoken languages



\* Converted at the rate indicated : €100 = \$117.29 = £89.59

Advert No. 19931

[www.ihacom.co.uk](http://www.ihacom.co.uk)

