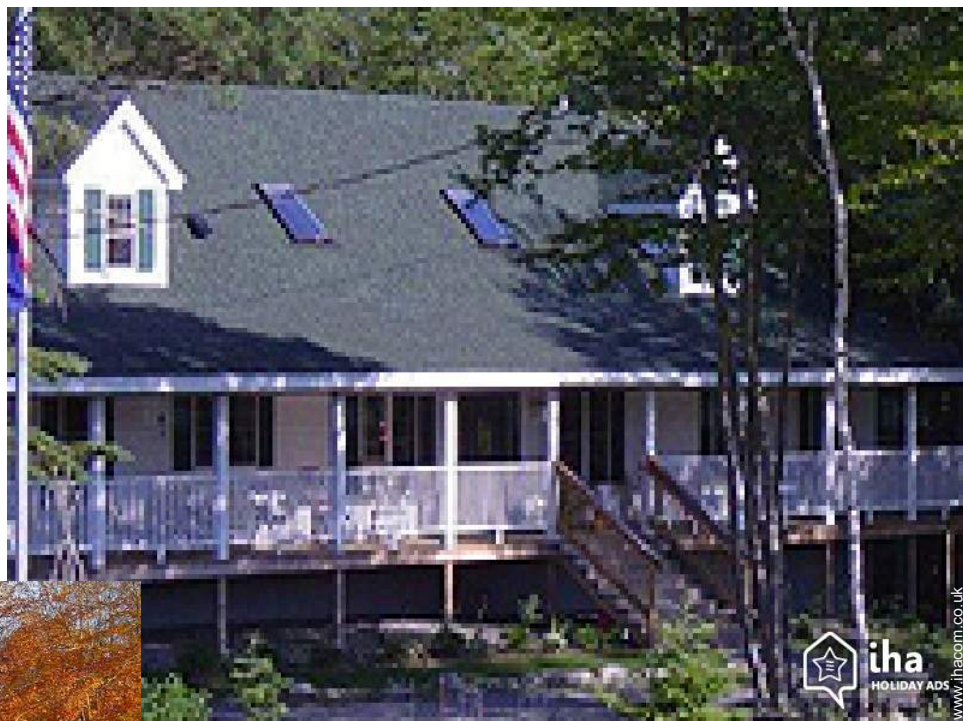


Holiday lettings Northeast "Mid-Coast Cottage"



Cottage, detached, single storey in a(an)
Charming Property

Setting : country setting, peaceful

Capacity : from 1 to 5 person(s)
Bedroom(s) : 2

Washington - Maine

United States

Reservation : +1 (207) 446 2407 (United States)

Advert No. 45502

www.ihacom.co.uk



Holiday lettings



Cottage, detached, single storey in a(an) Charming Property

- **Ideal for all age groups, couples**
- **View :** unobscured, country side, farmland, forest, fantastic sunset
- **Setting :** country setting, peaceful
- **Exposure :** West

Assets

- **Advantages :**
Snowshoes (pairs), ping-pong table
- **baby equipment :**
Baby chair



Cottage

Surroundings & location



Countryside



Ski



Fishing

Leisure

- **Leisure activities less than 20 km / 12 miles :**

Cross-country skiing, bathing, canoeing, coastal/forest paths, hiking, hunting, fishing

Surroundings

- **Locality :**

Ski slopes 25mi.
Ski lifts 25mi.
Sea/ocean 25mi.
Sandy beach 6mi.
Rocky beach 2.5mi.
9 hole golf course 25mi.
18 hole golf course 25mi.
Lake 1.85mi.
Forest <165'
Marina 25mi.

- **Amenities :**

Breadshop 9mi.
Local shops 9mi.
Supermarket 9mi.
High class retailers 25mi.
Hairdressing salon 3mi.
Post office 3mi.
Bank 9mi.
Cash point 9mi.
Chemist 25mi.
Doctor 25mi.
Hospital 25mi.



view over the countryside



easterly view

Holiday lettings Maine - Northeast "Mid-Coast Cottage"

3

[Book now](#)



the property

Exterior

- **Ground surface :**
> 25 acres
- **Outside accommodation :**
Sundeck
- **Outside setting :**
Garden, lawn, woods, stream
- **Outside amenities :**
Gas BBQ, 2 chaise(s) longue(s), outside shower facilities



bedroom

Interior

- **Receive up to :**
from 1 to 5 person(s)
- **Liveable floor area :**
600 Sq.ft.
- **Interior layout :**
2 bedroom(s), 1 bathroom, living room, typical style kitchen, dining area, dressing room, laundry room, pantry, veranda
- **Sleeps - bed(s) :**
1 super king-size bed(s), 3 single bed(s), 1 sofa bed(s) 1 pers
- **Guest facilities :**
T.V., DVD player, board games, book collection, film collection, cable/satellite, wifi, cupboard, radio alarmclock, hair dryer, fully air conditioned, ceiling paddle fan, central heating, wood-burning stove, Curtains
- **Appliances :**
Crockery/cutlery, kitchen utensils, electric coffee maker, toaster, electric cooker, oven, micro-wave oven, refridgerator, dish washer, washing machine, clothes dryer, vacuum cleaner

Services

- **Washing :**
Sheets, Towels, Linen, Blanket(s), Pillows
- **House :**
Cleaning on departure, Snow clearance, Parking
- **Restauration :**
Breakfast supplement (+£6*)

For your guidance

- **For your guidance**
Children welcome
Pets accepted
Present on site : wild animals
Non smoking rental, mobile telephone network coverage
Electricity supply : mains



kitchen

Advert No. 45502

www.ihacom.co.uk



>> HOLIDAY LETTINGS

BOOK DIRECT WITH THE OWNERS

Photo album - 1



Leisure facilities



Cottage



easterly view



view over the countryside



the property



kitchen

Photo album - 2



bedroom



interior



living room



living room



dining area



master bedroom



bathroom



sundeck

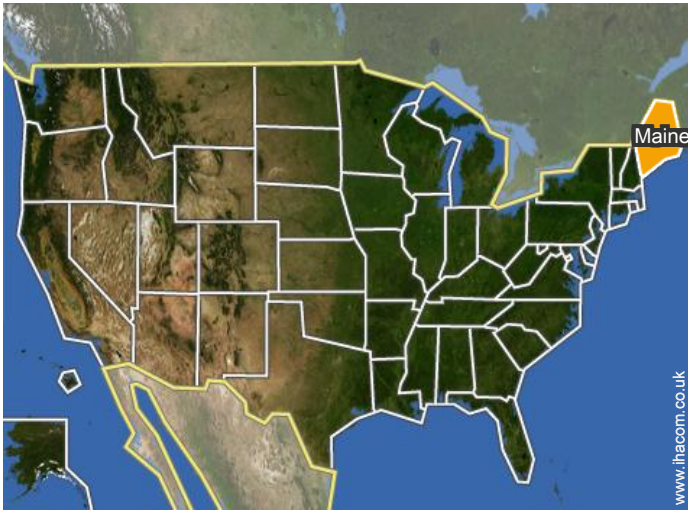


outside



Leisure

Location



Location & Access



GPS coordinates in degrees, minutes, seconds: Latitude 44°16'40"N - Longitude 69°25'52"W ([Dwelling](#))

Address

→ 673 Razorville Rd.
04574 Washington

• **Airport Bangor**

→ Bangor, Maine, United States
→ Distance : 62mi.

- Windsor : (10mi.)
- Union : (9mi.)
- Camden : (25mi.)

Contact

Spoken languages



Holiday lettings Washington - United States "Mid-Coast Cottage"

7
[Book now](#)

Availability calendar - from : december 2017

Dec	F	Sa	Su	M	Tu	W	Th	F	Sa	Su	M	Tu	W	Th	F	Sa	Su	M	Tu	W	Th	F	Sa	Su							
2017	1	2	3	4	5	6	7	8	9	10	11	12	13	14	15	16	17	18	19	20	21	22	23	24	25	26	27	28	29	30	31
															-	-	-	-	-	-	-	-	-	-	-	-	-	-	-	-	

Jan	M	Tu	W	Th	F	Sa	Su	M	Tu	W	Th	F	Sa	Su	M	Tu	W	Th	F	Sa	Su	M	Tu	W							
2018	1	2	3	4	5	6	7	8	9	10	11	12	13	14	15	16	17	18	19	20	21	22	23	24	25	26	27	28	29	30	31
	-	-	-	-	-	-	-	-	-	-	-	-	-	-	-	-	-	-	-	-	-	-	-	-	-	-	-	-	-	-	

Feb	Th	F	Sa	Su	M	Tu	W	Th	F	Sa	Su	M	Tu	W	Th	F	Sa	Su	M	Tu	W								
2018	1	2	3	4	5	6	7	8	9	10	11	12	13	14	15	16	17	18	19	20	21	22	23	24	25	26	27	28	
	-	-	-	-	-	-	-	-	-	-	-	-	-	-	-	-	-	-	-	-	-	-	-	-	-	-	-	-	-

Mar	Th	F	Sa	Su	M	Tu	W	Th	F	Sa	Su	M	Tu	W	Th	F	Sa	Su	M	Tu	W	Th	F	Sa							
2018	1	2	3	4	5	6	7	8	9	10	11	12	13	14	15	16	17	18	19	20	21	22	23	24	25	26	27	28	29	30	31
	-	-	-	-	-	-	-	-	-	-	-	-	-	-	-	-	-	-	-	-	-	-	-	-	-	-	-	-	-	-	

Apr	Su	M	Tu	W	Th	F	Sa	Su	M	Tu	W	Th	F	Sa	Su	M	Tu	W	Th	F	Sa	Su	M							
2018	1	2	3	4	5	6	7	8	9	10	11	12	13	14	15	16	17	18	19	20	21	22	23	24	25	26	27	28	29	30
	-	-	-	-	-	-	-	-	-	-	-	-	-	-	-	-	-	-	-	-	-	-	-	-	-	-	-	-	-	-

May	Tu	W	Th	F	Sa	Su	M	Tu	W	Th	F	Sa	Su	M	Tu	W	Th	F	Sa	Su	M	Tu	W	Th							
2018	1	2	3	4	5	6	7	8	9	10	11	12	13	14	15	16	17	18	19	20	21	22	23	24	25	26	27	28	29	30	31
	-	-	-	-	-	-	-	-	-	-	-	-	-	-	-	-	-	-	-	-	-	-	-	-	-	-	-	-	-	-	

June	F	Sa	Su	M	Tu	W	Th	F	Sa	Su	M	Tu	W	Th	F	Sa	Su	M	Tu	W	Th	F	Sa							
2018	1	2	3	4	5	6	7	8	9	10	11	12	13	14	15	16	17	18	19	20	21	22	23	24	25	26	27	28	29	30
	-	-	-	-	-	-	-	-	-	-	-	-	-	-	-	-	-	-	-	-	-	-	-	-	-	-	-	-	-	-

Jul	Su	M	Tu	W	Th	F	Sa	Su	M	Tu	W	Th	F	Sa	Su	M	Tu	W	Th	F	Sa	Su	M	Tu							
2018	1	2	3	4	5	6	7	8	9	10	11	12	13	14	15	16	17	18	19	20	21	22	23	24	25	26	27	28	29	30	31
	-	-	-	-	-	-	-	-	-	-	-	-	-	-	-	-	-	-	-	-	-	-	-	-	-	-	-	-	-	-	

Aug	W	Th	F	Sa	Su	M	Tu	W	Th	F	Sa	Su	M	Tu	W	Th	F	Sa	Su	M	Tu	W	Th	F							
2018	1	2	3	4	5	6	7	8	9	10	11	12	13	14	15	16	17	18	19	20	21	22	23	24	25	26	27	28	29	30	31
	-	-	-	-	-	-	-	-	-	-	-	-	-	-	-	-	-	-	-	-	-	-	-	-	-	-	-	-	-	-	

Sep	Sa	Su	M	Tu	W	Th	F	Sa	Su	M	Tu	W	Th	F	Sa	Su	M	Tu	W	Th	F	Sa	Su							
2018	1	2	3	4	5	6	7	8	9	10	11	12	13	14	15	16	17	18	19	20	21	22	23	24	25	26	27	28	29	30
	-	-	-	-	-	-	-	-	-	-	-	-	-	-	-	-	-	-	-	-	-	-	-	-	-	-	-	-	-	-



Holiday lettings Maine - Northeast "Mid-Coast Cottage"

8
[Book now](#)

Availability calendar - from : september 2018

Oct	M	Tu	W	Th	F	Sa	Su	M	Tu	W	Th	F	Sa	Su	M	Tu	W	Th	F	Sa	Su	M	Tu	W							
2018	1	2	3	4	5	6	7	8	9	10	11	12	13	14	15	16	17	18	19	20	21	22	23	24	25	26	27	28	29	30	31
	-	-	-	-	-	-	-	-	-	-	-	-	-	-	-	-	-	-	-	-	-	-	-	-	-	-	-	-	-	-	

Nov	Th	F	Sa	Su	M	Tu	W	Th	F	Sa	Su	M	Tu	W	Th	F	Sa	Su	M	Tu	W	Th	F							
2018	1	2	3	4	5	6	7	8	9	10	11	12	13	14	15	16	17	18	19	20	21	22	23	24	25	26	27	28	29	30
	-	-	-	-	-	-	-	-	-	-	-	-	-	-	-	-	-	-	-	-	-	-	-	-	-	-	-	-	-	

[Month : Next >>](#)

Rental rates - Cottage - from 1 to 5 Person(s)

Rates	Night	Weekend	week	2 weeks	Month
 Low season	£76* > 7	-	£535*	-	-
 Mid season	£103* > 2	-	£592*	-	-
 High season	£115*	-	£649*	-	-

> Minimum Night

[Book now](#)

Booking conditions

• rentals

→ Anticipated supplement for :
- animals

Accepted methods of payment

• Visa/Delta/Electron • MasterCard/
EuroCard • Cheque • Discover •
Travellers Cheques • Cash

[▶ Book now](#)

[▶ Contact the owner](#)

Contact directly the property owners

www.ihacom.co.uk

Advert No.

45502

[>> Book now <<](#)

Contact

Spoken languages



* Converted at the rate indicated : €100 = \$117.29 = £89.59

Advert No. 45502

www.ihacom.co.uk

