

# Holiday lettings Viserbella "House francesca"

Panoramic apartment on the seafront in Rimini with balcony and view.  
Equipped with all the comforts, ideal for families.



**Flat-Apartments** 2nd floor in a(an)  
Estate 5 floors

Setting : waterfront

Capacity : from 2 to 6 person(s)

Bedroom(s) : 2

Room(s) : 2

Viserbella - Province of Rimini (RN) - Emilia-Romagna  
Italy

Advert No. 62174

www.ihacom.co.uk



## Holiday lettings



Flat-Apartments 2nd floor in a(an) Estate 5 floors

- **Ideal for family, couples with baby**
- **View :** panoramic, unobscured, not overlooked, sea/ocean, pedestrianized street, fantastic sunset
- **Setting :** waterfront
- **Exposure :** East

" Apartment of 3 rooms on the second floor with balcony overlooking the sea and the beach. The apartment of 50 square metres has a living room, a kitchen, a double room (double bed + single bed), a single room with bunk bed, bathroom with shower. Free parking inside the property, air conditioning, Internet wi - fi free. All with direct access to the balcony surrounding the House and admire the sunrise and the sunset directly on the sea. Choose your holiday apartment in two parts, both comfort and the splendid Adriatic coast sea views await you. In addition, you are directly on the beach! It is the alternative to the traditional stay in hotel in Rimini! Managed directly by our care, their comfort and cleanliness will surprise you. "

## Assets

- **Parking :**  
Covered parking : 2 carport. Parking uncovered : 4 off road.
- **baby equipment :**  
Baby chair, playpen

## Surroundings & location



Seaside



Fishing



Spa

" In quiet area, you will find many tourist attractions: from the theme parks like Mirabilandia, Italy in miniature and the Acquafan. Two minutes walk from the beach where you can enjoy discounts that we are reserved. Services such as ATMs, pharmacy, restaurants, bars, Church and others are all very close. During the evening, the seafront promenade becomes a pedestrian area to enjoy long walk between shops and attractions. "

### Leisure

- **Leisure activities less than 20 km / 12 miles :**

Bathing, pedalo, water skiing, windsurfing, sailing, kite surfing, tennis, boat trips, mini-golf, go-karting, volleyball, fishing, pétanque pitch

- **Supervised :**

Tennis school

- **Attractions and relaxation :**

Bar/pub, restaurant

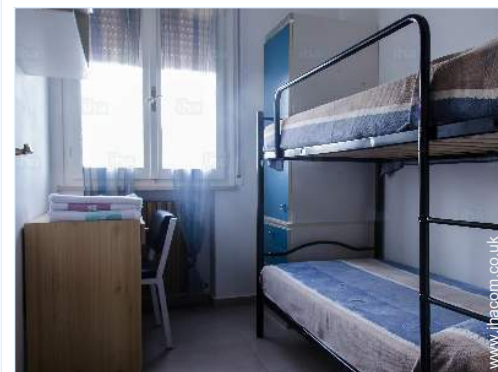
### Surroundings

- **Locality :**

Sea/ocean <165'  
Sandy beach <165'  
Watersports centre <165'  
Marina <165'  
Via ferrata-alpinism 0.3mi.

- **Amenities :**

Village centre 0.3mi.  
Town centre 3mi.  
Bus stop / bus station <165'  
Breadshop 990'  
Supermarket 990'  
Post office 990'  
Bank 990'  
Chemist 0.5mi.  
Hospital 3mi.  
Dispensing clinic 1.25mi.



small bedroom



large bedroom



bathroom

### Interior

- **Receive up to :**  
from 2 to 6 person(s) (4 adults, 2 children)
- **Liveable floor area :**  
530 Sq.ft.
- **Interior layout :**  
2 Room(s), 2 bedroom(s), 1 shower room, 1 WC, living room 150 Sq.ft., kitchenette, dining room, cosy nook
- **Sleeps - bed(s) :**  
1 double bed(s), 1 sofa bed(s) 2 pers, 1 single bed(s), 1 bunk beds, 1 baby cot(s)
- **Guest facilities :**  
Lift, T.V., t.v points, internet access, wifi, wardrobe, cupboard, Hanging wardrobe, hair dryer, partly air conditioned, central heating, Curtains, Double glazed, Rolling shutters
- **Appliances :**  
Crockery/cutlery, kitchen utensils, cafetiere, gas cooker, oven, micro-wave oven, refridgerator, freezer, washing machine, iron, ironing board

### Exterior

- **Outside accommodation :**  
Balcony 130 Sq.ft., traditional tent
- **Outside setting :**  
Enclosed grounds 3,300 Sq.ft.
- **Outside amenities :**  
Garden table(s), 4 garden seat(s), 1 sun recliner(s)



living room

### Services

- **Washing :**  
Sheets (1 X / per week), Towels (1 X / per week), Linen (1 X / per week), Blanket(s) (1 X / per week), Pillows (1 X / per week)
- **House :**  
Cleaning, Cleaning on departure, Garden/swimming pool maintenance, Parking

### For your guidance

- **For your guidance**  
Children welcome  
Pets accepted under certain conditions (ask the owner)  
Mobile telephone network coverage  
Water : hot/cold
- **Handicapped people welcome**  
Wheelchair access  
Fitted out for the disabled : mobility



living room

Photo album - 1



large bedroom



small bedroom



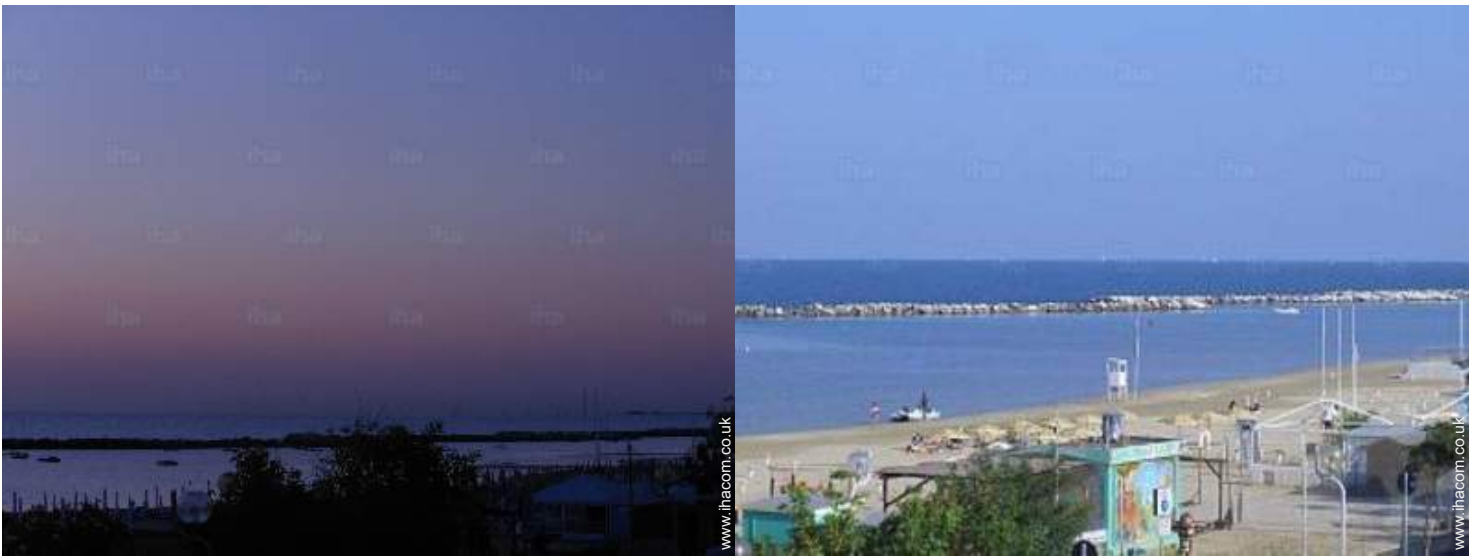
bathroom

Photo album - 2



living room

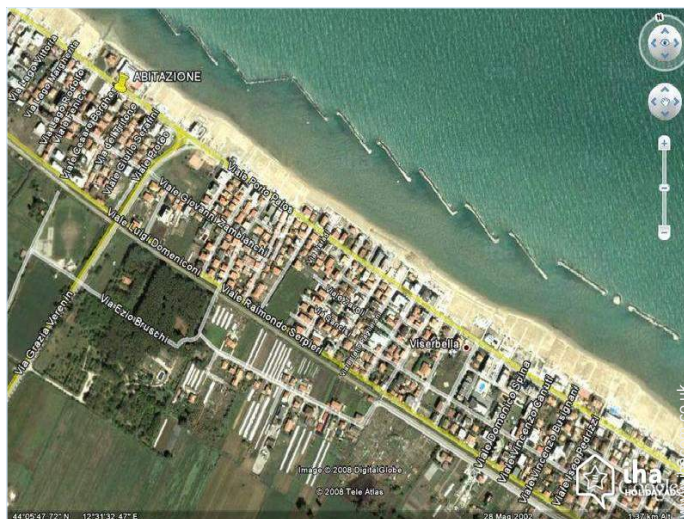
living room



view from the balcony


view from the house

## Route map



## Location & Access

" We are located at Rimini Nord in Viserbella di Rimini at 2 minutes of the Italy in miniature. "

 GPS coordinates in degrees, minutes, seconds: Latitude 44° 6'4"N - Longitude 12°31'12"E ([Dwelling](#))

### Address

→ Via Cesare Borghesi n°2  
47811 Viserbella

### • Motorway (junction) A14 Rimini Nord

→ Rimini, Province of Rimini, Emilia-Romagna, Italy  
→ Distance : 1.5mi.  
→ Time : 5'

### • Train station Rimini Torre Pedrera

→ Torre Pedrera, Province of Rimini, Emilia-Romagna, Italy  
→ Distance : 0.5mi.  
→ Time : 5'

### • Airport Rimini Miramare

→ Rimini, Province of Rimini, Emilia-Romagna, Italy  
→ Distance : 6mi.  
→ Time : 15'

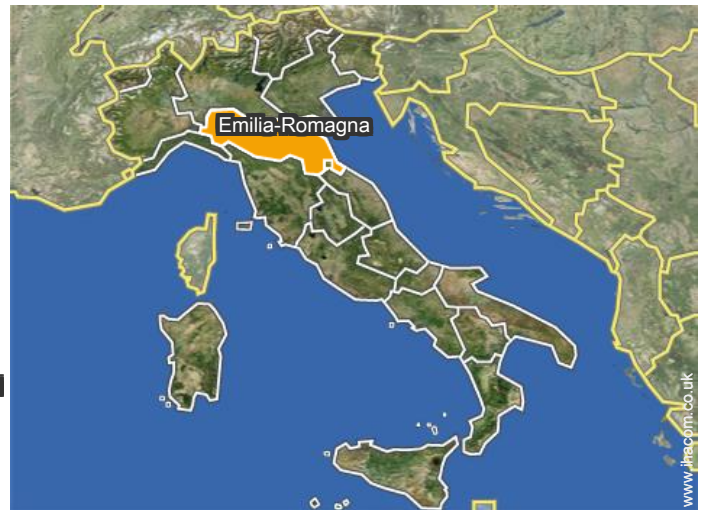
- Rimini : (2.5mi.)
- Riccione : (6mi.)

## Contact

Spoken languages



Location



# Holiday lettings Province of Rimini - Emilia-Romagna "House francesca"

[Book now](#)

Availability calendar - from : august 2018

Aug	W	Th	F	Sa	Su	M	Tu	W	Th	F	Sa	Su	M	Tu	W	Th	F	Sa	Su	M	Tu	W	Th	F							
2018	1	2	3	4	5	6	7	8	9	10	11	12	13	14	15	16	17	18	19	20	21	22	23	24	25	26	27	28	29	30	31
																	-	-	-	-	-	-	-	-	-	-	-	-	-	-	-

Sep	Sa	Su	M	Tu	W	Th	F	Sa	Su	M	Tu	W	Th	F	Sa	Su	M	Tu	W	Th	F	Sa	Su							
2018	1	2	3	4	5	6	7	8	9	10	11	12	13	14	15	16	17	18	19	20	21	22	23	24	25	26	27	28	29	30
	-	-	-	-	-	-	-	-	-	-	-	-	-	-	-	-	-	-	-	-	-	-	-	-	-	-	-	-	-	-

Oct	M	Tu	W	Th	F	Sa	Su	M	Tu	W	Th	F	Sa	Su	M	Tu	W	Th	F	Sa	Su	M	Tu	W							
2018	1	2	3	4	5	6	7	8	9	10	11	12	13	14	15	16	17	18	19	20	21	22	23	24	25	26	27	28	29	30	31
	-	-	-	-	-	-	-	-	-	-	-	-	-	-	-	-	-	-	-	-	-	-	-	-	-	-	-	-	-	-	

Nov	Th	F	Sa	Su	M	Tu	W	Th	F	Sa	Su	M	Tu	W	Th	F	Sa	Su	M	Tu	W	Th	F							
2018	1	2	3	4	5	6	7	8	9	10	11	12	13	14	15	16	17	18	19	20	21	22	23	24	25	26	27	28	29	30
	-	-	-	-	-	-	-	-	-	-	-	-	-	-	-	-	-	-	-	-	-	-	-	-	-	-	-	-	-	-

Dec	Sa	Su	M	Tu	W	Th	F	Sa	Su	M	Tu	W	Th	F	Sa	Su	M	Tu	W	Th	F	Sa	Su	M							
2018	1	2	3	4	5	6	7	8	9	10	11	12	13	14	15	16	17	18	19	20	21	22	23	24	25	26	27	28	29	30	31
	-	-	-	-	-	-	-	-	-	-	-	-	-	-	-	-	-	-	-	-	-	-	-	-	-	-	-	-	-	-	

Jan	Tu	W	Th	F	Sa	Su	M	Tu	W	Th	F	Sa	Su	M	Tu	W	Th	F	Sa	Su	M	Tu	W	Th							
2019	1	2	3	4	5	6	7	8	9	10	11	12	13	14	15	16	17	18	19	20	21	22	23	24	25	26	27	28	29	30	31
	-	-	-	-	-	-	-	-	-	-	-	-	-	-	-	-	-	-	-	-	-	-	-	-	-	-	-	-	-	-	

Feb	F	Sa	Su	M	Tu	W	Th	F	Sa	Su	M	Tu	W	Th	F	Sa	Su	M	Tu	W	Th							
2019	1	2	3	4	5	6	7	8	9	10	11	12	13	14	15	16	17	18	19	20	21	22	23	24	25	26	27	28
	-	-	-	-	-	-	-	-	-	-	-	-	-	-	-	-	-	-	-	-	-	-	-	-	-	-	-	-

Mar	F	Sa	Su	M	Tu	W	Th	F	Sa	Su	M	Tu	W	Th	F	Sa	Su	M	Tu	W	Th	F	Sa	Su							
2019	1	2	3	4	5	6	7	8	9	10	11	12	13	14	15	16	17	18	19	20	21	22	23	24	25	26	27	28	29	30	31
	-	-	-	-	-	-	-	-	-	-	-	-	-	-	-	-	-	-	-	-	-	-	-	-	-	-	-	-	-	-	

Apr	M	Tu	W	Th	F	Sa	Su	M	Tu	W	Th	F	Sa	Su	M	Tu	W	Th	F	Sa	Su	M	Tu							
2019	1	2	3	4	5	6	7	8	9	10	11	12	13	14	15	16	17	18	19	20	21	22	23	24	25	26	27	28	29	30
	-	-	-	-	-	-	-	-	-	-	-	-	-	-	-	-	-	-	-	-	-	-	-	-	-	-	-	-	-	-

May	W	Th	F	Sa	Su	M	Tu	W	Th	F	Sa	Su	M	Tu	W	Th	F	Sa	Su	M	Tu	W	Th	F							
2019	1	2	3	4	5	6	7	8	9	10	11	12	13	14	15	16	17	18	19	20	21	22	23	24	25	26	27	28	29	30	31
	-	-	-	-	-	-	-	-	-	-	-	-	-	-	-	-	-	-	-	-	-	-	-	-	-	-	-	-	-	-	





Availability calendar - from : may 2019

June	Sa	Su	M	Tu	W	Th	F	Sa	Su	M	Tu	W	Th	F	Sa	Su	M	Tu	W	Th	F	Sa	Su							
2019	1	2	3	4	5	6	7	8	9	10	11	12	13	14	15	16	17	18	19	20	21	22	23	24	25	26	27	28	29	30
	-	-	-	-	-	-	-	-	-	-	-	-	-	-	-	-	-	-	-	-	-	-	-	-	-	-	-	-	-	

Jul	M	Tu	W	Th	F	Sa	Su	M	Tu	W	Th	F	Sa	Su	M	Tu	W	Th	F	Sa	Su	M	Tu	W							
2019	1	2	3	4	5	6	7	8	9	10	11	12	13	14	15	16	17	18	19	20	21	22	23	24	25	26	27	28	29	30	31
	-	-	-	-	-	-	-	-	-	-	-	-	-	-	-	-	-	-	-	-	-	-	-	-	-	-	-	-	-		

[Month : Next >>](#)



large bedroom

small bedroom

Booking conditions

• Reservation

→ Payment balance :  
on handing over the keys

• rentals

→ Service charges included  
→ Day tax included  
→ Cleaning charge levy on departure : £27\*

Accepted methods of payment

• International Money Order • Bank transfer (wire) • Cash

[▶ Book now](#)

[▶ Contact the owner](#)

Contact directly the property owners

[www.ihacom.co.uk](http://www.ihacom.co.uk)  
Advert No.  
62174  
[>> Book now <<](#)

Contact

Spoken languages

