

Holiday lettings Cinque Terre "Casa Camilla"

Poets Gulf view-hot pool with Turkish bath and fireplace. next 5 terre,



Village House, detached, 3 floors, separate entrance, in a(an) Charming Property

Setting : peaceful, calm

Capacity : from 2 to 6 person(s)

Bedroom(s) : 4

Room(s) : 7

Vezzano Ligure - Province of La Spezia (SP) - Liguria

Italy

Advert No. 57594

www.ihacom.co.uk



>> HOLIDAY LETTINGS

BOOK DIRECT WITH THE OWNERS

Holiday lettings



Village House, detached, 3 floors, separate entrance, in a(an) Charming Property

- **Ideal for all age groups**

- **View :** panoramic, not overlooked, sea/ocean, swimming pool, village, pedestrianized street

- **Setting :** peaceful, calm

- **Exposure :** South

" Old house-terra cielo-renovated in 2010 with a beautiful view over the Gulf of poets, well maintained in detail. very bright, terrace with hammock for the summer, fireplaces, heating to enjoy it in winter, the House is spread over three floors. hot pool and Turkish bath, a House suited to relaxation and well-being. nearly silent operation. Ligurian medieval village. swimming pool Turkish bath 3 fireplaces (in the kitchen, bedroom, pool) 5 bedrooms 4 bathrooms 1 kitchen with panoramic balcony with Ligurian stone exhibition swing and hammock, stereo tv, internet in almost every room terrace with outstanding views from Portovenere to mass good starting point to visit the Liguria and Tuscany motorway at the foot of the Hill excellent parking "

Assets

- **Swimming pool :**

Private swimming-pool, rectangular (length 13', width 6.5'), heated, inside, illuminated

- **Parking :**

Parking uncovered

- **Advantages :**

Steam bath

- **baby equipment :**

Baby chair

Surroundings & location



Seaside



Culture

Leisure

- **Leisure activities less than 20 km / 12 miles :**

Bathing, snorkelling, scuba diving, sailing, pathway, coastal/forest paths, hiking, boat trips, fishing, deep-sea angling, angling, spear fishing

Surroundings

- **Locality :**

Sandy beach 3mi.
Shingle beach 4.5mi.
Nudist beach 0.62mi.
Cliff 4.5mi.
River 0.62mi.



interior



living room



interior

Interior

- **Receive up to :**

from 2 to 6 person(s)

- **Liveable floor area :**

2,370 Sq.ft

- **Interior layout :**

7 Room(s), 4 bedroom(s), 1 bathroom, 4 shower room, 5 WC, living room 430 Sq.ft., typical style kitchen, dining room, tv room, music room, games room, dressing room, study

- **Sleeps - bed(s) :**

3 double bed(s), 1 king-size bed(s), 3 single bed(s), 1 baby cot(s)

- **Guest facilities :**

Fireplace, T.V., hi-fi system, videoplayer, DVD player, board games, book collection, film collection, t.v points, internet access, high speed internet access, wifi, wardrobe, hair dryer, mosquito nets, mobile cool air fan, central heating

- **Appliances :**

Crockery/cuttlery, kitchen utensils, cafetiere, electric espresso coffee maker, electric kettle, toaster, food processor, gas cooker, electric cooker, electric hobs, oven, refridgerator, freezer, washing machine, vacuum cleaner, iron, ironing board

Exterior

- **Outside accommodation :**

Terrace 194 Sq.ft., balcony 65 Sq.ft., pergola 110 Sq.ft.

- **Outside setting :**

Garden 110 Sq.ft.

- **Outside amenities :**

Arbour



façade

Services

- **Washing :**

Sheets (1 X / per week), Towels (1 X / per week), Linen (1 X / per week), Blanket(s), Quilt(s), Pillows

- **House :**

Cleaning on departure supplement (+£134*), Garden/swimming pool maintenance supplement (1 X / per week +£134*)

For your guidance

- **For your guidance**

Children welcome

Pets accepted under certain conditions (ask the owner)

Mobile telephone network coverage, personal transport advisable

Water : hot/cold

Local voltage supply : 220-240V / 50Hz



façade

Photo album - 1



living room



interior



interior



façade



façade

Photo album - 2



the house



View



View



Outside setting



kitchen



kitchen



kitchen



the house



bedroom



General



the house



bedroom

Photo album - 3



bedroom



the house



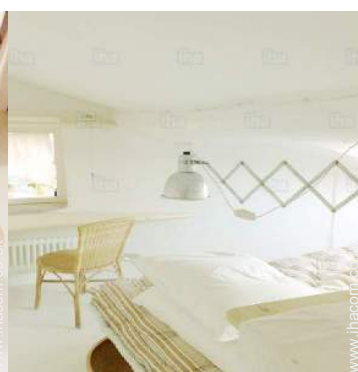
bathroom



the house



Interior layout and facilities



the house



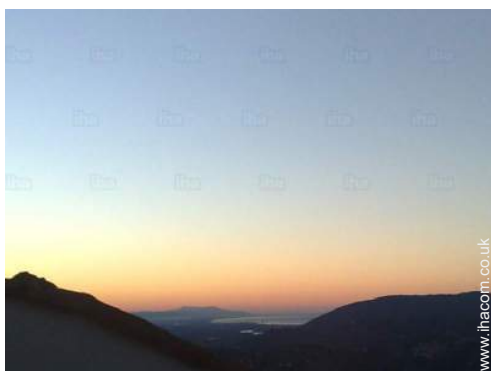
bedroom



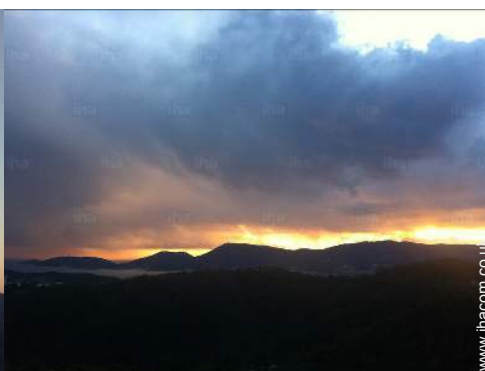
the house



terrace



view from the bedroom

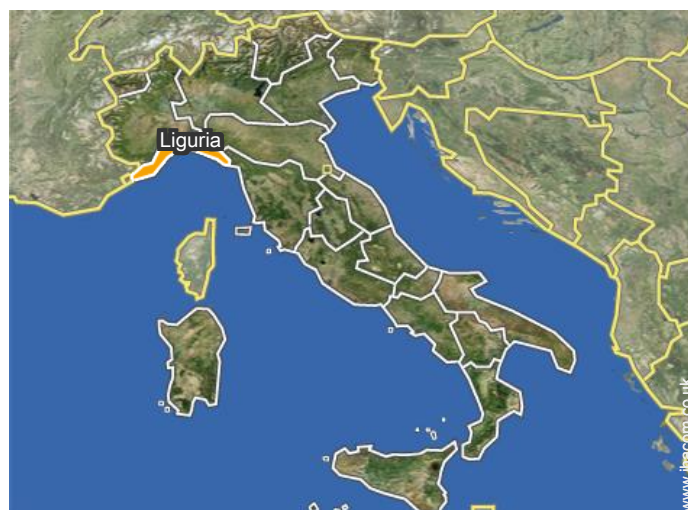
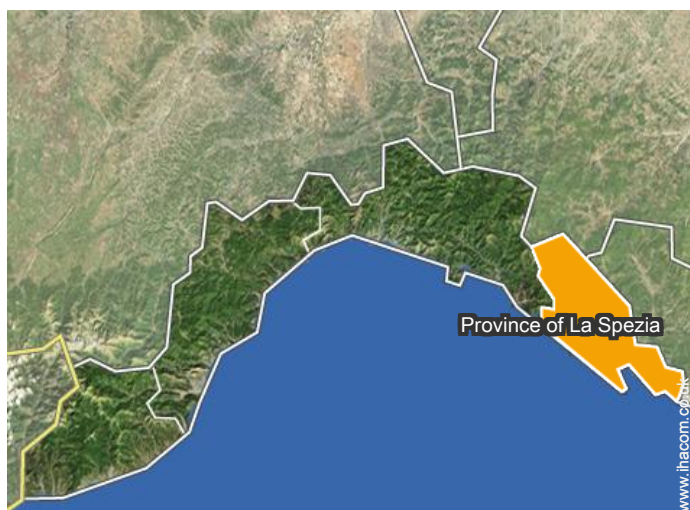


view from the house



view over the sea

Location



Location & Access



GPS coordinates in degrees, minutes, seconds: Latitude 44°8'27"N - Longitude 9°52'51"E ([Dwelling](#))

Address

→ Via Palestro 8
19020 Vezzano Ligure

● [Motorway \(junction\) A15 sa Parma - A12 Genova Roma](#)

→ Vezzano Ligure, Province of La Spezia, Liguria, Italy

→ Distance : 0.62mi.

→ Time : 5'

● [Airport Pisa Galileo Galilei](#)

→ Pisa, Province of Pisa, Tuscany, Italy

→ Time : 45'

● Fiascherino : (4.5mi.)

● Portovenere : (7,5mi.)

● Sarzana : (4.5mi.)

Contact

Spoken languages



Holiday lettings Cinque Terre - Italy "Casa Camilla"

8
[Book now](#)

Availability calendar - from : may 2019

May	W	Th	F	Sa	Su	M	Tu	W	Th	F	Sa	Su	M	Tu	W	Th	F	Sa	Su	M	Tu	W	Th	F							
2019	1	2	3	4	5	6	7	8	9	10	11	12	13	14	15	16	17	18	19	20	21	22	23	24	25	26	27	28	29	30	31
																				-	-	-	-	-	-	-	-	-	-	-	

June	Sa	Su	M	Tu	W	Th	F	Sa	Su	M	Tu	W	Th	F	Sa	Su	M	Tu	W	Th	F	Sa	Su							
2019	1	2	3	4	5	6	7	8	9	10	11	12	13	14	15	16	17	18	19	20	21	22	23	24	25	26	27	28	29	30
	-	-	-	-	-	-	-	-	-	-	-	-	-	-	-	-	-	-	-	-	-	-	-	-	-	-	-	-	-	-

Jul	M	Tu	W	Th	F	Sa	Su	M	Tu	W	Th	F	Sa	Su	M	Tu	W	Th	F	Sa	Su	M	Tu	W	Th	F	Sa	Su	M	Tu	W
2019	1	2	3	4	5	6	7	8	9	10	11	12	13	14	15	16	17	18	19	20	21	22	23	24	25	26	27	28	29	30	31
	-	-	-	-	-	-	-	-	-	-	-	-	-	-	-	-	-	-	-	-	-	-	-	-	-	-	-	-	-	-	-

Aug	Th	F	Sa	Su	M	Tu	W	Th	F	Sa	Su	M	Tu	W	Th	F	Sa	Su	M	Tu	W	Th	F	Sa	Su	M	Tu	W	Th	F	Sa
2019	1	2	3	4	5	6	7	8	9	10	11	12	13	14	15	16	17	18	19	20	21	22	23	24	25	26	27	28	29	30	31
	-	-	-	-	-	-	-	-	-	-	-	-	-	-	-	-	-	-	-	-	-	-	-	-	-	-	-	-	-	-	-

Sep	Su	M	Tu	W	Th	F	Sa	Su	M	Tu	W	Th	F	Sa	Su	M	Tu	W	Th	F	Sa	Su	M							
2019	1	2	3	4	5	6	7	8	9	10	11	12	13	14	15	16	17	18	19	20	21	22	23	24	25	26	27	28	29	30
	-	-	-	-	-	-	-	-	-	-	-	-	-	-	-	-	-	-	-	-	-	-	-	-	-	-	-	-	-	-

Oct	Tu	W	Th	F	Sa	Su	M	Tu	W	Th	F	Sa	Su	M	Tu	W	Th	F	Sa	Su	M	Tu	W	Th	F	Sa	Su	M	Tu	W	Th
2019	1	2	3	4	5	6	7	8	9	10	11	12	13	14	15	16	17	18	19	20	21	22	23	24	25	26	27	28	29	30	31
	-	-	-	-	-	-	-	-	-	-	-	-	-	-	-	-	-	-	-	-	-	-	-	-	-	-	-	-	-	-	-

Nov	F	Sa	Su	M	Tu	W	Th	F	Sa	Su	M	Tu	W	Th	F	Sa	Su	M	Tu	W	Th	F	Sa							
2019	1	2	3	4	5	6	7	8	9	10	11	12	13	14	15	16	17	18	19	20	21	22	23	24	25	26	27	28	29	30
	-	-	-	-	-	-	-	-	-	-	-	-	-	-	-	-	-	-	-	-	-	-	-	-	-	-	-	-	-	-

Dec	Su	M	Tu	W	Th	F	Sa	Su	M	Tu	W	Th	F	Sa	Su	M	Tu	W	Th	F	Sa	Su	M	Tu							
2019	1	2	3	4	5	6	7	8	9	10	11	12	13	14	15	16	17	18	19	20	21	22	23	24	25	26	27	28	29	30	31
	-	-	-	-	-	-	-	-	-	-	-	-	-	-	-	-	-	-	-	-	-	-	-	-	-	-	-	-	-	-	

Jan	W	Th	F	Sa	Su	M	Tu	W	Th	F	Sa	Su	M	Tu	W	Th	F	Sa	Su	M	Tu	W	Th	F							
2020	1	2	3	4	5	6	7	8	9	10	11	12	13	14	15	16	17	18	19	20	21	22	23	24	25	26	27	28	29	30	31
	-	-	-	-	-	-	-	-	-	-	-	-	-	-	-	-	-	-	-	-	-	-	-	-	-	-	-	-	-	-	

Feb	Sa	Su	M	Tu	W	Th	F	Sa	Su	M	Tu	W	Th	F	Sa	Su	M	Tu	W	Th	F	Sa							
2020	1	2	3	4	5	6	7	8	9	10	11	12	13	14	15	16	17	18	19	20	21	22	23	24	25	26	27	28	29
	-	-	-	-	-	-	-	-	-	-	-	-	-	-	-	-	-	-	-	-	-	-	-	-	-	-	-	-	-



Holiday lettings
Province of La Spezia - Liguria
"Casa Camilla"

9

[Book now](#)

Availability calendar - from : february 2020

Mar	Su	M	Tu	W	Th	F	Sa	Su	M	Tu	W	Th	F	Sa	Su	M	Tu	W	Th	F	Sa	Su	M	Tu							
2020	1	2	3	4	5	6	7	8	9	10	11	12	13	14	15	16	17	18	19	20	21	22	23	24	25	26	27	28	29	30	31
-	-	-	-	-	-	-	-	-	-	-	-	-	-	-	-	-	-	-	-	-	-	-	-	-	-	-	-	-	-	-	

Apr	W	Th	F	Sa	Su	M	Tu	W	Th	F	Sa	Su	M	Tu	W	Th	F	Sa	Su	M	Tu	W	Th							
2020	1	2	3	4	5	6	7	8	9	10	11	12	13	14	15	16	17	18	19	20	21	22	23	24	25	26	27	28	29	30
-	-	-	-	-	-	-	-	-	-	-	-	-	-	-	-	-	-	-	-	-	-	-	-	-	-	-	-	-	-	

[Month : Next >>](#)

Rental rates - Village House - from 2 to 6 Person(s)

Rates	Night	Weekend	week	2 weeks	Month
 Low season	-	£534*	£1602*	£2670*	-
 Mid season	-	£712*	£1958*	-	-
 High season	-	-	£2092*	£4005*	-

[Book now](#)

Booking conditions

• Reservation

- Payment made upon reservation : 50% of rental sum
- Payment balance : 10 days before the stay
- Deposit required : £267*

• rentals

- Service charges to be added
- Cleaning charge levy on departure : £134*
- Anticipated supplement for :
 - supplementary bed(s)
 - hammam, sauna
 - firewood

Accepted methods of payment

- International Money Order
- Bank transfer (wire)
- Cash

[▶ Book now](#)

[▶ Contact the owner](#)

Contact directly the property owners

www.ihacom.co.uk

Advert No.

57594

[>> Book now <<](#)

Contact

Spoken languages



* Converted at the rate indicated : €100 = \$116.85 = £89

Advert No. 57594

www.ihacom.co.uk

