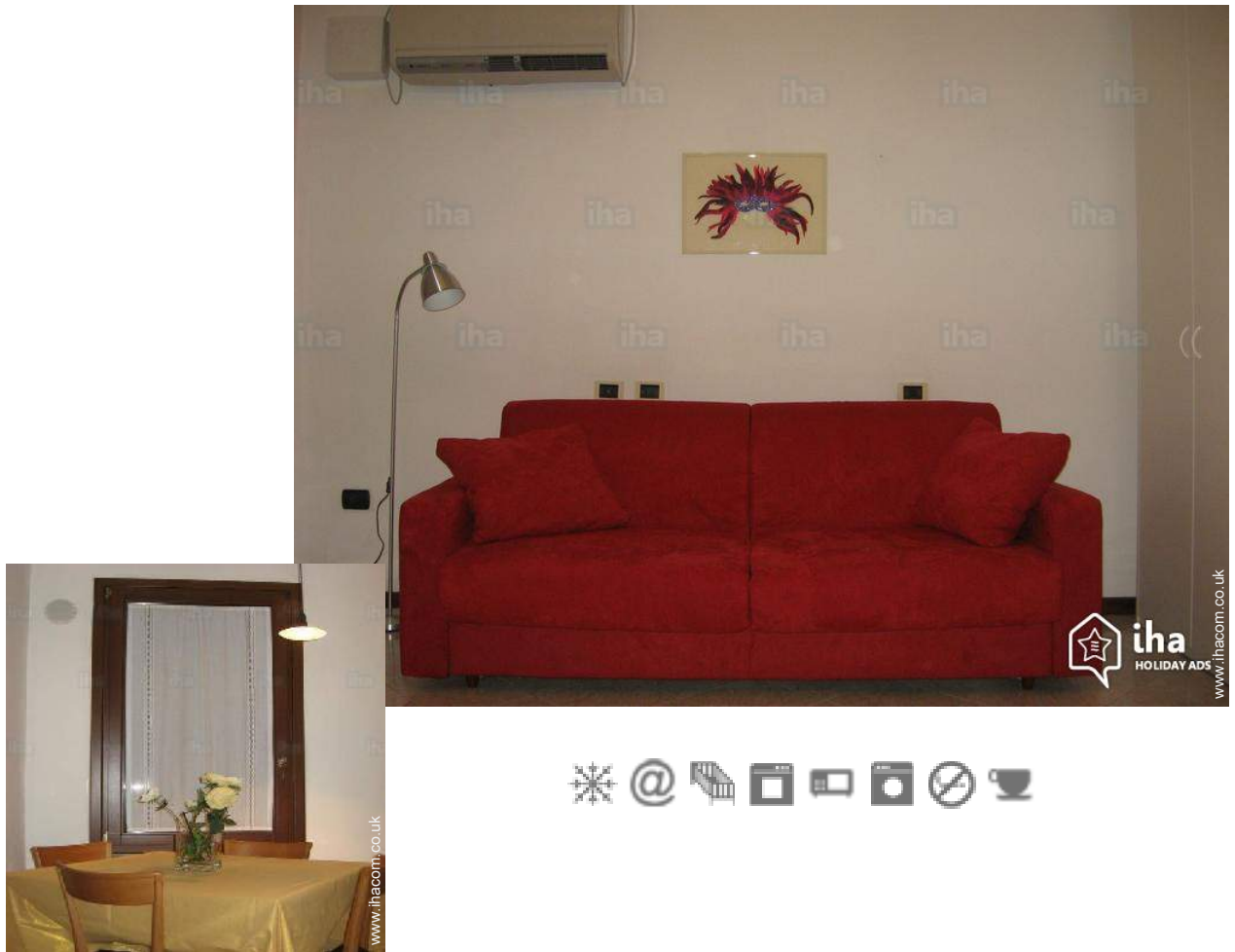


Holiday lettings Venice "Venice annmary"



Flat-Apartments 1st floor, shared entrance, in a(an) Town House 2 floors

Setting : romantic, tranquil

Capacity : from 1 to 3 person(s)

Bedroom(s) : 1

Room(s) : 1

Venice - Province of Venice (VE) - Veneto

Italy

Advert No. 40865

www.ihacom.co.uk



>> HOLIDAY LETTINGS

BOOK DIRECT WITH THE OWNERS

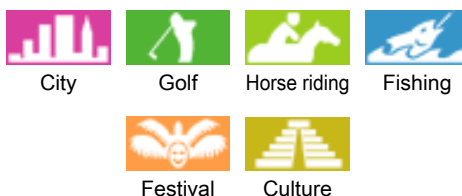
Holiday lettings



Flat-Apartments 1st floor, shared entrance, in a(an) Town House 2 floors

- **Ideal for all age groups, couples with baby**
- **View :** panoramic, courtyard, town, rooftop, pedestrianized street, street/avenue
- **Setting :** romantic, tranquil
- **Exposure :** South-east

Surroundings & location



Leisure

- **Leisure activities less than 20 km / 12 miles :**

Pedalo, snorkelling, scuba diving, windsurfing, sailing, golf, tennis, squash, riding school, horse trekking, rollerblade/rollerskate (circuit), fishing, angling

- **Supervised :**

Sailing school, dive school, tennis school, riding school

- **Attractions and relaxation :**

Bar/pub, discotheque, restaurant, cinema, park and garden, leisure park, exhibition centre, art gallery, historical site, museum, theatre, summer theatre, opera house, festivals, antiques & bric-a-brac, local craftshop, cellar and wine tasting, casino, health farm, beauticians, fitness centre

Surroundings

- **Locality :**

Sea/ocean 1.25mi.
Sandy beach 1.25mi.
Public swimming pool 1.25mi.
Public tennis court 1.5mi.
9 hole golf course 1.5mi.
Watersports centre 0.62mi.

- **Amenities :**

Town centre 0.3mi.
Bus stop / bus station 330'
Bike/mountain bike hire 0.93mi.
Breadshop <165'
Local shops <165'
Supermarket <165'
High class retailers 660'
Hairdressing salon 330'
Post office 660'
Bank <165'
Chemist <165'
Doctor 0.5mi.



Advert No. 40865

www.ihacom.co.uk





Interior

- **Receive up to :**
from 1 to 3 person(s) (3 adults)
- **Liveable floor area :**
485 Sq.ft.
- **Interior layout :**
1 Room(s), 1 bedroom(s), sleeping area, dining room, dining area, cosy nook, tv room
- **Sleeps - bed(s) :**
1 sofa bed(s) 2 pers, 2 foldaway bed(s) 1 pers, 1 baby cot(s), possible extra bed(s)
- **Guest facilities :**
T.V., hi-fi system, DVD player, t.v points, internet access, wifi, wardrobe, cupboard, radio alarmclock, hair dryer, heated towel rail, fully air conditioned, central heating, Curtains, Blinds, Double glazed, entry phone system
- **Appliances :**
Crockery/cutlery, kitchen utensils, cafetiere, toaster, juicer, meat grill, gas cooker, oven, micro-wave oven, extractor hood, refridgerator, freezer, washing machine, vacuum cleaner, iron, ironing board

Services

- **Washing :**
Sheets (1 X / per week), Towels, Linen, Blanket(s), Quilt(s), Pillows
- **House :**
Cleaning on departure supplement (+£45*), Airport transfers supplement (+£54*)
- **Restauration :**
Breakfast

For your guidance

- **For your guidance**
Children welcome
Non smoking rental, mobile telephone network coverage

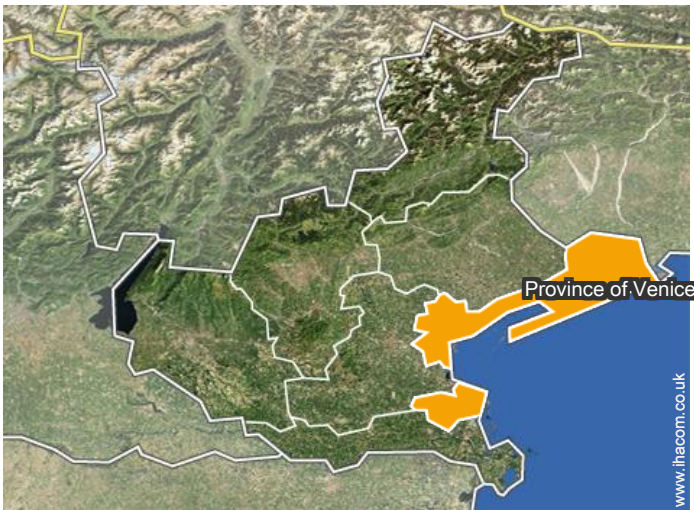
Photo album - 1



Photo album - 2



Location



Location & Access



GPS coordinates in degrees, minutes, seconds: Latitude 45°25'56"N - Longitude 12° 21'11"E (Dwelling)

Address

→ via garibaldi
30100 Venice

- Treviso : (18.5mi.)
- Verona : (62mi.)

• Airport Venice Marco Polo

→ Venice, Province of Venice, Veneto, Italy
→ Distance : 4.5mi.
→ Time : 50'

• Train station Venezia Santa Lucia

→ Venice, Province of Venice, Veneto, Italy
→ Distance : 1.25mi.
→ Time : 30'

• Motorway (junction) ple roma

→ Venice, Province of Venice, Veneto, Italy
→ Distance : 1.25mi.
→ Time : 30'

- Burano : (6mi.)

Contact

Spoken languages



Holiday lettings Venice - Italy "Venice annmary"

7
[Book now](#)

Availability calendar - from : november 2017

Nov	W	Th	F	Sa	Su	M	Tu	W	Th	F	Sa	Su	M	Tu	W	Th	F	Sa	Su	M	Tu	W	Th							
2017	1	2	3	4	5	6	7	8	9	10	11	12	13	14	15	16	17	18	19	20	21	22	23	24	25	26	27	28	29	30
																					-	-	-	-	-	-	-	-	-	-

Dec	F	Sa	Su	M	Tu	W	Th	F	Sa	Su	M	Tu	W	Th	F	Sa	Su	M	Tu	W	Th	F	Sa	Su							
2017	1	2	3	4	5	6	7	8	9	10	11	12	13	14	15	16	17	18	19	20	21	22	23	24	25	26	27	28	29	30	31
	-	-	-	-	-	-	-	-	-	-	-	-	-	-	-	-	-	-	-	-	-	-	-	-	-	-	-	-	-	-	

Jan	M	Tu	W	Th	F	Sa	Su	M	Tu	W	Th	F	Sa	Su	M	Tu	W	Th	F	Sa	Su	M	Tu	W							
2018	1	2	3	4	5	6	7	8	9	10	11	12	13	14	15	16	17	18	19	20	21	22	23	24	25	26	27	28	29	30	31
	-	-	-	-	-	-	-	-	-	-	-	-	-	-	-	-	-	-	-	-	-	-	-	-	-	-	-	-	-	-	

Feb	Th	F	Sa	Su	M	Tu	W	Th	F	Sa	Su	M	Tu	W	Th	F	Sa	Su	M	Tu	W								
2018	1	2	3	4	5	6	7	8	9	10	11	12	13	14	15	16	17	18	19	20	21	22	23	24	25	26	27	28	
	-	-	-	-	-	-	-	-	-	-	-	-	-	-	-	-	-	-	-	-	-	-	-	-	-	-	-	-	-

Mar	Th	F	Sa	Su	M	Tu	W	Th	F	Sa	Su	M	Tu	W	Th	F	Sa	Su	M	Tu	W	Th	F	Sa							
2018	1	2	3	4	5	6	7	8	9	10	11	12	13	14	15	16	17	18	19	20	21	22	23	24	25	26	27	28	29	30	31
	-	-	-	-	-	-	-	-	-	-	-	-	-	-	-	-	-	-	-	-	-	-	-	-	-	-	-	-	-	-	

Apr	Su	M	Tu	W	Th	F	Sa	Su	M	Tu	W	Th	F	Sa	Su	M	Tu	W	Th	F	Sa	Su	M							
2018	1	2	3	4	5	6	7	8	9	10	11	12	13	14	15	16	17	18	19	20	21	22	23	24	25	26	27	28	29	30
	-	-	-	-	-	-	-	-	-	-	-	-	-	-	-	-	-	-	-	-	-	-	-	-	-	-	-	-	-	-

May	Tu	W	Th	F	Sa	Su	M	Tu	W	Th	F	Sa	Su	M	Tu	W	Th	F	Sa	Su	M	Tu	W	Th							
2018	1	2	3	4	5	6	7	8	9	10	11	12	13	14	15	16	17	18	19	20	21	22	23	24	25	26	27	28	29	30	31
	-	-	-	-	-	-	-	-	-	-	-	-	-	-	-	-	-	-	-	-	-	-	-	-	-	-	-	-	-	-	

June	F	Sa	Su	M	Tu	W	Th	F	Sa	Su	M	Tu	W	Th	F	Sa	Su	M	Tu	W	Th	F	Sa							
2018	1	2	3	4	5	6	7	8	9	10	11	12	13	14	15	16	17	18	19	20	21	22	23	24	25	26	27	28	29	30
	-	-	-	-	-	-	-	-	-	-	-	-	-	-	-	-	-	-	-	-	-	-	-	-	-	-	-	-	-	-

Jul	Su	M	Tu	W	Th	F	Sa	Su	M	Tu	W	Th	F	Sa	Su	M	Tu	W	Th	F	Sa	Su	M	Tu							
2018	1	2	3	4	5	6	7	8	9	10	11	12	13	14	15	16	17	18	19	20	21	22	23	24	25	26	27	28	29	30	31
	-	-	-	-	-	-	-	-	-	-	-	-	-	-	-	-	-	-	-	-	-	-	-	-	-	-	-	-	-	-	

Aug	W	Th	F	Sa	Su	M	Tu	W	Th	F	Sa	Su	M	Tu	W	Th	F	Sa	Su	M	Tu	W	Th	F							
2018	1	2	3	4	5	6	7	8	9	10	11	12	13	14	15	16	17	18	19	20	21	22	23	24	25	26	27	28	29	30	31
	-	-	-	-	-	-	-	-	-	-	-	-	-	-	-	-	-	-	-	-	-	-	-	-	-	-	-	-	-	-	



Holiday lettings
Province of Venice - Veneto
"Venice annmary"

8
[Book now](#)




Availability calendar - from : august 2018

Sep	Sa	Su	M	Tu	W	Th	F	Sa	Su	M	Tu	W	Th	F	Sa	Su	M	Tu	W	Th	F	Sa	Su							
2018	1	2	3	4	5	6	7	8	9	10	11	12	13	14	15	16	17	18	19	20	21	22	23	24	25	26	27	28	29	30
-	-	-	-	-	-	-	-	-	-	-	-	-	-	-	-	-	-	-	-	-	-	-	-	-	-	-	-	-	-	

Oct	M	Tu	W	Th	F	Sa	Su	M	Tu	W	Th	F	Sa	Su	M	Tu	W	Th	F	Sa	Su	M	Tu	W							
2018	1	2	3	4	5	6	7	8	9	10	11	12	13	14	15	16	17	18	19	20	21	22	23	24	25	26	27	28	29	30	31
-	-	-	-	-	-	-	-	-	-	-	-	-	-	-	-	-	-	-	-	-	-	-	-	-	-	-	-	-	-	-	

[Month : Next >>](#)

Rental rates - Flat-Apartments - from 1 to 3 Person(s)

Rates	Night	Weekend	week	2 weeks	Month
 Low season	£63* > 3	-	£439*	-	-
 Mid season	£72* > 3	-	£502*	-	-
 High season	£90* > 3	-	-	-	-

> Minimum Night

[Book now](#)

Booking conditions

• Reservation

- Payment made upon reservation : 50% of rental sum
- Payment balance : 1 day before the stay
- Deposit required : £179*

• rentals

- Service charges included
- Cleaning charge levy on departure : £45*

Accepted methods of payment

- International Money Order • Cash

[▶ Book now](#)

[▶ Contact the owner](#)

Contact directly the property owners

www.ihacom.co.uk

Advert No.

40865

[>> Book now <<](#)

Contact

Spoken languages



* Converted at the rate indicated : €100 = \$117.29 = £89.59

Advert No. 40865

www.ihacom.co.uk

