

# Holiday lettings Trappeto "Belvedere"

Holiday home in Trappeto near Palermo, a few steps from the seaside and of all amenities and entertainment in a charming place rich in history.



Typical House, detached, single storey, separate entrance, in a(an) Housing estate

Setting : enchanting, seaside

Capacity : from 1 to 4 person(s)

Bedroom(s) : 2

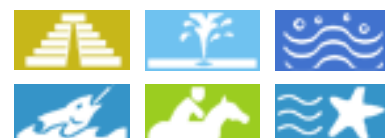
Room(s) : 3

Trappeto - Province of Palermo (PA) - Sicily

Italy

Advert No. 10918

www.ihacom.co.uk



>> HOLIDAY LETTINGS

BOOK DIRECT WITH THE OWNERS

## Holiday lettings



Typical House, detached, single storey, separate entrance, in a(an) Housing estate

- **Ideal for family, group**
- **View :** sea/ocean, garden/park, village, fantastic sunset, nightlights
- **Setting :** enchanting, seaside
- **Exposure :** West

" Rent apartment graceful and full Trappeto PA, a charming fishing village overlooking the magnificent Gulf of Castellammare, one of the most beautiful places in Sicily. Starting point ideal for exploring Sicily or enjoy a crystal clear sea. It is located only 250 metres from the promenade of the seaside where take place the night life and the various summer festivals; all shops and services are within walking distance, and you need therefore not the car to move. The apartment can accommodate up to 7 people and has 3 bedrooms and a large kitchen. Parking always available in front of the House. two bicycles at your disposal, free wi - Fi. With a little extra, I can provide bed linen and towels. I guarantee reliability, cleanliness, and friendliness "

## Assets

- **Parking :**  
Parking uncovered : 14 reserved bay.
- **baby equipment :**  
Playpen

## Surroundings & location



" Trappeto, in the province of Palermo, is a charming fishing village overlooking the magnificent Gulf of Castellammare, one of most beautiful places in Sicily. Starting point ideal for exploring Sicily, situated in a strategic point between the provinces of Palermo and Trapani or to enjoy crystal-clear sea or water sports. "

### Leisure

- **Leisure activities less than 20 km / 12 miles :**

Bathing, pedalo, snorkelling, scuba diving, banana boat, water skiing, jet ski, surfing, windsurfing, sailing, kite surfing, canoeing, tennis, riding school, coastal/forest paths, hiking, rock climbing, mountain bike (path), kite flying, boat trips, horse trekking, mini-golf, go-karting, ten-pin bowling, paintball, fishing, deep-sea angling, angling, spear fishing, pétanque pitch

- **Supervised :**

Sailing school, dive school, riding school

- **Attractions and relaxation :**

Bar/pub, discotheque, restaurant, cinema, open air summer cinema, karaoke, park and garden, leisure park, sea world, nature reserve, historical site, museum, theatre, local craftshop, cellar and wine tasting, racecourse, thermal baths, thalassotherapy centre, health farm, beauticians, fitness centre

### Surroundings

- **Locality :**

Sea/ocean 990'  
Sandy beach 0.5mi.  
Shingle beach 990'  
Rocky beach 990'  
Creek 0.62mi.  
Windsurfing spots 0.3mi.  
Surfing spots 990'  
Watersports centre 990'  
Cliff 0.93mi.  
Slipway 990'  
Via ferrata-alpinism 990'

- **Amenities :**

Village centre 330'  
Town centre 330'  
Bus stop / bus station 330'  
Scooter/motorbike hire 0.93mi.  
Car rental 0.93mi.  
Boat rental 990'  
Scuba diving material hire 0.93mi.  
Breadshop <165'

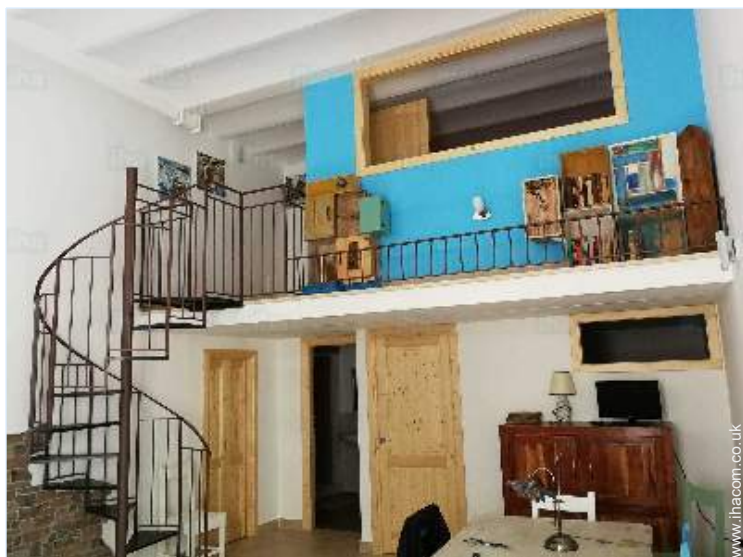
Local shops 330'  
Supermarket 330'  
Hairdressing salon 660'  
Post office 330'  
Bank 330'  
Chemist 660'  
Dispensing clinic 0.3mi.



view from the kitchen



kitchen



living room



living room

### Interior

- **Receive up to :**  
from 1 to 4 person(s) (4 adults)
- **Liveable floor area :**  
750 Sq.ft.
- **Interior layout :**  
3 Room(s), 2 bedroom(s), 2 bathroom, 1 shower room, 2 WC, living room 270 Sq.ft., american style kitchen, dining room, tv room, laundry room
- **Sleeps - bed(s) :**  
1 double bed(s), sofa bed(s) 2 pers, 2 single bed(s), bunk beds, sofa bed(s) 1 pers, 1 possible extra bed(s)
- **Guest facilities :**  
T.V., hi-fi system, t.v points, wardrobe, Hanging wardrobe, radio alarmclock, hair dryer, mobile cool air fan, electric heating, Curtains, Double glazed, burgular alarm
- **Appliances :**  
Crockery/cuttlery, kitchen utensils, cafetiere, juicer, gas cooker, oven, extractor hood, refridgerator, freezer, washing machine, vacuum cleaner, iron, ironing board

### Services

- **Washing :**  
Sheets supplement (1 X / per week +£18\*), Towels, Linen, Blanket (s), Quilt(s), Pillows
- **House :**  
Cleaning, Cleaning on departure supplement (+£27\*), Parking, Airport transfers supplement (+£27\*)

### For your guidance

- **For your guidance**  
Children welcome  
No pet allowed  
Mobile telephone network coverage, personal transport advisable  
Water : hot/cold  
Local voltage supply : 220V / 60Hz  
Electricity supply : mains

Photo album - 1



kitchen



view from the kitchen



living room



living room



large bedroom

Photo album - 2



child's room

Interior layout

WC



WC

WC

bathroom



Interior layout

Seaside

Seaside



Seaside

sea view

sandy beach

Photo album - 3



General



General



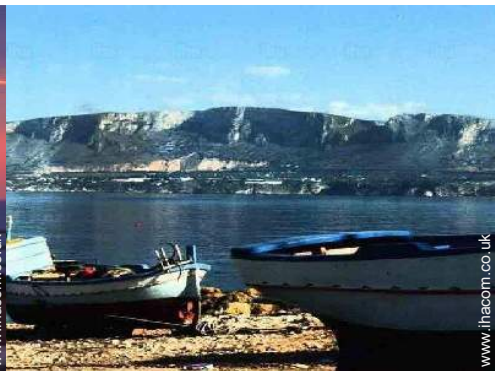
Seaside



Seaside



Seaside



Seaside



Seaside



Seaside



Seaside



panorama



Seaside



Seaside

Route map



Location & Access

" The holiday house is located in a central area, close to all amenities, shops and promenade of the seaside where take place the night life and the many summer festivals. "



GPS coordinates in degrees, minutes, seconds: Latitude 38° 4'5"N - Longitude 13°2'24"E (Dwelling)

Address

→ piazza Pitrè 58  
90040 Trappeto

- Palermo : (23,6mi.)
- Trapani : (37,3mi.)
- Castellammare del Golfo : (12.5mi.)

Contact

Spoken languages



Location





# Holiday lettings Trappeto - Italy "Belvedere"

## Availability calendar - from : may 2019

May	W	Th	F	Sa	Su	M	Tu	W	Th	F	Sa	Su	M	Tu	W	Th	F	Sa	Su	M	Tu	W	Th	F							
2019	1	2	3	4	5	6	7	8	9	10	11	12	13	14	15	16	17	18	19	20	21	22	23	24	25	26	27	28	29	30	31
																										-	-	-	-	-	-

June	Sa	Su	M	Tu	W	Th	F	Sa	Su	M	Tu	W	Th	F	Sa	Su	M	Tu	W	Th	F	Sa	Su							
2019	1	2	3	4	5	6	7	8	9	10	11	12	13	14	15	16	17	18	19	20	21	22	23	24	25	26	27	28	29	30
	-	-	-	-	-	-	-	-	-	-	-	-	-	-	-	-	-	-	-	-	-	-	-	-	-	-	-	-	-	-

Jul	M	Tu	W	Th	F	Sa	Su	M	Tu	W	Th	F	Sa	Su	M	Tu	W	Th	F	Sa	Su	M	Tu	W	Th	F	Sa	Su	M	Tu	W
2019	1	2	3	4	5	6	7	8	9	10	11	12	13	14	15	16	17	18	19	20	21	22	23	24	25	26	27	28	29	30	31
	-	-	-	-	-	-	-	-	-	-	-	-	-	-	-	-	-	-	-	-	-	-	-	-	-	-	-	-	-	-	-

Aug	Th	F	Sa	Su	M	Tu	W	Th	F	Sa	Su	M	Tu	W	Th	F	Sa	Su	M	Tu	W	Th	F	Sa	Su	M	Tu	W	Th	F	Sa
2019	1	2	3	4	5	6	7	8	9	10	11	12	13	14	15	16	17	18	19	20	21	22	23	24	25	26	27	28	29	30	31
	-	-	-	-	-	-	-	-	-	-	-	-	-	-	-	-	-	-	-	-	-	-	-	-	-	-	-	-	-	-	-

Sep	Su	M	Tu	W	Th	F	Sa	Su	M	Tu	W	Th	F	Sa	Su	M	Tu	W	Th	F	Sa	Su	M							
2019	1	2	3	4	5	6	7	8	9	10	11	12	13	14	15	16	17	18	19	20	21	22	23	24	25	26	27	28	29	30
	-	-	-	-	-	-	-	-	-	-	-	-	-	-	-	-	-	-	-	-	-	-	-	-	-	-	-	-	-	-

Oct	Tu	W	Th	F	Sa	Su	M	Tu	W	Th	F	Sa	Su	M	Tu	W	Th	F	Sa	Su	M	Tu	W	Th	F	Sa	Su	M	Tu	W	Th
2019	1	2	3	4	5	6	7	8	9	10	11	12	13	14	15	16	17	18	19	20	21	22	23	24	25	26	27	28	29	30	31
	-	-	-	-	-	-	-	-	-	-	-	-	-	-	-	-	-	-	-	-	-	-	-	-	-	-	-	-	-	-	-

Nov	F	Sa	Su	M	Tu	W	Th	F	Sa	Su	M	Tu	W	Th	F	Sa	Su	M	Tu	W	Th	F	Sa							
2019	1	2	3	4	5	6	7	8	9	10	11	12	13	14	15	16	17	18	19	20	21	22	23	24	25	26	27	28	29	30
	-	-	-	-	-	-	-	-	-	-	-	-	-	-	-	-	-	-	-	-	-	-	-	-	-	-	-	-	-	-

Dec	Su	M	Tu	W	Th	F	Sa	Su	M	Tu	W	Th	F	Sa	Su	M	Tu	W	Th	F	Sa	Su	M	Tu	W	Th	F	Sa	Su	M	Tu
2019	1	2	3	4	5	6	7	8	9	10	11	12	13	14	15	16	17	18	19	20	21	22	23	24	25	26	27	28	29	30	31
	-	-	-	-	-	-	-	-	-	-	-	-	-	-	-	-	-	-	-	-	-	-	-	-	-	-	-	-	-	-	-

Jan	W	Th	F	Sa	Su	M	Tu	W	Th	F	Sa	Su	M	Tu	W	Th	F	Sa	Su	M	Tu	W	Th	F	Sa	Su	M	Tu	W	Th	F
2020	1	2	3	4	5	6	7	8	9	10	11	12	13	14	15	16	17	18	19	20	21	22	23	24	25	26	27	28	29	30	31
	-	-	-	-	-	-	-	-	-	-	-	-	-	-	-	-	-	-	-	-	-	-	-	-	-	-	-	-	-	-	-

Feb	Sa	Su	M	Tu	W	Th	F	Sa	Su	M	Tu	W	Th	F	Sa	Su	M	Tu	W	Th	F	Sa							
2020	1	2	3	4	5	6	7	8	9	10	11	12	13	14	15	16	17	18	19	20	21	22	23	24	25	26	27	28	29
	-	-	-	-	-	-	-	-	-	-	-	-	-	-	-	-	-	-	-	-	-	-	-	-	-	-	-	-	-



# Holiday lettings Sicily - Trappeto "Belvedere"

10  
[Book now](#)

## Availability calendar - from : february 2020

Mar	Su	M	Tu	W	Th	F	Sa	Su	M	Tu	W	Th	F	Sa	Su	M	Tu	W	Th	F	Sa	Su	M	Tu							
2020	1	2	3	4	5	6	7	8	9	10	11	12	13	14	15	16	17	18	19	20	21	22	23	24	25	26	27	28	29	30	31
-	-	-	-	-	-	-	-	-	-	-	-	-	-	-	-	-	-	-	-	-	-	-	-	-	-	-	-	-	-	-	

Apr	W	Th	F	Sa	Su	M	Tu	W	Th	F	Sa	Su	M	Tu	W	Th	F	Sa	Su	M	Tu	W	Th							
2020	1	2	3	4	5	6	7	8	9	10	11	12	13	14	15	16	17	18	19	20	21	22	23	24	25	26	27	28	29	30
-	-	-	-	-	-	-	-	-	-	-	-	-	-	-	-	-	-	-	-	-	-	-	-	-	-	-	-	-	-	

[Month : Next >>](#)

## Rental rates - Typical House - from 1 to 4 Person(s)

Rates	Night	Weekend	week	2 weeks	Month
 Low season	-	£89*	£223*	£401*	-
 Mid season	-	£116*	£312*	£579*	-
 High season	-	£142*	£401*	£846*	-
 Festive specials	-	-	-	£579*	-
 Promotional period	-	-	£223*	£427*	-

[Book now](#)

### Booking conditions

#### • Reservation

- Payment made upon reservation : £134\*
- Payment balance :  
on handing over the keys
- Deposit required : £89\*

#### • rentals

- Service charges included
- Day tax included
- Cleaning charge levy on departure : £27\*
- Anticipated supplement for :  
- supplementary bed(s)

[▶ Book now](#)

[▶ Contact the owner](#)

### Accepted methods of payment

- Bank transfer (wire)
- Bankers draft
- Cash

Contact directly the property owners

[www.ihacom.co.uk](http://www.ihacom.co.uk)

Advert No.

10918

[>> Book now <<](#)

### Contact

Spoken languages



\* Converted at the rate indicated : €100 = \$116.85 = £89

Advert No. 10918

[www.ihacom.co.uk](http://www.ihacom.co.uk)



[>> HOLIDAY LETTINGS](#)

[BOOK DIRECT WITH THE OWNERS](#)