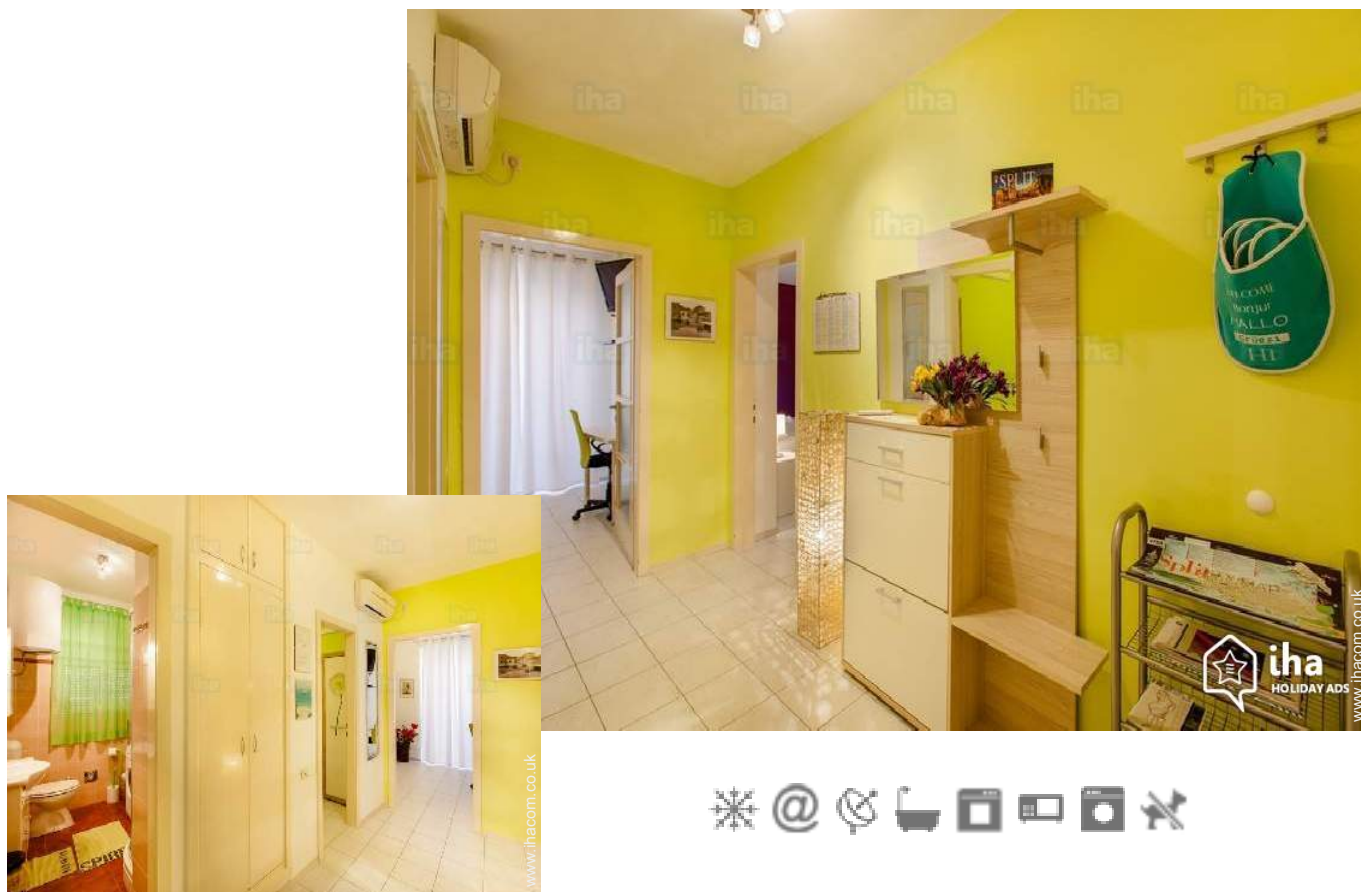


Holiday lettings Split Flat-Apartments

Apartment in city centre equipped with WI-FI Internet, air conditioning and SAT TV. Great location close to everything!



Flat-Apartments ground floor, separate entrance, in a(an) Estate 1 floor

Setting : city, pleasant

Capacity : from 1 to 4 person(s)

Bedroom(s) : 2

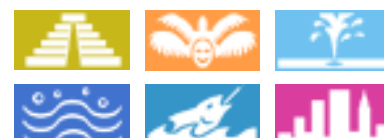
Split - Split-Dalmatia County - Dalmatia

Croatia

Reservation : +385 (0) 919029311 (Croatia)

Advert No. 702

www.ihacom.co.uk



>> HOLIDAY LETTINGS

BOOK DIRECT WITH THE OWNERS

Holiday lettings



Flat-Apartments ground floor, separate entrance, in a(an) Estate 1 floor

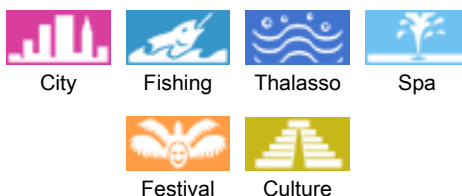
- Ideal for family, couples
- Setting : city, pleasant

" Comfortable apartment for max 4 people in a great position, close to all major city attractions and to the port, bus and train station. The apartment has 2 bedrooms, spacious kitchen, toilette and a small balcony. The accommodation is fully equipped with air conditioning, wireless Internet connection (free and unlimited), satellite TVs, washing machine, stove, oven, fridge and freezer. The apartment has two bedrooms; the larger one equipped with a double bed and additional sofa/bed as well as with a satellite TV and large wardrobe meanwhile the smaller one has one single bed and a wardrobe. In the kitchen there are also 2 tables, one for the meals and the other one like a working table where you can put your computer for example. The small balcony with mini table and 2 chairs is suitable for relax and for smoking as it is the only place where smoking is allowed. The bathroom has the shower, toilette and washing machine. "



the flat

Surroundings & location



" The apartment is located only 100 meters from the Split old town and it's major attractions, one of which is certainly the 1.700 years old Diocletian's Palace, a unique world heritage site dating back to the Roman age and protected by UNESCO. Diocletian's Palace is today the only roman palace in the World still preserved and inhabited therefore the must see during your visit in Split and Croatia. The port of Split, the bus and the train station are also very close to the apartment, approximately 200-300 meters or less than 3-4 minutes by foot. "

Leisure

- Leisure activities less than 20 km / 12 miles :

Bathing, pedalo, snorkelling, canyoning, rafting, golf, tennis, hiking, rock climbing, boat trips, go-karting, basketball, volleyball, fishing

- Attractions and relaxation :

Bar/pub, discotheque, restaurant, cinema, open air summer cinema, park and garden, sea world, art gallery, historical site, museum, theatre, summer theatre, festivals, local craftshop, casino, thalassotherapy centre, health farm, beauticians, fitness centre

Surroundings

- Locality :

Sea/ocean 990'
Sandy beach 0.3mi.
Shingle beach 0.3mi.
Rocky beach 0.3mi.
Nudist beach 1.85mi.
Public tennis court 0.5mi.
Watersports centre 1.25mi.
Waterfall >31mi.
River 12.5mi.
Forest 0.93mi.
Marina 0.5mi.

- Amenities :

Village centre 330'
Town centre <165'
Bus stop / bus station 330'
Car rental 660'
Breadshop <165'
Local shops <165'
Supermarket 330'
Hairdressing salon <165'
Post office 660'
Bank <165'
Cash point <165'
Chemist 330'

Hospital 0.93mi.



kitchen



kitchen



kitchen



master bedroom

Interior

- **Receive up to :**
from 1 to 4 person(s)
- **Liveable floor area :**
530 Sq.ft.
- **Interior layout :**
2 bedroom(s), 1 bathroom, sitting room < 100 Sq.ft, separate kitchen, dining area, loggia
- **Sleeps - bed(s) :**
1 double bed(s), 1 super king-size bed(s), 1 sofa bed(s) 1 pers
- **Guest facilities :**
T.V., cable/satelite, high speed internet access, wifi, wardrobe, Hanging wardrobe, hair dryer, fully air conditioned
- **Appliances :**
Crockery/cuttlery, kitchen utensils, cafetiere, electric kettle, toaster, juicer, electric cooker, electric hobs, oven, micro-wave oven, extractor hood, refridgerator, freezer, washing machine, vacuum cleaner, iron, ironing board

Services

- **Washing :**
Sheets, Towels, Linen, Blanket(s), Pillows
- **House :**
Cleaning on departure, Airport transfers supplement (+£32*)
- **Personnel :**
Guide supplement

For your guidance

- **For your guidance**
Children welcome
No pet allowed
Water : hot/cold

Photo album - 1



the flat



kitchen



kitchen



kitchen



master bedroom

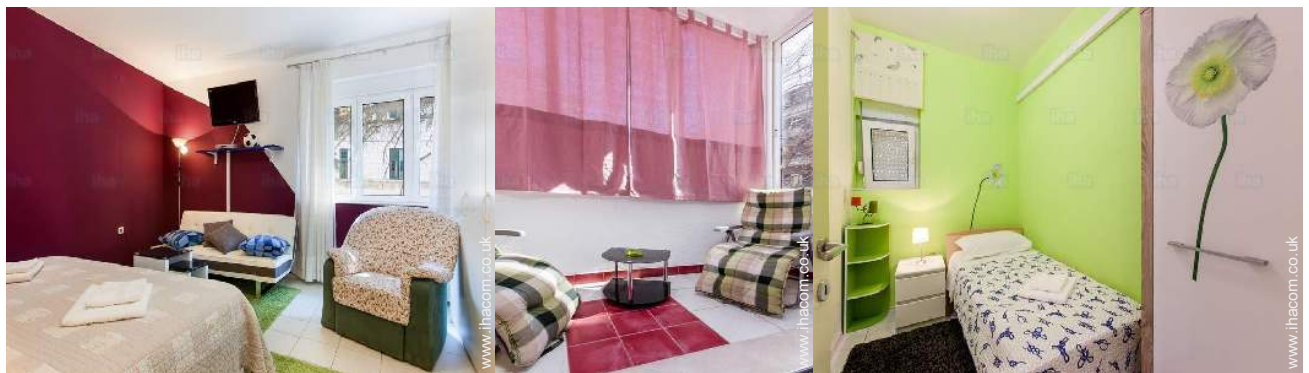
Photo album - 2



master bedroom

master bedroom

master bedroom



master bedroom

loggia

small bedroom



bathroom

the flat

the flat



interior

kitchen

kitchen

Photo album - 3



interior

interior

loggia



master bedroom



master bedroom



super king-size bed(s)



double bed(s)



interior



bathroom



bathroom

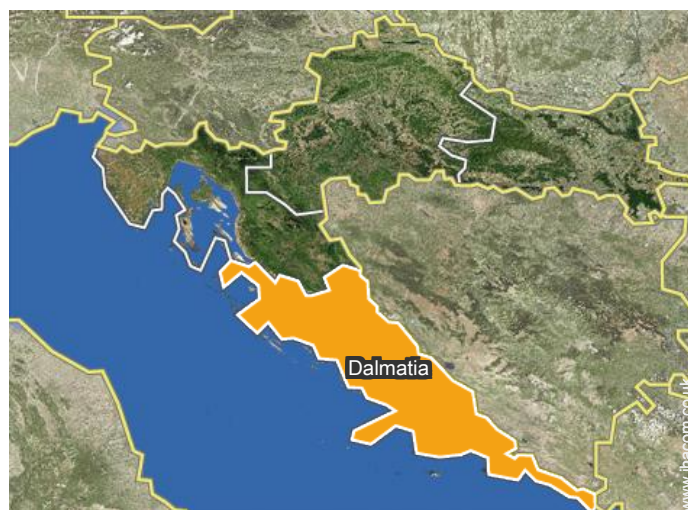


Kitchen Area




Kitchen Area

Location



Location & Access

" The location is ideal for everybody: the apartment is in the city centre and close to all attractions, bars, restaurants, stores, groceries and other facilities. Free parking places are available in the street and in the surrounding area. On payment parking less than 100 meters far away. "

 GPS coordinates in degrees, minutes, seconds: Latitude 43°30'35"N - Longitude 16°26'38"E ([Dwelling](#))

Address

→ Kneza Višeslava 1
21000 Split

• Airport Split Kaštela Resnik

→ Split, Split-Dalmatia County, Dalmatia, Croatia
→ Distance : 15.5mi.
→ Time : 30'

• Sea port Split

→ Split, Split-Dalmatia County, Dalmatia, Croatia
→ Distance : 990'
→ Time : 5'

• Coach station Split

→ Split, Split-Dalmatia County, Dalmatia, Croatia
→ Distance : 990'
→ Time : 5'

• Trogir : (17,5mi.)

• Omiš : (15.5mi.)

Contact

Spoken languages



Holiday lettings Split-Dalmatia County - Dalmatia Flat-Apartments

Availability calendar - from : september 2019

| Sep | Su | M | Tu | W | Th | F | Sa | Su | M | Tu | W | Th | F | Sa | Su | M | Tu | W | Th | F | Sa | Su | M | | | | | | | |
|------|----|---|----|---|----|---|----|----|---|----|----|----|----|----|----|----|----|----|----|----|----|----|----|----|----|----|----|----|----|----|
| 2019 | 1 | 2 | 3 | 4 | 5 | 6 | 7 | 8 | 9 | 10 | 11 | 12 | 13 | 14 | 15 | 16 | 17 | 18 | 19 | 20 | 21 | 22 | 23 | 24 | 25 | 26 | 27 | 28 | 29 | 30 |
| | | | | | | | | | | | | | | | | - | - | - | - | - | - | - | - | - | - | - | - | - | - | |

| Oct | Tu | W | Th | F | Sa | Su | M | Tu | W | Th | F | Sa | Su | M | Tu | W | Th | F | Sa | Su | M | Tu | W | Th | | | | | | | |
|------|----|---|----|---|----|----|---|----|---|----|----|----|----|----|----|----|----|----|----|----|----|----|----|----|----|----|----|----|----|----|----|
| 2019 | 1 | 2 | 3 | 4 | 5 | 6 | 7 | 8 | 9 | 10 | 11 | 12 | 13 | 14 | 15 | 16 | 17 | 18 | 19 | 20 | 21 | 22 | 23 | 24 | 25 | 26 | 27 | 28 | 29 | 30 | 31 |
| | - | - | - | - | - | - | - | - | - | - | - | - | - | - | - | - | - | - | - | - | - | - | - | - | - | - | - | - | - | - | |

| Nov | F | Sa | Su | M | Tu | W | Th | F | Sa | Su | M | Tu | W | Th | F | Sa | Su | M | Tu | W | Th | F | Sa | | | | | | | |
|------|---|----|----|---|----|---|----|---|----|----|----|----|----|----|----|----|----|----|----|----|----|----|----|----|----|----|----|----|----|----|
| 2019 | 1 | 2 | 3 | 4 | 5 | 6 | 7 | 8 | 9 | 10 | 11 | 12 | 13 | 14 | 15 | 16 | 17 | 18 | 19 | 20 | 21 | 22 | 23 | 24 | 25 | 26 | 27 | 28 | 29 | 30 |
| | - | - | - | - | - | - | - | - | - | - | - | - | - | - | - | - | - | - | - | - | - | - | - | - | - | - | - | - | - | - |

| Dec | Su | M | Tu | W | Th | F | Sa | Su | M | Tu | W | Th | F | Sa | Su | M | Tu | W | Th | F | Sa | Su | M | Tu | | | | | | | |
|------|----|---|----|---|----|---|----|----|---|----|----|----|----|----|----|----|----|----|----|----|----|----|----|----|----|----|----|----|----|----|----|
| 2019 | 1 | 2 | 3 | 4 | 5 | 6 | 7 | 8 | 9 | 10 | 11 | 12 | 13 | 14 | 15 | 16 | 17 | 18 | 19 | 20 | 21 | 22 | 23 | 24 | 25 | 26 | 27 | 28 | 29 | 30 | 31 |
| | - | - | - | - | - | - | - | - | - | - | - | - | - | - | - | - | - | - | - | - | - | - | - | - | - | - | - | - | - | - | |

| Jan | W | Th | F | Sa | Su | M | Tu | W | Th | F | Sa | Su | M | Tu | W | Th | F | Sa | Su | M | Tu | W | Th | F | | | | | | | |
|------|---|----|---|----|----|---|----|---|----|----|----|----|----|----|----|----|----|----|----|----|----|----|----|----|----|----|----|----|----|----|----|
| 2020 | 1 | 2 | 3 | 4 | 5 | 6 | 7 | 8 | 9 | 10 | 11 | 12 | 13 | 14 | 15 | 16 | 17 | 18 | 19 | 20 | 21 | 22 | 23 | 24 | 25 | 26 | 27 | 28 | 29 | 30 | 31 |
| | - | - | - | - | - | - | - | - | - | - | - | - | - | - | - | - | - | - | - | - | - | - | - | - | - | - | - | - | - | - | |

| Feb | Sa | Su | M | Tu | W | Th | F | Sa | Su | M | Tu | W | Th | F | Sa | Su | M | Tu | W | Th | F | Sa | | | | | | | |
|------|----|----|---|----|---|----|---|----|----|----|----|----|----|----|----|----|----|----|----|----|----|----|----|----|----|----|----|----|----|
| 2020 | 1 | 2 | 3 | 4 | 5 | 6 | 7 | 8 | 9 | 10 | 11 | 12 | 13 | 14 | 15 | 16 | 17 | 18 | 19 | 20 | 21 | 22 | 23 | 24 | 25 | 26 | 27 | 28 | 29 |
| | - | - | - | - | - | - | - | - | - | - | - | - | - | - | - | - | - | - | - | - | - | - | - | - | - | - | - | - | - |

| Mar | Su | M | Tu | W | Th | F | Sa | Su | M | Tu | W | Th | F | Sa | Su | M | Tu | W | Th | F | Sa | Su | M | Tu | | | | | | | |
|------|----|---|----|---|----|---|----|----|---|----|----|----|----|----|----|----|----|----|----|----|----|----|----|----|----|----|----|----|----|----|----|
| 2020 | 1 | 2 | 3 | 4 | 5 | 6 | 7 | 8 | 9 | 10 | 11 | 12 | 13 | 14 | 15 | 16 | 17 | 18 | 19 | 20 | 21 | 22 | 23 | 24 | 25 | 26 | 27 | 28 | 29 | 30 | 31 |
| | - | - | - | - | - | - | - | - | - | - | - | - | - | - | - | - | - | - | - | - | - | - | - | - | - | - | - | - | - | - | |

| Apr | W | Th | F | Sa | Su | M | Tu | W | Th | F | Sa | Su | M | Tu | W | Th | F | Sa | Su | M | Tu | W | Th | | | | | | | |
|------|---|----|---|----|----|---|----|---|----|----|----|----|----|----|----|----|----|----|----|----|----|----|----|----|----|----|----|----|----|----|
| 2020 | 1 | 2 | 3 | 4 | 5 | 6 | 7 | 8 | 9 | 10 | 11 | 12 | 13 | 14 | 15 | 16 | 17 | 18 | 19 | 20 | 21 | 22 | 23 | 24 | 25 | 26 | 27 | 28 | 29 | 30 |
| | - | - | - | - | - | - | - | - | - | - | - | - | - | - | - | - | - | - | - | - | - | - | - | - | - | - | - | - | - | - |

| May | F | Sa | Su | M | Tu | W | Th | F | Sa | Su | M | Tu | W | Th | F | Sa | Su | M | Tu | W | Th | F | Sa | Su | | | | | | | |
|------|---|----|----|---|----|---|----|---|----|----|----|----|----|----|----|----|----|----|----|----|----|----|----|----|----|----|----|----|----|----|----|
| 2020 | 1 | 2 | 3 | 4 | 5 | 6 | 7 | 8 | 9 | 10 | 11 | 12 | 13 | 14 | 15 | 16 | 17 | 18 | 19 | 20 | 21 | 22 | 23 | 24 | 25 | 26 | 27 | 28 | 29 | 30 | 31 |
| | - | - | - | - | - | - | - | - | - | - | - | - | - | - | - | - | - | - | - | - | - | - | - | - | - | - | - | - | - | - | |

| June | M | Tu | W | Th | F | Sa | Su | M | Tu | W | Th | F | Sa | Su | M | Tu | W | Th | F | Sa | Su | M | Tu | | | | | | | |
|------|---|----|---|----|---|----|----|---|----|----|----|----|----|----|----|----|----|----|----|----|----|----|----|----|----|----|----|----|----|----|
| 2020 | 1 | 2 | 3 | 4 | 5 | 6 | 7 | 8 | 9 | 10 | 11 | 12 | 13 | 14 | 15 | 16 | 17 | 18 | 19 | 20 | 21 | 22 | 23 | 24 | 25 | 26 | 27 | 28 | 29 | 30 |
| | - | - | - | - | - | - | - | - | - | - | - | - | - | - | - | - | - | - | - | - | - | - | - | - | - | - | - | - | - | - |







Availability calendar - from : june 2020

| Jul | W | Th | F | Sa | Su | M | Tu | W | Th | F | Sa | Su | M | Tu | W | Th | F | Sa | Su | M | Tu | W | Th | F | | | | | | | |
|------|---|----|---|----|----|---|----|---|----|----|----|----|----|----|----|----|----|----|----|----|----|----|----|----|----|----|----|----|----|----|----|
| 2020 | 1 | 2 | 3 | 4 | 5 | 6 | 7 | 8 | 9 | 10 | 11 | 12 | 13 | 14 | 15 | 16 | 17 | 18 | 19 | 20 | 21 | 22 | 23 | 24 | 25 | 26 | 27 | 28 | 29 | 30 | 31 |
| - | - | - | - | - | - | - | - | - | - | - | - | - | - | - | - | - | - | - | - | - | - | - | - | - | - | - | - | - | - | - | |

| Aug | Sa | Su | M | Tu | W | Th | F | Sa | Su | M | Tu | W | Th | F | Sa | Su | M | Tu | W | Th | F | Sa | Su | M | | | | | | | |
|------|----|----|---|----|---|----|---|----|----|----|----|----|----|----|----|----|----|----|----|----|----|----|----|----|----|----|----|----|----|----|----|
| 2020 | 1 | 2 | 3 | 4 | 5 | 6 | 7 | 8 | 9 | 10 | 11 | 12 | 13 | 14 | 15 | 16 | 17 | 18 | 19 | 20 | 21 | 22 | 23 | 24 | 25 | 26 | 27 | 28 | 29 | 30 | 31 |
| - | - | - | - | - | - | - | - | - | - | - | - | - | - | - | - | - | - | - | - | - | - | - | - | - | - | - | - | - | - | - | |

[Month : Next >>](#)

Rental rates - Flat-Apartments - from 1 to 4 Person(s)

| Rates | Night | Weekend | week | 2 weeks | Month |
|--|----------------|---------|--------|---------|-------|
|  Low season | £46* > 3 ↓ | £46* | £319* | - | - |
|  Mid season | £82* > 3 ↓ | £82* | £546* | £1092* | - |
|  High season | £118* > 3 ↓ | £118* | £764* | £1456* | - |
|  Festive specials | £228* > 3 ↓ | £228* | £1274* | £1820* | - |

↓ Reducing rates > Minimum Night

[Book now](#)

Booking conditions

• Reservation

→ Payment made upon reservation : 25% of rental sum
→ Payment balance : on handing over the keys

• rentals

→ Service charges included
→ Day tax included
→ Cleaning charge on departure included

Accepted methods of payment

• Bank transfer (wire) • PayPal • Cash

[▶ Book now](#)

[▶ Contact the owner](#)

Contact directly the property owners

www.ihacom.co.uk

Advert No.

702

[>> Book now <<](#)

Contact

Spoken languages



* Converted at the rate indicated : €100 = \$110 = £91

Advert No. 702

www.ihacom.co.uk

