

# Holiday lettings Serra da Arrábida "Banda D"

Magnificent apartment only 5 min walking distance from beaches.



**Flat-Apartments** 1st floor, separate entrance, in a(an) Apartment block 3 floors

Setting : exotic

Capacity : from 1 to 6 person(s)

Bedroom(s) : 3

Room(s) : 2

Sol Tróia - District of Setúbal - Lisbon and Tagus Valley  
Portugal

Advert No. 67738

www.ihacom.co.uk



>> HOLIDAY LETTINGS

BOOK DIRECT WITH THE OWNERS



## Holiday lettings



Flat-Apartments 1st floor, separate entrance, in a(an) Apartment block 3 floors

- **Ideal for family, couples with baby**
- **View :** panoramic, unobscured, country side, garden/park, fantastic sunset
- **Setting :** exotic
- **Exposure :** South-west

" 2 bedrooms with double bed area of bunk beds with 2 bunk beds, kitchen, WC, living room, balcony overlooking. Main garden and facilities for children Equipped up to 6 people. "

## Assets

- **Parking :**  
Parking uncovered : off road.
- **Advantages :**  
Mini-golf, 1 bike(s), motor boat, sailing boat, horses and riding equipment

**Benefits :**  
Direct access to the beach, marina mooring space, private golf course



## Surroundings & location



" ALL FACILITIES in the nearby including Beaches, Golf, pools, Dolphin Watch, Bird Watch, etc. The area is a top level vacancy for people and families loving nature. "

### Leisure

- **Leisure activities less than 20 km / 12 miles :**

Bathing, snorkelling, scuba diving, water skiing, windsurfing, sailing, kite surfing, canyoning, golf, tennis, kite flying, fishing, angling

- **Supervised :**

Dive school

- **Attractions and relaxation :**

Bar/pub, restaurant, nature reserve, casino

### Surroundings

- **Locality :**

Sea/ocean 330'  
Sandy beach 165'  
Nudist beach 0.3mi.  
Creek 330'  
18 hole golf course 660'  
River 990'  
Mountain range 1.25mi.  
Marina 165'

- **Amenities :**

Bus stop / bus station  
Bike/mountain bike hire 330'  
Scuba diving material hire 2.5mi.  
Local shops <165'  
Supermarket <165'  
Post office <165'  
Bank <165'  
Hospital 1.5mi.



living room



kitchen

Advert No. 67738

[www.ihacom.co.uk](http://www.ihacom.co.uk)





living room

### Interior

- **Receive up to :**  
from 1 to 6 person(s) (4 adults, 2 children)
- **Liveable floor area :**  
600 Sq.ft.
- **Interior layout :**  
2 Room(s), 3 bedroom(s), 1 bathroom, 1 shower room, WC, living room 215 Sq.ft., sitting room, separate kitchen, dining area, tv room, music room, dressing room, patio, veranda
- **Sleeps - bed(s) :**  
2 double bed(s), four poster bed(s), 2 bunk beds
- **Guest facilities :**  
T.V., DVD player, mosquito nets, electric heating, Rolling shutters
- **Appliances :**  
Kitchen utensils, cafetiere, electric espresso coffee maker, toaster, oven, mini-oven, micro-wave oven, refridgerator, freezer, vacuum cleaner

### Exterior

- **Outside setting :**  
Pinewood, kitchen garden, ornamental lake
- **Outside amenities :**  
Outside bar, parasol



veranda

### Services

- **Washing :**  
Pillows
- **House :**  
Cleaning on departure supplement (+£31\*)

### For your guidance

- **For your guidance**  
Children welcome  
No pet allowed  
Non smoking rental, mobile telephone network coverage, personal transport advisable  
Water : hot/cold  
Local voltage supply : 220V / 60Hz



bedroom



Photo album - 1



kitchen



living room



living room

Photo album - 2



bedroom



veranda



infants bedroom



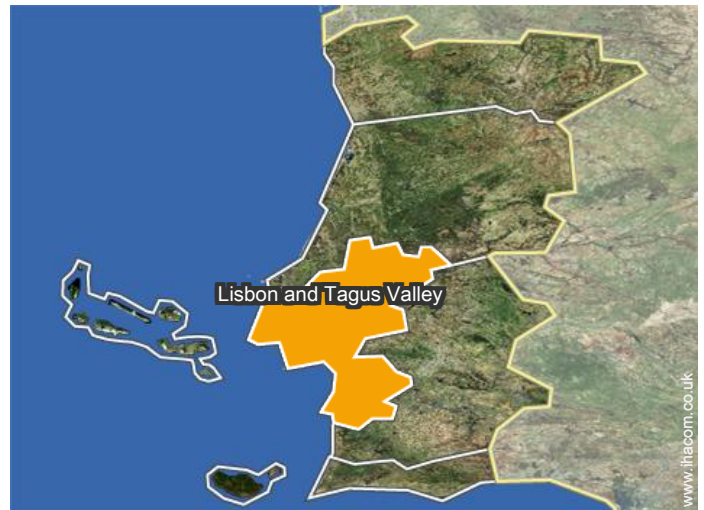
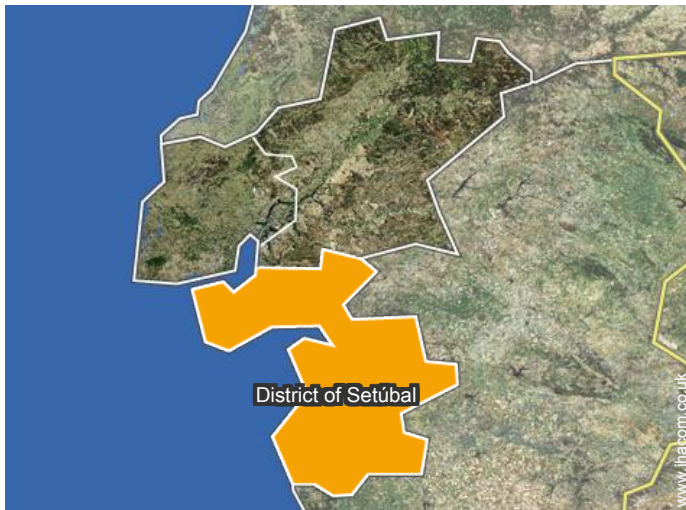
infants bedroom



bathroom



### Location



### Location & Access

" Access by Ferryboat from Setúbal. "



GPS coordinates in degrees, minutes, seconds: Latitude 38°29'7"N - Longitude 8°54'26"W (Dwelling)

#### Address

→ Rua do Lago  
7570 Sol Tróia

#### • Sea port Troia Ponte do Adoxe

→ Sol Tróia, District of Setúbal, Lisbon and Tagus Valley, Portugal  
→ Distance : 3mi.  
→ Time : 10'

#### • Coach station Troia

→ Sol Tróia, District of Setúbal, Lisbon and Tagus Valley, Portugal  
→ Distance : 3mi.  
→ Time : 10'

• Setúbal : (3mi.)

### Contact

Spoken languages



# Holiday lettings Lisbon and Tagus Valley - Portugal "Banda D"

7  
[Book now](#)

Availability calendar - from : june 2019

June	Sa	Su	M	Tu	W	Th	F	Sa	Su	M	Tu	W	Th	F	Sa	Su	M	Tu	W	Th	F	Sa	Su	M	Tu	W	Th	F	Sa	Su
2019	1	2	3	4	5	6	7	8	9	10	11	12	13	14	15	16	17	18	19	20	21	22	23	24	25	26	27	28	29	30
															-	-	-	-	-	-	-	-	-	-	-	-	-	-	-	-

Jul	M	Tu	W	Th	F	Sa	Su	M	Tu	W	Th	F	Sa	Su	M	Tu	W	Th	F	Sa	Su	M	Tu	W	Th	F	Sa	Su	M	Tu	W
2019	1	2	3	4	5	6	7	8	9	10	11	12	13	14	15	16	17	18	19	20	21	22	23	24	25	26	27	28	29	30	31
	-	-	-	-	-	-	-	-	-	-	-	-	-	-	-	-	-	-	-	-	-	-	-	-	-	-	-	-	-	-	-

Aug	Th	F	Sa	Su	M	Tu	W	Th	F	Sa	Su	M	Tu	W	Th	F	Sa	Su	M	Tu	W	Th	F	Sa	Su	M	Tu	W	Th	F	Sa
2019	1	2	3	4	5	6	7	8	9	10	11	12	13	14	15	16	17	18	19	20	21	22	23	24	25	26	27	28	29	30	31
	-	-	-	-	-	-	-	-	-	-	-	-	-	-	-	-	-	-	-	-	-	-	-	-	-	-	-	-	-	-	-

Sep	Su	M	Tu	W	Th	F	Sa	Su	M	Tu	W	Th	F	Sa	Su	M	Tu	W	Th	F	Sa	Su	M	Tu	W	Th	F	Sa	Su	M
2019	1	2	3	4	5	6	7	8	9	10	11	12	13	14	15	16	17	18	19	20	21	22	23	24	25	26	27	28	29	30
	-	-	-	-	-	-	-	-	-	-	-	-	-	-	-	-	-	-	-	-	-	-	-	-	-	-	-	-	-	-

Oct	Tu	W	Th	F	Sa	Su	M	Tu	W	Th	F	Sa	Su	M	Tu	W	Th	F	Sa	Su	M	Tu	W	Th	F	Sa	Su	M	Tu	W	Th
2019	1	2	3	4	5	6	7	8	9	10	11	12	13	14	15	16	17	18	19	20	21	22	23	24	25	26	27	28	29	30	31
	-	-	-	-	-	-	-	-	-	-	-	-	-	-	-	-	-	-	-	-	-	-	-	-	-	-	-	-	-	-	-

Nov	F	Sa	Su	M	Tu	W	Th	F	Sa	Su	M	Tu	W	Th	F	Sa	Su	M	Tu	W	Th	F	Sa	Su	M	Tu	W	Th	F	Sa
2019	1	2	3	4	5	6	7	8	9	10	11	12	13	14	15	16	17	18	19	20	21	22	23	24	25	26	27	28	29	30
	-	-	-	-	-	-	-	-	-	-	-	-	-	-	-	-	-	-	-	-	-	-	-	-	-	-	-	-	-	-

Dec	Su	M	Tu	W	Th	F	Sa	Su	M	Tu	W	Th	F	Sa	Su	M	Tu	W	Th	F	Sa	Su	M	Tu	W	Th	F	Sa	Su	M	Tu
2019	1	2	3	4	5	6	7	8	9	10	11	12	13	14	15	16	17	18	19	20	21	22	23	24	25	26	27	28	29	30	31
	-	-	-	-	-	-	-	-	-	-	-	-	-	-	-	-	-	-	-	-	-	-	-	-	-	-	-	-	-	-	-

Jan	W	Th	F	Sa	Su	M	Tu	W	Th	F	Sa	Su	M	Tu	W	Th	F	Sa	Su	M	Tu	W	Th	F	Sa	Su	M	Tu	W	Th	F
2020	1	2	3	4	5	6	7	8	9	10	11	12	13	14	15	16	17	18	19	20	21	22	23	24	25	26	27	28	29	30	31
	-	-	-	-	-	-	-	-	-	-	-	-	-	-	-	-	-	-	-	-	-	-	-	-	-	-	-	-	-	-	-

Feb	Sa	Su	M	Tu	W	Th	F	Sa	Su	M	Tu	W	Th	F	Sa	Su	M	Tu	W	Th	F	Sa	Su						
2020	1	2	3	4	5	6	7	8	9	10	11	12	13	14	15	16	17	18	19	20	21	22	23	24	25	26	27	28	29
	-	-	-	-	-	-	-	-	-	-	-	-	-	-	-	-	-	-	-	-	-	-	-	-	-	-	-	-	-

Mar	Su	M	Tu	W	Th	F	Sa	Su	M	Tu	W	Th	F	Sa	Su	M	Tu	W	Th	F	Sa	Su	M	Tu	W	Th	F	Sa	Su	M	Tu
2020	1	2	3	4	5	6	7	8	9	10	11	12	13	14	15	16	17	18	19	20	21	22	23	24	25	26	27	28	29	30	31
	-	-	-	-	-	-	-	-	-	-	-	-	-	-	-	-	-	-	-	-	-	-	-	-	-	-	-	-	-	-	-



# Holiday lettings Serra da Arrábida - Portugal "Banda D"

8  
[Book now](#)

## Availability calendar - from : march 2020

Apr	W	Th	F	Sa	Su	M	Tu	W	Th	F	Sa	Su	M	Tu	W	Th	F	Sa	Su	M	Tu	W	Th							
2020	1	2	3	4	5	6	7	8	9	10	11	12	13	14	15	16	17	18	19	20	21	22	23	24	25	26	27	28	29	30
	-	-	-	-	-	-	-	-	-	-	-	-	-	-	-	-	-	-	-	-	-	-	-	-	-	-	-	-	-	

May	F	Sa	Su	M	Tu	W	Th	F	Sa	Su	M	Tu	W	Th	F	Sa	Su	M	Tu	W	Th	F	Sa	Su							
2020	1	2	3	4	5	6	7	8	9	10	11	12	13	14	15	16	17	18	19	20	21	22	23	24	25	26	27	28	29	30	31
	-	-	-	-	-	-	-	-	-	-	-	-	-	-	-	-	-	-	-	-	-	-	-	-	-	-	-	-	-	-	

[Month : Next >>](#)

## Rental rates - Flat-Apartments - from 1 to 6 Person(s)

Rates	Night	Weekend	week	2 weeks	Month
<span style="color: green;">■</span> Low season	£45*	£89*	£312*	£579*	-
<span style="color: blue;">■</span> Mid season	£71* (Monday)	£160* (Friday)	£356* (Monday)	£712* (Monday)	-
<span style="color: orange;">■</span> High season	£98* (Monday)	£312* (Friday)	£685* (Monday)	£1246* (Monday)	-

(Check-in day)

[Book now](#)

### Booking conditions

#### • Reservation

- Payment made upon reservation : 50% of rental sum
- Payment balance : on handing over the keys
- Deposit required : £134\*

#### • rentals

- Service charges included
- Cleaning charge levy on departure : £31\*

[▶ Book now](#)

[▶ Contact the owner](#)

### Accepted methods of payment

- Visa/Delta/Electron
- Bank transfer (wire)
- PayPal
- Cash

Contact directly the property owners

[www.ihacom.co.uk](http://www.ihacom.co.uk)

Advert No.

67738

[>> Book now <<](#)

### Contact

Spoken languages



\* Converted at the rate indicated : €100 = \$116.85 = £89

Advert No. 67738

[www.ihacom.co.uk](http://www.ihacom.co.uk)



[>> HOLIDAY LETTINGS](#)

[BOOK DIRECT WITH THE OWNERS](#)