

Holiday lettings Sliema Flat-Apartments



Flat-Apartments ground floor in a(an)
Apartment block 1 floor

Setting : waterfront, urban

Capacity : 8 person(s)

Bedroom(s) : 4

Sliema - Malta Island

Malta

Advert No. 17053

www.ihacom.co.uk



>> HOLIDAY LETTINGS

BOOK DIRECT WITH THE OWNERS

Holiday lettings



Flat-Apartments ground floor in a(an) Apartment block 1 floor

- **Ideal for all age groups**
- **View :** unobscured, sea/ocean, harbour
- **Setting :** waterfront, urban

Assets

- **baby equipment :**
Baby chair

Surroundings & location



Seaside



Fishing

Leisure

- **Leisure activities less than 20 km / 12 miles :**

Bathing, snorkelling, scuba diving

- **Supervised :**

Dive school

- **Attractions and relaxation :**

Bar/pub, discotheque, restaurant, leisure park, casino

Surroundings

- **Locality :**

Sandy beach 1.85mi.
Rocky beach 660'
Stretch of water <165'

- **Amenities :**

Village centre <165'
Town centre 330'
Bus stop / bus station <165'
Local shops 330'
Supermarket 330'
Bank 660'
Cash point 660'
Chemist 990'
Hospital 1.85mi.



veranda



living room



Advert No. 17053

www.ihacom.co.uk





living room

Interior

- **Receive up to :**
8 person(s) (8 adults)
- **Liveable floor area :**
1,940 Sq.ft.
- **Interior layout :**
4 bedroom(s), 1 bathroom, 1 shower room, living room, separate kitchen, dining area, veranda
- **Sleeps - bed(s) :**
1 double bed(s), 6 single bed(s)
- **Guest facilities :**
Lift, T.V., telephone, cable/satellite, wifi, wardrobe, cupboard, hair dryer, partly air conditioned, Curtains
- **Appliances :**
Crockery/cutlery, kitchen utensils, electric kettle, toaster, gas cooker, oven, micro-wave oven, refridgerator, dish washer, washing machine, iron

Exterior

- **Outside accommodation :**
Terrace



dining area

Services

- **Washing :**
Sheets, Towels, Linen, Pillows
- **House :**
Cleaning on departure, Parking supplement (+£9*), Airport transfers supplement (+£13*)

For your guidance

- **For your guidance**
Children welcome
Pets accepted under certain conditions (ask the owner)
Non smoking rental
Water not drinkable
Local voltage supply : 220-240V / 50Hz
Electricity supply : mains



dining area

Photo album - 1



veranda



living room



living room



dining area

Photo album - 2



dining area

kitchen

double bed(s)



double bed(s)

single bed(s)

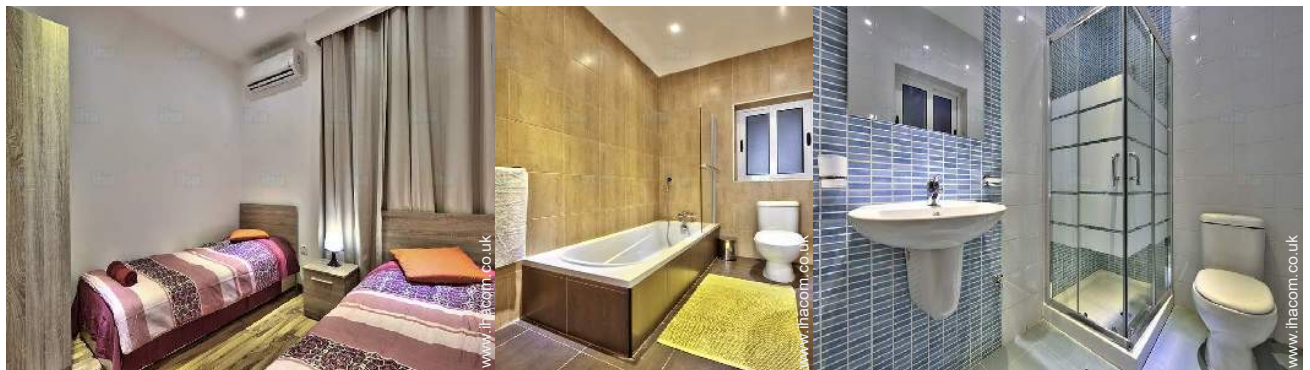
single bed(s)



single bed(s)

single bed(s)

single bed(s)



single bed(s)

bathroom

shower room

Location



Location & Access



GPS coordinates in degrees, minutes, seconds: Latitude 35°54'27"N - Longitude 14°30'26"E ([Dwelling](#))

Address

→ 44, Triq ix-Xatt ta' Tigne

• Valletta : (4.5mi.)

• **Airport Malta**

→ Valletta, Malta Island, Malta

→ Distance : 6mi.

→ Time : 30'

• **Sea port Valletta**

→ Valletta, Malta Island, Malta

→ Distance : 4.5mi.

→ Time : 20'

• **Coach station Valletta**

→ Valletta, Malta Island, Malta

→ Distance : 4.5mi.

→ Time : 20'

• St. Julian's : (1.85mi.)

Contact

Spoken languages



Holiday lettings Malta Island - Sliema Flat-Apartments

Availability calendar - from : december 2017

Dec	F	Sa	Su	M	Tu	W	Th	F	Sa	Su	M	Tu	W	Th	F	Sa	Su	M	Tu	W	Th	F	Sa	Su							
2017	1	2	3	4	5	6	7	8	9	10	11	12	13	14	15	16	17	18	19	20	21	22	23	24	25	26	27	28	29	30	31
Jan	M	Tu	W	Th	F	Sa	Su	M	Tu	W	Th	F	Sa	Su	M	Tu	W	Th	F	Sa	Su	M	Tu	W	Th	F	Sa	Su	M	Tu	W
2018	1	2	3	4	5	6	7	8	9	10	11	12	13	14	15	16	17	18	19	20	21	22	23	24	25	26	27	28	29	30	31
	-	-	-	-	-	-	-	-	-	-	-	-	-	-	-	-	-	-	-	-	-	-	-	-	-	-	-	-	-	-	-
Feb	Th	F	Sa	Su	M	Tu	W	Th	F	Sa	Su	M	Tu	W	Th	F	Sa	Su	M	Tu	W	Th	F	Sa	Su	M	Tu	W			
2018	1	2	3	4	5	6	7	8	9	10	11	12	13	14	15	16	17	18	19	20	21	22	23	24	25	26	27	28			
	-	-	-	-	-	-	-	-	-	-	-	-	-	-	-	-	-	-	-	-	-	-	-	-	-	-	-	-	-	-	
Mar	Th	F	Sa	Su	M	Tu	W	Th	F	Sa	Su	M	Tu	W	Th	F	Sa	Su	M	Tu	W	Th	F	Sa	Su	M	Tu	W	Th	F	Sa
2018	1	2	3	4	5	6	7	8	9	10	11	12	13	14	15	16	17	18	19	20	21	22	23	24	25	26	27	28	29	30	31
	-	-	-	-	-	-	-	-	-	-	-	-	-	-	-	-	-	-	-	-	-	-	-	-	-	-	-	-	-	-	-
Apr	Su	M	Tu	W	Th	F	Sa	Su	M	Tu	W	Th	F	Sa	Su	M	Tu	W	Th	F	Sa	Su	M	Tu	W	Th	F	Sa	Su	M	
2018	1	2	3	4	5	6	7	8	9	10	11	12	13	14	15	16	17	18	19	20	21	22	23	24	25	26	27	28	29	30	
	-	-	-	-	-	-	-	-	-	-	-	-	-	-	-	-	-	-	-	-	-	-	-	-	-	-	-	-	-	-	-
May	Tu	W	Th	F	Sa	Su	M	Tu	W	Th	F	Sa	Su	M	Tu	W	Th	F	Sa	Su	M	Tu	W	Th	F	Sa	Su	M	Tu	W	Th
2018	1	2	3	4	5	6	7	8	9	10	11	12	13	14	15	16	17	18	19	20	21	22	23	24	25	26	27	28	29	30	31
	-	-	-	-	-	-	-	-	-	-	-	-	-	-	-	-	-	-	-	-	-	-	-	-	-	-	-	-	-	-	-
June	F	Sa	Su	M	Tu	W	Th	F	Sa	Su	M	Tu	W	Th	F	Sa	Su	M	Tu	W	Th	F	Sa	Su	M	Tu	W	Th	F	Sa	
2018	1	2	3	4	5	6	7	8	9	10	11	12	13	14	15	16	17	18	19	20	21	22	23	24	25	26	27	28	29	30	
	-	-	-	-	-	-	-	-	-	-	-	-	-	-	-	-	-	-	-	-	-	-	-	-	-	-	-	-	-	-	-
Jul	Su	M	Tu	W	Th	F	Sa	Su	M	Tu	W	Th	F	Sa	Su	M	Tu	W	Th	F	Sa	Su	M	Tu	W	Th	F	Sa	Su	M	Tu
2018	1	2	3	4	5	6	7	8	9	10	11	12	13	14	15	16	17	18	19	20	21	22	23	24	25	26	27	28	29	30	31
	-	-	-	-	-	-	-	-	-	-	-	-	-	-	-	-	-	-	-	-	-	-	-	-	-	-	-	-	-	-	-
Aug	W	Th	F	Sa	Su	M	Tu	W	Th	F	Sa	Su	M	Tu	W	Th	F	Sa	Su	M	Tu	W	Th	F	Sa	Su	M	Tu	W	Th	F
2018	1	2	3	4	5	6	7	8	9	10	11	12	13	14	15	16	17	18	19	20	21	22	23	24	25	26	27	28	29	30	31
	-	-	-	-	-	-	-	-	-	-	-	-	-	-	-	-	-	-	-	-	-	-	-	-	-	-	-	-	-	-	-
Sep	Sa	Su	M	Tu	W	Th	F	Sa	Su	M	Tu	W	Th	F	Sa	Su	M	Tu	W	Th	F	Sa	Su	M	Tu	W	Th	F	Sa	Su	
2018	1	2	3	4	5	6	7	8	9	10	11	12	13	14	15	16	17	18	19	20	21	22	23	24	25	26	27	28	29	30	
	-	-	-	-	-	-	-	-	-	-	-	-	-	-	-	-	-	-	-	-	-	-	-	-	-	-	-	-	-	-	-



Holiday lettings Malta Island - Malta Flat-Apartments

8
[Book now](#)






Availability calendar - from : september 2018

Oct	M	Tu	W	Th	F	Sa	Su	M	Tu	W	Th	F	Sa	Su	M	Tu	W	Th	F	Sa	Su	M	Tu	W	Th	F	Sa	Su	M	Tu	W
2018	1	2	3	4	5	6	7	8	9	10	11	12	13	14	15	16	17	18	19	20	21	22	23	24	25	26	27	28	29	30	31
	-	-	-	-	-	-	-	-	-	-	-	-	-	-	-	-	-	-	-	-	-	-	-	-	-	-	-	-	-	-	-

Nov	Th	F	Sa	Su	M	Tu	W	Th	F	Sa	Su	M	Tu	W	Th	F	Sa	Su	M	Tu	W	Th	F							
2018	1	2	3	4	5	6	7	8	9	10	11	12	13	14	15	16	17	18	19	20	21	22	23	24	25	26	27	28	29	30
	-	-	-	-	-	-	-	-	-	-	-	-	-	-	-	-	-	-	-	-	-	-	-	-	-	-	-	-	-	-

[Month : Next >>](#)

Rental rates - Flat-Apartments - 8 Person(s)

Rates	Night	Weekend	week	2 weeks	Month
 Low season	£128* > 4	-	£896*	-	-
 Mid season	£167* > 5	-	£1165*	-	-
 High season	£202* > 7	-	£1411*	-	-
 Festive specials	£167* > 7	-	£1165*	-	-
 Promotional period	£230* > 7	-	£1613*	-	-

> Minimum Night

[Book now](#)



living room



living room



dining area



veranda



Booking conditions

• **Reservation**

→ Payment made upon reservation :
40% of rental sum
→ Deposit required : £179*

• **rentals**

→ Anticipated supplement for :
- supplementary bed(s)

Accepted methods of payment

• Bank transfer (wire) • PayPal

[▶ Book now](#)

[▶ Contact the owner](#)

Contact directly the property owners

www.ihacom.co.uk

Advert No.

17053

[>> Book now <<](#)

Contact

Spoken languages



* Converted at the rate indicated : €100 = \$117.29 = £89.59

Advert No. 17053

www.ihacom.co.uk

