

Holiday lettings Sirmione Flat-Apartments

Bright apartment on the Lake, in residence with swimming pool.



Flat-Apartments 1st floor, shared entrance, in a(an) Apartment hotel

Setting : lakeside, tranquil

Capacity : from 2 to 4 person(s)

Bedroom(s) : 1

Room(s) : 2

Sirmione - Province of Brescia (BS) - Lombardy
Italy

Advert No. 1140

www.ihacom.co.uk



Holiday lettings



Flat-Apartments 1st floor, shared entrance, in a(an) Apartment hotel

- **Ideal for all age groups**
- **View :** panoramic, not overlooked, swimming pool, garden/park, lake, fantastic sunset
- **Setting :** lakeside, tranquil

" Two rooms on the first floor in a residence on the Lake with pool and private garden. Large and bright living-room with kitchen, double sofa-bed and balcony with view on the Lake. room with balcony overlooking the Lake, bathroom with shower. Equipped with TV LCD 32 ' and independent air-conditioning. There is also a covered private parking. "

Assets

- **Swimming pool :**
Shared swimming pool, rectangular, sea water, steps in, step ladder, outside shower (open from '01 june' till '13 september')
- **Parking :**
Covered parking Parking uncovered

Benefits :
Direct access to the beach

Surroundings & location



" Located on the Spiaggia Brema of Sirmione, in the beautiful scenery of Lake Garda, also known for the benefits of the thermal baths of Catullus. A few kilometers from amusement parks such as Gardaland, Caneva world, Safari Park, Parco giardino Sicutà. "

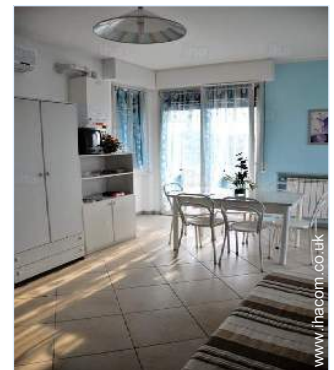
Leisure

- **Leisure activities less than 20 km / 12 miles :**

Bathing, pedalo, snorkelling, jet ski, windsurfing, golf, tennis, boat trips, mini-golf, go-karting, ten-pin bowling, volleyball, clay pidgeon shooting, fishing

Surroundings

- **Locality :**
Sandy beach <165'
Windsurfing spots 660'
Surfing spots 660'
Watersports centre 330'
Lake <165'
Marina 330'
Slipway 330'



living room



interior



double bed(s)

Interior

- **Receive up to :**
from 2 to 4 person(s) (4 adults)
- **Interior layout :**
2 Room(s), 1 bedroom(s), living room 270 Sq.ft.
- **Sleeps - bed(s) :**
1 double bed(s), 1 sofa bed(s) 2 pers
- **Guest facilities :**
T.V., book collection, t.v points, partly air conditioned
- **Appliances :**
Crockery/cutlery, kitchen utensils, cafetiere, electric coffee maker, electric kettle, juicer, gas cooker, refridgerator, freezer

Exterior

- **Outside accommodation :**
Balcony
- **Outside setting :**
Private courtyard, garden
- **Outside amenities :**
BBQ, garden table(s), garden seat(s), parasol, sun recliner(s), outside shower facilities



Services

- **Washing :**
Sheets supplement, Towels supplement, Linen supplement, Beach towels supplement, Blanket(s), Quilt(s), Pillows
- **House :**
Cleaning, Cleaning on departure supplement, Garden/swimming pool maintenance, Caretaker/ concierge, Parking

For your guidance

- **For your guidance**
Children welcome
Pets accepted
Mobile telephone network coverage
Water : hot/cold
Local voltage supply : 110-120V / 60Hz
Electricity supply : mains
- **Handicapped people welcome**
Wheelchair access



Outside setting

Photo album - 1



interior



living room



double bed(s)

Photo album - 2



Outside setting




garden

Location



Location & Access

" 4 km from the A4 motorway, exit Sirmione-5 kilometres from the station Desenzano del Garda and 8 km from the railway station of Peschiera del Garda - 25 km from Catullo Villafranca of Verona and Brescia Montichiari airports. "

 GPS coordinates in degrees, minutes, seconds: Latitude 45°28'21"N - Longitude 10°36'6"E ([Dwelling](#))

Address

→ Via Gramsci 53
25019 Sirmione

• Motorway (junction) A4 Sirmione

→ Sirmione, Province of Brescia,
Lombardy, Italy
→ Distance : 2.5mi.
→ Time : 5'

• Airport Villafranca

→ Verona, Province of Verona, Veneto,
Italy
→ Distance : 18.5mi.
→ Time : 30'

• Train station Desenzano del Garda

Sirmione

→ Desenzano del Garda, Province of
Brescia, Lombardy, Italy
→ Distance : 3mi.
→ Time : 10'

• Brescia : (26,8mi.)

• Verona : (24,3mi.)

Contact

Spoken
languages

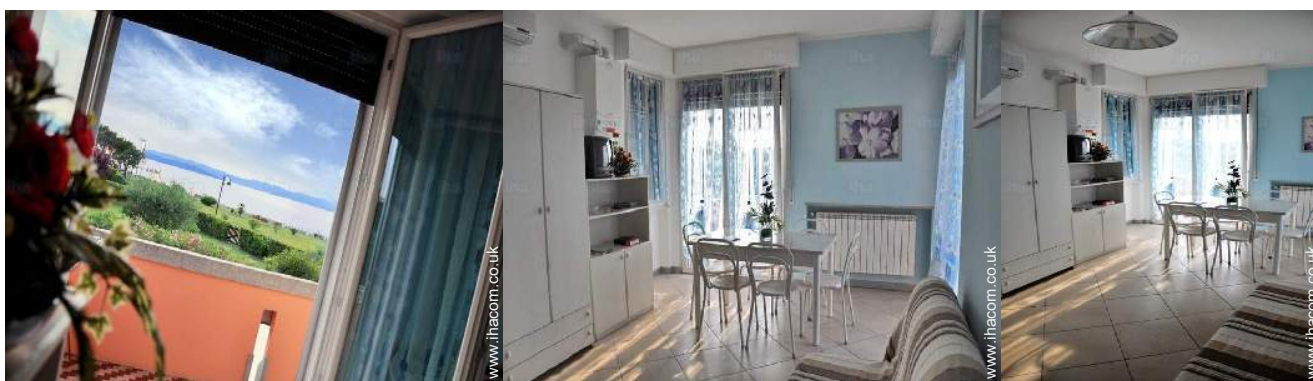


Rental rates - Flat-Apartments - from 2 to 4 Person(s)

Rates	Night	Weekend	week	2 weeks	Month
 Low season	-	-	£498*	-	-
 Mid season	-	-	£605* (Saturday)	-	-
 High season	-	-	£694* (Saturday)	-	-
 Promotional period	-	-	£436*	-	-

(Check-in day)

[Book now](#)



interior

living room

Booking conditions

• Reservation

- Payment made upon reservation : 20% of rental sum
- Payment balance : on handing over the keys
- Deposit required : £89*

• rentals

- Service charges included
- Day tax included
- Cleaning charge levy on departure : £36*
- Anticipated supplement for :
 - animals
 - supplementary bed(s)

Accepted methods of payment

- International Money Order
- Bank transfer (wire)
- Bankers draft
- Cash

[▶ Book now](#)

[▶ Contact the owner](#)

Contact directly the property owners

www.ihacom.co.uk

Advert No.

1140

>> [Book now](#) <<

Contact

Spoken languages



* Converted at the rate indicated : €100 = \$123.46 = £88.94

Advert No. 1140

www.ihacom.co.uk

