

Holiday lettings Sesimbra "Apartamento em Sesimbra"



Flat-Apartments 3rd floor, separate entrance, in a(an) Estate 3 floors

Setting : waterfront, seaside

Capacity : from 4 to 6 person(s)

Bedroom(s) : 2

Room(s) : 3

Sesimbra - District of Setúbal - Lisbon and Tagus Valley
Portugal

Advert No. 55448

www.ihacom.co.uk



>> HOLIDAY LETTINGS

BOOK DIRECT WITH THE OWNERS



Holiday lettings



Flat-Apartments 3rd floor, separate entrance, in a(an) Estate 3 floors

- **Ideal for all age groups, family**
- **View :** panoramic, unobscured, not overlooked, dominant, sea/ocean, fantastic sunset
- **Setting :** waterfront, seaside
- **Exposure :** South

Surroundings & location



Seaside



Fishing



Festival



Culture

Leisure

- **Leisure activities less than 20 km / 12 miles :**

Bathing, pedalo, snorkelling, scuba diving, golf, tennis, hiking, paragliding, boat trips, horse trekking, ten-pin bowling, fishing, deep-sea angling, angling

- **Attractions and relaxation :**

Fitness centre

Surroundings

- **Locality :**

Sea/ocean 660'
Sandy beach 660'
Stretch of water

- **Amenities :**

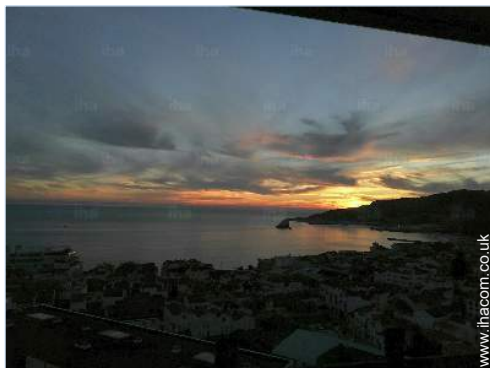
Village centre 165'
Bus stop / bus station <165'
Breadshop <165'
Caterer <165'
Local shops <165'
Supermarket <165'
Hairdressing salon <165'
Internet cafe <165'
Post office <165'
Bank <165'
Cash point <165'
Chemist <165'
Doctor
Dispensing clinic <165'



master bedroom



master bedroom



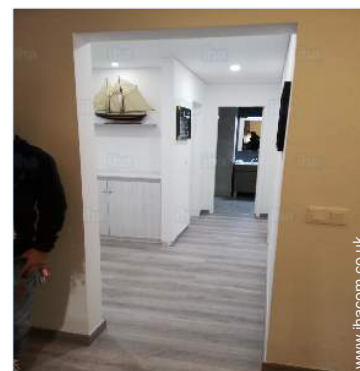
view from the flat



Interior layout

Exterior

- Ground surface :
< 1,076 Sq.ft.



the flat

Interior

- Receive up to :
from 4 to 6 person(s) (4 adults, 2 children)
- Liveable floor area :
700 Sq.ft.
- Interior layout :
3 Room(s), 2 bedroom(s), 1 bathroom, shower room, living room 215 Sq.ft., american style kitchen, dining room
- Sleeps - bed(s) :
1 double bed(s), 2 foldaway bed(s) 1 pers, 1 sofa bed(s) 1 pers
- Guest facilities :
T.V., hi-fi system, cable/satelite, internet access, high speed internet access, wifi, wardrobe, hair dryer, electric heating, Curtains, Blinds, Double glazed, Rolling shutters
- Appliances :
Crockery/cuttlery, kitchen utensils, cafetiere, electric espresso coffee maker, electric kettle, toaster, juicer, electric cooker, electric hobs, oven, mini-oven, micro-wave oven, refridgerator, freezer, dish washer, washing machine, vacuum cleaner, iron, ironing board

Services

- Washing :
Sheets, Towels, Linen, Blanket(s), Quilt(s), Pillows
- House :
Cleaning supplement, Cleaning on departure supplement, Parking, Airport transfers supplement

For your guidance

- For your guidance
Children welcome
No pet allowed
Non smoking rental, mobile telephone network coverage, personal transport advisable
Water : hot/cold
Local voltage supply : 110-120V / 60Hz



block of flats

Photo album - 1



view from the flat



master bedroom



master bedroom



Interior layout



block of flats

Photo album - 2



the flat

block of flats

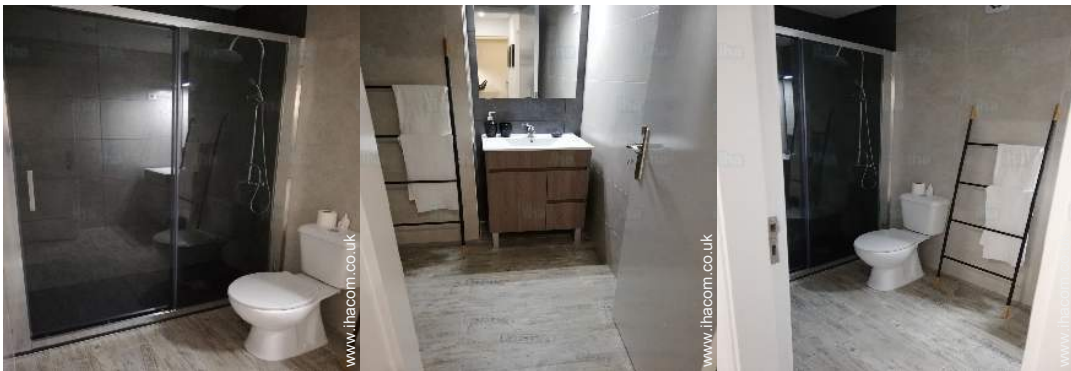
bedroom



bedroom

kitchen

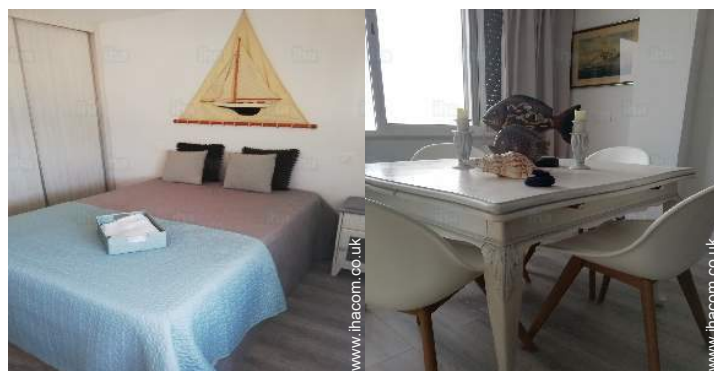
electric cooker



shower room

bathroom

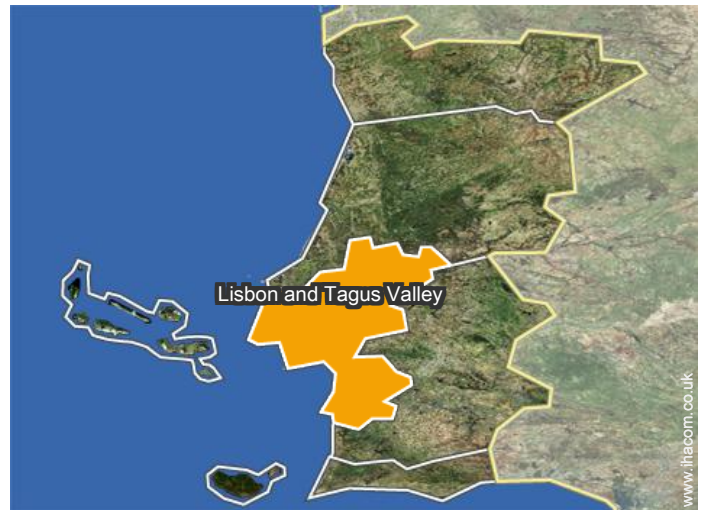
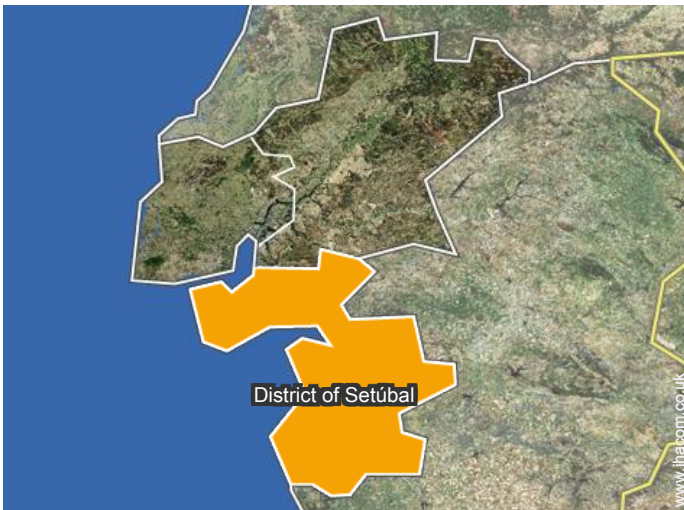
shower room



Seaside

dining room

Location



Location & Access



GPS coordinates in degrees, minutes, seconds: Latitude 38°29'8"N - Longitude 9° 7'25"W (Dwelling)

Address

→ Rua Conceição Morais 3 3Td
2970 Sesimbra

• Coach station TST Sesimbra

→ Sesimbra, District of Setúbal, Lisbon and Tagus Valley, Portugal
→ Distance : 0.62mi.
→ Time : 20'

• Motorway (junction) Seixal

→ Sesimbra, District of Setúbal, Lisbon and Tagus Valley, Portugal
→ Distance : 7,5mi.
→ Time : 40'

- Setúbal : (12.5mi.)
- Lisbon : (19,3mi.)
- Azeitão : (7,5mi.)

Contact

Spoken languages



Holiday lettings Sesimbra - Portugal "Apartamento em Sesimbra"

Availability calendar - from : june 2019

June	Sa	Su	M	Tu	W	Th	F	Sa	Su	M	Tu	W	Th	F	Sa	Su	M	Tu	W	Th	F	Sa	Su	M	Tu	W	Th	F	Sa	Su
2019	1	2	3	4	5	6	7	8	9	10	11	12	13	14	15	16	17	18	19	20	21	22	23	24	25	26	27	28	29	30

Jul	M	Tu	W	Th	F	Sa	Su	M	Tu	W	Th	F	Sa	Su	M	Tu	W	Th	F	Sa	Su	M	Tu	W	Th	F	Sa	Su	M	Tu	W
2019	1	2	3	4	5	6	7	8	9	10	11	12	13	14	15	16	17	18	19	20	21	22	23	24	25	26	27	28	29	30	31

Aug	Th	F	Sa	Su	M	Tu	W	Th	F	Sa	Su	M	Tu	W	Th	F	Sa	Su	M	Tu	W	Th	F	Sa	Su	M	Tu	W	Th	F	Sa
2019	1	2	3	4	5	6	7	8	9	10	11	12	13	14	15	16	17	18	19	20	21	22	23	24	25	26	27	28	29	30	31

Sep	Su	M	Tu	W	Th	F	Sa	Su	M	Tu	W	Th	F	Sa	Su	M	Tu	W	Th	F	Sa	Su	M	Tu	W	Th	F	Sa	Su	M
2019	1	2	3	4	5	6	7	8	9	10	11	12	13	14	15	16	17	18	19	20	21	22	23	24	25	26	27	28	29	30

Oct	Tu	W	Th	F	Sa	Su	M	Tu	W	Th	F	Sa	Su	M	Tu	W	Th	F	Sa	Su	M	Tu	W	Th	F	Sa	Su	M	Tu	W	Th
2019	1	2	3	4	5	6	7	8	9	10	11	12	13	14	15	16	17	18	19	20	21	22	23	24	25	26	27	28	29	30	31
	-	-	-	-	-	-	-	-	-	-	-	-	-	-	-	-	-	-	-	-	-	-	-	-	-	-	-	-	-	-	-

Nov	F	Sa	Su	M	Tu	W	Th	F	Sa	Su	M	Tu	W	Th	F	Sa	Su	M	Tu	W	Th	F	Sa							
2019	1	2	3	4	5	6	7	8	9	10	11	12	13	14	15	16	17	18	19	20	21	22	23	24	25	26	27	28	29	30
	-	-	-	-	-	-	-	-	-	-	-	-	-	-	-	-	-	-	-	-	-	-	-	-	-	-	-	-	-	-

Dec	Su	M	Tu	W	Th	F	Sa	Su	M	Tu	W	Th	F	Sa	Su	M	Tu	W	Th	F	Sa	Su	M	Tu							
2019	1	2	3	4	5	6	7	8	9	10	11	12	13	14	15	16	17	18	19	20	21	22	23	24	25	26	27	28	29	30	31
	-	-	-	-	-	-	-	-	-	-	-	-	-	-	-	-	-	-	-	-	-	-	-	-	-	-	-	-	-	-	

Jan	W	Th	F	Sa	Su	M	Tu	W	Th	F	Sa	Su	M	Tu	W	Th	F	Sa	Su	M	Tu	W	Th	F							
2020	1	2	3	4	5	6	7	8	9	10	11	12	13	14	15	16	17	18	19	20	21	22	23	24	25	26	27	28	29	30	31
	-	-	-	-	-	-	-	-	-	-	-	-	-	-	-	-	-	-	-	-	-	-	-	-	-	-	-	-	-	-	

Feb	Sa	Su	M	Tu	W	Th	F	Sa	Su	M	Tu	W	Th	F	Sa	Su	M	Tu	W	Th	F	Sa							
2020	1	2	3	4	5	6	7	8	9	10	11	12	13	14	15	16	17	18	19	20	21	22	23	24	25	26	27	28	29
	-	-	-	-	-	-	-	-	-	-	-	-	-	-	-	-	-	-	-	-	-	-	-	-	-	-	-	-	-

Mar	Su	M	Tu	W	Th	F	Sa	Su	M	Tu	W	Th	F	Sa	Su	M	Tu	W	Th	F	Sa	Su	M	Tu							
2020	1	2	3	4	5	6	7	8	9	10	11	12	13	14	15	16	17	18	19	20	21	22	23	24	25	26	27	28	29	30	31
	-	-	-	-	-	-	-	-	-	-	-	-	-	-	-	-	-	-	-	-	-	-	-	-	-	-	-	-	-	-	

■ High season




Holiday lettings
 District of Setúbal - Lisbon and Tagus Valley
"Apartamento em Sesimbra"

8
[Book now](#)

Availability calendar - from : march 2020




Apr	W	Th	F	Sa	Su	M	Tu	W	Th	F	Sa	Su	M	Tu	W	Th	F	Sa	Su	M	Tu	W	Th	F	Sa	Su	M	Tu	W	Th
2020	1	2	3	4	5	6	7	8	9	10	11	12	13	14	15	16	17	18	19	20	21	22	23	24	25	26	27	28	29	30
	-	-	-	-	-	-	-	-	-	-	-	-	-	-	-	-	-	-	-	-	-	-	-	-	-	-	-	-	-	-

May	F	Sa	Su	M	Tu	W	Th	F	Sa	Su	M	Tu	W	Th	F	Sa	Su	M	Tu	W	Th	F	Sa	Su							
2020	1	2	3	4	5	6	7	8	9	10	11	12	13	14	15	16	17	18	19	20	21	22	23	24	25	26	27	28	29	30	31
	-	-	-	-	-	-	-	-	-	-	-	-	-	-	-	-	-	-	-	-	-	-	-	-	-	-	-	-	-		

 High season

[Month : Next >>](#)

Rental rates - Flat-Apartments - from 4 to 6 Person(s)

Rates	Night	Weekend	week	2 weeks	Month
 Low season	£71* > 2	£107*	£312*	£561*	-
 High season	£89*	-	£623*	£1157*	-
 Festive specials	£89*	£89*	-	-	-

> Minimum Night

[Book now](#)

Booking conditions

• Reservation

- Payment made upon reservation : 30% of rental sum
- Payment balance : on handing over the keys
- Deposit required : £267*

Accepted methods of payment

- Bank transfer (wire) • Cash

[▶ Book now](#)

[▶ Contact the owner](#)

Contact directly the property owners

www.ihacom.co.uk

Advert No.

55448

[>> Book now <<](#)

Contact

Spoken languages



* Converted at the rate indicated : €100 = \$116.85 = £89

Advert No. 55448

www.ihacom.co.uk

