

Holiday lettings Seririt "Villa Caraka"



Villa, detached, 1 floor, separate entrance, in a(an) Private estate

Setting : heavenly, seaside

Capacity : 10 person(s)

Bedroom(s) : 4

Room(s) : 4

Seririt - Bali - Sunda Islands

Indonesia

Reservation : +31 (0) 72 5092976 (Netherlands)

Advert No. 22312

www.ihacom.co.uk



>> HOLIDAY LETTINGS

BOOK DIRECT WITH THE OWNERS

Holiday lettings



Villa, detached, 1 floor, separate entrance, in a(an) Private estate

- **Ideal for family, retired people**
- **View :** panoramic, not overlooked, sea/ocean, mountain, swimming pool, garden/park
- **Setting :** heavenly, seaside
- **Exposure :** North

Assets

- **Swimming pool :**
Private swimming-pool, rectangular (length 60', width 20'), cascading, illuminated, steps in, outside shower (open from '01 january' till '31 december')
- **Parking :**
Covered parking : 2 carport.
- **Advantages :**
Massage table, 2 snorkelling equipment, courtesy car, motor boat
- **baby equipment :**
Baby chair, baby changer, baby potty, playpen

Benefits :
Direct access to the beach

Surroundings & location



Leisure

- **Leisure activities less than 20 km / 12 miles :**

Bathing, snorkelling, scuba diving, scuba diving (Standard diving dress), surfing, windsurfing, kite surfing, canyoning, rafting, tennis, riding school, hiking, mountain bike (path), horse trekking, fishing, deep-sea angling

- **Supervised :**

Dive school, riding school

- **Attractions and relaxation :**

Bar/pub, discotheque, restaurant, zoo/animal park, nature reserve, historical site, local craftshop

Surroundings

- **Locality :**

Sea/ocean <165'
Sandy beach <165'
18 hole golf course 12.5mi.
Windsurfing spots 15.5mi.
Surfing spots 15.5mi.
Stretch of water <165'

- **Amenities :**

Village centre 1.25mi.
Bus stop / bus station 0.62mi.
Bike/mountain bike hire <165'
Scooter/motorbike hire <165'
Car rental <165'
Scuba diving material hire <165'
Breadshop <165'
Caterer
Local shops 330'
Supermarket 1.25mi.
Hairdressing salon 1.25mi.
Internet cafe 1.25mi.
Post office 1.25mi.
Bank 1.25mi.
Cash point 1.25mi.
Chemist 1.25mi.
Doctor 1.25mi.
Hospital 1.25mi.



View



view from the terrace



north-westerly view

Exterior

- **Ground surface :**
1.25 acre
- **Outside accommodation :**
Terrace 1,076 Sq.ft., covered terrace 430 Sq.ft., balcony 215 Sq.ft., sundeck 530 Sq.ft., gazebo, garden shed
- **Outside setting :**
Enclosed grounds 1.25 acre, garden > 0.25 acre, tropical garden > 0.25 acre, lawn > 0.25 acre, orchard 1,076 Sq.ft., natural pools, wells/spring, fountain
- **Outside amenities :**
Summer living area, garden table(s), 8 garden seat(s), trolley on wheels, parasol, 8 chaise(s) longue(s), outside shower facilities



southerly view

Interior

- **Receive up to :**
10 person(s) (8 adults, 2 children)
- **Liveable floor area :**
3,000 Sq.ft.
- **Interior layout :**
4 Room(s), 4 bedroom(s), 4 shower room, living room 530 Sq.ft., dining area, dressing room
- **Sleeps - bed(s) :**
3 super king-size bed(s), 2 single bed(s), 1 folding bed(s) 1 pers, 1 baby cot(s)
- **Guest facilities :**
T.V., home cinema, hi-fi system, DVD player, board games, book collection, film collection, telephone, cable/satellite, internet access, wifi, wardrobe, cupboard, hair dryer, mosquito nets, partly air conditioned, ceiling paddle fan, Curtains, remote controlled gates
- **Appliances :**
Crockery/cutlery, kitchen utensils, cafetiere, electric coffee maker, electric kettle, toaster, juicer, food processor, gas cooker, mini-oven, micro-wave oven, refrigerator, freezer, ice maker, washing machine, clothes dryer, vacuum cleaner, iron, ironing board

Services

- **Washing :**
Sheets (2 X / per week), Towels, Linen, Beach towels (2 X / per week), Quilt(s), Pillows
- **House :**
Cleaning (6 X / per week), Cleaning on departure, Garden/swimming pool maintenance (6 X / per week), Caretaker/concierge, Parking, Airport transfers supplement
- **Personnel :**
Staff, Chef(s), Chauffeur supplement, Baby sitting supplement, Beauty treatments supplement, Massage supplement, Guide supplement
- **Restauration :**
Breakfast supplement, BBQ meal supplement, Half board supplement, Full board supplement, Locally produced meals supplement, Picnic basket supplement

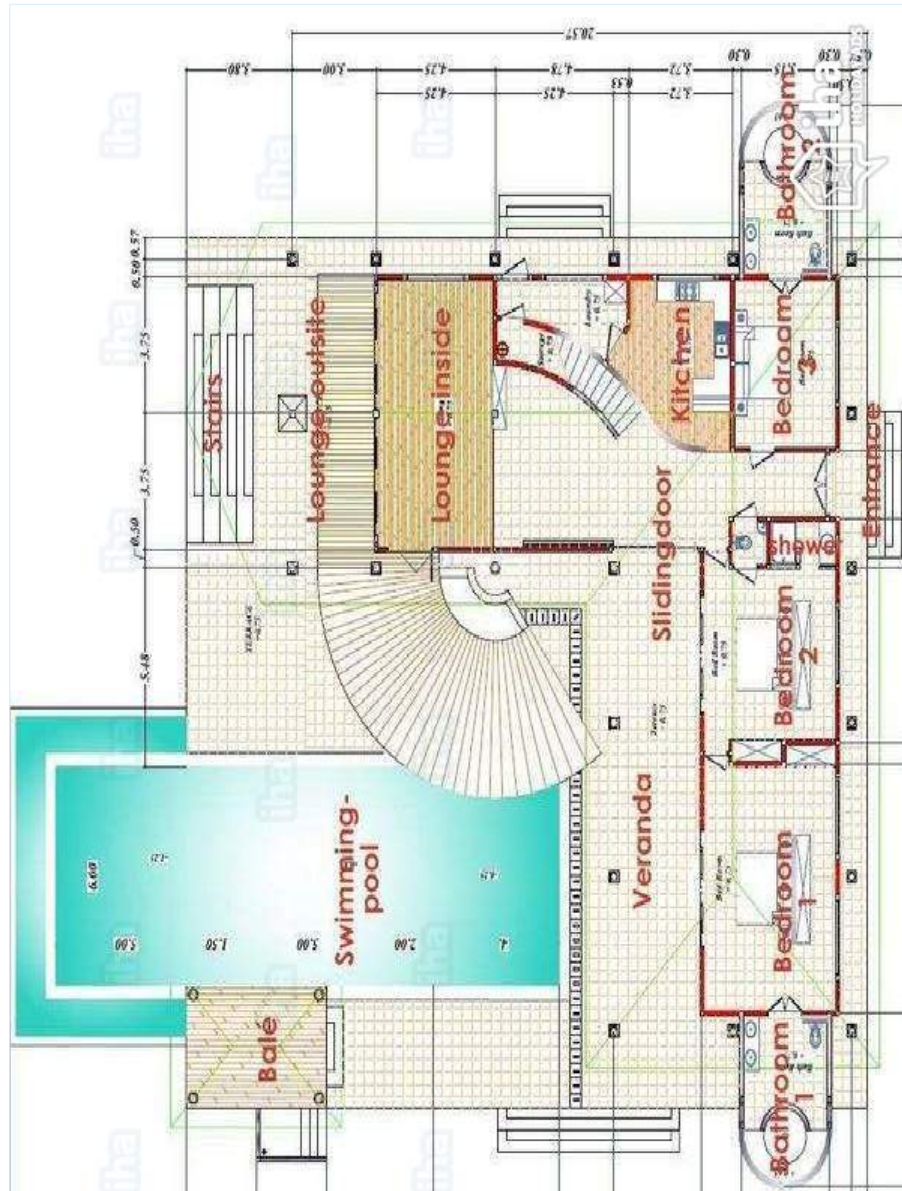
For your guidance

- **For your guidance**
Children welcome
No pet allowed
Mobile telephone network coverage
Water : hot/cold
Local voltage supply : 220-240V / 50Hz
Electricity supply : mains



northerly view

Floor plan



www.ihacom.co.uk

Photo album - 1



view from the terrace



View



north-westerly view



northerly view



southerly view

Photo album - 2



view from the bedroom



garden/park view



tropical garden



interior



Interior layout and facilities



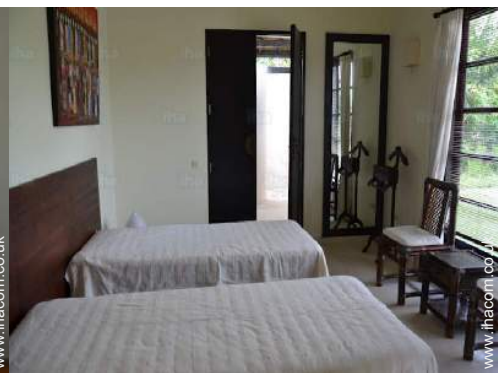
terrace



view over the sea

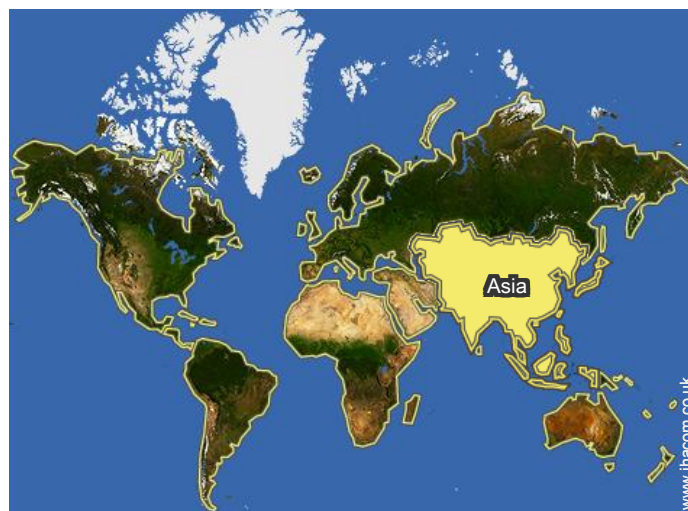
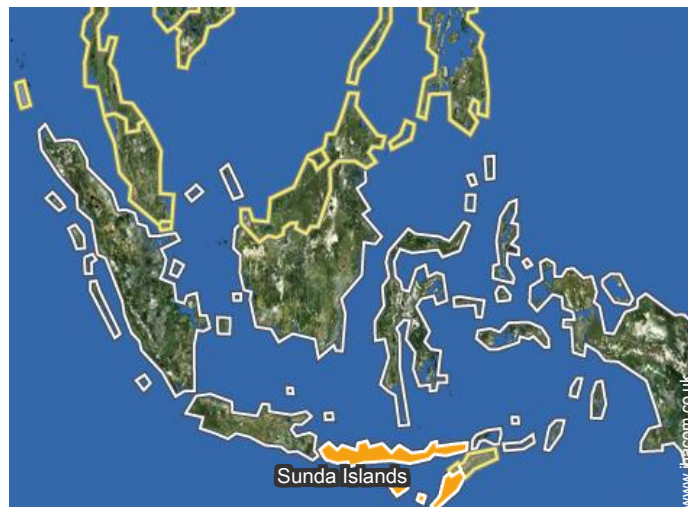


large bedroom



guest bedroom

Location



Location & Access



GPS coordinates in degrees, minutes, seconds: Latitude 8°10'59"S - Longitude 114°55'21"E ([Dwelling](#))

Address

→ Jalan Mawar 10
Lokapaksa
81153 Seririt

• [Airport Denpasar Ngurah Rai](#)

→ Denpasar, Bali, Sunda Islands,
Indonesia
→ Distance : 43,5mi.

• [Sea port Gilimanuk](#)

→ Gilimanuk, Bali, Sunda Islands,
Indonesia
→ Distance : 46,5mi.

• Lovina Beach : (4.5mi.)

Contact

Spoken
languages



Holiday lettings Bali - Sunda Islands "Villa Caraka"

8
[Book now](#)

Availability calendar - from : december 2017

Dec	F	Sa	Su	M	Tu	W	Th	F	Sa	Su	M	Tu	W	Th	F	Sa	Su	M	Tu	W	Th	F	Sa	Su							
2017	1	2	3	4	5	6	7	8	9	10	11	12	13	14	15	16	17	18	19	20	21	22	23	24	25	26	27	28	29	30	31
																	-	-	-	-	-	-	-	-	-	-	-	-	-	-	

Jan	M	Tu	W	Th	F	Sa	Su	M	Tu	W	Th	F	Sa	Su	M	Tu	W	Th	F	Sa	Su	M	Tu	W							
2018	1	2	3	4	5	6	7	8	9	10	11	12	13	14	15	16	17	18	19	20	21	22	23	24	25	26	27	28	29	30	31
	-	-	-	-	-	-	-	-	-	-	-	-	-	-	-	-	-	-	-	-	-	-	-	-	-	-	-	-	-	-	

Feb	Th	F	Sa	Su	M	Tu	W	Th	F	Sa	Su	M	Tu	W	Th	F	Sa	Su	M	Tu	W								
2018	1	2	3	4	5	6	7	8	9	10	11	12	13	14	15	16	17	18	19	20	21	22	23	24	25	26	27	28	
	-	-	-	-	-	-	-	-	-	-	-	-	-	-	-	-	-	-	-	-	-	-	-	-	-	-	-	-	-

Mar	Th	F	Sa	Su	M	Tu	W	Th	F	Sa	Su	M	Tu	W	Th	F	Sa	Su	M	Tu	W	Th	F	Sa							
2018	1	2	3	4	5	6	7	8	9	10	11	12	13	14	15	16	17	18	19	20	21	22	23	24	25	26	27	28	29	30	31
	-	-	-	-	-	-	-	-	-	-	-	-	-	-	-	-	-	-	-	-	-	-	-	-	-	-	-	-	-	-	

Apr	Su	M	Tu	W	Th	F	Sa	Su	M	Tu	W	Th	F	Sa	Su	M	Tu	W	Th	F	Sa	Su	M							
2018	1	2	3	4	5	6	7	8	9	10	11	12	13	14	15	16	17	18	19	20	21	22	23	24	25	26	27	28	29	30
	-	-	-	-	-	-	-	-	-	-	-	-	-	-	-	-	-	-	-	-	-	-	-	-	-	-	-	-	-	-

May	Tu	W	Th	F	Sa	Su	M	Tu	W	Th	F	Sa	Su	M	Tu	W	Th	F	Sa	Su	M	Tu	W	Th							
2018	1	2	3	4	5	6	7	8	9	10	11	12	13	14	15	16	17	18	19	20	21	22	23	24	25	26	27	28	29	30	31
	-	-	-	-	-	-	-	-	-	-	-	-	-	-	-	-	-	-	-	-	-	-	-	-	-	-	-	-	-	-	

June	F	Sa	Su	M	Tu	W	Th	F	Sa	Su	M	Tu	W	Th	F	Sa	Su	M	Tu	W	Th	F	Sa							
2018	1	2	3	4	5	6	7	8	9	10	11	12	13	14	15	16	17	18	19	20	21	22	23	24	25	26	27	28	29	30
	-	-	-	-	-	-	-	-	-	-	-	-	-	-	-	-	-	-	-	-	-	-	-	-	-	-	-	-	-	-

Jul	Su	M	Tu	W	Th	F	Sa	Su	M	Tu	W	Th	F	Sa	Su	M	Tu	W	Th	F	Sa	Su	M	Tu							
2018	1	2	3	4	5	6	7	8	9	10	11	12	13	14	15	16	17	18	19	20	21	22	23	24	25	26	27	28	29	30	31
	-	-	-	-	-	-	-	-	-	-	-	-	-	-	-	-	-	-	-	-	-	-	-	-	-	-	-	-	-	-	

Aug	W	Th	F	Sa	Su	M	Tu	W	Th	F	Sa	Su	M	Tu	W	Th	F	Sa	Su	M	Tu	W	Th	F							
2018	1	2	3	4	5	6	7	8	9	10	11	12	13	14	15	16	17	18	19	20	21	22	23	24	25	26	27	28	29	30	31
	-	-	-	-	-	-	-	-	-	-	-	-	-	-	-	-	-	-	-	-	-	-	-	-	-	-	-	-	-	-	

Sep	Sa	Su	M	Tu	W	Th	F	Sa	Su	M	Tu	W	Th	F	Sa	Su	M	Tu	W	Th	F	Sa	Su							
2018	1	2	3	4	5	6	7	8	9	10	11	12	13	14	15	16	17	18	19	20	21	22	23	24	25	26	27	28	29	30
	-	-	-	-	-	-	-	-	-	-	-	-	-	-	-	-	-	-	-	-	-	-	-	-	-	-	-	-	-	-

Availability calendar - from : september 2018

Oct	M	Tu	W	Th	F	Sa	Su	M	Tu	W	Th	F	Sa	Su	M	Tu	W	Th	F	Sa	Su	M	Tu	W							
2018	1	2	3	4	5	6	7	8	9	10	11	12	13	14	15	16	17	18	19	20	21	22	23	24	25	26	27	28	29	30	31
	-	-	-	-	-	-	-	-	-	-	-	-	-	-	-	-	-	-	-	-	-	-	-	-	-	-	-	-	-	-	

Nov	Th	F	Sa	Su	M	Tu	W	Th	F	Sa	Su	M	Tu	W	Th	F	Sa	Su	M	Tu	W	Th	F							
2018	1	2	3	4	5	6	7	8	9	10	11	12	13	14	15	16	17	18	19	20	21	22	23	24	25	26	27	28	29	30
	-	-	-	-	-	-	-	-	-	-	-	-	-	-	-	-	-	-	-	-	-	-	-	-	-	-	-	-	-	

[Month : Next >>](#)

Rental rates - Villa - 10 Person(s)

Rates	Night	Weekend	week	2 weeks	Month
 Low season	-	-	£891*	-	-
 High season	-	-	£1339*	-	-

[Book now](#)

Booking conditions

• Reservation

- Payment made upon reservation : 50% of rental sum
- Payment balance : 1 month before the stay

• rentals

- Service charges included
- Day tax included
- Cleaning charge on departure included

Accepted methods of payment

- Bank transfer (wire)

[▶ Book now](#)

[▶ Contact the owner](#)

Contact directly the property owners

www.ihacom.co.uk

Advert No.

22312

[>> Book now <<](#)

Contact

Spoken languages



* Converted at the rate indicated : €100 = \$117.29 = £89.59

Advert No. 22312

www.ihacom.co.uk

