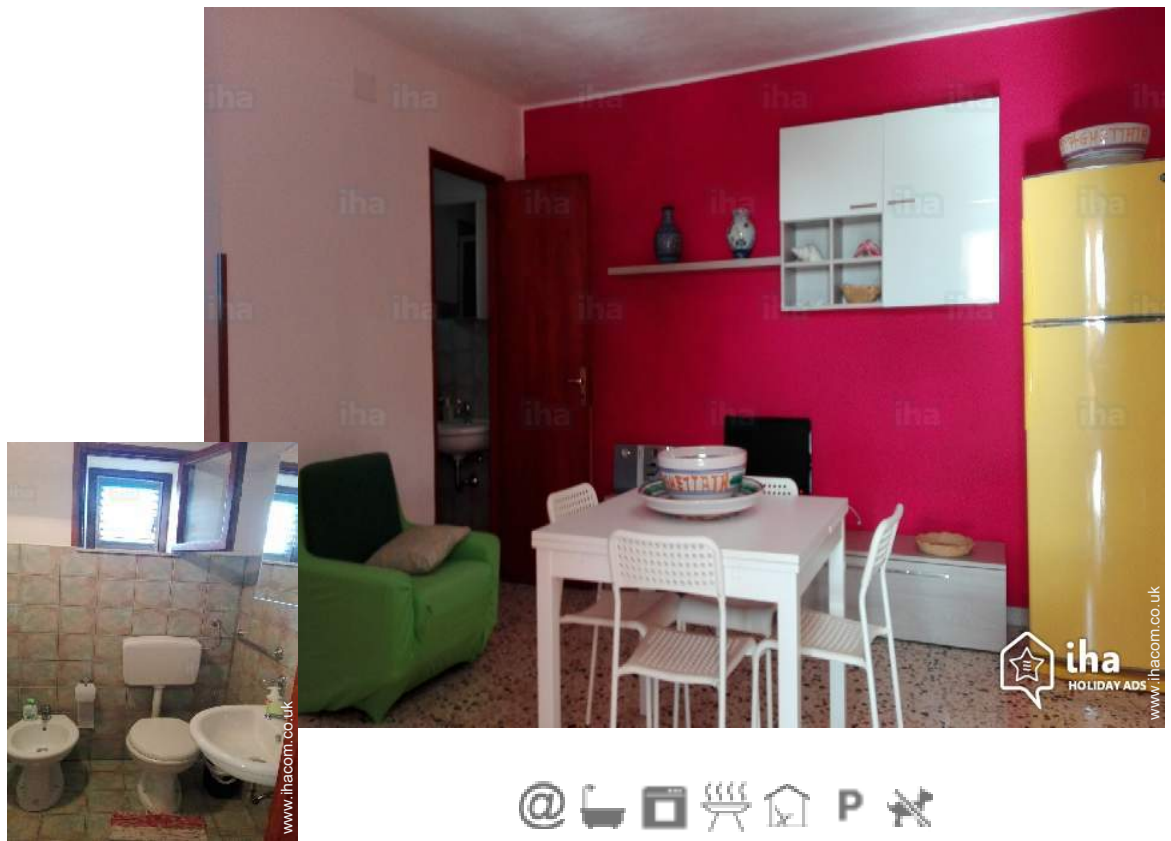


Holiday lettings Sciaccia "Villa giulia"

The apartment is on the bottom floor of a detached single family residential with garden located in the hills of monte San Calogero to 300 m in height with a splendid view on the sea and Sciaccia



Duplex ground floor, separate entrance, in a(an) Private property

Setting : country setting, tranquil

Capacity : from 2 to 4 person(s)

Bedroom(s) : 1

Room(s) : 2

Sciaccia - Province of Agrigento (AG) - Sicily

Italy

Advert No. 27029

www.ihacom.co.uk



>> HOLIDAY LETTINGS

BOOK DIRECT WITH THE OWNERS

Holiday lettings



Duplex ground floor, separate entrance, in a(an) Private property

- **Ideal for all age groups, family**
- **View :** panoramic, sea/ocean, country side, courtyard, farmland, fantastic sunset
- **Setting :** country setting, tranquil
- **Exposure :** South-west

" The area is very quiet and silent distance km. 4 from the city, ideal place to spend a holiday in the countryside but also not far from the sea. There are two labrador dogs very amiable still sealed in their space. In the House there is a double bed and two single beds with complete set of bath towels and sheets, a kitchenette with crockery and cutlery, oven, tv, internet connection. There is a large porch that we can use also for lunch or dinner and a barbecue and a private parking area. The linen has an extra cost of 5 euros per person. "

Assets

- **Parking :**
Parking uncovered : 1 internal.



bathroom

Surroundings & location



Countryside



Fishing



Culture

" The free time you can spend doing walks in the nature reserve of monte san calogero or going to the beach or boating or visiting the tourist areas that circondano Sciacca and its monuments "

Leisure

- **Leisure activities less than 20 km / 12 miles :**

Bathing, pedalo, snorkelling, scuba diving, surfing, tennis, boat trips, fishing, spear fishing

- **Supervised :**

Dive school

- **Attractions and relaxation :**

Bar/pub, restaurant, cinema, open air summer cinema, leisure park, historical site, museum, local craftshop

Surroundings

- **Locality :**

Sandy beach 3mi.
Shingle beach 4.5mi.
Nudist beach 25mi.
Public tennis court 3mi.
18 hole golf course 9mi.
Watersports centre 2.5mi.
Marina 2.5mi.
Slipway 2.5mi.

- **Amenities :**

Town centre 2.5mi.
Bus stop / bus station 2.5mi.
Bus pick up point beach 2.5mi.
Bike/mountain bike hire 2.5mi.
Scooter/motorbike hire 2.5mi.
Car rental 2.5mi.
Boat rental 2.5mi.
Scuba diving material hire 2.5mi.
Breadshop 1.85mi.
Local shops 2.5mi.
Supermarket 1.85mi.
Post office 1.85mi.
Bank 1.85mi.
Chemist 1.85mi.
Doctor 1.85mi.
Hospital 1.85mi.



south-westerly view



shower room



double bed(s)

Interior

- **Receive up to :**

from 2 to 4 person(s)

- **Liveable floor area :**

650 Sq.ft.

- **Interior layout :**

2 Room(s), 1 bedroom(s), 1 bathroom, 1 shower room, 1 WC, living room 323 Sq.ft., separate kitchen, dining room, cosy nook, tv room, veranda

- **Sleeps - bed(s) :**

1 double bed(s), 1 single bed(s), 1 folding bed(s) 1 pers

- **Guest facilities :**

T.V., t.v points, wifi, wardrobe, hair dryer, fly screens, central heating, remote controlled gates

- **Appliances :**

Crockery/cutlery, kitchen utensils, cafetiere, toaster, gas cooker, oven, refridgerator, freezer, vacuum cleaner, iron

Exterior

- **Ground surface :**

5,400 Sq.ft.

- **Outside accommodation :**

Covered terrace 270 Sq.ft.

- **Outside setting :**

Enclosed grounds 5,400 Sq.ft., garden 3,300 Sq.ft.

- **Outside amenities :**

Summer kitchen, summer living area, pizza oven, BBQ, garden table(s), garden seat(s), sun recliner(s)



cosy nook

Services

- **Washing :**

Sheets (1 X / per week), Towels (1 X / per week), Blanket(s), Quilt(s), Pillows (1 X / per week)

For your guidance

- **For your guidance**

Children welcome

No pet allowed

Present on site : pets

Mobile telephone network coverage

Water : hot/cold

Local voltage supply : 220-240V / 50Hz

Electricity supply : mains



living room

Photo album - 1



bathroom



shower room

south-westerly view



double bed(s)

living room

Photo album - 2



cosy nook



living room



living room



master bedroom



master bedroom



master bedroom



Outside setting

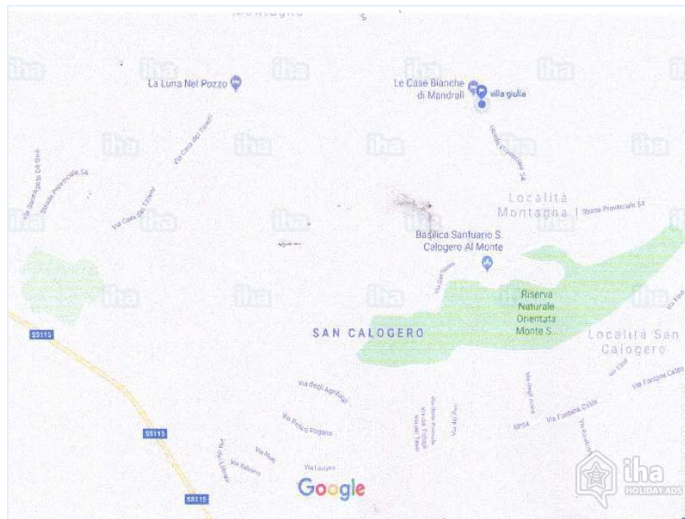


covered terrace



garden

Route map



Location & Access

" The House is located along the road leading to the mount Kronio 54 and is reached by a private road "



GPS coordinates in degrees, minutes, seconds: Latitude 37° 31'35"N - Longitude 13°6'48"E ([Dwelling](#))

Address

→ Strada Provinciale 54
92019 Sciacca

• Motorway (junction) a29

→ Punta Raisi, Province of Palermo, Sicily,
Italy

→ Distance : 62mi.

→ Time : 1h

• Coach station autobus

→ Palermo, Province of Palermo, Sicily,
Italy

→ Distance : 81mi.

→ Time : 1h30'

- Selinunte : (18.5mi.)
- Cattolica Eraclea : (18.5mi.)
- Agrigento : (40mi.)

Contact

Spoken
languages



Location



Holiday lettings Province of Agrigento - Sicily "Villa giulia"

Availability calendar - from : september 2019

Sep	Su	M	Tu	W	Th	F	Sa	Su	M	Tu	W	Th	F	Sa	Su	M	Tu	W	Th	F	Sa	Su	M							
2019	1	2	3	4	5	6	7	8	9	10	11	12	13	14	15	16	17	18	19	20	21	22	23	24	25	26	27	28	29	30
														-	-	-	-	-	-	-	-	-	-	-	-	-	-	-	-	

Oct	Tu	W	Th	F	Sa	Su	M	Tu	W	Th	F	Sa	Su	M	Tu	W	Th	F	Sa	Su	M	Tu	W	Th							
2019	1	2	3	4	5	6	7	8	9	10	11	12	13	14	15	16	17	18	19	20	21	22	23	24	25	26	27	28	29	30	31
	-	-	-	-	-	-	-	-	-	-	-	-	-	-	-	-	-	-	-	-	-	-	-	-	-	-	-	-	-	-	

Nov	F	Sa	Su	M	Tu	W	Th	F	Sa	Su	M	Tu	W	Th	F	Sa	Su	M	Tu	W	Th	F	Sa							
2019	1	2	3	4	5	6	7	8	9	10	11	12	13	14	15	16	17	18	19	20	21	22	23	24	25	26	27	28	29	30
	-	-	-	-	-	-	-	-	-	-	-	-	-	-	-	-	-	-	-	-	-	-	-	-	-	-	-	-	-	-

Dec	Su	M	Tu	W	Th	F	Sa	Su	M	Tu	W	Th	F	Sa	Su	M	Tu	W	Th	F	Sa	Su	M	Tu							
2019	1	2	3	4	5	6	7	8	9	10	11	12	13	14	15	16	17	18	19	20	21	22	23	24	25	26	27	28	29	30	31
	-	-	-	-	-	-	-	-	-	-	-	-	-	-	-	-	-	-	-	-	-	-	-	-	-	-	-	-	-	-	

Jan	W	Th	F	Sa	Su	M	Tu	W	Th	F	Sa	Su	M	Tu	W	Th	F	Sa	Su	M	Tu	W	Th	F							
2020	1	2	3	4	5	6	7	8	9	10	11	12	13	14	15	16	17	18	19	20	21	22	23	24	25	26	27	28	29	30	31
	-	-	-	-	-	-	-	-	-	-	-	-	-	-	-	-	-	-	-	-	-	-	-	-	-	-	-	-	-	-	

Feb	Sa	Su	M	Tu	W	Th	F	Sa	Su	M	Tu	W	Th	F	Sa	Su	M	Tu	W	Th	F	Sa							
2020	1	2	3	4	5	6	7	8	9	10	11	12	13	14	15	16	17	18	19	20	21	22	23	24	25	26	27	28	29
	-	-	-	-	-	-	-	-	-	-	-	-	-	-	-	-	-	-	-	-	-	-	-	-	-	-	-	-	-

Mar	Su	M	Tu	W	Th	F	Sa	Su	M	Tu	W	Th	F	Sa	Su	M	Tu	W	Th	F	Sa	Su	M	Tu							
2020	1	2	3	4	5	6	7	8	9	10	11	12	13	14	15	16	17	18	19	20	21	22	23	24	25	26	27	28	29	30	31
	-	-	-	-	-	-	-	-	-	-	-	-	-	-	-	-	-	-	-	-	-	-	-	-	-	-	-	-	-	-	

Apr	W	Th	F	Sa	Su	M	Tu	W	Th	F	Sa	Su	M	Tu	W	Th	F	Sa	Su	M	Tu	W	Th							
2020	1	2	3	4	5	6	7	8	9	10	11	12	13	14	15	16	17	18	19	20	21	22	23	24	25	26	27	28	29	30
	-	-	-	-	-	-	-	-	-	-	-	-	-	-	-	-	-	-	-	-	-	-	-	-	-	-	-	-	-	-

May	F	Sa	Su	M	Tu	W	Th	F	Sa	Su	M	Tu	W	Th	F	Sa	Su	M	Tu	W	Th	F	Sa	Su							
2020	1	2	3	4	5	6	7	8	9	10	11	12	13	14	15	16	17	18	19	20	21	22	23	24	25	26	27	28	29	30	31
	-	-	-	-	-	-	-	-	-	-	-	-	-	-	-	-	-	-	-	-	-	-	-	-	-	-	-	-	-	-	

June	M	Tu	W	Th	F	Sa	Su	M	Tu	W	Th	F	Sa	Su	M	Tu	W	Th	F	Sa	Su	M	Tu							
2020	1	2	3	4	5	6	7	8	9	10	11	12	13	14	15	16	17	18	19	20	21	22	23	24	25	26	27	28	29	30
	-	-	-	-	-	-	-	-	-	-	-	-	-	-	-	-	-	-	-	-	-	-	-	-	-	-	-	-	-	-

Mid season



Holiday lettings Siacca - Italy "Villa giulia"

9

[Book now](#)

Availability calendar - from : june 2020

Jul	W	Th	F	Sa	Su	M	Tu	W	Th	F	Sa	Su	M	Tu	W	Th	F	Sa	Su	M	Tu	W	Th	F							
2020	1	2	3	4	5	6	7	8	9	10	11	12	13	14	15	16	17	18	19	20	21	22	23	24	25	26	27	28	29	30	31

Aug	Sa	Su	M	Tu	W	Th	F	Sa	Su	M	Tu	W	Th	F	Sa	Su	M	Tu	W	Th	F	Sa	Su	M							
2020	1	2	3	4	5	6	7	8	9	10	11	12	13	14	15	16	17	18	19	20	21	22	23	24	25	26	27	28	29	30	31

■ Mid season

[Month : Next >>](#)

Rental rates - Duplex - from 2 to 4 Person(s)

Rates	Night	Weekend	week	2 weeks	Month
■ Low season	£55* > 2	-	£364*	-	-
■ Mid season	£64* > 3	-	£410*	-	-
■ High season	£77* > 6	-	£519*	-	-
■ Promotional period	£73* > 4	-	£473*	-	-

> Minimum Night

[Book now](#)

Booking conditions

• Reservation

→ Payment made upon reservation :
50% of rental sum
→ Payment balance :
on handing over the keys

• rentals

→ Service charges to be added
→ Day tax included
→ Cleaning charge levy on departure : £9*
→ Anticipated supplement for :
- supplementary bed(s)

Accepted methods of payment

• Visa/Delta/Electron • Bank transfer
(wire) • PayPal • Cash

[▶ Book now](#)[▶ Contact the owner](#)

Contact directly the property owners

www.ihacom.co.uk

Advert No.

27029

>> [Book now](#) <<

Contact

Spoken
languages



* Converted at the rate indicated : €100 = \$110 = £91

Advert No. 27029

www.ihacom.co.uk



>> HOLIDAY LETTINGS

BOOK DIRECT WITH THE OWNERS