

# Holiday lettings Salerno "Liliana"

Fantasic location to go to the beach, to visit salerno city and to visit surrounding area: NAPLES. SORRENT, AMALFI, POSITANO, POMPEI, ERCOLANO, VESUVIUS, PAESTUM.



House, detached, 1 floor, separate entrance, in a(an) Private road

Setting : seaside, urban

Capacity : from 1 to 5 person(s)

Bedroom(s) : 1

Room(s) : 2

Salerno - Province of Salerno (SA) - Campania

Italy

Advert No. 161

www.ihacom.co.uk



>> HOLIDAY LETTINGS

BOOK DIRECT WITH THE OWNERS

## Holiday lettings



House, detached, 1 floor, separate entrance, in a(an) Private road

- **Ideal for all age groups, family**
- **View :** town
- **Setting :** seaside, urban

" The house is in Salerno, just 400 m. from the beach. FANTASTIC! From the 4th of November 2013 there is the Underground in Salerno, and the underground stop is at just 1 min. from my house! So in only 4 min. you can reach the city centre, the turistic harbour, the railway station. If you want you can go on foot and the house is at only 10-15 min walking from the train station, the touristic harbour and the city centre. This house is located in an old courtyard dating back 1800. It has got 5 beds, there are 2 rooms (a bedroom and a living room with 3 beds) each room has got a bathroom (2 bathrooms in total with one shower) and a well equipped kitchen. Washing machine, air conditioning in each room, internet, TVsat, microwave, bed linen and towels (a set of 3 towels each person) provided each week. There is free parking outside the house It is only 10 min walking from the train station, the touristic harbour and the city centre. All facilities nearby, there is also a nice open market in the area and it is only 5 min walking from the sandy beach (there are free sandy beaches and paying beaches with swimming pool). Moreover there is a playground area for children just overlooking the ocean. "

## Assets

- **Parking :**  
Parking uncovered : off road.

## Surroundings & location



City



Fishing



Culture

" From Salerno in less than 30 min you are in Pompei, Ercolano, Greek archeological site of Paestum, In 35 min to Naples by train and in only 5 min by bus or by car you reach the first village of the Amalfi coast, the village of Vietri sul mare, very well known for its famous artcrafts works: potteries. 50 min by train to Sorrento and to Royal Palace of Caserta. There are also good train, buses connections. The mini cruise from the harbour just in front of the railway station of salerno to Amalfi coast (not in winter) Positano and the isle of Capri is really wonderful. Moreover there is a night life because there are cosy pubs, locals in the old city centre. It is possible to have ITALIAN LESSONS or to have a GUIDE (French, English speaking) to accompany you in your SIGHTSEEING TOURSask for more info and price. It is also possible to have COOKING LESSONS of Italian typical dishes and cakes, ask for more info and price. If you have not got a lot of time to visit the area i can also offer you EXCURSION SERVICE WITH PRIVATE DRIVER and GUIDE in English or French, ask for more info and price. SPECIAL from the 5th of NOVEMBER till the 31st of January there is the wonderful EVENT in SALERNO : LUCI d'ARTISTA Spectacular lights works around the city give you the impression of being in a romantic and suggestive fairy atmosphere. The narrow streets of the city centre, the medieval arechi castle..... "

### Leisure

- **Leisure activities less than 20 km / 12 miles :**

Bathing, scuba diving, surfing, windsurfing, tennis, angling

- **Supervised :**

Tennis school

- **Attractions and relaxation :**

Bar/pub, restaurant, park and garden, museum, theatre, opera house

### Surroundings

- **Locality :**

Sea/ocean 0.3mi.  
Sandy beach 0.3mi.

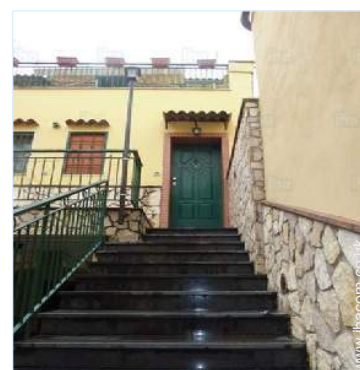
- **Amenities :**

Bus stop / bus station <165'  
Tube station <165'  
Bike/mountain bike hire 990'  
Local shops 165'  
Supermarket 165'  
Hairdressing salon 330'  
Internet cafe 330'  
Post office 0.3mi.

Hospital 1.85mi.



interior



façade



living room



living room

### Interior

- **Receive up to :**  
from 1 to 5 person(s)
- **Liveable floor area :**  
530 Sq.ft.
- **Interior layout :**  
2 Room(s), 1 bedroom(s), 2 bathroom, 1 shower room, living room, separate kitchen
- **Sleeps - bed(s) :**  
1 super king-size bed(s), 2 sofa bed(s) 2 pers, 1 sofa bed(s) 1 pers
- **Guest facilities :**  
T.V., cable/satelite, internet access, high speed internet access, wifi, wardrobe, cupboard, safe deposit box, fully air conditioned, electric heating
- **Appliances :**  
Kitchen utensils, cafetiere, micro-wave oven, refridgerator, freezer, washing machine, iron, ironing board

### Services

- **Washing :**  
Sheets (1 X / per week), Towels (3 X / per week), Linen (1 X / per week), Blanket(s), Quilt(s), Pillows
- **House :**  
Cleaning on departure supplement (+£27\*), Airport transfers supplement (+£72\*)

### For your guidance

- **For your guidance**  
Children welcome  
Pets accepted under certain conditions (ask the owner)  
Water : hot/cold



Photo album - 1



façade



interior

living room



living room

sofa bed(s) 2 pers

Photo album - 2



Sleeps - bed(s)

furniture

master bedroom



wardrobe

master bedroom

bathroom



bathroom

bathroom

separate kitchen



separate kitchen

separate kitchen



Photo album - 3



kitchen utensils



Salerno by night  
City



Culture



Culture



Culture



Culture



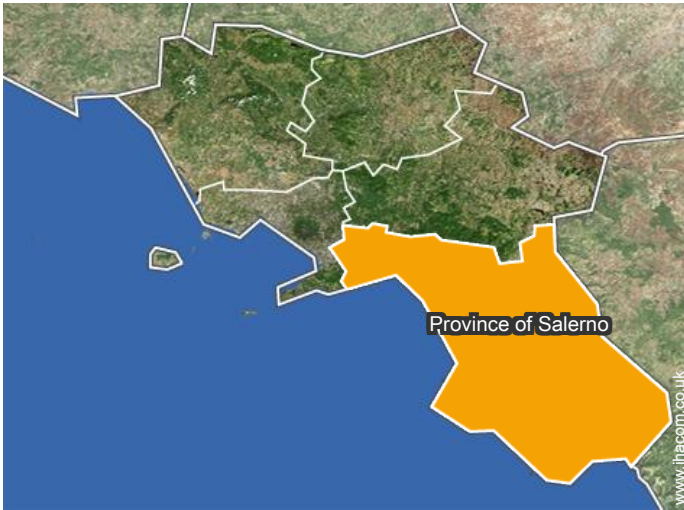
sea/ocean



view of the town



### Location



### Location & Access

" Just 500 m from the sandy beach, 1 min from underground station so in 4 min you arrive at central station and so at city centre, 10-15 min walking from central station "



GPS coordinates in degrees, minutes, seconds: Latitude 40°40'15"N - Longitude 14°47'27"E (Dwelling)

#### Address

→ plateario, 6  
84100 Salerno

- Paestum : (15.5mi.)
- Pompeii (Scavi) : (18.5mi.)
- Ercolano : (21mi.)

### Contact

Spoken languages



# Holiday lettings Province of Salerno - Campania "Liliana"

## Availability calendar - from : september 2017

Sep	F	Sa	Su	M	Tu	W	Th	F	Sa	Su	M	Tu	W	Th	F	Sa	Su	M	Tu	W	Th	F	Sa							
2017	1	2	3	4	5	6	7	8	9	10	11	12	13	14	15	16	17	18	19	20	21	22	23	24	25	26	27	28	29	30
																			-	-	-	-	-	-	-	-	-	-	-	

Oct	Su	M	Tu	W	Th	F	Sa	Su	M	Tu	W	Th	F	Sa	Su	M	Tu	W	Th	F	Sa	Su	M	Tu							
2017	1	2	3	4	5	6	7	8	9	10	11	12	13	14	15	16	17	18	19	20	21	22	23	24	25	26	27	28	29	30	31
	-	-	-	-	-	-	-	-	-	-	-	-	-	-	-	-	-	-	-	-	-	-	-	-	-	-	-	-	-	-	

Nov	W	Th	F	Sa	Su	M	Tu	W	Th	F	Sa	Su	M	Tu	W	Th	F	Sa	Su	M	Tu	W	Th							
2017	1	2	3	4	5	6	7	8	9	10	11	12	13	14	15	16	17	18	19	20	21	22	23	24	25	26	27	28	29	30
	-	-	-	-	-	-	-	-	-	-	-	-	-	-	-	-	-	-	-	-	-	-	-	-	-	-	-	-	-	-

Dec	F	Sa	Su	M	Tu	W	Th	F	Sa	Su	M	Tu	W	Th	F	Sa	Su	M	Tu	W	Th	F	Sa	Su							
2017	1	2	3	4	5	6	7	8	9	10	11	12	13	14	15	16	17	18	19	20	21	22	23	24	25	26	27	28	29	30	31
	-	-	-	-	-	-	-	-	-	-	-	-	-	-	-	-	-	-	-	-	-	-	-	-	-	-	-	-	-	-	

Jan	M	Tu	W	Th	F	Sa	Su	M	Tu	W	Th	F	Sa	Su	M	Tu	W	Th	F	Sa	Su	M	Tu	W							
2018	1	2	3	4	5	6	7	8	9	10	11	12	13	14	15	16	17	18	19	20	21	22	23	24	25	26	27	28	29	30	31
	-	-	-	-	-	-	-	-	-	-	-	-	-	-	-	-	-	-	-	-	-	-	-	-	-	-	-	-	-	-	

Feb	Th	F	Sa	Su	M	Tu	W	Th	F	Sa	Su	M	Tu	W	Th	F	Sa	Su	M	Tu	W							
2018	1	2	3	4	5	6	7	8	9	10	11	12	13	14	15	16	17	18	19	20	21	22	23	24	25	26	27	28
	-	-	-	-	-	-	-	-	-	-	-	-	-	-	-	-	-	-	-	-	-	-	-	-	-	-	-	-

Mar	Th	F	Sa	Su	M	Tu	W	Th	F	Sa	Su	M	Tu	W	Th	F	Sa	Su	M	Tu	W	Th	F	Sa							
2018	1	2	3	4	5	6	7	8	9	10	11	12	13	14	15	16	17	18	19	20	21	22	23	24	25	26	27	28	29	30	31
	-	-	-	-	-	-	-	-	-	-	-	-	-	-	-	-	-	-	-	-	-	-	-	-	-	-	-	-	-	-	

Apr	Su	M	Tu	W	Th	F	Sa	Su	M	Tu	W	Th	F	Sa	Su	M	Tu	W	Th	F	Sa	Su	M							
2018	1	2	3	4	5	6	7	8	9	10	11	12	13	14	15	16	17	18	19	20	21	22	23	24	25	26	27	28	29	30
	-	-	-	-	-	-	-	-	-	-	-	-	-	-	-	-	-	-	-	-	-	-	-	-	-	-	-	-	-	-

May	Tu	W	Th	F	Sa	Su	M	Tu	W	Th	F	Sa	Su	M	Tu	W	Th	F	Sa	Su	M	Tu	W	Th							
2018	1	2	3	4	5	6	7	8	9	10	11	12	13	14	15	16	17	18	19	20	21	22	23	24	25	26	27	28	29	30	31
	-	-	-	-	-	-	-	-	-	-	-	-	-	-	-	-	-	-	-	-	-	-	-	-	-	-	-	-	-	-	

June	F	Sa	Su	M	Tu	W	Th	F	Sa	Su	M	Tu	W	Th	F	Sa	Su	M	Tu	W	Th	F	Sa							
2018	1	2	3	4	5	6	7	8	9	10	11	12	13	14	15	16	17	18	19	20	21	22	23	24	25	26	27	28	29	30
	-	-	-	-	-	-	-	-	-	-	-	-	-	-	-	-	-	-	-	-	-	-	-	-	-	-	-	-	-	-





# Holiday lettings Salerno - Italy "Liliana"

9

[Book now](#)

## Availability calendar - from : june 2018

Jul	Su	M	Tu	W	Th	F	Sa	Su	M	Tu	W	Th	F	Sa	Su	M	Tu	W	Th	F	Sa	Su	M	Tu							
2018	1	2	3	4	5	6	7	8	9	10	11	12	13	14	15	16	17	18	19	20	21	22	23	24	25	26	27	28	29	30	31
-	-	-	-	-	-	-	-	-	-	-	-	-	-	-	-	-	-	-	-	-	-	-	-	-	-	-	-	-	-	-	

Aug	W	Th	F	Sa	Su	M	Tu	W	Th	F	Sa	Su	M	Tu	W	Th	F	Sa	Su	M	Tu	W	Th	F							
2018	1	2	3	4	5	6	7	8	9	10	11	12	13	14	15	16	17	18	19	20	21	22	23	24	25	26	27	28	29	30	31
-	-	-	-	-	-	-	-	-	-	-	-	-	-	-	-	-	-	-	-	-	-	-	-	-	-	-	-	-	-	-	

[Month : Next >>](#)

## Rental rates - House - from 1 to 5 Person(s)

Rates	Night	Weekend	week	2 weeks	Month
 Low season	£54* > 2	-	-	-	-
 Mid season	£54* > 2	-	-	-	-
 High season	£90* > 5	-	-	-	-

> Minimum Night

[Book now](#)

### Booking conditions

• **Reservation**

→ Payment made upon reservation : 50% of rental sum

• **rentals**

→ Cleaning charge levy on departure : £27\*

### Accepted methods of payment

• Visa/Delta/Electron • MasterCard/  
EuroCard • Solo • PayPal • Cash

[▶ Book now](#)

[▶ Contact the owner](#)

Contact directly the property owners

[www.ihacom.co.uk](http://www.ihacom.co.uk)

Advert No.

161

[>> Book now <<](#)

### Contact

Spoken languages



\* Converted at the rate indicated : €100 = \$117.29 = £89.59

Advert No. 161

[www.ihacom.co.uk](http://www.ihacom.co.uk)



[>> HOLIDAY LETTINGS](#)

[BOOK DIRECT WITH THE OWNERS](#)