

Holiday lettings Saint-Leu "Studio Spot"

Studio-cabin Spot, facing the ocean and the Saint-Leu surf spot



Bungalow, detached, single storey, separate entrance, in a(an) Traditional accommodation

Setting : tropical, seaside

Capacity : **from 2 to 4 person(s)**

Bedroom(s) : 1

Room(s) : 3

Saint-Leu

Reunion Island

Reservation : +33 (0) 2 62 34 76 98 (France)

Advert No. 12480

www.ihacom.co.uk



>> HOLIDAY LETTINGS

BOOK DIRECT WITH THE OWNERS

Holiday lettings



Bungalow, detached, single storey, separate entrance, in a(an) Traditional accommodation

- **View :** unobscured, sea/ocean, fantastic sunset
- **Setting :** tropical, seaside
- **Exposure :** South-west

" The studio is located in a small tourist Cabinet 3 rooms, 5 studios and 2 apartments of 2 rooms. The Lodge is located on the edge of the coast road, at the northern entrance to Saint-Leu, in front of the spot to surf, or to 20 meters from the sea and 200 meters from the city center and the lagoon. Amenities (restaurants, shops, buses...) are located within a radius of one kilometre, as well as many centres of interest. "

Assets

- **Parking :**
Parking uncovered
- **baby equipment :**
Baby chair, pushchair



Surroundings & location



Seaside



Fishing



Culture

" Saint-Leu is ideally located to stay on the West Coast and experience the Reunion Island by day trips to UPS, Maïdo, Cilaos, the Plains, the volcano, the wild South. In addition, many activities are offered at or around St - Leu: surf, diving, paragliding, mountain biking, trekking on foot or on horseback, golf..."

Leisure

- **Leisure activities less than 20 km / 12 miles :**

Bathing, snorkelling, scuba diving, jet ski, surfing, windsurfing, sailing, kite surfing, canoeing, golf, tennis, riding school, pathway, coastal/forest paths, hiking, climbing, rock climbing, mountain bike (path), paragliding, Microlights, boat trips, rollerblade/rollerskate (circuit), skate board (ramps), ATV/Quad Bike, go-karting, basketball, volleyball, deep-sea angling, angling, spear fishing

- **Supervised :**

Sailing school, dive school, tennis school, riding school

- **Attractions and relaxation :**

Bar/pub, discotheque, restaurant, cinema, open air summer cinema, park and garden, leisure park, sea world, nature reserve, museum, theatre, summer theatre, festivals, local craftshop

Surroundings

- **Locality :**

Sandy beach <165'
Public tennis court 0.3mi.
18 hole golf course 9mi.
Surfing spots 165'
Watersports centre 165'
Marina 0.3mi.

- **Amenities :**

Nursery 0.3mi.
Town centre 660'
Bus stop / bus station 660'
Bike/mountain bike hire 0.62mi.
Scooter/motorbike hire 0.62mi.
Car rental 0.62mi.
Scuba diving material hire 660'
Breadshop 660'
Caterer 660'
Local shops 660'
Supermarket 0.3mi.
Hairdressing salon 0.3mi.
Internet cafe 0.3mi.
Post office 0.3mi.
Bank 0.3mi.
Cash point 660'
Chemist 660'
Doctor 660'

Nurse 660'
Hospital 12.5mi.





Interior

- **Receive up to :**
from 2 to 4 person(s)
- **Liveable floor area :**
323 Sq.ft.
- **Interior layout :**
3 Room(s), 1 bedroom(s), 1 shower room, 1 WC, separate kitchen, veranda
- **Sleeps - bed(s) :**
1 double bed(s), 1 sofa bed(s) 2 pers
- **Guest facilities :**
T.V., wifi, ceiling paddle fan, Curtains, digipad entry gates
- **Appliances :**
Crockery/cuttlery, kitchen utensils, cafetiere, gas cooker, micro-wave oven, refridgerator

Exterior

- **Outside accommodation :**
Covered terrace 65 Sq.ft.
- **Outside setting :**
Enclosed grounds 5,400 Sq.ft., tropical garden 2,150 Sq.ft.
- **Outside amenities :**
Summer kitchen, garden table(s), 4 garden seat(s), sun lounge

Services

- **Washing :**
Sheets (1 X / per week), Towels (1 X / per week), Linen (1 X / per week), Beach towels supplement (2 X / per week), Blanket(s), Pillows
- **House :**
Cleaning (1 X / per week), Cleaning on departure, Parking
- **Personnel :**
Laundry supplement (+£4*), Baby sitting supplement, Guide supplement
- **Restauration :**
Breakfast supplement (+£4*)

For your guidance

- **For your guidance**
Children welcome
Pets accepted under certain conditions (ask the owner)
Present on site : pets
Mobile telephone network coverage, personal transport advisable
Water : hot/cold
Local voltage supply : 220-240V / 50Hz
Electricity supply : mains

Holiday lettings
Saint-Leu - Reunion Island
"Studio Spot"

4
[Book now](#)

Photo album - 1



Advert No. 12480

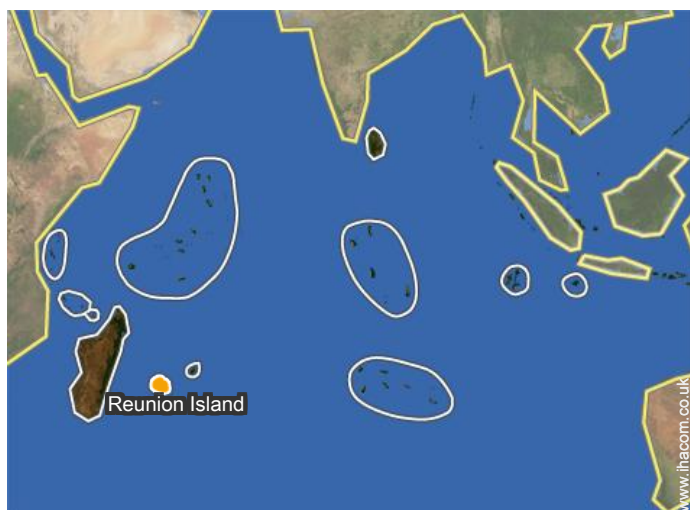
www.ihacom.co.uk



[>> HOLIDAY LETTINGS](#)


[BOOK DIRECT WITH THE OWNERS](#)

Location



Location & Access

" The Lodge is located on the West Coast, at the entrance to St - Leu, at 1 hour from the airport of St-Denis and can be easily reached from the airport by bus (direct of the Terminal, stop City Hall of St Leu in 200 m from the lodge) taxi or rental car. "

 GPS coordinates in degrees, minutes, seconds: Latitude 21° 9'49"S - Longitude 55°17'17"E ([Dwelling](#))

Address

→ 67, rue du général Lambert
97436 Saint-Leu

• Airport Roland Garros

→ Saint-Denis (Reunion), Reunion Island
→ Distance : 37,3mi.
→ Time : 1h15'

• Airport Saint Pierre Pierrefonds

→ Saint-Pierre, Reunion Island
→ Distance : 18.5mi.
→ Time : 30'

• Coach station Mairie de Saint-Leu

→ Saint-Leu, Reunion Island
→ Distance : 660'
→ Time : 5'

- Saint-Gilles-les-Bains : (7,5mi.)
- Saint-Pierre : (21mi.)
- Saint-Denis (Reunion) : (31mi.)

Contact

Spoken languages



Holiday lettings Saint-Leu - Reunion Island "Studio Spot"

[Book now](#)

Availability calendar - from : december 2017

Dec	F	Sa	Su	M	Tu	W	Th	F	Sa	Su	M	Tu	W	Th	F	Sa	Su	M	Tu	W	Th	F	Sa	Su							
2017	1	2	3	4	5	6	7	8	9	10	11	12	13	14	15	16	17	18	19	20	21	22	23	24	25	26	27	28	29	30	31
															-	-	-	-	-	-	-	-	-	-	-	-	-	-	-	-	

Jan	M	Tu	W	Th	F	Sa	Su	M	Tu	W	Th	F	Sa	Su	M	Tu	W	Th	F	Sa	Su	M	Tu	W							
2018	1	2	3	4	5	6	7	8	9	10	11	12	13	14	15	16	17	18	19	20	21	22	23	24	25	26	27	28	29	30	31
	-	-	-	-	-	-	-	-	-	-	-	-	-	-	-	-	-	-	-	-	-	-	-	-	-	-	-	-	-	-	

Feb	Th	F	Sa	Su	M	Tu	W	Th	F	Sa	Su	M	Tu	W	Th	F	Sa	Su	M	Tu	W							
2018	1	2	3	4	5	6	7	8	9	10	11	12	13	14	15	16	17	18	19	20	21	22	23	24	25	26	27	28
	-	-	-	-	-	-	-	-	-	-	-	-	-	-	-	-	-	-	-	-	-	-	-	-	-	-	-	-

Mar	Th	F	Sa	Su	M	Tu	W	Th	F	Sa	Su	M	Tu	W	Th	F	Sa	Su	M	Tu	W	Th	F	Sa							
2018	1	2	3	4	5	6	7	8	9	10	11	12	13	14	15	16	17	18	19	20	21	22	23	24	25	26	27	28	29	30	31
	-	-	-	-	-	-	-	-	-	-	-	-	-	-	-	-	-	-	-	-	-	-	-	-	-	-	-	-	-	-	

Apr	Su	M	Tu	W	Th	F	Sa	Su	M	Tu	W	Th	F	Sa	Su	M	Tu	W	Th	F	Sa	Su	M							
2018	1	2	3	4	5	6	7	8	9	10	11	12	13	14	15	16	17	18	19	20	21	22	23	24	25	26	27	28	29	30
	-	-	-	-	-	-	-	-	-	-	-	-	-	-	-	-	-	-	-	-	-	-	-	-	-	-	-	-	-	-

May	Tu	W	Th	F	Sa	Su	M	Tu	W	Th	F	Sa	Su	M	Tu	W	Th	F	Sa	Su	M	Tu	W	Th							
2018	1	2	3	4	5	6	7	8	9	10	11	12	13	14	15	16	17	18	19	20	21	22	23	24	25	26	27	28	29	30	31
	-	-	-	-	-	-	-	-	-	-	-	-	-	-	-	-	-	-	-	-	-	-	-	-	-	-	-	-	-	-	

June	F	Sa	Su	M	Tu	W	Th	F	Sa	Su	M	Tu	W	Th	F	Sa	Su	M	Tu	W	Th	F	Sa							
2018	1	2	3	4	5	6	7	8	9	10	11	12	13	14	15	16	17	18	19	20	21	22	23	24	25	26	27	28	29	30
	-	-	-	-	-	-	-	-	-	-	-	-	-	-	-	-	-	-	-	-	-	-	-	-	-	-	-	-	-	

Jul	Su	M	Tu	W	Th	F	Sa	Su	M	Tu	W	Th	F	Sa	Su	M	Tu	W	Th	F	Sa	Su	M	Tu							
2018	1	2	3	4	5	6	7	8	9	10	11	12	13	14	15	16	17	18	19	20	21	22	23	24	25	26	27	28	29	30	31
	-	-	-	-	-	-	-	-	-	-	-	-	-	-	-	-	-	-	-	-	-	-	-	-	-	-	-	-	-	-	

Aug	W	Th	F	Sa	Su	M	Tu	W	Th	F	Sa	Su	M	Tu	W	Th	F	Sa	Su	M	Tu	W	Th	F							
2018	1	2	3	4	5	6	7	8	9	10	11	12	13	14	15	16	17	18	19	20	21	22	23	24	25	26	27	28	29	30	31
	-	-	-	-	-	-	-	-	-	-	-	-	-	-	-	-	-	-	-	-	-	-	-	-	-	-	-	-	-	-	

Sep	Sa	Su	M	Tu	W	Th	F	Sa	Su	M	Tu	W	Th	F	Sa	Su	M	Tu	W	Th	F	Sa	Su							
2018	1	2	3	4	5	6	7	8	9	10	11	12	13	14	15	16	17	18	19	20	21	22	23	24	25	26	27	28	29	30
	-	-	-	-	-	-	-	-	-	-	-	-	-	-	-	-	-	-	-	-	-	-	-	-	-	-	-	-	-	



Holiday lettings Saint-Leu - Reunion Island "Studio Spot"

7
[Book now](#)

Availability calendar - from : september 2018

Oct	M	Tu	W	Th	F	Sa	Su	M	Tu	W	Th	F	Sa	Su	M	Tu	W	Th	F	Sa	Su	M	Tu	W							
2018	1	2	3	4	5	6	7	8	9	10	11	12	13	14	15	16	17	18	19	20	21	22	23	24	25	26	27	28	29	30	31
	-	-	-	-	-	-	-	-	-	-	-	-	-	-	-	-	-	-	-	-	-	-	-	-	-	-	-	-	-	-	

Nov	Th	F	Sa	Su	M	Tu	W	Th	F	Sa	Su	M	Tu	W	Th	F	Sa	Su	M	Tu	W	Th	F							
2018	1	2	3	4	5	6	7	8	9	10	11	12	13	14	15	16	17	18	19	20	21	22	23	24	25	26	27	28	29	30
	-	-	-	-	-	-	-	-	-	-	-	-	-	-	-	-	-	-	-	-	-	-	-	-	-	-	-	-	-	

[Month : Next >>](#)

Rental rates - Bungalow - from 2 to 4 Person(s)

Rates	Night	Weekend	week	2 weeks	Month
<input type="checkbox"/> Mid season	£48* ↓	-	£288*	£527*	-

↓ Reducing rates

[Book now](#)

Booking conditions

• Reservation

→ Payment made upon reservation :
30% of rental sum
→ Payment balance :
on handing over the keys

• rentals

→ Service charges included
→ Day tax included
→ Cleaning charge on departure included

Accepted methods of payment

• Visa/Delta/Electron • International
Money Order • Bank transfer (wire) •
MasterCard/EuroCard • Cheque •
Travellers Cheques • Cash

[▶ Book now](#)

[▶ Contact the owner](#)

Contact directly the property owners

www.ihacom.co.uk

Advert No.

12480

[>> Book now <<](#)

Contact

Spoken
languages



* Converted at the rate indicated : €100 = \$117.29 = £89.59

Advert No. 12480

www.ihacom.co.uk



[>> HOLIDAY LETTINGS](#)

[BOOK DIRECT WITH THE OWNERS](#)