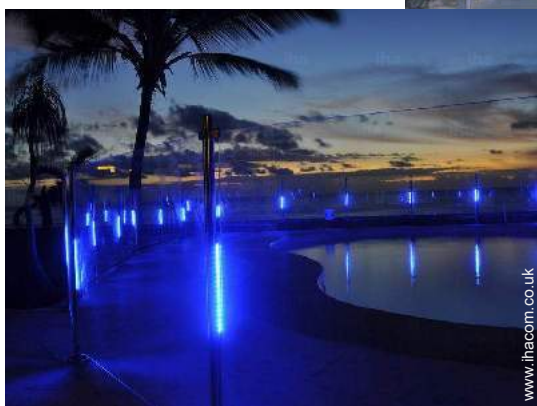


# Holiday lettings Saint-Leu "Leu pied dans l'eau"

Nestled in the hollow of the Bay of Saint-Leu, we welcome our guests in a comfortable and friendly setting of standing.



Meublés de Tourisme (4 stars)

Villa, detached, 1 floor, separate entrance, in a(an) Charming Property

Setting : waterfront

Capacity : from 1 to 24 person(s)  
Bedroom(s) : 12

Saint-Leu

Reunion Island

Advert No. 56539

Reservation : +262 (0) 6 92 69 58 95 (Reunion Island)

www.ihacom.co.uk



## Holiday lettings



Villa, detached, 1 floor, separate entrance, in a(an) Charming Property

- View : panoramic, not overlooked, sea/ocean, swimming pool, fantastic sunset
- Setting : waterfront
- Exposure : West

" Standing and creole charm villas displayed a traditional character while offering a high quality service. Their creole architecture highlights of the typical features of the Réunion habitat: siding wood, four-slope roof, veranda. Tradition meets modernity and we put at your disposal facilities and quality services: linen provided, full kitchen, wireless Internet access, private parking with video surveillance, heated pool and secure, pétanque Court, BBQ area. A bespoke service. the Veloutier, the Lataniers, the coconut and the mango tree villas are flexible and can accommodate 2 to 8 people. The main villa has a capacity of 8 people. In order to meet your expectations, we offer you: woman cleaning, babysitter, high chairs and cots, airport transfer. Jean-Jacques you welcome upon arrival and will be at your disposal to organise your stay. "

## Assets

### • Swimming pool :

Shared swimming pool, unusual (length 40', width 20'), heated, illuminated, steps in, outside shower (open from '01 january' till '31 december')

### • Parking :

Parking uncovered : 8 reserved bay.

### • Advantages :

Pétanque pitch

### • baby equipment :

Baby chair

Benefits :  
Direct access to the beach

## Surroundings & location



Seaside



Fishing



Festival



Culture

" Located on the West coast of the island, at the entrance to the small seaside town of Saint Leu, the catering is uniquely positioned. You will find many tourist activities nearby: Kelonia (Observatory of sea turtles), the Stella Matutina Museum, the Conservatory Mascarin National Botanical, the salt Museum. You can discover the volcanic coastline and the famous blower, indulge in many sports activities: paragliding, mountain biking, climbing, diving, fishing at the wholesale or just enjoy the beach. Surfing fans will enjoy the famous Saint Leu left, spot international reputation. The cultural activity of Saint Leu will seduce you by its diversity and richness: cultural circuits, tours, popular heritage, entertainment, festival... 5 minutes from the road to the Tamarins, Leu Pied Dans l'Eau is also an excellent starting point for your excursions in the island. "

### Leisure

- Leisure activities less than 20 km / 12 miles :

Bathing, snorkelling, scuba diving, surfing, tennis, hiking, mountain bike (path), paragliding, skate board (ramps), volleyball, fishing, deep-sea angling, angling, spear fishing, pétanque pitch

- Supervised :

Sailing school, dive school, tennis school

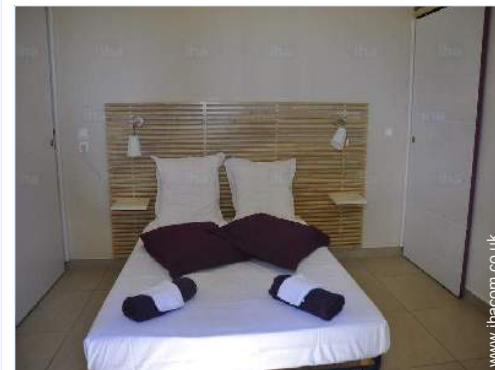
- Attractions and relaxation :

Bar/pub, restaurant, sea world, historical site, museum, festivals

### Surroundings

- Locality :

Heated swimming pool  
Sea/ocean <165'  
Sandy beach 0.62mi.  
Shingle beach <165'  
Surfing spots 330'  
Marina 0.62mi.



bedroom



pool view



view over the sea

### Exterior

- **Ground surface :**  
0.5 acre
- **Outside accommodation :**  
Terrace 100 Sq.ft., covered terrace 100 Sq.ft.
- **Outside setting :**  
Enclosed grounds, tropical garden > 0.25 acre, lawn
- **Outside amenities :**  
BBQ, garden table(s), 8 garden seat(s), 12 sun recliner(s)



surfing spots

### Interior

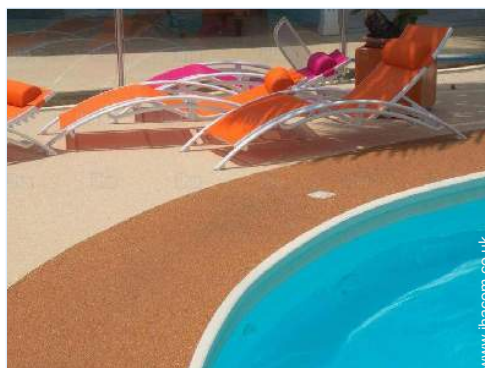
- **Receive up to :**  
from 1 to 24 person(s)
- **Liveable floor area :**  
3,300 Sq.ft.
- **Interior layout :**  
12 bedroom(s)
- **Sleeps - bed(s) :**  
12 double bed(s), 4 sofa bed(s) 2 pers, 2 baby cot(s)
- **Guest facilities :**  
T.V., hi-fi system, wifi, radio alarmclock, hair dryer, fully air conditioned
- **Appliances :**  
Crockery/cuttlery, kitchen utensils, cafetiere, electric coffee maker, electric kettle, toaster, electric hobs, oven, micro-wave oven, extractor hood, refridgerator, dish washer

### Services

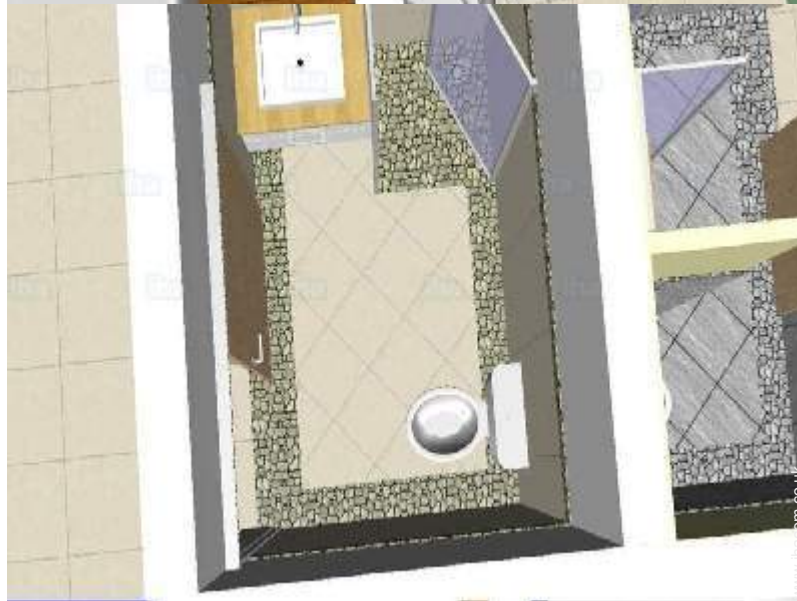
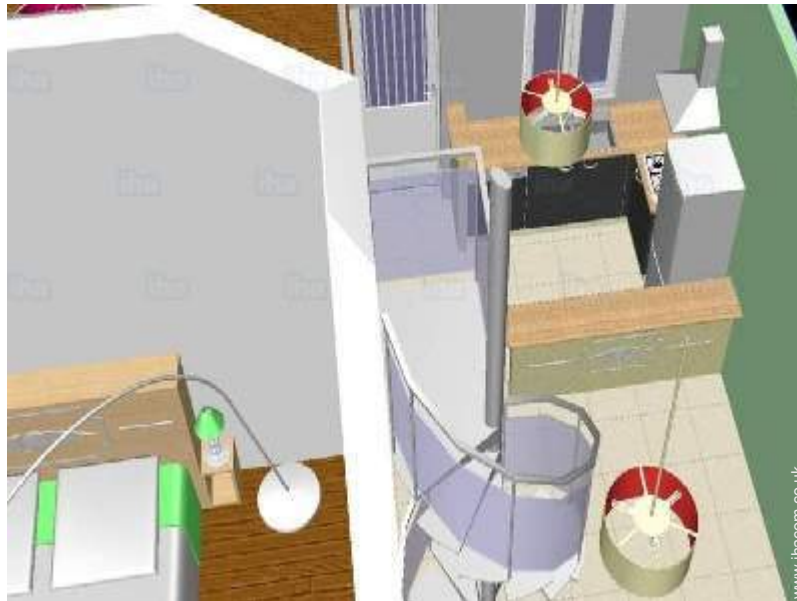
- **Washing :**  
Sheets (1 X / per week), Towels (1 X / per week), Beach towels (1 X / per week), Quilt (s) (1 X / per week), Pillows (1 X / per week)
- **House :**  
Cleaning supplement (+£53\*), Garden/swimming pool maintenance, Parking, Airport transfers supplement

### For your guidance

- **For your guidance**  
No pet allowed  
Mobile telephone network coverage  
Water : hot/cold  
Local voltage supply : 220-240V / 50Hz  
Electricity supply : mains
- **Handicapped people welcome**  
Wheelchair access



Floor plan



Advert No. 56539

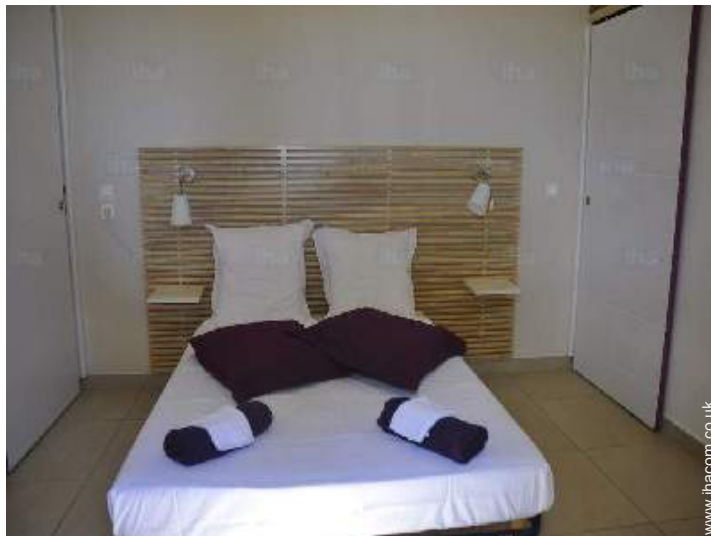
[www.ihacom.co.uk](http://www.ihacom.co.uk)



Photo album - 1



pool view



bedroom

Photo album - 2



view over the sea

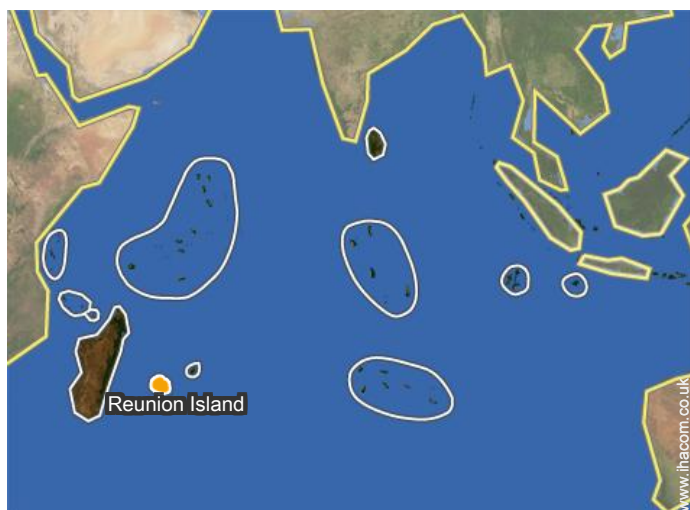


surfing spots



Outside setting

### Location



### Location & Access

" Arriving from the North, Kelonia, the Observatory of sea turtles, and continue for 1.5 km. At the entrance of Saint-Leu, before the bridge, Leu Pied Dans l'Eau is on the right, sea side. Arriving from the South, through the town of Saint-Leu, the bridge, Leu Pied Dans l'Eau is located on the left side sea. "



GPS coordinates in degrees, minutes, seconds: Latitude 21° 9'38"S - Longitude 55°17'13"E ([Dwelling](#))

#### Address

→ 22 rue du Général Lambert  
97436 Saint-Leu

#### • Airport Roland Garros

→ Saint-Denis (Reunion), Reunion Island  
→ Distance : 37,3mi.

#### • Coach station St. Leu

→ Saint-Leu, Reunion Island  
→ Distance : 0.3mi.  
→ Time : 5'

- Saint-Leu : (0.5mi.)
- Saint-Gilles-les-Bains : (9mi.)
- Saint-Denis (Reunion) : (31mi.)

### Contact



Spoken languages



Holiday lettings  
 Saint-Leu - Reunion Island  
**"Leu pied dans l'eau"**

8  
[Book now](#)

Rental rates - Villa - from 1 to 24 Person(s)

Rates	Night	Weekend	week	2 weeks	Month
 Low season	-	£76* (Friday)	£218*	-	-
 High season	-	£76* (Friday)	£218*	-	-

(Check-in day)

[Book now](#)



pool view

bedroom

Booking conditions

• **Reservation**

- Payment made upon reservation : 30% of rental sum
- Payment balance : on handing over the keys
- Deposit required : £445\*

• **rentals**

- Day tax included
- Cleaning charge levy on departure : £53\*
- Anticipated supplement for : - supplementary bed(s)

Accepted methods of payment

- Bank transfer (wire) • Cheque • Bankers draft • Cash

[▶ Book now](#)

[▶ Contact the owner](#)

Contact directly the property owners

[www.ihacom.co.uk](http://www.ihacom.co.uk)

Advert No.

56539

>> [Book now](#) <<

Contact

Spoken languages



\* Converted at the rate indicated : €100 = \$116.85 = £89

Advert No. 56539

[www.ihacom.co.uk](http://www.ihacom.co.uk)

