

# Holiday lettings Saint-Gilles-les-Bains "Corail Bleu"

Villa by the lagoon and Coral Beach, panoramic of lagoon and ocean.



House, detached, single storey, separate entrance, in a(an) Housing estate

Setting : waterfront, heavenly

Capacity : from 1 to 8 person(s)

Bedroom(s) : 3

Room(s) : 5

Saint-Gilles-les-Bains

Reunion Island

Reservation : +262 (0) 6 92 86 60 50 (Reunion Island)

Advert No. 2248

www.ihacom.co.uk



>> HOLIDAY LETTINGS

BOOK DIRECT WITH THE OWNERS

### Holiday lettings



House, detached, single storey, separate entrance, in a(an) Housing estate

- **Ideal for family, all age groups**
- **View :** panoramic, unobscured, sea/ocean, harbour, fantastic sunset, nightlights
- **Setting :** waterfront, heavenly
- **Exposure :** West

" The villa comprises 3 air conditioned rooms including 2 double and 1 quadruple room (canape double bed bz and 2 bunks) (8 people max); 2 bathrooms; 2 porches (a sea view and a garden view); living room (satellite TV and Wifi); kitchen washing machine II; tropical garden; panoramic lagoon and ocean. "

### Assets

- **Parking :**  
Parking uncovered : 2 off road.
- **baby equipment :**  
Baby chair, baby potty

**Benefits :**  
 Direct access to the beach



view from the garden/park

### Surroundings & location



" Real natural aquarium just in front of the villa (do not forget fins masks snorkels) and walk along the white sand beach. From May to September see whales from the porch. The Marina is approximately two kilometres away, several water sports centres. "

#### Leisure

- **Leisure activities less than 20 km / 12 miles :**

Bathing, pedalo, snorkelling, scuba diving, banana boat, water skiing, jet ski, surfing, windsurfing, sailing, kite surfing, canoeing, golf, tennis, squash, riding school, pony club, coastal/forest paths, hiking, mountain bike (path), paragliding, boat trips, horse trekking, mini-golf, ATV/Quad Bike, go-karting, fishing, deep-sea angling, angling, spear fishing

- **Supervised :**

Sailing school, dive school, tennis school, riding school

- **Attractions and relaxation :**

Bar/pub, discotheque, restaurant, cinema, karaoke, park and garden, leisure park, zoo/animal park, sea world, nature reserve, exhibition centre, art gallery, historical site, museum, theatre, summer theatre, local craftshop, casino, health farm, beauticians, fitness centre

### Surroundings

- **Locality :**  
Sea/ocean  
Sandy beach  
Public swimming pool 9mi.  
Public tennis court 1.85mi.  
9 hole golf course 3mi.  
18 hole golf course 3mi.  
Flying clubs 25mi.  
Windsurfing spots 1.85mi.  
Surfing spots 330'  
Watersports centre 1.25mi.  
Mountain range 18.5mi.  
Marina 1.25mi.

- **Amenities :**  
Nursery 0.3mi.  
Village centre 0.3mi.  
Bus stop / bus station 0.3mi.  
Bike/mountain bike hire 0.3mi.  
Scooter/motorbike hire 0.3mi.  
Car rental 0.3mi.  
Boat rental 1.25mi.  
Scuba diving material hire 1.25mi.  
Household linens for hire/laundry services 0.3mi.  
Breadshop 0.3mi.  
Caterer 0.3mi.  
Local shops 0.3mi.

- Supermarket 0.3mi.
- High class retailers 0.3mi.
- Hairdressing salon 0.3mi.
- Internet cafe 0.3mi.
- Post office 0.3mi.
- Bank 0.3mi.
- Cash point 0.3mi.
- Chemist 0.3mi.
- Doctor 0.3mi.
- Nurse 0.3mi.
- Hospital 9mi.
- Dispensing clinic 0.3mi.



view from the garden/park



View from the property



façade

## Interior

- **Receive up to :**

from 1 to 8 person(s)

- **Liveable floor area :**

1,300 Sq.ft.

- **Interior layout :**

5 Room(s), 3 bedroom(s), 2 shower room, 2 WC, living room 270 Sq.ft., sitting room 270 Sq.ft., separate kitchen, dining room, veranda

- **Sleeps - bed(s) :**

2 double bed(s), 1 single bed(s), 1 bunk beds, 1 sofa bed(s) 1 pers, 1 divan 1 pers, 2 baby cot(s)

- **Guest facilities :**

T.V., DVD player, book collection, t.v points, telephone, cable/satelite, internet access, high speed internet access, wifi, wardrobe, Hanging wardrobe, radio alarmclock, hair dryer, partly air conditioned, ceiling paddle fan, Curtains, Blinds

- **Appliances :**

Crockery/cuttlery, kitchen utensils, cafetiere, electric coffee maker, toaster, juicer, food processor, gas cooker, mini-oven, micro-wave oven, extractor hood, refridgerator, freezer, dish washer, washing machine, vacuum cleaner, iron, ironing board

## Exterior

- **Ground surface :**

4,300 Sq.ft.

- **Outside accommodation :**

Terrace 430 Sq.ft., covered terrace 380 Sq.ft.

- **Outside setting :**

Enclosed grounds 4,300 Sq.ft., garden 3,300 Sq.ft., tropical garden 3,300 Sq.ft., lawn 3,300 Sq.ft.

- **Outside amenities :**

BBQ, garden table(s), 8 garden seat(s), parasol, garden seated area, 2 chaise(s) longue(s), 3 sun recliner(s), outside shower facilities, outside toilet facilities



sitting room

## Services

- **Washing :**

Sheets supplement (1 X / per week), Towels supplement (1 X / per week), Linen supplement (1 X / per week), Blanket(s), Pillows

- **House :**

Cleaning supplement, Cleaning on departure supplement, Garden/swimming pool maintenance, Parking

- **Personnel :**

Chef(s) supplement

## For your guidance

- **For your guidance**

Children welcome  
Pets accepted under certain conditions (ask the owner)  
Mobile telephone network coverage, personal transport advisable  
Water : hot/cold  
Local voltage supply : 220V / 60Hz  
Electricity supply : mains



view from the terrace

Holiday lettings  
Saint-Gilles-les-Bains - Reunion Island  
"Corail Bleu"

4  
[Book now](#)

Photo album - 1



view from the garden/park



View from the property



view from the garden/park



façade



view from the terrace

Advert No. 2248

[www.ihacom.co.uk](http://www.ihacom.co.uk)



[>> HOLIDAY LETTINGS](#)

[BOOK DIRECT WITH THE OWNERS](#)

Photo album - 2



sitting room



living room



view from the veranda



veranda



veranda



master bedroom

Photo album - 3



bedroom



shower room



tropical garden



guest bedroom



shower room



view from the kitchen

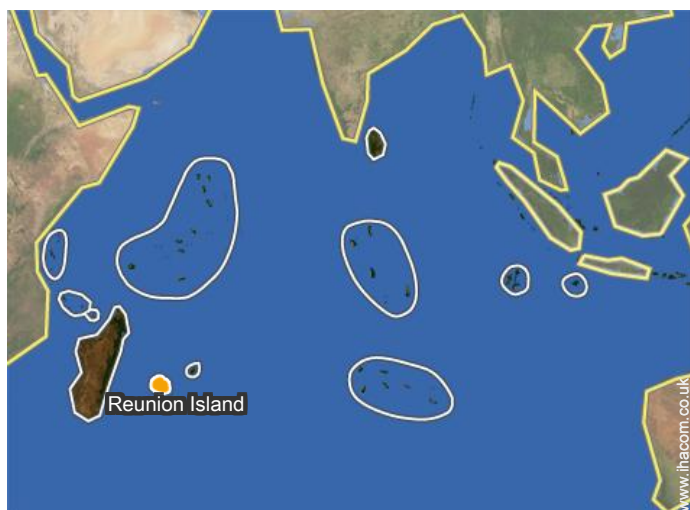


kitchen

Holiday lettings  
Saint-Gilles-les-Bains - Reunion Island  
"Corail Bleu"


7  
[Book now](#)

Location



Location & Access

" 500 metres from the main street of St Gilles les Bains, quiet and residential area, district of Grandfond between the beaches of Roches Noires and Boucan Canot. "

 GPS coordinates in degrees, minutes, seconds: Latitude 21° 2'47"S - Longitude 55°13'11"E ([Dwelling](#))

Address

→ Grand Fond  
97434 Saint-Gilles-les-Bains

• [Airport Roland Garros](#)

→ Saint-Denis (Reunion), Reunion Island  
→ Distance : 21,7mi.

- Saint-Paul : (3mi.)
- Saint-Leu : (9mi.)
- Saint-Gilles-les-Hauts : (3mi.)

Contact

Spoken languages



# Holiday lettings Saint-Gilles-les-Bains - Reunion Island "Corail Bleu"

## Availability calendar - from : august 2018

| Aug  | W | Th | F | Sa | Su | M | Tu | W | Th | F  | Sa | Su | M  | Tu | W  | Th | F  | Sa | Su | M  | Tu | W  | Th | F  |    |    |    |    |    |    |    |
|------|---|----|---|----|----|---|----|---|----|----|----|----|----|----|----|----|----|----|----|----|----|----|----|----|----|----|----|----|----|----|----|
| 2018 | 1 | 2  | 3 | 4  | 5  | 6 | 7  | 8 | 9  | 10 | 11 | 12 | 13 | 14 | 15 | 16 | 17 | 18 | 19 | 20 | 21 | 22 | 23 | 24 | 25 | 26 | 27 | 28 | 29 | 30 | 31 |
|      |   |    |   |    |    |   |    |   |    |    |    |    |    |    |    |    |    |    |    |    | -  | -  | -  | -  | -  | -  | -  | -  | -  | -  | -  |

| Sep  | Sa | Su | M | Tu | W | Th | F | Sa | Su | M  | Tu | W  | Th | F  | Sa | Su | M  | Tu | W  | Th | F  | Sa | Su |    |    |    |    |    |    |    |
|------|----|----|---|----|---|----|---|----|----|----|----|----|----|----|----|----|----|----|----|----|----|----|----|----|----|----|----|----|----|----|
| 2018 | 1  | 2  | 3 | 4  | 5 | 6  | 7 | 8  | 9  | 10 | 11 | 12 | 13 | 14 | 15 | 16 | 17 | 18 | 19 | 20 | 21 | 22 | 23 | 24 | 25 | 26 | 27 | 28 | 29 | 30 |
|      | -  | -  | - | -  | - | -  | - | -  | -  | -  | -  | -  | -  | -  | -  | -  | -  | -  | -  | -  | -  | -  | -  | -  | -  | -  | -  | -  | -  | -  |

| Oct  | M | Tu | W | Th | F | Sa | Su | M | Tu | W  | Th | F  | Sa | Su | M  | Tu | W  | Th | F  | Sa | Su | M  | Tu | W  |    |    |    |    |    |    |    |
|------|---|----|---|----|---|----|----|---|----|----|----|----|----|----|----|----|----|----|----|----|----|----|----|----|----|----|----|----|----|----|----|
| 2018 | 1 | 2  | 3 | 4  | 5 | 6  | 7  | 8 | 9  | 10 | 11 | 12 | 13 | 14 | 15 | 16 | 17 | 18 | 19 | 20 | 21 | 22 | 23 | 24 | 25 | 26 | 27 | 28 | 29 | 30 | 31 |
|      | - | -  | - | -  | - | -  | -  | - | -  | -  | -  | -  | -  | -  | -  | -  | -  | -  | -  | -  | -  | -  | -  | -  | -  | -  | -  | -  | -  | -  |    |

| Nov  | Th | F | Sa | Su | M | Tu | W | Th | F | Sa | Su | M  | Tu | W  | Th | F  | Sa | Su | M  | Tu | W  | Th | F  |    |    |    |    |    |    |    |
|------|----|---|----|----|---|----|---|----|---|----|----|----|----|----|----|----|----|----|----|----|----|----|----|----|----|----|----|----|----|----|
| 2018 | 1  | 2 | 3  | 4  | 5 | 6  | 7 | 8  | 9 | 10 | 11 | 12 | 13 | 14 | 15 | 16 | 17 | 18 | 19 | 20 | 21 | 22 | 23 | 24 | 25 | 26 | 27 | 28 | 29 | 30 |
|      | -  | - | -  | -  | - | -  | - | -  | - | -  | -  | -  | -  | -  | -  | -  | -  | -  | -  | -  | -  | -  | -  | -  | -  | -  | -  | -  | -  | -  |

| Dec  | Sa | Su | M | Tu | W | Th | F | Sa | Su | M  | Tu | W  | Th | F  | Sa | Su | M  | Tu | W  | Th | F  | Sa | Su | M  |    |    |    |    |    |    |    |
|------|----|----|---|----|---|----|---|----|----|----|----|----|----|----|----|----|----|----|----|----|----|----|----|----|----|----|----|----|----|----|----|
| 2018 | 1  | 2  | 3 | 4  | 5 | 6  | 7 | 8  | 9  | 10 | 11 | 12 | 13 | 14 | 15 | 16 | 17 | 18 | 19 | 20 | 21 | 22 | 23 | 24 | 25 | 26 | 27 | 28 | 29 | 30 | 31 |
|      | -  | -  | - | -  | - | -  | - | -  | -  | -  | -  | -  | -  | -  | -  | -  | -  | -  | -  | -  | -  | -  | -  | -  | -  | -  | -  | -  | -  | -  |    |

| Jan  | Tu | W | Th | F | Sa | Su | M | Tu | W | Th | F  | Sa | Su | M  | Tu | W  | Th | F  | Sa | Su | M  | Tu | W  | Th |    |    |    |    |    |    |    |
|------|----|---|----|---|----|----|---|----|---|----|----|----|----|----|----|----|----|----|----|----|----|----|----|----|----|----|----|----|----|----|----|
| 2019 | 1  | 2 | 3  | 4 | 5  | 6  | 7 | 8  | 9 | 10 | 11 | 12 | 13 | 14 | 15 | 16 | 17 | 18 | 19 | 20 | 21 | 22 | 23 | 24 | 25 | 26 | 27 | 28 | 29 | 30 | 31 |
|      | -  | - | -  | - | -  | -  | - | -  | - | -  | -  | -  | -  | -  | -  | -  | -  | -  | -  | -  | -  | -  | -  | -  | -  | -  | -  | -  | -  | -  |    |

| Feb  | F | Sa | Su | M | Tu | W | Th | F | Sa | Su | M  | Tu | W  | Th | F  | Sa | Su | M  | Tu | W  | Th |    |    |    |    |    |    |    |
|------|---|----|----|---|----|---|----|---|----|----|----|----|----|----|----|----|----|----|----|----|----|----|----|----|----|----|----|----|
| 2019 | 1 | 2  | 3  | 4 | 5  | 6 | 7  | 8 | 9  | 10 | 11 | 12 | 13 | 14 | 15 | 16 | 17 | 18 | 19 | 20 | 21 | 22 | 23 | 24 | 25 | 26 | 27 | 28 |
|      | - | -  | -  | - | -  | - | -  | - | -  | -  | -  | -  | -  | -  | -  | -  | -  | -  | -  | -  | -  | -  | -  | -  | -  | -  | -  | -  |

| Mar  | F | Sa | Su | M | Tu | W | Th | F | Sa | Su | M  | Tu | W  | Th | F  | Sa | Su | M  | Tu | W  | Th | F  | Sa | Su |    |    |    |    |    |    |    |
|------|---|----|----|---|----|---|----|---|----|----|----|----|----|----|----|----|----|----|----|----|----|----|----|----|----|----|----|----|----|----|----|
| 2019 | 1 | 2  | 3  | 4 | 5  | 6 | 7  | 8 | 9  | 10 | 11 | 12 | 13 | 14 | 15 | 16 | 17 | 18 | 19 | 20 | 21 | 22 | 23 | 24 | 25 | 26 | 27 | 28 | 29 | 30 | 31 |
|      | - | -  | -  | - | -  | - | -  | - | -  | -  | -  | -  | -  | -  | -  | -  | -  | -  | -  | -  | -  | -  | -  | -  | -  | -  | -  | -  | -  | -  |    |

| Apr  | M | Tu | W | Th | F | Sa | Su | M | Tu | W  | Th | F  | Sa | Su | M  | Tu | W  | Th | F  | Sa | Su | M  | Tu |    |    |    |    |    |    |    |
|------|---|----|---|----|---|----|----|---|----|----|----|----|----|----|----|----|----|----|----|----|----|----|----|----|----|----|----|----|----|----|
| 2019 | 1 | 2  | 3 | 4  | 5 | 6  | 7  | 8 | 9  | 10 | 11 | 12 | 13 | 14 | 15 | 16 | 17 | 18 | 19 | 20 | 21 | 22 | 23 | 24 | 25 | 26 | 27 | 28 | 29 | 30 |
|      | - | -  | - | -  | - | -  | -  | - | -  | -  | -  | -  | -  | -  | -  | -  | -  | -  | -  | -  | -  | -  | -  | -  | -  | -  | -  | -  | -  |    |

| May  | W | Th | F | Sa | Su | M | Tu | W | Th | F  | Sa | Su | M  | Tu | W  | Th | F  | Sa | Su | M  | Tu | W  | Th | F  |    |    |    |    |    |    |    |
|------|---|----|---|----|----|---|----|---|----|----|----|----|----|----|----|----|----|----|----|----|----|----|----|----|----|----|----|----|----|----|----|
| 2019 | 1 | 2  | 3 | 4  | 5  | 6 | 7  | 8 | 9  | 10 | 11 | 12 | 13 | 14 | 15 | 16 | 17 | 18 | 19 | 20 | 21 | 22 | 23 | 24 | 25 | 26 | 27 | 28 | 29 | 30 | 31 |
|      | - | -  | - | -  | -  | - | -  | - | -  | -  | -  | -  | -  | -  | -  | -  | -  | -  | -  | -  | -  | -  | -  | -  | -  | -  | -  | -  | -  | -  |    |





# Holiday lettings Saint-Gilles-les-Bains - Reunion Island "Corail Bleu"

9

[Book now](#)

## Availability calendar - from : may 2019

| June | Sa | Su | M | Tu | W | Th | F | Sa | Su | M  | Tu | W  | Th | F  | Sa | Su | M  | Tu | W  | Th | F  | Sa | Su |    |    |    |    |    |    |    |
|------|----|----|---|----|---|----|---|----|----|----|----|----|----|----|----|----|----|----|----|----|----|----|----|----|----|----|----|----|----|----|
| 2019 | 1  | 2  | 3 | 4  | 5 | 6  | 7 | 8  | 9  | 10 | 11 | 12 | 13 | 14 | 15 | 16 | 17 | 18 | 19 | 20 | 21 | 22 | 23 | 24 | 25 | 26 | 27 | 28 | 29 | 30 |
| -    | -  | -  | - | -  | - | -  | - | -  | -  | -  | -  | -  | -  | -  | -  | -  | -  | -  | -  | -  | -  | -  | -  | -  | -  | -  | -  | -  | -  |    |

| Jul  | M | Tu | W | Th | F | Sa | Su | M | Tu | W  | Th | F  | Sa | Su | M  | Tu | W  | Th | F  | Sa | Su | M  | Tu | W  |    |    |    |    |    |    |    |
|------|---|----|---|----|---|----|----|---|----|----|----|----|----|----|----|----|----|----|----|----|----|----|----|----|----|----|----|----|----|----|----|
| 2019 | 1 | 2  | 3 | 4  | 5 | 6  | 7  | 8 | 9  | 10 | 11 | 12 | 13 | 14 | 15 | 16 | 17 | 18 | 19 | 20 | 21 | 22 | 23 | 24 | 25 | 26 | 27 | 28 | 29 | 30 | 31 |
| -    | - | -  | - | -  | - | -  | -  | - | -  | -  | -  | -  | -  | -  | -  | -  | -  | -  | -  | -  | -  | -  | -  | -  | -  | -  | -  | -  | -  | -  |    |

[Month : Next >>](#)

## Rental rates - House - from 1 to 8 Person(s)

| Rates   | Night          | Weekend | week   | 2 weeks | Month |
|---|----------------|---------|--------|---------|-------|
| <span style="color: green;">■</span> Low season | £134* ↓<br>> 5 | -       | £935*  | -       | -     |
| <span style="color: red;">■</span> High season  | £356* ↓<br>> 5 | -       | £2492* | -       | -     |

↓ Reducing rates > Minimum Night

[Book now](#)

### Booking conditions

**• Reservation**

- Payment made upon reservation : 20% of rental sum
- Payment balance : on handing over the keys
- Deposit required : £890\*

**• rentals**

- Service charges included
- Cleaning charge levy on departure : £45\*

▶ Book now

▶ Contact the owner

### Accepted methods of payment

- Bank transfer (wire) • Cheque • Cash

Contact directly the property owners

[www.ihacom.co.uk](http://www.ihacom.co.uk)

Advert No.

2248

>> Book now <<

### Contact

Spoken languages



\* Converted at the rate indicated : €100 = \$116.85 = £89

Advert No. 2248

[www.ihacom.co.uk](http://www.ihacom.co.uk)

