

Holiday lettings Pinares "Familia Bauzá"



www.ihacom.co.uk



Flat-Apartments 1st floor, separate entrance, in a(an) Traditional accommodation

Setting : pleasant, tranquil

Capacity : from 1 to 4 person(s)

Bedroom(s) : 2

Room(s) : 4



Gîtes de France (4 ears)

S'Illot - Cala Morlanda - Majorca - Balearic Islands
Spain



Advert No. 52282

www.ihacom.co.uk



>> HOLIDAY LETTINGS

BOOK DIRECT WITH THE OWNERS

Holiday lettings



Flat-Apartments 1st floor, separate entrance, in a(an) Traditional accommodation

- **Ideal for family, all age groups**
- **View :** panoramic, unobscured, sea/ocean, mountain, village, street/avenue
- **Setting :** pleasant, tranquil
- **Exposure :** East

Surroundings & location



Leisure

- **Leisure activities less than 20 km / 12 miles :**

Bathing, pedalo, snorkelling, scuba diving, scuba diving (Standard diving dress), water skiing, surfing, golf, tennis, pathway, coastal/forest paths, hiking, kite flying, parascending, boat trips, horse-drawn carriage, horse trekking, donkey rides, mini-golf, hunting, fishing, angling, spear fishing, pétanque pitch

- **Supervised :**

Dive school, tennis school, riding school

- **Attractions and relaxation :**

Bar/pub, discotheque, restaurant, cinema, zoo/animal park, sea world, nature reserve, exhibition centre, art gallery, historical site, museum, theatre, antiques & bric-a-brac, local craftshop, cellar and wine tasting, racecourse, natural spring baths, thermal baths, sauna, health farm, beauticians, fitness centre

Surroundings

- **Locality :**

Sea/ocean 165'
Sandy beach 660'
Shingle beach 990'
Nudist beach 0.3mi.
Creek 990'
Public tennis court 660'
Watersports centre 990'
Cliff 165'
Forest 1.25mi.

- **Amenities :**

Nursery 0.3mi.
Village centre <165'
Bus stop / bus station 330'
Bike/mountain bike hire 0.5mi.
Scooter/motorbike hire
Car rental
Local shops 660'
Supermarket 660'
High class retailers 660'
Hairdressing salon 330'
Internet cafe 0.3mi.
Chemist 990'
Doctor 0.3mi.
Nurse 0.3mi.
Hospital 9mi.
Dispensing clinic 0.3mi.



view from the terrace



view from the flat



façade



dining room

Interior

- **Receive up to :**
from 1 to 4 person(s)
- **Liveable floor area :**
750 Sq.ft.
- **Interior layout :**
4 Room(s), 2 bedroom(s), 1 bathroom, separate kitchen, dining room, laundry room
- **Sleeps - bed(s) :**
1 double bed(s), 2 single bed(s), 1 baby cot (s)
- **Guest facilities :**
T.V., videoplayer, DVD player, t.v points, cable/satelite, wifi, wardrobe, cupboard, Hanging wardrobe, hair dryer, partly air conditioned, fully air conditioned, mobile cool air fan, electric heating, Glazed in area, Curtains, Blinds, entry phone system
- **Appliances :**
Crockery/cuttlery, kitchen utensils, cafetiere, electric kettle, toaster, juicer, electric cooker, electric hobs, oven, micro-wave oven, extractor hood, refridgerator, freezer, washing machine, iron, ironing board

Exterior

- **Outside accommodation :**
Terrace 172 Sq.ft., roof terrace 750 Sq.ft., balcony 43 Sq.ft., sundeck 323 Sq.ft.



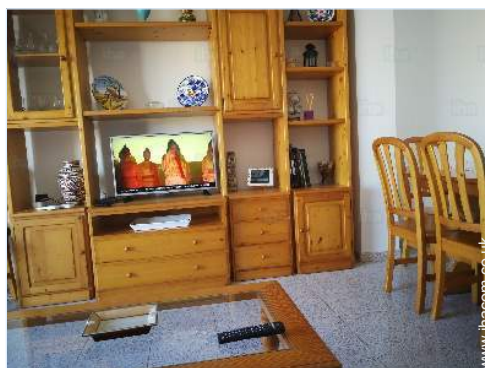
kitchen

Services

- **Washing :**
Sheets (6 X / per week), Towels (4 X / per week), Linen (6 X / per week), Blanket(s) (3 X / per week), Quilt(s) (3 X / per week), Pillows (4 X / per week)
- **House :**
Cleaning on departure, Airport transfers supplement (+£55*)

For your guidance

- **For your guidance**
Children welcome
Mobile telephone network coverage
Water not drinkable
Local voltage supply : 220-240V / 50Hz
Electricity supply : mains



furnishings

Photo album - 1



view from the terrace



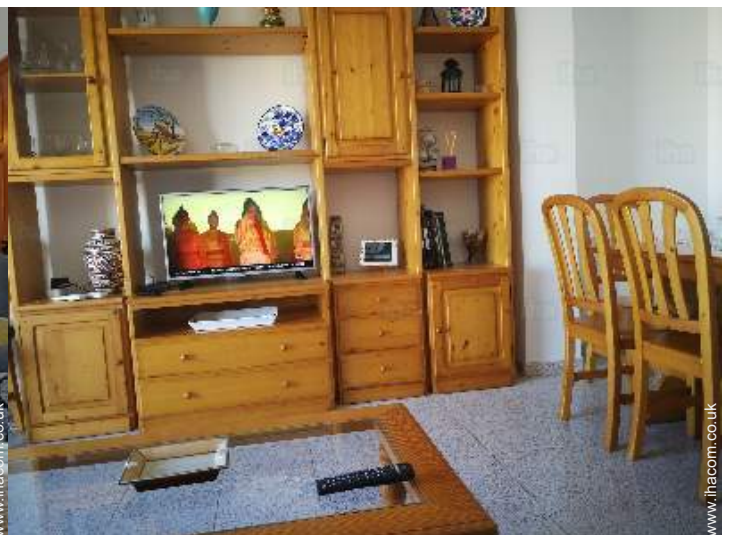
façade



view from the flat



dining room



furnishings

Photo album - 2



kitchen



kitchen



double bed(s)



bedroom



bedroom



bedroom



bathroom



bathroom



sandy beach



sandy beach

Photo album - 3



Seaside



Summer



sea view



watersports centre



view over the sea



sleeping nook



view from the balcony



village centre



pétanque pitch



sandy beach



historical site

Location



Location & Access



GPS coordinates in degrees, minutes, seconds: Latitude 39°33'41"N - Longitude 3° 22'26"E ([Dwelling](#))

Address

→ Carrer de la Rosa, 3-1°
07687 S'Illot - Cala Morlanda

• Airport Palma de Mallorca

→ Palma de Mallorca, Majorca, Balearic Islands, Spain
→ Distance : 40mi.
→ Time : 1h

• Sea port Palma de Mallorca

→ Palma de Mallorca, Majorca, Balearic Islands, Spain
→ Distance : 40mi.
→ Time : 1h

- Manacor : (8.7mi.)
- Cala Bona : (3mi.)
- Son Servera : (4.5mi.)

Contact

Spoken languages



Holiday lettings Pinares - Spain "Familia Bauzá"

8

[Book now](#)

Availability calendar - from : september 2019

Sep	Su	M	Tu	W	Th	F	Sa	Su	M	Tu	W	Th	F	Sa	Su	M	Tu	W	Th	F	Sa	Su	M							
2019	1	2	3	4	5	6	7	8	9	10	11	12	13	14	15	16	17	18	19	20	21	22	23	24	25	26	27	28	29	30

Oct	Tu	W	Th	F	Sa	Su	M	Tu	W	Th	F	Sa	Su	M	Tu	W	Th	F	Sa	Su	M	Tu	W	Th							
2019	1	2	3	4	5	6	7	8	9	10	11	12	13	14	15	16	17	18	19	20	21	22	23	24	25	26	27	28	29	30	31

Nov	F	Sa	Su	M	Tu	W	Th	F	Sa	Su	M	Tu	W	Th	F	Sa	Su	M	Tu	W	Th	F	Sa							
2019	1	2	3	4	5	6	7	8	9	10	11	12	13	14	15	16	17	18	19	20	21	22	23	24	25	26	27	28	29	30

Dec	Su	M	Tu	W	Th	F	Sa	Su	M	Tu	W	Th	F	Sa	Su	M	Tu	W	Th	F	Sa	Su	M	Tu							
2019	1	2	3	4	5	6	7	8	9	10	11	12	13	14	15	16	17	18	19	20	21	22	23	24	25	26	27	28	29	30	31

Jan	W	Th	F	Sa	Su	M	Tu	W	Th	F	Sa	Su	M	Tu	W	Th	F	Sa	Su	M	Tu	W	Th	F							
2020	1	2	3	4	5	6	7	8	9	10	11	12	13	14	15	16	17	18	19	20	21	22	23	24	25	26	27	28	29	30	31

Feb	Sa	Su	M	Tu	W	Th	F	Sa	Su	M	Tu	W	Th	F	Sa	Su	M	Tu	W	Th	F	Sa								
2020	1	2	3	4	5	6	7	8	9	10	11	12	13	14	15	16	17	18	19	20	21	22	23	24	25	26	27	28	29	

Mar	Su	M	Tu	W	Th	F	Sa	Su	M	Tu	W	Th	F	Sa	Su	M	Tu	W	Th	F	Sa	Su	M	Tu							
2020	1	2	3	4	5	6	7	8	9	10	11	12	13	14	15	16	17	18	19	20	21	22	23	24	25	26	27	28	29	30	31

Apr	W	Th	F	Sa	Su	M	Tu	W	Th	F	Sa	Su	M	Tu	W	Th	F	Sa	Su	M	Tu	W	Th								
2020	1	2	3	4	5	6	7	8	9	10	11	12	13	14	15	16	17	18	19	20	21	22	23	24	25	26	27	28	29	30	

May	F	Sa	Su	M	Tu	W	Th	F	Sa	Su	M	Tu	W	Th	F	Sa	Su	M	Tu	W	Th	F	Sa	Su							
2020	1	2	3	4	5	6	7	8	9	10	11	12	13	14	15	16	17	18	19	20	21	22	23	24	25	26	27	28	29	30	31

June	M	Tu	W	Th	F	Sa	Su	M	Tu	W	Th	F	Sa	Su	M	Tu	W	Th	F	Sa	Su	M	Tu								
2020	1	2	3	4	5	6	7	8	9	10	11	12	13	14	15	16	17	18	19	20	21	22	23	24	25	26	27	28	29	30	

 Reserved

Holiday lettings Majorca - Balearic Islands "Familia Bauzá"

9

[Book now](#)

Availability calendar - from : june 2020





Jul	W	Th	F	Sa	Su	M	Tu	W	Th	F	Sa	Su	M	Tu	W	Th	F	Sa	Su	M	Tu	W	Th	F							
2020	1	2	3	4	5	6	7	8	9	10	11	12	13	14	15	16	17	18	19	20	21	22	23	24	25	26	27	28	29	30	31

Aug	Sa	Su	M	Tu	W	Th	F	Sa	Su	M	Tu	W	Th	F	Sa	Su	M	Tu	W	Th	F	Sa	Su	M							
2020	1	2	3	4	5	6	7	8	9	10	11	12	13	14	15	16	17	18	19	20	21	22	23	24	25	26	27	28	29	30	31

 Reserved

[Month : Next >>](#)

Rental rates - Flat-Apartments - from 1 to 4 Person(s)

Rates	Night	Weekend	week	2 weeks	Month
 Low season	£59* > 7	-	£414*	£764*	£1474*
 Mid season	£66* ↓ > 7	-	£459*	£841*	£1638*
 High season	£84* ↓ > 7	-	£586*	£1108*	£2102*
 Promotional period	£77* ↓ > 7	-	£541*	£1006*	£2020*

↓ Reducing rates > Minimum Night

[Book now](#)

Booking conditions

- **Reservation**

→ Payment made upon reservation : 30% of rental sum

- **rentals**

→ Service charges included

Accepted methods of payment

- Bank transfer (wire)

[▶ Book now](#)

[▶ Contact the owner](#)

Contact directly the property owners

www.ihacom.co.uk

Advert No.

52282

[>> Book now <<](#)

Contact

Spoken languages



* Converted at the rate indicated : €100 = \$110 = £91

Advert No. 52282

www.ihacom.co.uk



[>> HOLIDAY LETTINGS](#)

[BOOK DIRECT WITH THE OWNERS](#)