

Holiday lettings

Neustift im Stubaital

"Ferienwohnung Scheibe"

Self catering holiday apartment in a quiet but central location. Close to the swimming pool and just 3 minutes to the ski bus. Bakery, supermarket, restaurants very close.



Flat-Apartments ground floor, shared entrance, in a(an) Estate 2 floors

Setting : suitable for a relaxing break, peaceful

Capacity : from 4 to 6 person(s)
Bedroom(s) : 3



Solares de Portugal (Quintas e Herdades)
Case & Appartamenti per vacanze (3 Suns)

Neustift im Stubaital - Tyrol

Austria

Reservation : +43 (0) 52262496 (Austria)

Advert No. 65587

www.ihacom.co.uk



Holiday lettings



Flat-Apartments ground floor, shared entrance, in a(an) Estate 2 floors

- **Ideal for family, all age groups**
- **View** : panoramic, unobscured, not overlooked, mountain, forest, river
- **Setting** : suitable for a relaxing break, peaceful
- **Exposure** : South-west

" Ground floor apartment for 4-6 persons (up to 8 sleeps), fully equipped kitchen with two refrigerators. Dishwasher and washing machine available. Two independent of each other bath rooms with each bath/WC or shower/WC. Cozy dining room next to the kitchen with cable TV, spacious living room with tiled stove, cable TV and several seats. Direct exit to the terrace and lawn (ca, 270 sqm). Two separate bedrooms with one associated with an open passage (curtain) with a third bedroom. Two beds are available in all three rooms. Electric heating in all rooms. "

Assets

- **Parking** :
Covered parking : 1 closed individual place (s). Parking uncovered : 1 off road.
- **Advantages** :
Ski locker, ski boot warmer, ping-pong table, 4 ping-pong bats, squash court, mini-golf, 19 bike(s)
- **baby equipment** :
Baby chair, baby changer

Surroundings & location



Culture

" Views on the Stubai mountain world, starting point for many walks, hikes, hut hikes or mountain tours. Via ferratas for beginners and brave and professional climbers and mountain guides. Near airport. The Alpine city of Innsbruck is located twenty minutes by car, the nearest golf course as well. Swarovski Crystal and the Alpine Zoo, invite you to visit. Mini Golf and paragliding, horseriding or swimming. "

Leisure

- **Leisure activities less than 20 km / 12 miles** :

Alpine skiing, cross-country skiing, off-piste skiing, ski-trekking, snowboarding, luge (run), ice-skating, rafting, golf, tennis, squash, pathway, coastal/forest paths, hiking, climbing, rock climbing, mountain bike (path), hang-gliding, paragliding, flying (club), glider (club), horse-drawn carriage, horse trekking, mini-golf, hunting, angling

- **Supervised** :

Ski school, child's ski area, tennis school

Surroundings

- **Locality** :

Ski slopes 0.3mi.
Ski lifts 0.3mi.
Ice skating rink 0.5mi.
Heated swimming pool 990'
Public swimming pool 990'
18 hole golf course 12.5mi.
Flying clubs 15.5mi.
Waterfall 3mi.
River 165'
Stretch of water 3mi.
Forest 0.3mi.
Via ferrata-alpinism 1.25mi.



living room



dining room



bedroom

Interior

- **Receive up to :**
from 4 to 6 person(s) (4 adults, 2 children)
- **Liveable floor area :**
1,076 Sq.ft.
- **Interior layout :**
3 bedroom(s), 2 bathroom, 2 WC, living room 270 Sq.ft., separate kitchen, dining room, dining area, cosy nook, tv room, pantry
- **Sleeps - bed(s) :**
2 double bed(s), 2 bunk beds, 2 sofa bed(s)
1 pers
- **Guest facilities :**
Fireplace, T.V., t.v points, cable/satelite, internet access, high speed internet access, wardrobe, cupboard, Hanging wardrobe, electric heating, wood-burning stove, Curtains, Double glazed, entry phone system
- **Appliances :**
Crockery/cuttlery, kitchen utensils, cafetiere, electric kettle, electric cooker, electric hobs, micro-wave oven, extractor hood, refridgerator, dish washer, washing machine, vacuum cleaner

Exterior

- **Ground surface :**
3,300 Sq.ft.
- **Outside accommodation :**
Terrace 430 Sq.ft., sundeck 430 Sq.ft.
- **Outside setting :**
Lawn 2,150 Sq.ft.
- **Outside amenities :**
4 garden seat(s), parasol, sun recliner(s)



bunk beds

Services

- **Washing :**
Sheets, Towels, Linen, Blanket(s), Pillows
- **House :**
Cleaning on departure supplement (+£44*), Parking

For your guidance

- **For your guidance**
Children welcome
Pets accepted under certain conditions (ask the owner)
Mobile telephone network coverage
Water : hot/cold
Local voltage supply : 220-240V / 50Hz
Electricity supply : mains
- **Handicapped people welcome**
Wheelchair access



living room

Floor plan



www.ihacom.co.uk

Photo album - 1



kitchen



dining room



living room



bedroom



living room



bunk beds

Photo album - 2



bedroom



large bedroom



bedroom



separate kitchen



separate kitchen



living room



dining room

Photo album - 3



small bedroom



sundeck



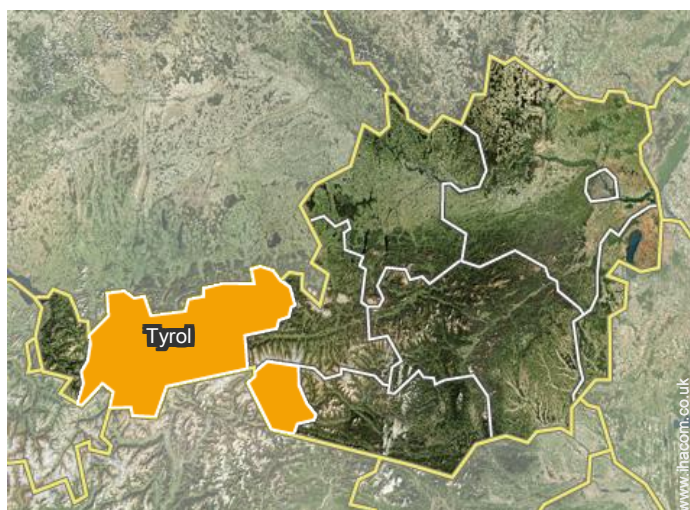
overall view



view from the living room




Location



Location & Access

" Via the Brenner motorway to Schönberg, then continue on the main road to Neustift Scheibe. Multiple bus connection from the main train station, taxi services. "

 GPS coordinates in degrees, minutes, seconds: Latitude 47°6'48"N - Longitude 11°18'32"E ([Dwelling](#))

Address

→ Schulweg 14
Scheibe 30
6167 Neustift im Stubaital

• Innsbruck : (16mi.)

• Motorway (junction) A13 - Brennerautobahn

→ Schönberg im Stubaital, Tyrol, Austria
→ Distance : 7,5mi.
→ Time : 20'

• Coach station Stubaitalbus

→ Innsbruck, Tyrol, Austria
→ Distance : 12.5mi.

• Airport Innsbruck Kranebitten

→ Innsbruck, Tyrol, Austria
→ Distance : 16mi.

Contact

Spoken languages



Holiday lettings Neustift im Stubaital - Austria "Ferienwohnung Scheibe"

[Book now](#)

Availability calendar - from : may 2018

May	Tu	W	Th	F	Sa	Su	M	Tu	W	Th	F	Sa	Su	M	Tu	W	Th	F	Sa	Su	M	Tu	W	Th							
2018	1	2	3	4	5	6	7	8	9	10	11	12	13	14	15	16	17	18	19	20	21	22	23	24	25	26	27	28	29	30	31
																					-	-	-	-	-	-	-	-	-	-	-

June	F	Sa	Su	M	Tu	W	Th	F	Sa	Su	M	Tu	W	Th	F	Sa	Su	M	Tu	W	Th	F	Sa							
2018	1	2	3	4	5	6	7	8	9	10	11	12	13	14	15	16	17	18	19	20	21	22	23	24	25	26	27	28	29	30
	-	-	-	-	-	-	-	-	-	-	-	-	-	-	-	-	-	-	-	-	-	-	-	-	-	-	-	-	-	-

Jul	Su	M	Tu	W	Th	F	Sa	Su	M	Tu	W	Th	F	Sa	Su	M	Tu	W	Th	F	Sa	Su	M	Tu							
2018	1	2	3	4	5	6	7	8	9	10	11	12	13	14	15	16	17	18	19	20	21	22	23	24	25	26	27	28	29	30	31
	-	-	-	-	-	-	-	-	-	-	-	-	-	-	-	-	-	-	-	-	-	-	-	-	-	-	-	-	-	-	

Aug	W	Th	F	Sa	Su	M	Tu	W	Th	F	Sa	Su	M	Tu	W	Th	F	Sa	Su	M	Tu	W	Th	F	Sa	Su	M	Tu	W	Th	F	
2018	1	2	3	4	5	6	7	8	9	10	11	12	13	14	15	16	17	18	19	20	21	22	23	24	25	26	27	28	29	30	31	
	-	-	-	-	-	-	-	-	-	-	-	-	-	-	-	-	-	-	-	-	-	-	-	-	-	-	-	-	-	-	-	-

Sep	Sa	Su	M	Tu	W	Th	F	Sa	Su	M	Tu	W	Th	F	Sa	Su	M	Tu	W	Th	F	Sa	Su							
2018	1	2	3	4	5	6	7	8	9	10	11	12	13	14	15	16	17	18	19	20	21	22	23	24	25	26	27	28	29	30
	-	-	-	-	-	-	-	-	-	-	-	-	-	-	-	-	-	-	-	-	-	-	-	-	-	-	-	-	-	-

Oct	M	Tu	W	Th	F	Sa	Su	M	Tu	W	Th	F	Sa	Su	M	Tu	W	Th	F	Sa	Su	M	Tu	W	Th	F	Sa	Su	M	Tu	W
2018	1	2	3	4	5	6	7	8	9	10	11	12	13	14	15	16	17	18	19	20	21	22	23	24	25	26	27	28	29	30	31
	-	-	-	-	-	-	-	-	-	-	-	-	-	-	-	-	-	-	-	-	-	-	-	-	-	-	-	-	-	-	-

Nov	Th	F	Sa	Su	M	Tu	W	Th	F	Sa	Su	M	Tu	W	Th	F	Sa	Su	M	Tu	W	Th	F	Sa	Su	M	Tu	W	Th	F
2018	1	2	3	4	5	6	7	8	9	10	11	12	13	14	15	16	17	18	19	20	21	22	23	24	25	26	27	28	29	30
	-	-	-	-	-	-	-	-	-	-	-	-	-	-	-	-	-	-	-	-	-	-	-	-	-	-	-	-	-	-

Dec	Sa	Su	M	Tu	W	Th	F	Sa	Su	M	Tu	W	Th	F	Sa	Su	M	Tu	W	Th	F	Sa	Su	M							
2018	1	2	3	4	5	6	7	8	9	10	11	12	13	14	15	16	17	18	19	20	21	22	23	24	25	26	27	28	29	30	31
	-	-	-	-	-	-	-	-	-	-	-	-	-	-	-	-	-	-	-	-	-	-	-	-	-	-	-	-	-	-	

Jan	Tu	W	Th	F	Sa	Su	M	Tu	W	Th	F	Sa	Su	M	Tu	W	Th	F	Sa	Su	M	Tu	W	Th							
2019	1	2	3	4	5	6	7	8	9	10	11	12	13	14	15	16	17	18	19	20	21	22	23	24	25	26	27	28	29	30	31
	-	-	-	-	-	-	-	-	-	-	-	-	-	-	-	-	-	-	-	-	-	-	-	-	-	-	-	-	-	-	

Feb	F	Sa	Su	M	Tu	W	Th	F	Sa	Su	M	Tu	W	Th	F	Sa	Su	M	Tu	W	Th							
2019	1	2	3	4	5	6	7	8	9	10	11	12	13	14	15	16	17	18	19	20	21	22	23	24	25	26	27	28
	-	-	-	-	-	-	-	-	-	-	-	-	-	-	-	-	-	-	-	-	-	-	-	-	-	-	-	-



Holiday lettings Neustift im Stubaital - Austria "Ferienwohnung Scheibe"

10
[Book now](#)

Availability calendar - from : february 2019

Mar	F	Sa	Su	M	Tu	W	Th	F	Sa	Su	M	Tu	W	Th	F	Sa	Su	M	Tu	W	Th	F	Sa	Su							
2019	1	2	3	4	5	6	7	8	9	10	11	12	13	14	15	16	17	18	19	20	21	22	23	24	25	26	27	28	29	30	31
	-	-	-	-	-	-	-	-	-	-	-	-	-	-	-	-	-	-	-	-	-	-	-	-	-	-	-	-	-		

Apr	M	Tu	W	Th	F	Sa	Su	M	Tu	W	Th	F	Sa	Su	M	Tu	W	Th	F	Sa	Su	M	Tu							
2019	1	2	3	4	5	6	7	8	9	10	11	12	13	14	15	16	17	18	19	20	21	22	23	24	25	26	27	28	29	30
	-	-	-	-	-	-	-	-	-	-	-	-	-	-	-	-	-	-	-	-	-	-	-	-	-	-	-	-	-	

[Month : Next >>](#)

Rental rates - Flat-Apartments - from 4 to 6 Person(s)

Rates	Night	Weekend	week	2 weeks	Month
■ Low season	£107* > 7	-	£747* (Saturday)	-	-
■ High season	£116* ↓ (Saturday) > 7	-	£809* (Saturday)	-	-
■ Promotional period	£107* (Saturday) > 6	-	-	-	-

↓ Reducing rates (Check-in day) > Minimum Night

[Book now](#)

Booking conditions

• Reservation

→ Payment made upon reservation : £178*
→ Payment balance :
on handing over the keys

• rentals

→ Service charges included
→ Day tax in addition
→ Cleaning charge levy on departure : £44*
→ Anticipated supplement for :
- animals
- supplementary bed(s)
- firewood

Accepted methods of payment

• International Money Order • Bank transfer (wire) • Cash

[▶ Book now](#)

[▶ Contact the owner](#)

Contact directly the property owners

www.ihacom.co.uk

Advert No.

65587

[>> Book now <<](#)

Contact

Spoken languages



* Converted at the rate indicated : €100 = \$123.46 = £88.94

Advert No. 65587

www.ihacom.co.uk



[>> HOLIDAY LETTINGS](#)

[BOOK DIRECT WITH THE OWNERS](#)