

Holiday lettings Most na Soči Country House



Country House, detached, 2 floors,
separate entrance, in a(an) Charming
Property

Setting : rural, mountainy

Capacity : from 2 to 14 person(s)

Bedroom(s) : 5

Most na Soči - Julian Alps

Slovenia

Reservation : +386 (0) 31 607 237 (Slovenia)

Advert No. 72913

www.ihacom.co.uk



Holiday lettings



Country House, detached, 2 floors, separate entrance, in a(an) Charming Property

- **Ideal for all age groups**
- **View :** panoramic, mountain, country side, farmland, fantastic sunset
- **Setting :** rural, mountainy

Assets

- **Parking :**
Parking uncovered
- **Advantages :**
Table football, basket ball net
- **baby equipment :**
Baby chair

Surroundings & location



Countryside



Fishing



Culture

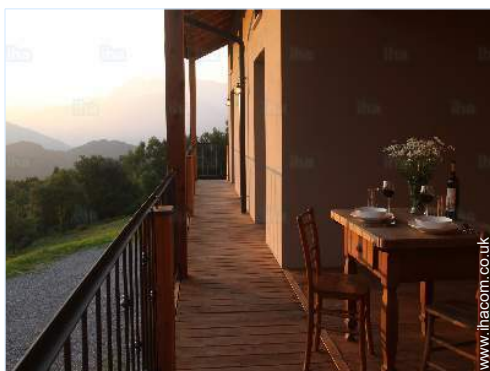
Leisure

- **Leisure activities less than 20 km / 12 miles :**

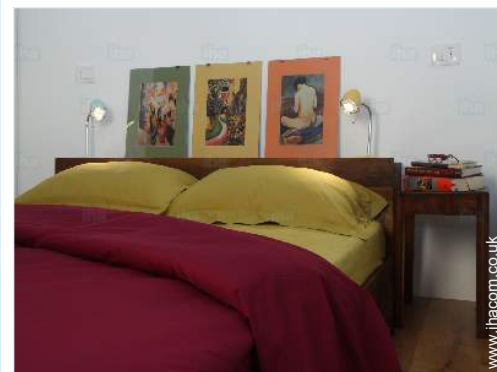
Canoeing, canyoning, rafting, coastal/forest paths, hiking, rock climbing, mountain bike (path), parachuting, paragliding, boat trips, basketball, hunting, fishing

Surroundings

- **Locality :**
Ski lifts 25mi.
Rocky beach 3mi.
9 hole golf course 18.5mi.
Watersports centre 6mi.
River rapids 15.5mi.
River 2.5mi.
Lake 2.5mi.
Forest 330'
Mountain range 9mi.



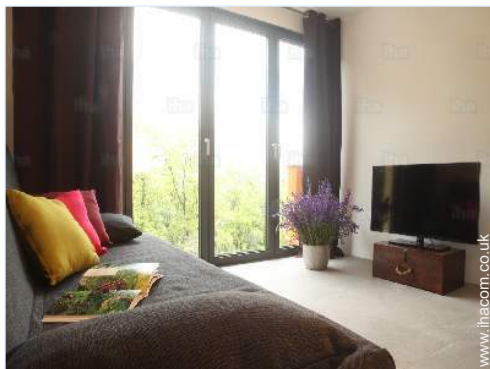
covered terrace



bedroom



view over the mountain



living room

Interior

- **Receive up to :**
from 2 to 14 person(s)
- **Liveable floor area :**
2,700 Sq.ft.
- **Interior layout :**
5 bedroom(s), 2 shower room, living room, sitting room, separate kitchen, dining area, tv room, laundry room, veranda
- **Sleeps - bed(s) :**
5 double bed(s), 1 king-size bed(s), 1 sofa bed(s) 2 pers
- **Guest facilities :**
T.V., cable/satellite, internet access, wifi, central heating
- **Appliances :**
Electric kettle, toaster, electric cooker, oven, refrigerator, washing machine, vacuum cleaner, iron, ironing board

Exterior

- **Ground surface :**
2.5 acres
- **Outside accommodation :**
Covered terrace 430 Sq.ft., balcony 215 Sq.ft.
- **Outside setting :**
Enclosed grounds 2.5 acres, garden 4,300 Sq.ft.
- **Outside amenities :**
BBQ



shower room

Services

- **House :**
Cleaning on departure, Parking

For your guidance

- **For your guidance**
Children welcome
Pets accepted
Present on site : pets
Non smoking rental, mobile telephone network coverage, personal transport advisable
Water : hot/cold
Local voltage supply : 220-240V / 50Hz
Electricity supply : mains



kitchen

Photo album - 1



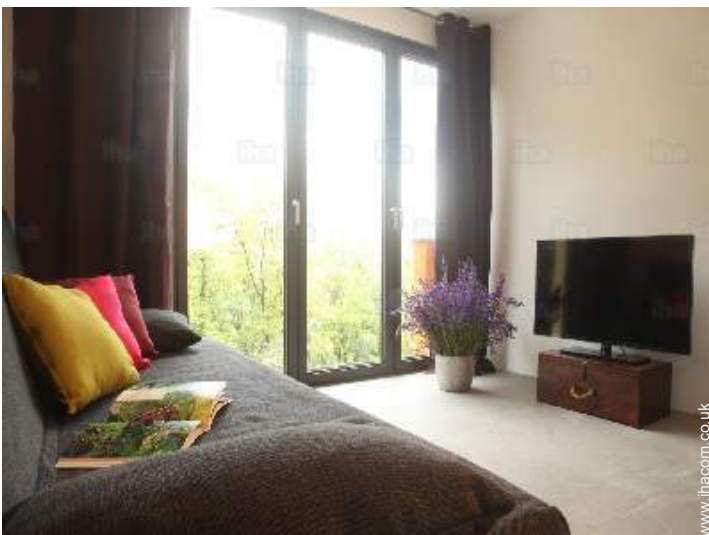
covered terrace



view over the mountain



bedroom



living room



kitchen

Photo album - 2



shower room



mountain bike (path)



mountain bike (path)



paragliding



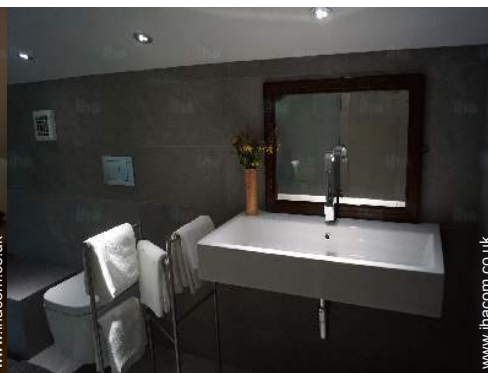
fishing



bedroom



bedroom



shower room



Kitchen Area

Photo album - 3



kitchen



kitchen



living room



balcony



view from the flat



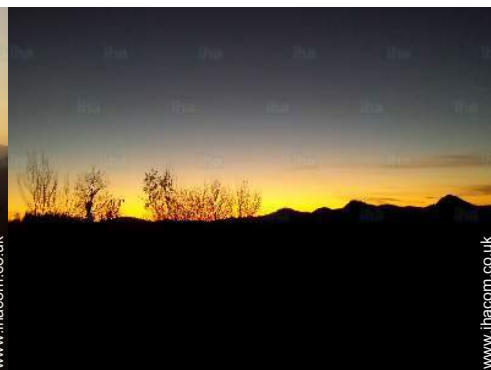
Autumn



Countryside



Outside amenities

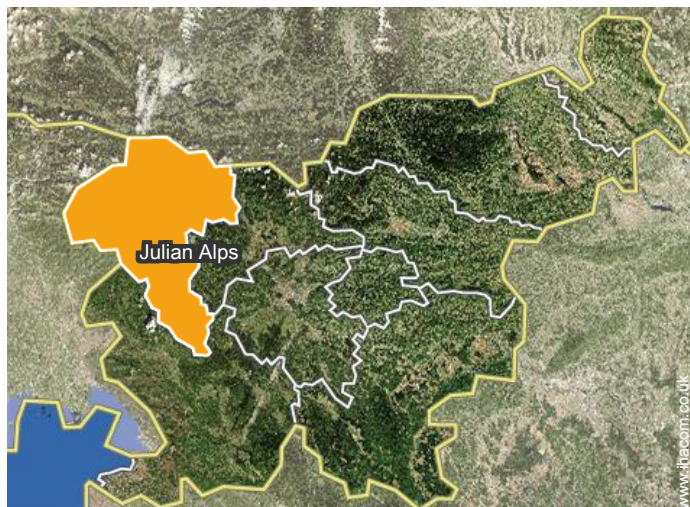


View from the property



View from the property

Location



Location & Access



GPS coordinates in degrees, minutes, seconds: Latitude 46°7'58"N - Longitude 13° 44'41"E (Dwelling)

Address

→ Tolminski Lom 30
5216 Most na Soči

• Airport Ljubljana Jože Pučnik

→ Ljubljana, Central Slovenia, Slovenia
→ Distance : 50mi.

• Airport Friuli Venezia Giulia

→ Trieste, Province of Trieste, Friuli Venezia Giulia, Italy
→ Distance : 43,5mi.

• Airport Venice Marco Polo

→ Venice, Province of Venice, Veneto, Italy
→ Distance : 112mi.
→ Time : 2h

• Tolmin : (3mi.)

- Piran : (87mi.)
- Venice : (118mi.)

Contact

Spoken languages



Holiday lettings Julian Alps - Slovenia Country House

Availability calendar - from : december 2018

Dec	Sa	Su	M	Tu	W	Th	F	Sa	Su	M	Tu	W	Th	F	Sa	Su	M	Tu	W	Th	F	Sa	Su	M							
2018	1	2	3	4	5	6	7	8	9	10	11	12	13	14	15	16	17	18	19	20	21	22	23	24	25	26	27	28	29	30	31

Jan	Tu	W	Th	F	Sa	Su	M	Tu	W	Th	F	Sa	Su	M	Tu	W	Th	F	Sa	Su	M	Tu	W	Th							
2019	1	2	3	4	5	6	7	8	9	10	11	12	13	14	15	16	17	18	19	20	21	22	23	24	25	26	27	28	29	30	31
	-	-	-	-	-	-	-	-	-	-	-	-	-	-	-	-	-	-	-	-	-	-	-	-	-	-	-	-	-		

Feb	F	Sa	Su	M	Tu	W	Th	F	Sa	Su	M	Tu	W	Th	F	Sa	Su	M	Tu	W	Th							
2019	1	2	3	4	5	6	7	8	9	10	11	12	13	14	15	16	17	18	19	20	21	22	23	24	25	26	27	28
	-	-	-	-	-	-	-	-	-	-	-	-	-	-	-	-	-	-	-	-	-	-	-	-	-	-	-	-

Mar	F	Sa	Su	M	Tu	W	Th	F	Sa	Su	M	Tu	W	Th	F	Sa	Su	M	Tu	W	Th	F	Sa	Su							
2019	1	2	3	4	5	6	7	8	9	10	11	12	13	14	15	16	17	18	19	20	21	22	23	24	25	26	27	28	29	30	31
	-	-	-	-	-	-	-	-	-	-	-	-	-	-	-	-	-	-	-	-	-	-	-	-	-	-	-	-	-		

Apr	M	Tu	W	Th	F	Sa	Su	M	Tu	W	Th	F	Sa	Su	M	Tu	W	Th	F	Sa	Su	M	Tu							
2019	1	2	3	4	5	6	7	8	9	10	11	12	13	14	15	16	17	18	19	20	21	22	23	24	25	26	27	28	29	30
	-	-	-	-	-	-	-	-	-	-	-	-	-	-	-	-	-	-	-	-	-	-	-	-	-	-	-	-	-	

May	W	Th	F	Sa	Su	M	Tu	W	Th	F	Sa	Su	M	Tu	W	Th	F	Sa	Su	M	Tu	W	Th	F							
2019	1	2	3	4	5	6	7	8	9	10	11	12	13	14	15	16	17	18	19	20	21	22	23	24	25	26	27	28	29	30	31
	-	-	-	-	-	-	-	-	-	-	-	-	-	-	-	-	-	-	-	-	-	-	-	-	-	-	-	-	-		

June	Sa	Su	M	Tu	W	Th	F	Sa	Su	M	Tu	W	Th	F	Sa	Su	M	Tu	W	Th	F	Sa	Su							
2019	1	2	3	4	5	6	7	8	9	10	11	12	13	14	15	16	17	18	19	20	21	22	23	24	25	26	27	28	29	30
	-	-	-	-	-	-	-	-	-	-	-	-	-	-	-	-	-	-	-	-	-	-	-	-	-	-	-	-	-	

Jul	M	Tu	W	Th	F	Sa	Su	M	Tu	W	Th	F	Sa	Su	M	Tu	W	Th	F	Sa	Su	M	Tu	W							
2019	1	2	3	4	5	6	7	8	9	10	11	12	13	14	15	16	17	18	19	20	21	22	23	24	25	26	27	28	29	30	31
	-	-	-	-	-	-	-	-	-	-	-	-	-	-	-	-	-	-	-	-	-	-	-	-	-	-	-	-	-		

Aug	Th	F	Sa	Su	M	Tu	W	Th	F	Sa	Su	M	Tu	W	Th	F	Sa	Su	M	Tu	W	Th	F	Sa							
2019	1	2	3	4	5	6	7	8	9	10	11	12	13	14	15	16	17	18	19	20	21	22	23	24	25	26	27	28	29	30	31
	-	-	-	-	-	-	-	-	-	-	-	-	-	-	-	-	-	-	-	-	-	-	-	-	-	-	-	-	-		

Sep	Su	M	Tu	W	Th	F	Sa	Su	M	Tu	W	Th	F	Sa	Su	M	Tu	W	Th	F	Sa	Su	M							
2019	1	2	3	4	5	6	7	8	9	10	11	12	13	14	15	16	17	18	19	20	21	22	23	24	25	26	27	28	29	30
	-	-	-	-	-	-	-	-	-	-	-	-	-	-	-	-	-	-	-	-	-	-	-	-	-	-	-	-	-	



Holiday lettings Most na Soči - Slovenia Country House

9

[Book now](#)

Availability calendar - from : september 2019

Oct	Tu	W	Th	F	Sa	Su	M	Tu	W	Th	F	Sa	Su	M	Tu	W	Th	F	Sa	Su	M	Tu	W	Th							
2019	1	2	3	4	5	6	7	8	9	10	11	12	13	14	15	16	17	18	19	20	21	22	23	24	25	26	27	28	29	30	31
	-	-	-	-	-	-	-	-	-	-	-	-	-	-	-	-	-	-	-	-	-	-	-	-	-	-	-	-	-	-	

Nov	F	Sa	Su	M	Tu	W	Th	F	Sa	Su	M	Tu	W	Th	F	Sa	Su	M	Tu	W	Th	F	Sa							
2019	1	2	3	4	5	6	7	8	9	10	11	12	13	14	15	16	17	18	19	20	21	22	23	24	25	26	27	28	29	30
	-	-	-	-	-	-	-	-	-	-	-	-	-	-	-	-	-	-	-	-	-	-	-	-	-	-	-	-	-	-

[Month : Next >>](#)

Rental rates - Country House - from 2 to 14 Person(s)

Rates	Night	Weekend	week	2 weeks	Month
 Low season	£62* > 3	-	£436*	-	-
 High season	£71* > 3	-	£498*	-	-

> Minimum Night

[Book now](#)

Booking conditions

• Reservation

- Payment made upon reservation : 20% of rental sum
- Payment balance : 2 weeks before the stay

• rentals

- Service charges to be added
- Day tax in addition
- Cleaning charge levy on departure : £27*
- Anticipated supplement for :
 - animals
 - supplementary bed(s)

Accepted methods of payment

- Bank transfer (wire) • Cash

[▶ Book now](#)[▶ Contact the owner](#)

Contact directly the property owners

www.ihacom.co.uk

Advert No.

72913

[>> Book now <<](#)

Contact

Spoken languages



* Converted at the rate indicated : €100 = \$116.85 = £89

Advert No. 72913

www.ihacom.co.uk[>> HOLIDAY LETTINGS](#)

BOOK DIRECT WITH THE OWNERS