

Holiday lettings

Marina di Mancaversa

"Villetta Amica"

House directly on the beach overlooking the wonderful Salento. We are at few Km from Gallipoli



Villa, semi-detached, single storey, separate entrance, in a(an) Property

Setting : waterfront, enchanting

Capacity : from 1 to 6 person(s)

Bedroom(s) : 2

Room(s) : 3

Marina di Mancaversa - Province of Lecce (LE) - Apulia
Italy

Advert No. 8271

www.ihacom.co.uk



Holiday lettings



Villa, semi-detached, single storey, separate entrance, in a(an) Property

- **Ideal for family, couples**
- **View :** panoramic, not overlooked, dominant, sea/ocean, courtyard, fantastic sunset
- **Setting :** waterfront, enchanting

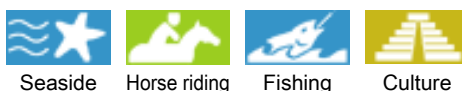
" It can accommodate 1 to 6 people. (° 1 bedroom with double bed + extra bed or cot on request – total 3 sleeps) overlooking the sea, (2° room living-bed-room with double sofa-bed, which can be used in both single and double bed + 1 sofa bed total 3 slepps) with sea views and access independent of each other. The House derives from the Division of a Villa, situated in a residential area, with two separate apartments directly on the sea, independent, fenced and bordering the maritime domain. Businesses of all kinds, bars, pizzerias, restaurants in about 150 metres. Equipped with all comforts. You can book boat trips, use of bicycles, airport transfers, sightseeing and wine routes. Possibility to request food & wine tours and cultural events. The House is equipped with satellite Tv and WI-FI Internet access."

Assets

- **Parking :**
Parking uncovered : 1 internal, off road.
- **Advantages :**
1 bike(s)
- **baby equipment :**
Baby chair, baby bath, baby potty, playpen

Benefits :
Direct access to the beach

Surroundings & location



" We are located at Marina di Mancaversa, summer resort city of Taviano (city of flowers), a few miles from the popular tourist resort of Gallipoli Salento. We are from Santa Maria di Leuca approximately 30 miles. About 35 km from Otranto. From Lido Lace Tip approximately 1 km from Gallipoli, Green Bay 4 min by car. The structure housing it borders directly with maritime domain. Distance from the sea is about 30 meters. Sandy coves less than 150 metres. The cliff is flat and make possible the access to the sea. For those wishing to attend the shores of Gallipoli Green Bay the distance is about 5 miles. At the same time staying at the residence will be determined by total relaxation, with the possibility to dine or have lunch outdoors with front sea view. The crystal clear sea is one of the main features. The territory is vast theatrical attractions, shows and entertainment. "

Leisure

- **Leisure activities less than 20 km / 12 miles :**

Pedalo, snorkelling, scuba diving, tennis, riding school, mountain bike (path), kite flying, horse trekking, fishing, angling, spear fishing

- **Supervised :**

Sailing school, dive school, riding school

- **Attractions and relaxation :**

Bar/pub, discotheque, restaurant, cinema, open air summer cinema, karaoke, park and garden, sea world, nature reserve, historical site, summer theatre

Surroundings

- **Locality :**

Sea/ocean 165'
Sandy beach 660'
Rocky beach <165'
Nudist beach 2.5mi.
Cliff <165'
Jetski slipway 0.62mi.

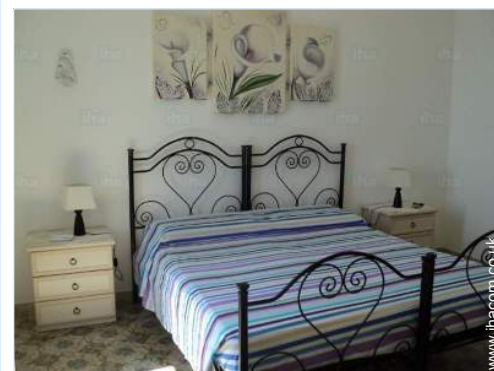
- **Amenities :**

Village centre 330'
Town centre 330'
Bus stop / bus station 330'
Bus pick up point beach
Bike/mountain bike hire <165'
Boat rental 2.5mi.
Scuba diving material hire 3mi.
Household linens for hire/laundry services <165'
Breadshop 330'
Local shops 330'
Supermarket 0.3mi.
Hairdressing salon 660'

Post office 3mi.
Bank 3mi.
Chemist 990'
Doctor 990'
Nurse <165'
Hospital 4.5mi.



view from the bedroom



master bedroom



wardrobe

Interior

- **Receive up to :**
from 1 to 6 person(s)
- **Liveable floor area :**
1,076 Sq.ft.
- **Interior layout :**
3 Room(s), 2 bedroom(s), 1 bathroom, 2 shower room, 1 WC, separate kitchen, tv room, veranda, loggia
- **Sleeps - bed(s) :**
1 double bed(s), 1 sofa bed(s) 2 pers, 1 single bed(s), 1 folding bed(s) 1 pers, 1 divan 1 pers
- **Guest facilities :**
Fireplace, T.V., DVD player, t.v points, cable/satellite, internet access, wifi, wardrobe, cupboard, safe deposit box, hair dryer, fly screens, fully air conditioned, mobile cool air fan, electric heating, Curtains, Blinds, Rolling shutters, burgular alarm
- **Appliances :**
Crockery/cuttlery, kitchen utensils, cafetiere, electric coffee maker, electric espresso coffee maker, electric kettle, toaster, gas cooker, electric cooker, oven, micro-wave oven, refridgerator, freezer, washing machine, iron, ironing board

Exterior

- **Ground surface :**
2,150 Sq.ft.
- **Outside accommodation :**
Terrace, traditional tent
- **Outside setting :**
Private courtyard 1,076 Sq.ft., enclosed grounds 1,076 Sq.ft.
- **Outside amenities :**
BBQ, garden table(s), 10 garden seat(s), parasol, 2 sun recliner(s), outside shower facilities



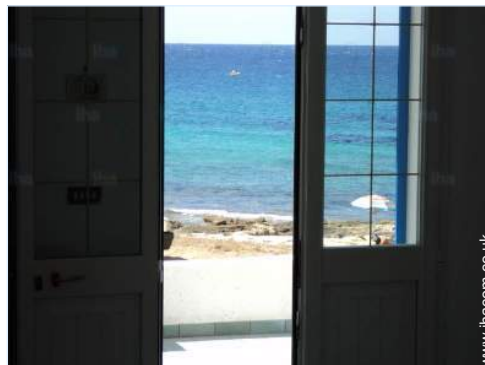
infants bedroom

Services

- **Washing :**
Sheets supplement (+£7*), Towels supplement (+£7*), Linen, Beach towels supplement (+£4*), Blanket(s), Quilt(s), Pillows
- **House :**
Cleaning, Cleaning on departure supplement (+£53*), Parking, Airport transfers supplement (+£71*)
- **Personnel :**
Staff supplement, Chef(s) supplement, Chauffeur supplement, Laundry supplement, Baby sitting supplement, Beauty treatments supplement, Massage supplement, Guide supplement
- **Restauration :**
Breakfast supplement, Half board supplement, Full board supplement, Locally produced meals supplement, Picnic basket supplement

For your guidance

- **For your guidance**
Children welcome
No pet allowed
Mobile telephone network coverage, personal transport advisable
Water : hot/cold
Local voltage supply : 220-240V / 50Hz



infants bedroom

Photo album - 1



master bedroom



view from the bedroom



wardrobe



infants bedroom



infants bedroom

Photo album - 2



furniture



Outside amenities



Outside setting



kitchen



kitchen



kitchen



kitchen

Photo album - 3



view from the veranda



View from the property



View from the property



Seaside



cliff

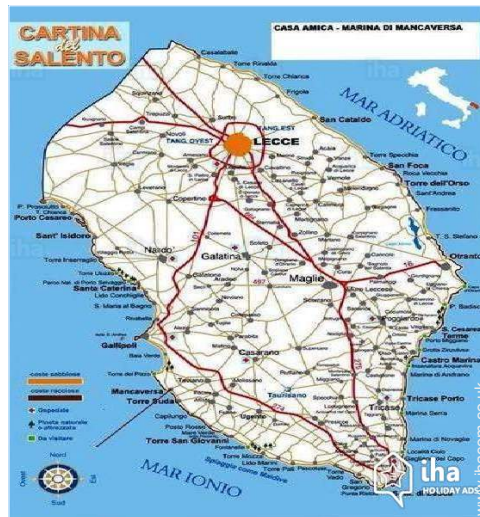


sandy beach



view from the house

Route map



Location & Access

" We are located in the beautiful region of Puglia in Salento, just minutes from Gallipoli. We directly bordering the sea. "



GPS coordinates in degrees, minutes, seconds: Latitude 39° 57'57"N - Longitude 18° 1'19"E ([Dwelling](#))

Address

→ Via Torino 12
73057 Marina di Mancaversa

• [Airport Papola Casale](#)

→ Brindisi, Province of Brindisi, Apulia, Italy
→ Distance : 50mi.
→ Time : 50'

- Gallipoli : (6mi.)
- Otranto : (28mi.)
- Marina di Leuca : (22,5mi.)

Contact

Spoken languages



Location



Holiday lettings Marina di Mancaversa - Italy "Villetta Amica"

[Book now](#)

Availability calendar - from : august 2018

Aug	W	Th	F	Sa	Su	M	Tu	W	Th	F	Sa	Su	M	Tu	W	Th	F	Sa	Su	M	Tu	W	Th	F							
2018	1	2	3	4	5	6	7	8	9	10	11	12	13	14	15	16	17	18	19	20	21	22	23	24	25	26	27	28	29	30	31

Sep	Sa	Su	M	Tu	W	Th	F	Sa	Su	M	Tu	W	Th	F	Sa	Su	M	Tu	W	Th	F	Sa	Su							
2018	1	2	3	4	5	6	7	8	9	10	11	12	13	14	15	16	17	18	19	20	21	22	23	24	25	26	27	28	29	30
	-	-	-	-	-	-	-	-	-	-	-	-	-	-	-	-	-	-	-	-	-	-	-	-	-	-	-	-	-	-

Oct	M	Tu	W	Th	F	Sa	Su	M	Tu	W	Th	F	Sa	Su	M	Tu	W	Th	F	Sa	Su	M	Tu	W	Th	F	Sa	Su	M	Tu	W
2018	1	2	3	4	5	6	7	8	9	10	11	12	13	14	15	16	17	18	19	20	21	22	23	24	25	26	27	28	29	30	31
	-	-	-	-	-	-	-	-	-	-	-	-	-	-	-	-	-	-	-	-	-	-	-	-	-	-	-	-	-	-	-

Nov	Th	F	Sa	Su	M	Tu	W	Th	F	Sa	Su	M	Tu	W	Th	F	Sa	Su	M	Tu	W	Th	F	Sa	Su	M	Tu	W	Th	F
2018	1	2	3	4	5	6	7	8	9	10	11	12	13	14	15	16	17	18	19	20	21	22	23	24	25	26	27	28	29	30
	-	-	-	-	-	-	-	-	-	-	-	-	-	-	-	-	-	-	-	-	-	-	-	-	-	-	-	-	-	-

Dec	Sa	Su	M	Tu	W	Th	F	Sa	Su	M	Tu	W	Th	F	Sa	Su	M	Tu	W	Th	F	Sa	Su	M	Tu	W	Th	F	Sa	Su	M
2018	1	2	3	4	5	6	7	8	9	10	11	12	13	14	15	16	17	18	19	20	21	22	23	24	25	26	27	28	29	30	31
	-	-	-	-	-	-	-	-	-	-	-	-	-	-	-	-	-	-	-	-	-	-	-	-	-	-	-	-	-	-	-

Jan	Tu	W	Th	F	Sa	Su	M	Tu	W	Th	F	Sa	Su	M	Tu	W	Th	F	Sa	Su	M	Tu	W	Th	F	Sa	Su	M	Tu	W	Th
2019	1	2	3	4	5	6	7	8	9	10	11	12	13	14	15	16	17	18	19	20	21	22	23	24	25	26	27	28	29	30	31
	-	-	-	-	-	-	-	-	-	-	-	-	-	-	-	-	-	-	-	-	-	-	-	-	-	-	-	-	-	-	-

Feb	F	Sa	Su	M	Tu	W	Th	F	Sa	Su	M	Tu	W	Th	F	Sa	Su	M	Tu	W	Th	F	Sa	Su	M	Tu	W	Th
2019	1	2	3	4	5	6	7	8	9	10	11	12	13	14	15	16	17	18	19	20	21	22	23	24	25	26	27	28
	-	-	-	-	-	-	-	-	-	-	-	-	-	-	-	-	-	-	-	-	-	-	-	-	-	-	-	-

Mar	F	Sa	Su	M	Tu	W	Th	F	Sa	Su	M	Tu	W	Th	F	Sa	Su	M	Tu	W	Th	F	Sa	Su	M	Tu	W	Th	F	Sa	Su
2019	1	2	3	4	5	6	7	8	9	10	11	12	13	14	15	16	17	18	19	20	21	22	23	24	25	26	27	28	29	30	31
	-	-	-	-	-	-	-	-	-	-	-	-	-	-	-	-	-	-	-	-	-	-	-	-	-	-	-	-	-	-	-

Apr	M	Tu	W	Th	F	Sa	Su	M	Tu	W	Th	F	Sa	Su	M	Tu	W	Th	F	Sa	Su	M	Tu	W	Th	F	Sa	Su	M	Tu
2019	1	2	3	4	5	6	7	8	9	10	11	12	13	14	15	16	17	18	19	20	21	22	23	24	25	26	27	28	29	30
	-	-	-	-	-	-	-	-	-	-	-	-	-	-	-	-	-	-	-	-	-	-	-	-	-	-	-	-	-	-

May	W	Th	F	Sa	Su	M	Tu	W	Th	F	Sa	Su	M	Tu	W	Th	F	Sa	Su	M	Tu	W	Th	F	Sa	Su	M	Tu	W	Th	F
2019	1	2	3	4	5	6	7	8	9	10	11	12	13	14	15	16	17	18	19	20	21	22	23	24	25	26	27	28	29	30	31
	-	-	-	-	-	-	-	-	-	-	-	-	-	-	-	-	-	-	-	-	-	-	-	-	-	-	-	-	-	-	-

Reserved



Holiday lettings
Apulia - Marina di Mancaversa
"Villetta Amica"

10
[Book now](#)

Availability calendar - from : may 2019

June	Sa	Su	M	Tu	W	Th	F	Sa	Su	M	Tu	W	Th	F	Sa	Su	M	Tu	W	Th	F	Sa	Su	M	Tu	W	Th	F	Sa	Su
2019	1	2	3	4	5	6	7	8	9	10	11	12	13	14	15	16	17	18	19	20	21	22	23	24	25	26	27	28	29	30
-	-	-	-	-	-	-	-	-	-	-	-	-	-	-	-	-	-	-	-	-	-	-	-	-	-	-	-	-	-	-

Jul	M	Tu	W	Th	F	Sa	Su	M	Tu	W	Th	F	Sa	Su	M	Tu	W	Th	F	Sa	Su	M	Tu	W	Th	F	Sa	Su	M	Tu	W
2019	1	2	3	4	5	6	7	8	9	10	11	12	13	14	15	16	17	18	19	20	21	22	23	24	25	26	27	28	29	30	31
-	-	-	-	-	-	-	-	-	-	-	-	-	-	-	-	-	-	-	-	-	-	-	-	-	-	-	-	-	-	-	-

Reserved

[Month : Next >>](#)

Rental rates - Villa - from 1 to 6 Person(s)

Rates	Night	Weekend	week	2 weeks	Month
<input type="checkbox"/> Low season	£31* > 2	£107*	£134*	£329*	£579*
> Minimum Night					

[Book now](#)

Booking conditions

• Reservation

- Payment made upon reservation : 10% of rental sum
- Payment balance : on handing over the keys
- Deposit required : £134*

• rentals

- Service charges included
- Day tax included
- Cleaning charge levy on departure : £45*
- Anticipated supplement for :
 - supplementary bed(s)
 - firewood

Accepted methods of payment

- Bank transfer (wire) • PayPal • Cash

[▶ Book now](#)

[▶ Contact the owner](#)

Contact directly the property owners

www.ihacom.co.uk

Advert No.

8271

[>> Book now <<](#)

Contact

Spoken languages



* Converted at the rate indicated : €100 = \$116.85 = £89

Advert No. 8271

www.ihacom.co.uk

