

Holiday lettings Longeville-sur-Mer "Le Grand Bleu"



Flat-Apartments 2nd floor in a(an)
Estate 3 floors

Setting : peaceful, waterfront

Capacity : from 1 to 4 person(s)

Bedroom(s) : 2

Room(s) : 2



Clé vacances (3 keys)

Longeville-sur-Mer - Vendée (85) - Pays de la Loire

France

Reservation : +33 (0) 6 12 36 96 00 (France)

Advert No. 1137

www.ihacom.co.uk



>> HOLIDAY LETTINGS

BOOK DIRECT WITH THE OWNERS

Holiday lettings



Flat-Apartments 2nd floor in a(an) Estate
3 floors

- **Ideal for family, retired people**
- **View :** panoramic, unobscured, not overlooked, sea/ocean, forest, fantastic sunset
- **Setting :** peaceful, waterfront
- **Exposure :** South-west

Assets

- **Parking :**
Parking uncovered : 1 reserved bay.
- **baby equipment :**
Baby chair, baby bath

Benefits :
Direct access to the beach



view over the sea

Surroundings & location



Seaside



Fishing

Leisure

- **Leisure activities less than 20 km / 12 miles :**

Bathing, water skiing, surfing, windsurfing, sailing, pathway, coastal/forest paths, hiking, mountain bike (path), sand yachting, kite flying, boat trips, go-karting, acrobanch, fishing, angling, pétanque pitch

- **Supervised :**

Sailing school

- **Attractions and relaxation :**

Bar/pub, discotheque, restaurant, cinema, leisure park, summer theatre, casino

Surroundings

- **Locality :**

Heated swimming pool 6mi.
Sea/ocean <165'
Sandy beach 165'
Rocky beach <165'
Surfing spots 6mi.
Cliff 4.5mi.
Lake 6mi.
Forest 330'
Marina 3mi.
Slipway 4.5mi.

- **Amenities :**

Village centre 1.85mi.
Bus stop / bus station 0.3mi.
Bus pick up point beach 1.85mi.
Bike/mountain bike hire 1.85mi.
Car rental 18.5mi.
Breadshop 165'
Caterer 1.85mi.
Local shops 165'
Supermarket 1.85mi.
Hairdressing salon 1.85mi.
Post office 1.85mi.
Bank 1.85mi.
Cash point 1.85mi.
Chemist 1.85mi.
Doctor 1.85mi.
Nurse 1.85mi.
Hospital 18.5mi.



living room



dining area



T.V.

Interior

- **Receive up to :**
from 1 to 4 person(s)
- **Liveable floor area :**
380 Sq.ft.
- **Interior layout :**
2 Room(s), 2 bedroom(s), sleeping area, 1 bathroom, 1 WC, living room 160 Sq.ft., kitchenette, dining area, loggia
- **Sleeps - bed(s) :**
1 double bed(s), 1 sofa bed(s) 2 pers, 1 bunk beds, 1 baby cot(s)
- **Guest facilities :**
T.V., home cinema, DVD player, board games, film collection, t.v points, internet access, wifi, cupboard, Hanging wardrobe, hair dryer, electric heating, Glazed in area, Curtains, Double glazed, Rolling shutters, electric shutters, fire alarm
- **Appliances :**
Crockery/cutlery, kitchen utensils, cafetiere, electric espresso coffee maker, electric kettle, toaster, juicer, electric hobs, oven, micro-wave oven, extractor hood, refridgerator, freezer, washing machine, vacuum cleaner, iron, ironing board

Exterior

- **Outside accommodation :**
Balcony 65 Sq.ft.
- **Outside amenities :**
Parasol, garden seated area



master bedroom

Services

- **Washing :**
Blanket(s), Quilt(s), Pillows

For your guidance

- **For your guidance**
Children welcome
Pets accepted
Non smoking rental, mobile telephone network coverage, personal transport advisable
Water : hot/cold
Electricity supply : mains



master bedroom

Photo album - 1



view from the flat



view over the sea



dining area



living room



T.V.



master bedroom

Photo album - 2



master bedroom



bunk beds



bathroom



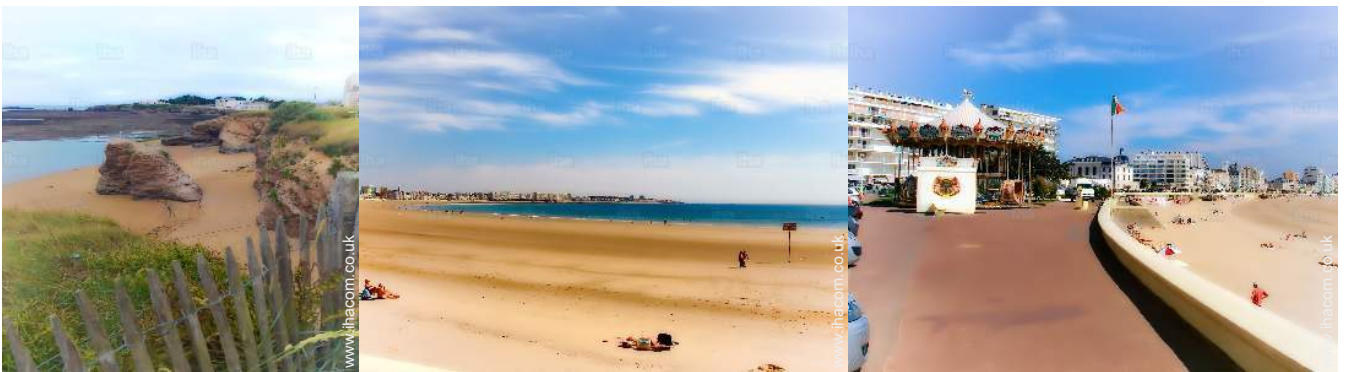
WC



view of the sunset



Photo album - 3



Route map



Location & Access



GPS coordinates in degrees, minutes, seconds: Latitude 46° 23'40"N - Longitude 1°31'9"W (Dwelling)

Address

→ LE GRAND BLEU avenue du docteur
mathevet
plage du rocher
85560 Longeville-sur-Mer

• Motorway (junction) la roche sur yon

→ La Roche-sur-Yon, Vendée, Pays de la
Loire, France
→ Distance : 20mi.
→ Time : 45'

• Train station Les Sables d'Olonne

→ Les Sables-d'Olonne, Vendée, Pays de
la Loire, France
→ Distance : 21mi.
→ Time : 50'

• Coach station sauvetour

→ Les Sables-d'Olonne, Vendée, Pays de
la Loire, France
→ Distance : 21mi.
→ Time : 1h15'

• La Tranche-sur-Mer : (7,5mi.)

• Jard-sur-Mer : (3mi.)

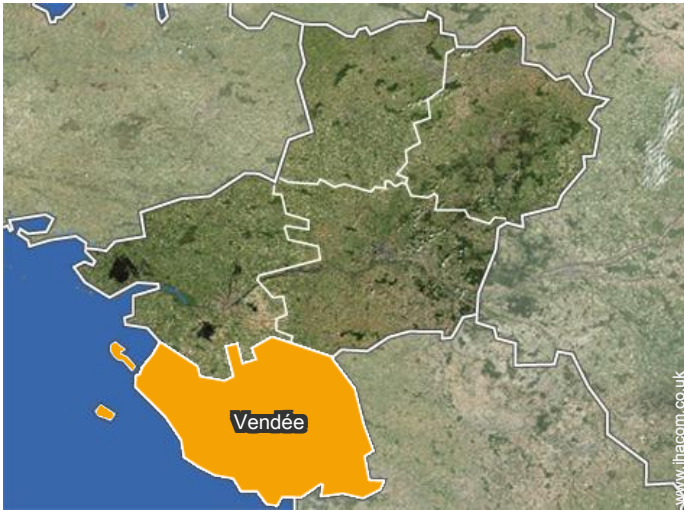
• Les Sables-d'Olonne : (21mi.)

Contact

Spoken
languages



Location



Holiday lettings Longeville-sur-Mer - France "Le Grand Bleu"

[Book now](#)

Availability calendar - from : february 2018

Feb	Th	F	Sa	Su	M	Tu	W	Th	F	Sa	Su	M	Tu	W	Th	F	Sa	Su	M	Tu	W	Th	F	Sa	Su	M	Tu	W
2018	1	2	3	4	5	6	7	8	9	10	11	12	13	14	15	16	17	18	19	20	21	22	23	24	25	26	27	28

Mar	Th	F	Sa	Su	M	Tu	W	Th	F	Sa	Su	M	Tu	W	Th	F	Sa	Su	M	Tu	W	Th	F	Sa	Su	M	Tu	W	Th	F	Sa
2018	1	2	3	4	5	6	7	8	9	10	11	12	13	14	15	16	17	18	19	20	21	22	23	24	25	26	27	28	29	30	31

Apr	Su	M	Tu	W	Th	F	Sa	Su	M	Tu	W	Th	F	Sa	Su	M	Tu	W	Th	F	Sa	Su	M	Tu	W	Th	F	Sa	Su	M
2018	1	2	3	4	5	6	7	8	9	10	11	12	13	14	15	16	17	18	19	20	21	22	23	24	25	26	27	28	29	30

May	Tu	W	Th	F	Sa	Su	M	Tu	W	Th	F	Sa	Su	M	Tu	W	Th	F	Sa	Su	M	Tu	W	Th	F	Sa	Su	M	Tu	W	Th
2018	1	2	3	4	5	6	7	8	9	10	11	12	13	14	15	16	17	18	19	20	21	22	23	24	25	26	27	28	29	30	31

June	F	Sa	Su	M	Tu	W	Th	F	Sa	Su	M	Tu	W	Th	F	Sa	Su	M	Tu	W	Th	F	Sa							
2018	1	2	3	4	5	6	7	8	9	10	11	12	13	14	15	16	17	18	19	20	21	22	23	24	25	26	27	28	29	30

Jul	Su	M	Tu	W	Th	F	Sa	Su	M	Tu	W	Th	F	Sa	Su	M	Tu	W	Th	F	Sa	Su	M	Tu	W	Th	F	Sa	Su	M	Tu
2018	1	2	3	4	5	6	7	8	9	10	11	12	13	14	15	16	17	18	19	20	21	22	23	24	25	26	27	28	29	30	31

Aug	W	Th	F	Sa	Su	M	Tu	W	Th	F	Sa	Su	M	Tu	W	Th	F	Sa	Su	M	Tu	W	Th	F	Sa	Su	M	Tu	W	Th	F
2018	1	2	3	4	5	6	7	8	9	10	11	12	13	14	15	16	17	18	19	20	21	22	23	24	25	26	27	28	29	30	31

Sep	Sa	Su	M	Tu	W	Th	F	Sa	Su	M	Tu	W	Th	F	Sa	Su	M	Tu	W	Th	F	Sa	Su							
2018	1	2	3	4	5	6	7	8	9	10	11	12	13	14	15	16	17	18	19	20	21	22	23	24	25	26	27	28	29	30

Oct	M	Tu	W	Th	F	Sa	Su	M	Tu	W	Th	F	Sa	Su	M	Tu	W	Th	F	Sa	Su	M	Tu	W							
2018	1	2	3	4	5	6	7	8	9	10	11	12	13	14	15	16	17	18	19	20	21	22	23	24	25	26	27	28	29	30	31

Nov	Th	F	Sa	Su	M	Tu	W	Th	F	Sa	Su	M	Tu	W	Th	F	Sa	Su	M	Tu	W	Th	F							
2018	1	2	3	4	5	6	7	8	9	10	11	12	13	14	15	16	17	18	19	20	21	22	23	24	25	26	27	28	29	30

Low season
 Reserved
 Mid season
 High season



Holiday lettings Pays de la Loire - Longeville-sur-Mer "Le Grand Bleu"

10
[Book now](#)

Availability calendar - from : november 2018

Dec	Sa	Su	M	Tu	W	Th	F	Sa	Su	M	Tu	W	Th	F	Sa	Su	M	Tu	W	Th	F	Sa	Su	M							
2018	1	2	3	4	5	6	7	8	9	10	11	12	13	14	15	16	17	18	19	20	21	22	23	24	25	26	27	28	29	30	31
	-	-	-	-	-	-	-	-	-	-	-	-	-	-	-	-	-	-	-	-	-	-	-	-	-	-	-	-	-	-	

Jan	Tu	W	Th	F	Sa	Su	M	Tu	W	Th	F	Sa	Su	M	Tu	W	Th	F	Sa	Su	M	Tu	W	Th							
2019	1	2	3	4	5	6	7	8	9	10	11	12	13	14	15	16	17	18	19	20	21	22	23	24	25	26	27	28	29	30	31
	-	-	-	-	-	-	-	-	-	-	-	-	-	-	-	-	-	-	-	-	-	-	-	-	-	-	-	-	-	-	

■ Low season
 ■ Reserved
 ■ Mid season
 ■ High season

[Month : Next >>](#)

Rental rates - Flat-Apartments - from 1 to 4 Person(s)

Rates	Night	Weekend	week	2 weeks	Month
■ Low season	-	£89*	£276* (Saturday)	-	-
■ Mid season	-	-	£454* (Saturday)	-	-
■ High season	-	-	£543* (Saturday)	-	-

(Check-in day)

[Book now](#)

Booking conditions

• Reservation

- Payment made upon reservation : 25% of rental sum
- Payment balance : on handing over the keys
- Deposit required : £267*

• rentals

- Service charges included
- Day tax in addition
- Cleaning charge levy on departure : £43*

[▶ Book now](#)

[▶ Contact the owner](#)

Accepted methods of payment

- Cheque
- Bankers draft
- Cash
- Holiday voucher

Contact directly the property owners

www.ihacom.co.uk

Advert No.

1137

[>> Book now <<](#)

Contact

Spoken languages



* Converted at the rate indicated : €100 = \$123.46 = £88.94

Advert No. 1137

www.ihacom.co.uk

