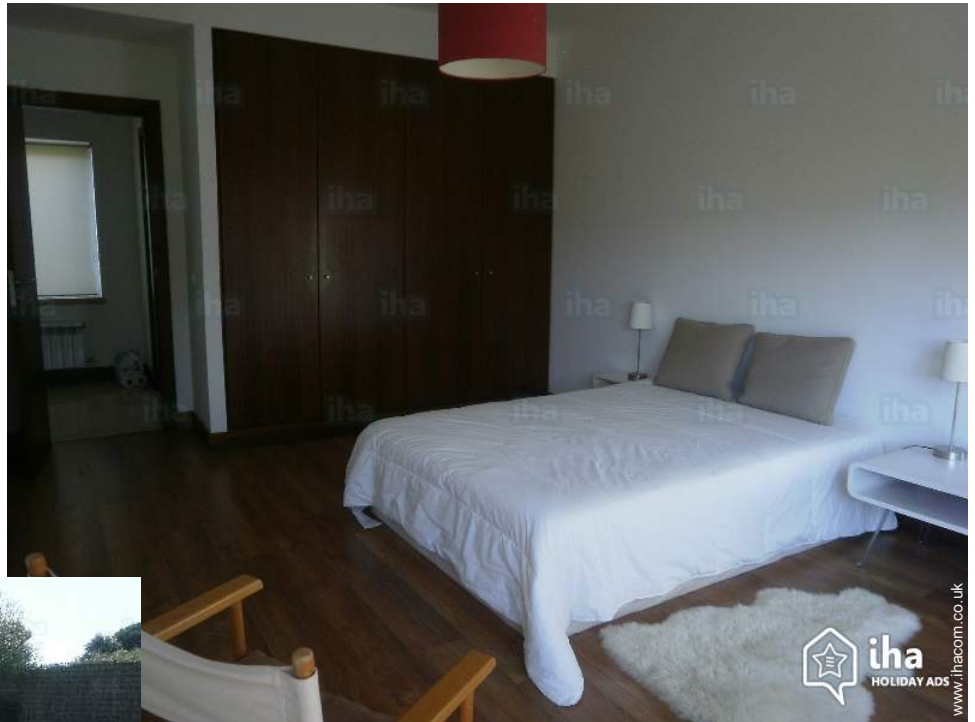


# Holiday lettings Lisbon "Campo e mar"



**Villa**, detached, single storey in a(an)  
Private property

Setting : country setting, rural

Capacity : from 2 to 6 person(s)

Bedroom(s) : 2

Room(s) : 3

Lisbon - District of Lisbon - Lisbon and Tagus Valley  
Portugal

Advert No. 32481

[www.ihacom.co.uk](http://www.ihacom.co.uk)



>> HOLIDAY LETTINGS

BOOK DIRECT WITH THE OWNERS



### Holiday lettings



Villa, detached, single storey in a(an) Private property

- **Ideal for all age groups, family**
- **View** : not overlooked, country side, courtyard
- **Setting** : country setting, rural

### Assets

- **Parking** :  
Parking uncovered

### Surroundings & location



#### Leisure

- **Leisure activities less than 20 km / 12 miles :**

Bathing, pedalo, snorkelling, scuba diving (Standard diving dress), jet ski, ten-pin bowling, basketball, big game hunting

#### Surroundings

- **Locality** :  
Sea/ocean 6mi.  
Sandy beach 1.25mi.  
Nudist beach 25mi.  
18 hole golf course 6mi.  
River 3mi.



Advert No. 32481

[www.ihacom.co.uk](http://www.ihacom.co.uk)



### Interior

- **Receive up to :**  
from 2 to 6 person(s) (6 adults)
- **Liveable floor area :**  
1,076 Sq.ft.
- **Interior layout :**  
3 Room(s), 2 bedroom(s), 1 bathroom, shower room, sitting room 430 Sq.ft., separate kitchen, veranda
- **Sleeps - bed(s) :**  
1 double bed(s), 1 sofa bed(s) 2 pers, 2 single bed(s), 2 sofa bed(s) 1 pers
- **Guest facilities :**  
Fireplace, T.V., DVD player, wardrobe, Blinds, Double glazed, entry phone system, digipad entry system
- **Appliances :**  
Crockery/cuttlery, kitchen utensils, electric coffee maker, toaster, meat grill, gas cooker, electric hobs, oven, micro-wave oven, extractor hood, refridgerator, freezer, dish washer, washing machine, vacuum cleaner, iron, ironing board

### Exterior

- **Outside setting :**  
Garden, lawn
- **Outside amenities :**  
BBQ

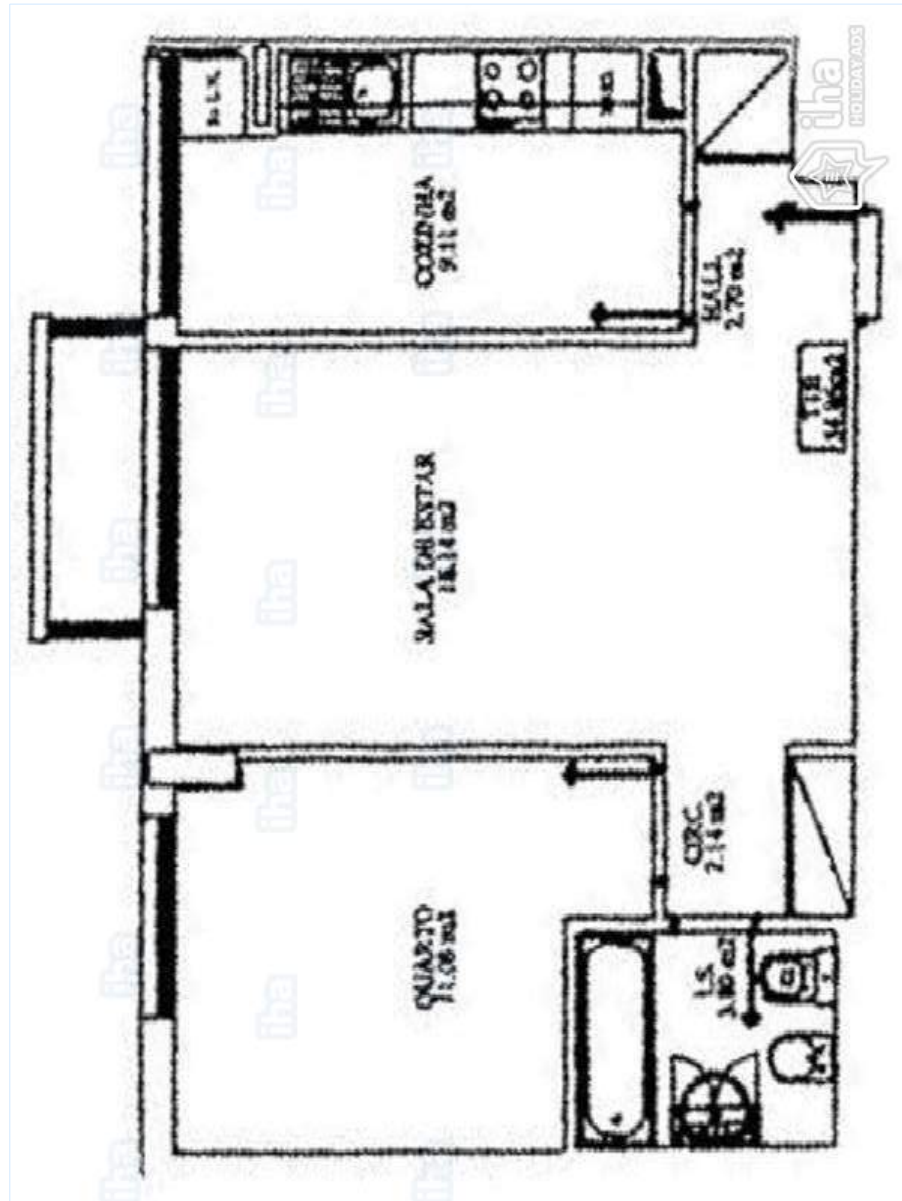
### Services

- **Washing :**  
Sheets, Towels, Blanket(s), Quilt(s), Pillows

### For your guidance

- **For your guidance**  
Children welcome  
Pets accepted under certain conditions (ask the owner)  
Water : hot/cold  
Local voltage supply : 220V / 60Hz

Floor plan



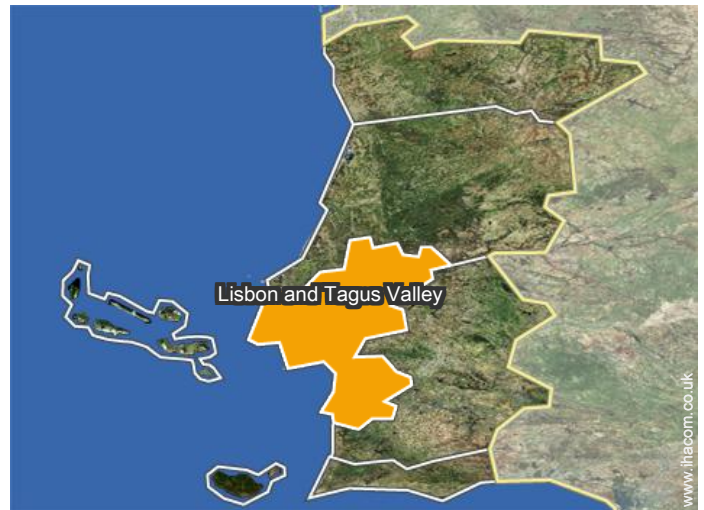
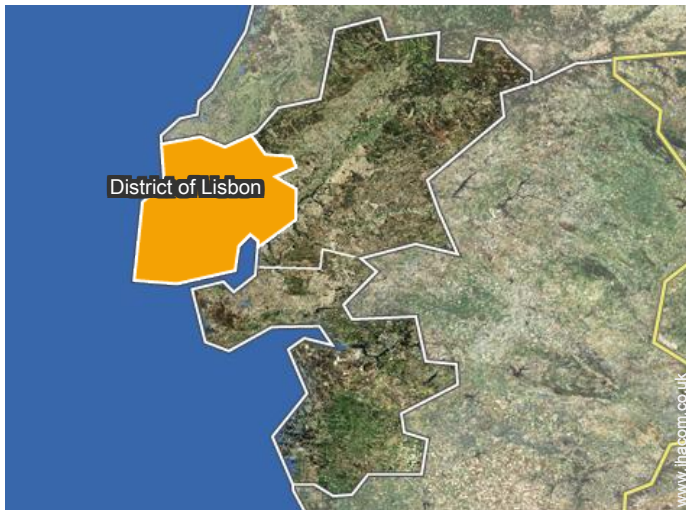
www.ihacom.co.uk



Photo album - 1



Location



Location & Access



GPS coordinates in degrees, minutes, seconds: Latitude 38°44'11"N - Longitude 9° 7'32"W ([Dwelling](#))

Address

→ Av. Marechal Francisco da Costa  
Gomes, 46-3°C  
1000 Lisbon

• [Airport Lisbon Portela](#)

→ Lisbon, District of Lisbon, Lisbon and Tagus Valley, Portugal  
→ Distance : 1.5mi.

• [Train station Lisboa Santa Apolónia](#)

→ Lisbon, District of Lisbon, Lisbon and Tagus Valley, Portugal  
→ Distance : 1.5mi.

- Lisbon : (65')
- Sesimbra : (24,3mi.)

Contact

Spoken languages



# Holiday lettings Lisbon - Portugal "Campo e mar"

7  
[Book now](#)

Availability calendar - from : may 2018

May	Tu	W	Th	F	Sa	Su	M	Tu	W	Th	F	Sa	Su	M	Tu	W	Th	F	Sa	Su	M	Tu	W	Th							
2018	1	2	3	4	5	6	7	8	9	10	11	12	13	14	15	16	17	18	19	20	21	22	23	24	25	26	27	28	29	30	31
																					-	-	-	-	-	-	-	-	-	-	-

June	F	Sa	Su	M	Tu	W	Th	F	Sa	Su	M	Tu	W	Th	F	Sa	Su	M	Tu	W	Th	F	Sa							
2018	1	2	3	4	5	6	7	8	9	10	11	12	13	14	15	16	17	18	19	20	21	22	23	24	25	26	27	28	29	30
	-	-	-	-	-	-	-	-	-	-	-	-	-	-	-	-	-	-	-	-	-	-	-	-	-	-	-	-	-	-

Jul	Su	M	Tu	W	Th	F	Sa	Su	M	Tu	W	Th	F	Sa	Su	M	Tu	W	Th	F	Sa	Su	M	Tu							
2018	1	2	3	4	5	6	7	8	9	10	11	12	13	14	15	16	17	18	19	20	21	22	23	24	25	26	27	28	29	30	31
	-	-	-	-	-	-	-	-	-	-	-	-	-	-	-	-	-	-	-	-	-	-	-	-	-	-	-	-	-	-	

Aug	W	Th	F	Sa	Su	M	Tu	W	Th	F	Sa	Su	M	Tu	W	Th	F	Sa	Su	M	Tu	W	Th	F							
2018	1	2	3	4	5	6	7	8	9	10	11	12	13	14	15	16	17	18	19	20	21	22	23	24	25	26	27	28	29	30	31
	-	-	-	-	-	-	-	-	-	-	-	-	-	-	-	-	-	-	-	-	-	-	-	-	-	-	-	-	-	-	

Sep	Sa	Su	M	Tu	W	Th	F	Sa	Su	M	Tu	W	Th	F	Sa	Su	M	Tu	W	Th	F	Sa	Su							
2018	1	2	3	4	5	6	7	8	9	10	11	12	13	14	15	16	17	18	19	20	21	22	23	24	25	26	27	28	29	30
	-	-	-	-	-	-	-	-	-	-	-	-	-	-	-	-	-	-	-	-	-	-	-	-	-	-	-	-	-	-

Oct	M	Tu	W	Th	F	Sa	Su	M	Tu	W	Th	F	Sa	Su	M	Tu	W	Th	F	Sa	Su	M	Tu	W							
2018	1	2	3	4	5	6	7	8	9	10	11	12	13	14	15	16	17	18	19	20	21	22	23	24	25	26	27	28	29	30	31
	-	-	-	-	-	-	-	-	-	-	-	-	-	-	-	-	-	-	-	-	-	-	-	-	-	-	-	-	-	-	

Nov	Th	F	Sa	Su	M	Tu	W	Th	F	Sa	Su	M	Tu	W	Th	F	Sa	Su	M	Tu	W	Th	F							
2018	1	2	3	4	5	6	7	8	9	10	11	12	13	14	15	16	17	18	19	20	21	22	23	24	25	26	27	28	29	30
	-	-	-	-	-	-	-	-	-	-	-	-	-	-	-	-	-	-	-	-	-	-	-	-	-	-	-	-	-	-

Dec	Sa	Su	M	Tu	W	Th	F	Sa	Su	M	Tu	W	Th	F	Sa	Su	M	Tu	W	Th	F	Sa	Su	M							
2018	1	2	3	4	5	6	7	8	9	10	11	12	13	14	15	16	17	18	19	20	21	22	23	24	25	26	27	28	29	30	31
	-	-	-	-	-	-	-	-	-	-	-	-	-	-	-	-	-	-	-	-	-	-	-	-	-	-	-	-	-	-	

Jan	Tu	W	Th	F	Sa	Su	M	Tu	W	Th	F	Sa	Su	M	Tu	W	Th	F	Sa	Su	M	Tu	W	Th							
2019	1	2	3	4	5	6	7	8	9	10	11	12	13	14	15	16	17	18	19	20	21	22	23	24	25	26	27	28	29	30	31
	-	-	-	-	-	-	-	-	-	-	-	-	-	-	-	-	-	-	-	-	-	-	-	-	-	-	-	-	-	-	

Feb	F	Sa	Su	M	Tu	W	Th	F	Sa	Su	M	Tu	W	Th	F	Sa	Su	M	Tu	W	Th								
2019	1	2	3	4	5	6	7	8	9	10	11	12	13	14	15	16	17	18	19	20	21	22	23	24	25	26	27	28	
	-	-	-	-	-	-	-	-	-	-	-	-	-	-	-	-	-	-	-	-	-	-	-	-	-	-	-	-	-



Holiday lettings  
District of Lisbon - Lisbon and Tagus Valley  
"Campo e mar"

8  
[Book now](#)

Availability calendar - from : february 2019

Mar	F	Sa	Su	M	Tu	W	Th	F	Sa	Su	M	Tu	W	Th	F	Sa	Su	M	Tu	W	Th	F	Sa	Su							
2019	1	2	3	4	5	6	7	8	9	10	11	12	13	14	15	16	17	18	19	20	21	22	23	24	25	26	27	28	29	30	31
	-	-	-	-	-	-	-	-	-	-	-	-	-	-	-	-	-	-	-	-	-	-	-	-	-	-	-	-	-	-	

Apr	M	Tu	W	Th	F	Sa	Su	M	Tu	W	Th	F	Sa	Su	M	Tu	W	Th	F	Sa	Su	M	Tu							
2019	1	2	3	4	5	6	7	8	9	10	11	12	13	14	15	16	17	18	19	20	21	22	23	24	25	26	27	28	29	30
	-	-	-	-	-	-	-	-	-	-	-	-	-	-	-	-	-	-	-	-	-	-	-	-	-	-	-	-	-	

[Month : Next >>](#)

Rental rates - Villa - from 2 to 6 Person(s)

Rates	Night	Weekend	week	2 weeks	Month
<span style="color:blue">■</span> Mid season	-	-	£1090* (Saturday)	-	-
<span style="color:red">■</span> High season	-	-	£1152* (Saturday)	-	-

(Check-in day)

[Book now](#)

Booking conditions

- **Reservation**  
→ Payment made upon reservation : 50% of rental sum
- **rentals**  
→ Service charges included

Accepted methods of payment

- Bank transfer (wire) • Cash

[▶ Book now](#)

[▶ Contact the owner](#)

Contact directly the property owners

[www.ihacom.co.uk](http://www.ihacom.co.uk)  
Advert No.  
32481  
[>> Book now <<](#)

Contact

Spoken languages



\* Converted at the rate indicated : €100 = \$123.46 = £88.94

Advert No. 32481

[www.ihacom.co.uk](http://www.ihacom.co.uk)

