

# Holiday lettings Windward Islands "Villa Bleucaraïbes"



Creole House, semi-detached, 1 floor, separate entrance, in a(an) Private property

Setting : exotic, heavenly

Capacity : 6 person(s)

Bedroom(s) : 3

Room(s) : 5

Les Anses-d'Arlet

Martinique

Reservation : +596 (0) 596 48 39 68 (Martinique)

Advert No. 33200

www.ihacom.co.uk



>> HOLIDAY LETTINGS

BOOK DIRECT WITH THE OWNERS

## Holiday lettings



Creole House, semi-detached, 1 floor, separate entrance, in a(an) Private property

- **Ideal for all age groups**

- **View :** panoramic, unobscured, sea/ocean, swimming pool, garden/park, fantastic sunset

- **Setting :** exotic, heavenly

- **Exposure :** South

## Assets

- **Swimming pool :**

Private swimming-pool, rectangular (length 40', width 16'), sea water, illuminated, steps in, step ladder, child secure, outside shower (open from '01 january' till '31 december')

- **Parking :**

Parking uncovered : 2 off road.

- **baby equipment :**

Baby chair, baby bath, baby potty, pushchair

## Surroundings & location



Seaside



Horse riding



Fishing

### Leisure

- **Leisure activities less than 20 km / 12 miles :**

Bathing, snorkelling, scuba diving, jet ski, golf, riding school, hiking, hang-gliding, paragliding, boat trips, horse trekking, ATV/ Quad Bike, deep-sea angling

- **Supervised :**

Sailing school

- **Attractions and relaxation :**

Bar/pub, discotheque, restaurant, cinema, museum

### Surroundings

- **Locality :**

Sea/ocean 330'  
Sandy beach 330'  
18 hole golf course 6mi.  
Watersports centre 2.5mi.

- **Amenities :**

Village centre  
Scooter/motorbike hire 3mi.  
Car rental  
Boat rental 4.5mi.  
Scuba diving material hire 990'  
Breadshop 330'  
Local shops 330'  
Supermarket 3mi.  
Internet cafe 990'  
Post office 3mi.  
Bank 2.5mi.  
Cash point 2.5mi.  
Chemist 3mi.  
Doctor 3mi.  
Nurse 0.5mi.  
Hospital 18.5mi.



view from the swimming pool



tv room



view from the covered terrace



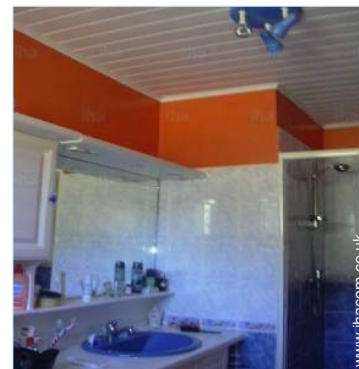
tv room

### Interior

- **Receive up to :**  
6 person(s) (6 adults)
- **Liveable floor area :**  
1,940 Sq.ft.
- **Interior layout :**  
5 Room(s), 3 bedroom(s), 2 shower room, 3 WC, living room 430 Sq.ft., separate kitchen, dining room, dining area, mezzanine, tv room, laundry room, pantry, veranda
- **Sleeps - bed(s) :**  
1 super king-size bed(s), 1 four poster bed (s), 4 single bed(s), 1 baby cot(s)
- **Guest facilities :**  
T.V., hi-fi system, videoplayer, DVD player, board games, book collection, film collection, t.v points, fax, computer, cable/satellite, internet access, high speed internet access, wifi, cupboard, hair dryer, mosquito nets, fly screens, fully air conditioned, mobile cool air fan, Glazed in area, Skylights, Curtains, Double glazed, electric shutters, entry phone system
- **Appliances :**  
Crockery/cutlery, kitchen utensils, cafetiere, electric coffee maker, electric kettle, toaster, juicer, food processor, crepe maker, electric raclette set, gas cooker, oven, micro-wave oven, electric chip fryer, extractor hood, refrigerator, freezer, ice maker, dish washer, washing machine, vacuum cleaner, iron, ironing board

### Exterior

- **Ground surface :**  
0.5 acre
- **Outside accommodation :**  
Covered terrace 860 Sq.ft.
- **Outside setting :**  
Enclosed grounds 0.5 acre, tropical garden > 0.25 acre
- **Outside amenities :**  
Summer living area, BBQ, garden table(s), 8 garden seat(s), trolley on wheels, garden seated area, 8 chaise(s) longue(s), 1 hammock(s), outside shower facilities



Interior layout

### Services

- **Washing :**  
Sheets, Towels, Linen, Beach towels supplement (+£4\*), Blanket(s), Pillows
- **House :**  
Cleaning supplement, Cleaning on departure supplement (+£71\*), Garden/swimming pool maintenance (7 X / per week), Parking
- **Restauration :**  
Breakfast, Locally produced meals (1 X / per week)

### For your guidance

- **For your guidance**  
Children welcome  
Present on site : pets  
Mobile telephone network coverage, personal transport advisable  
Water : hot/cold  
Local voltage supply : 220-240V / 50Hz  
Electricity supply : mains



master bedroom



Photo album - 1



view from the swimming pool



view from the covered terrace



tv room



tv room



master bedroom



Photo album - 2



Interior layout

separate kitchen

large bedroom



view over the sea

view from the covered terrace

view from the covered terrace



infants bedroom

interior

Seaside



Outside setting

Outside setting

view from the veranda

Holiday lettings  
Les Anses-d'Arlet - Windward Islands  
"Villa Bleucaraïbes"

6

[Book now](#)

Location



Location & Access



GPS coordinates in degrees, minutes, seconds: Latitude 14° 28'9"N - Longitude 61°4'7"W (Dwelling)

Address

→ allée des pommes cannelle  
97217 Les Anses-d'Arlet

• [Airport Martinique Aimé Césaire](#)

→ Fort-de-France, Martinique  
→ Distance : 20mi.  
→ Time : 45'

- Le Diamant : (3mi.)
- Les Trois-Ilets : (4.5mi.)

Contact

Spoken languages



# Holiday lettings Windward Islands - Martinique "Villa Bleucaraïbes"

7  
[Book now](#)

## Availability calendar - from : september 2018

Sep	Sa	Su	M	Tu	W	Th	F	Sa	Su	M	Tu	W	Th	F	Sa	Su	M	Tu	W	Th	F	Sa	Su	M	Tu	W	Th	F	Sa	Su
2018	1	2	3	4	5	6	7	8	9	10	11	12	13	14	15	16	17	18	19	20	21	22	23	24	25	26	27	28	29	30
																							-	-	-	-	-	-	-	-

Oct	M	Tu	W	Th	F	Sa	Su	M	Tu	W	Th	F	Sa	Su	M	Tu	W	Th	F	Sa	Su	M	Tu	W	Th	F	Sa	Su	M	Tu	W
2018	1	2	3	4	5	6	7	8	9	10	11	12	13	14	15	16	17	18	19	20	21	22	23	24	25	26	27	28	29	30	31
	-	-	-	-	-	-	-	-	-	-	-	-	-	-	-	-	-	-	-	-	-	-	-	-	-	-	-	-	-	-	-

Nov	Th	F	Sa	Su	M	Tu	W	Th	F	Sa	Su	M	Tu	W	Th	F	Sa	Su	M	Tu	W	Th	F	Sa	Su	M	Tu	W	Th	F
2018	1	2	3	4	5	6	7	8	9	10	11	12	13	14	15	16	17	18	19	20	21	22	23	24	25	26	27	28	29	30
	-	-	-	-	-	-	-	-	-	-	-	-	-	-	-	-	-	-	-	-	-	-	-	-	-	-	-	-	-	-

Dec	Sa	Su	M	Tu	W	Th	F	Sa	Su	M	Tu	W	Th	F	Sa	Su	M	Tu	W	Th	F	Sa	Su	M	Tu	W	Th	F	Sa	Su	M
2018	1	2	3	4	5	6	7	8	9	10	11	12	13	14	15	16	17	18	19	20	21	22	23	24	25	26	27	28	29	30	31
	-	-	-	-	-	-	-	-	-	-	-	-	-	-	-	-	-	-	-	-	-	-	-	-	-	-	-	-	-	-	-

Jan	Tu	W	Th	F	Sa	Su	M	Tu	W	Th	F	Sa	Su	M	Tu	W	Th	F	Sa	Su	M	Tu	W	Th	F	Sa	Su	M	Tu	W	Th
2019	1	2	3	4	5	6	7	8	9	10	11	12	13	14	15	16	17	18	19	20	21	22	23	24	25	26	27	28	29	30	31
	-	-	-	-	-	-	-	-	-	-	-	-	-	-	-	-	-	-	-	-	-	-	-	-	-	-	-	-	-	-	-

Feb	F	Sa	Su	M	Tu	W	Th	F	Sa	Su	M	Tu	W	Th	F	Sa	Su	M	Tu	W	Th							
2019	1	2	3	4	5	6	7	8	9	10	11	12	13	14	15	16	17	18	19	20	21	22	23	24	25	26	27	28
	-	-	-	-	-	-	-	-	-	-	-	-	-	-	-	-	-	-	-	-	-	-	-	-	-	-	-	-

Mar	F	Sa	Su	M	Tu	W	Th	F	Sa	Su	M	Tu	W	Th	F	Sa	Su	M	Tu	W	Th	F	Sa	Su							
2019	1	2	3	4	5	6	7	8	9	10	11	12	13	14	15	16	17	18	19	20	21	22	23	24	25	26	27	28	29	30	31
	-	-	-	-	-	-	-	-	-	-	-	-	-	-	-	-	-	-	-	-	-	-	-	-	-	-	-	-	-	-	

Apr	M	Tu	W	Th	F	Sa	Su	M	Tu	W	Th	F	Sa	Su	M	Tu	W	Th	F	Sa	Su	M	Tu	W	Th	F	Sa	Su	M	Tu
2019	1	2	3	4	5	6	7	8	9	10	11	12	13	14	15	16	17	18	19	20	21	22	23	24	25	26	27	28	29	30
	-	-	-	-	-	-	-	-	-	-	-	-	-	-	-	-	-	-	-	-	-	-	-	-	-	-	-	-	-	-

May	W	Th	F	Sa	Su	M	Tu	W	Th	F	Sa	Su	M	Tu	W	Th	F	Sa	Su	M	Tu	W	Th	F	Sa	Su	M	Tu	W	Th	F
2019	1	2	3	4	5	6	7	8	9	10	11	12	13	14	15	16	17	18	19	20	21	22	23	24	25	26	27	28	29	30	31
	-	-	-	-	-	-	-	-	-	-	-	-	-	-	-	-	-	-	-	-	-	-	-	-	-	-	-	-	-	-	-

June	Sa	Su	M	Tu	W	Th	F	Sa	Su	M	Tu	W	Th	F	Sa	Su	M	Tu	W	Th	F	Sa	Su							
2019	1	2	3	4	5	6	7	8	9	10	11	12	13	14	15	16	17	18	19	20	21	22	23	24	25	26	27	28	29	30
	-	-	-	-	-	-	-	-	-	-	-	-	-	-	-	-	-	-	-	-	-	-	-	-	-	-	-	-	-	-

 Reserved



# Holiday lettings Les Anses-d'Arlet - Martinique "Villa Bleucaraïbes"

8  
[Book now](#)

## Availability calendar - from : june 2019


Jul	M	Tu	W	Th	F	Sa	Su	M	Tu	W	Th	F	Sa	Su	M	Tu	W	Th	F	Sa	Su	M	Tu	W							
2019	1	2	3	4	5	6	7	8	9	10	11	12	13	14	15	16	17	18	19	20	21	22	23	24	25	26	27	28	29	30	31
-	-	-	-	-	-	-	-	-	-	-	-	-	-	-	-	-	-	-	-	-	-	-	-	-	-	-	-	-	-	-	

Aug	Th	F	Sa	Su	M	Tu	W	Th	F	Sa	Su	M	Tu	W	Th	F	Sa	Su	M	Tu	W	Th	F	Sa							
2019	1	2	3	4	5	6	7	8	9	10	11	12	13	14	15	16	17	18	19	20	21	22	23	24	25	26	27	28	29	30	31
-	-	-	-	-	-	-	-	-	-	-	-	-	-	-	-	-	-	-	-	-	-	-	-	-	-	-	-	-	-	-	

 Reserved

[Month : Next >>](#)

## Rental rates - Creole House - 6 Person(s)

Rates	Night	Weekend	week	2 weeks	Month
 Low season	-	-	£1068*	-	-
 High season	-	-	£1335*	-	-
 Festive specials	-	-	-	£3204*	-

[Book now](#)

### Booking conditions

#### • Reservation

- Payment made upon reservation : 30% of rental sum
- Payment balance : on handing over the keys
- Deposit required : £890\*

#### • rentals

- Service charges included
- Day tax included
- Cleaning charge levy on departure : £71\*

[▶ Book now](#)

[▶ Contact the owner](#)

### Accepted methods of payment

- Bank transfer (wire) • Cheque • Cash

Contact directly the property owners

[www.ihacom.co.uk](http://www.ihacom.co.uk)

Advert No.

33200

[>> Book now <<](#)

### Contact

Spoken languages



\* Converted at the rate indicated : €100 = \$116.85 = £89

Advert No. 33200

[www.ihacom.co.uk](http://www.ihacom.co.uk)



[>> HOLIDAY LETTINGS](#)

[BOOK DIRECT WITH THE OWNERS](#)