

# Holiday lettings La Digue "LAKAZ AN BWA"

SUPER MAISON CREOLE all in local wood with PANORAMIC VUE ON THE MER AND THE ILES, located in the middle of a tropical garden overlooking the beach, in a very quiet natural environment.



Wooden House, detached, single storey, separate entrance, in a(an) Charming Property

Setting : tropical, natural

Capacity : from 1 to 8 person(s)

Bedroom(s) : 4

Room(s) : 9

La Digue - La Digue Island - Inner Islands

Seychelles

Advert No. 30463

Reservation : +248 (0) 4234326 (Seychelles)

www.ihacom.co.uk



## Holiday lettings



Wooden House, detached, single storey, separate entrance, in a(an) Charming Property

- **Ideal for all age groups, family groups**

- **View :** panoramic, unobscured, not overlooked, dominant, sea/ocean, garden/park

- **Setting :** tropical, natural

" This charming rental of great comfort and decorated with a lot of taste, very comfortably accommodates 4 ADULTES and 4 ENFANTS. It has a spacious living room fully opening onto a very large terrace OVERLOOKING THE PLAGES with SPLENDIDE VUE ON MER at 180 degrees - a very well equipped American kitchen (washing machine, dishwasher, microwave) - two large master bedrooms Completely independent opening onto the terrace, with private bathrooms and toilets, and a small adjoining separate room to house each 2 children in bunk beds. The house has fans in every room, safe in each room, unlimited INTERNET-WIFI, outdoor shower and barbecue. Home linen provided - Baby bed on request - Household included, as well as transfers arrival/departure from the port for hire. The beach is 3 minutes from the house and the village is 3km away. In La DIGUE the means of transport is the bicycle or the taxi: the possibility of renting bicycles on request. The owners, French who have lived in Seychelles for 20 years, or their team, will be happy to share their love for these wonderful islands where it is so good to live... "

## Assets

- **baby equipment :**

Baby chair

**Benefits :**  
Direct access to the beach

## Surroundings & location



Seaside



Fishing

" This beautiful island has modest proportions (5 km long by 3 km wide), but it has all the beauties of the Seychelles archipelago: beaches lined with granite rocks, hills covered with coconut trees, lataniers and takamakas, small Roads... The DIGUE has retained its authenticity, so take the opportunity to discover it on a peaceful rhythm... It's very easy to rent a bike, and the oxcarts are waiting for you to take you for an authentic ride. "

### Leisure

- **Leisure activities less than 20 km / 12 miles :**

Bathing, snorkelling, scuba diving, mountain bike (path), boat trips, fishing, deep-sea angling, angling

- **Supervised :**

Dive school

- **Attractions and relaxation :**

Restaurant, park and garden, art gallery, museum, casino, beauticians

### Surroundings

- **Locality :**

Sea/ocean <165'  
Sandy beach <165'

- **Amenities :**

Village centre 1.85mi.  
Bike/mountain bike hire  
Boat rental 1.85mi.  
Scuba diving material hire 1.85mi.  
Breadshop 1.85mi.  
Local shops 0.5mi.  
Supermarket 1.85mi.  
Post office 1.85mi.  
Bank 1.85mi.  
Cash point 1.85mi.  
Chemist 1.85mi.  
Dispensing clinic 1.85mi.



view from the garden/park



View from the property



### Exterior

- **Ground surface :**  
0.37 acre
- **Outside accommodation :**  
Covered terrace 323 Sq.ft.
- **Outside setting :**  
Tropical garden
- **Outside amenities :**  
BBQ, 4 chaise(s) longue(s), outside shower facilities



view from the kitchen

### Interior

- **Receive up to :**  
from 1 to 8 person(s) (4 adults, 4 children)
- **Liveable floor area :**  
1,300 Sq.ft.
- **Interior layout :**  
9 Room(s), 4 bedroom(s), 2 shower room, 2 WC, living room, sitting room, american style kitchen, dining room, veranda
- **Sleeps - bed(s) :**  
2 king-size bed(s), 4 bunk beds
- **Guest facilities :**  
Board games, telephone, high speed internet access, wifi, wardrobe, Hanging wardrobe, safe deposit box, hair dryer, mosquito nets, mobile cool air fan, ceiling paddle fan, Curtains, Blinds, fire alarm
- **Appliances :**  
Crockery/cutlery, kitchen utensils, cafetiere, electric coffee maker, electric espresso coffee maker, electric kettle, toaster, juicer, food processor, gas cooker, electric hobs, oven, micro-wave oven, refridgerator, freezer, dish washer, washing machine, vacuum cleaner, iron, ironing board

### Services

- **Washing :**  
Sheets (2 X / per week), Towels (2 X / per week), Linen (2 X / per week), Pillows
- **House :**  
Cleaning (2 X / per week), Cleaning on departure
- **Restauration :**  
Locally produced meals supplement

### For your guidance

- **For your guidance**  
Children welcome  
No pet allowed  
Mobile telephone network coverage



view from the sitting-room

Photo album - 1



View from the property



view from the garden/park



view from the sitting-room



view from the kitchen

Photo album - 2



kitchen

large bedroom



shower room

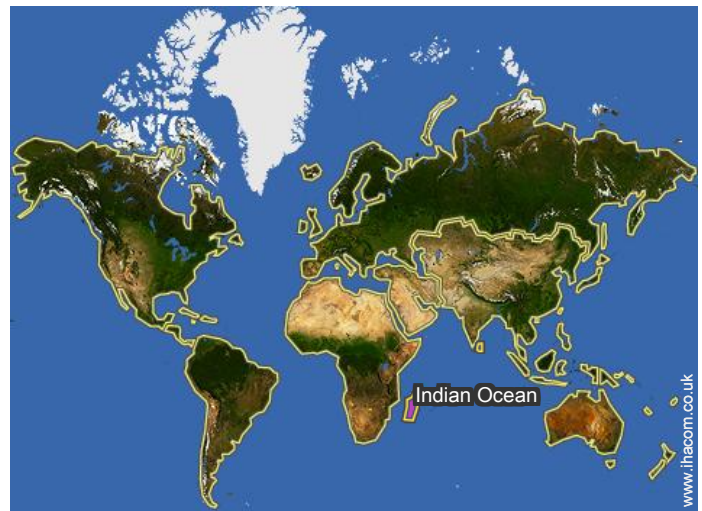
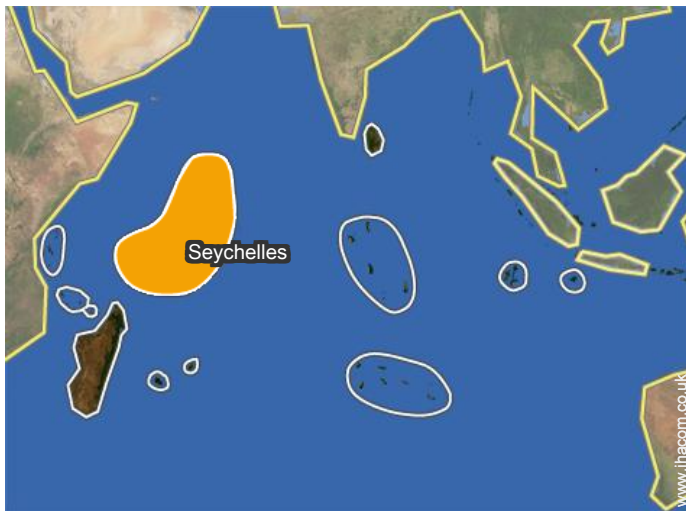
view from the covered terrace



view from the covered terrace


Leisure

### Location



### Location & Access

" To come to La Digue, 3 possibilities: Rapid transfer by ferry between the islands of Mahé / Praslin and La Digue. Air Seychelles Domestic air transfer. ZILAIR helicopter transfer "

 GPS coordinates in degrees, minutes, seconds: Latitude 4°20'35"S - Longitude 55° 50'25"E (Dwelling)

#### Address

→ Anse Gaulette

• Victoria : (25mi.)

#### • Airport Seychelles

→ Victoria, Mahé Island, Inner Islands, Seychelles

→ Distance : 31mi.

→ Time : 15'

#### • Sea port Victoria

→ Victoria, Mahé Island, Inner Islands, Seychelles

→ Distance : 31mi.

→ Time : 1h30'

• La Digue : (1.85mi.)

• Baie Sainte Anne : (4.5mi.)

### Contact

Spoken languages



# Holiday lettings La Digue - Seychelles "LAKAZ AN BWA"

7  
[Book now](#)

## Availability calendar - from : november 2019

Nov	F	Sa	Su	M	Tu	W	Th	F	Sa	Su	M	Tu	W	Th	F	Sa	Su	M	Tu	W	Th	F	Sa							
2019	1	2	3	4	5	6	7	8	9	10	11	12	13	14	15	16	17	18	19	20	21	22	23	24	25	26	27	28	29	30

Dec	Su	M	Tu	W	Th	F	Sa	Su	M	Tu	W	Th	F	Sa	Su	M	Tu	W	Th	F	Sa	Su	M	Tu							
2019	1	2	3	4	5	6	7	8	9	10	11	12	13	14	15	16	17	18	19	20	21	22	23	24	25	26	27	28	29	30	31

Jan	W	Th	F	Sa	Su	M	Tu	W	Th	F	Sa	Su	M	Tu	W	Th	F	Sa	Su	M	Tu	W	Th	F							
2020	1	2	3	4	5	6	7	8	9	10	11	12	13	14	15	16	17	18	19	20	21	22	23	24	25	26	27	28	29	30	31

Feb	Sa	Su	M	Tu	W	Th	F	Sa	Su	M	Tu	W	Th	F	Sa	Su	M	Tu	W	Th	F	Sa								
2020	1	2	3	4	5	6	7	8	9	10	11	12	13	14	15	16	17	18	19	20	21	22	23	24	25	26	27	28	29	

Mar	Su	M	Tu	W	Th	F	Sa	Su	M	Tu	W	Th	F	Sa	Su	M	Tu	W	Th	F	Sa	Su	M	Tu							
2020	1	2	3	4	5	6	7	8	9	10	11	12	13	14	15	16	17	18	19	20	21	22	23	24	25	26	27	28	29	30	31

Apr	W	Th	F	Sa	Su	M	Tu	W	Th	F	Sa	Su	M	Tu	W	Th	F	Sa	Su	M	Tu	W	Th								
2020	1	2	3	4	5	6	7	8	9	10	11	12	13	14	15	16	17	18	19	20	21	22	23	24	25	26	27	28	29	30	

May	F	Sa	Su	M	Tu	W	Th	F	Sa	Su	M	Tu	W	Th	F	Sa	Su	M	Tu	W	Th	F	Sa	Su							
2020	1	2	3	4	5	6	7	8	9	10	11	12	13	14	15	16	17	18	19	20	21	22	23	24	25	26	27	28	29	30	31

June	M	Tu	W	Th	F	Sa	Su	M	Tu	W	Th	F	Sa	Su	M	Tu	W	Th	F	Sa	Su	M	Tu								
2020	1	2	3	4	5	6	7	8	9	10	11	12	13	14	15	16	17	18	19	20	21	22	23	24	25	26	27	28	29	30	

Jul	W	Th	F	Sa	Su	M	Tu	W	Th	F	Sa	Su	M	Tu	W	Th	F	Sa	Su	M	Tu	W	Th	F							
2020	1	2	3	4	5	6	7	8	9	10	11	12	13	14	15	16	17	18	19	20	21	22	23	24	25	26	27	28	29	30	31

Aug	Sa	Su	M	Tu	W	Th	F	Sa	Su	M	Tu	W	Th	F	Sa	Su	M	Tu	W	Th	F	Sa	Su	M							
2020	1	2	3	4	5	6	7	8	9	10	11	12	13	14	15	16	17	18	19	20	21	22	23	24	25	26	27	28	29	30	31

 Reserved

Holiday lettings  
La Digue Island - Inner Islands  
"LAKAZ AN BWA"

8  
[Book now](#)

Availability calendar - from : august 2020


Sep	Tu	W	Th	F	Sa	Su	M	Tu	W	Th	F	Sa	Su	M	Tu	W	Th	F	Sa	Su	M	Tu	W							
2020	1	2	3	4	5	6	7	8	9	10	11	12	13	14	15	16	17	18	19	20	21	22	23	24	25	26	27	28	29	30
-	-	-	-	-	-	-	-	-	-	-	-	-	-	-	-	-	-	-	-	-	-	-	-	-	-	-	-	-	-	

Oct	Th	F	Sa	Su	M	Tu	W	Th	F	Sa	Su	M	Tu	W	Th	F	Sa	Su	M	Tu	W	Th	F	Sa							
2020	1	2	3	4	5	6	7	8	9	10	11	12	13	14	15	16	17	18	19	20	21	22	23	24	25	26	27	28	29	30	31
-	-	-	-	-	-	-	-	-	-	-	-	-	-	-	-	-	-	-	-	-	-	-	-	-	-	-	-	-	-	-	

Reserved

[Month : Next >>](#)

Rental rates - Wooden House - from 1 to 8 Person(s)

Rates	Night	Weekend	week	2 weeks	Month
 High season	£319* > 4	-	-	-	-
> Minimum Night					

[Book now](#)

Booking conditions

• Reservation

- Payment made upon reservation : 50% of rental sum
- Payment balance : 1 month before the stay
- Deposit required : £455\*

• rentals

- Service charges included
- Day tax included
- Cleaning charge on departure included

[▶ Book now](#)

[▶ Contact the owner](#)

Accepted methods of payment

- Bank transfer (wire) • Cash

Contact directly the property owners

[www.ihacom.co.uk](http://www.ihacom.co.uk)  
Advert No.  
30463  
[>> Book now <<](#)

Contact

Spoken languages



\* Converted at the rate indicated : €100 = \$110 = £91

Advert No. 30463

[www.ihacom.co.uk](http://www.ihacom.co.uk)



[>> HOLIDAY LETTINGS](#)

[BOOK DIRECT WITH THE OWNERS](#)