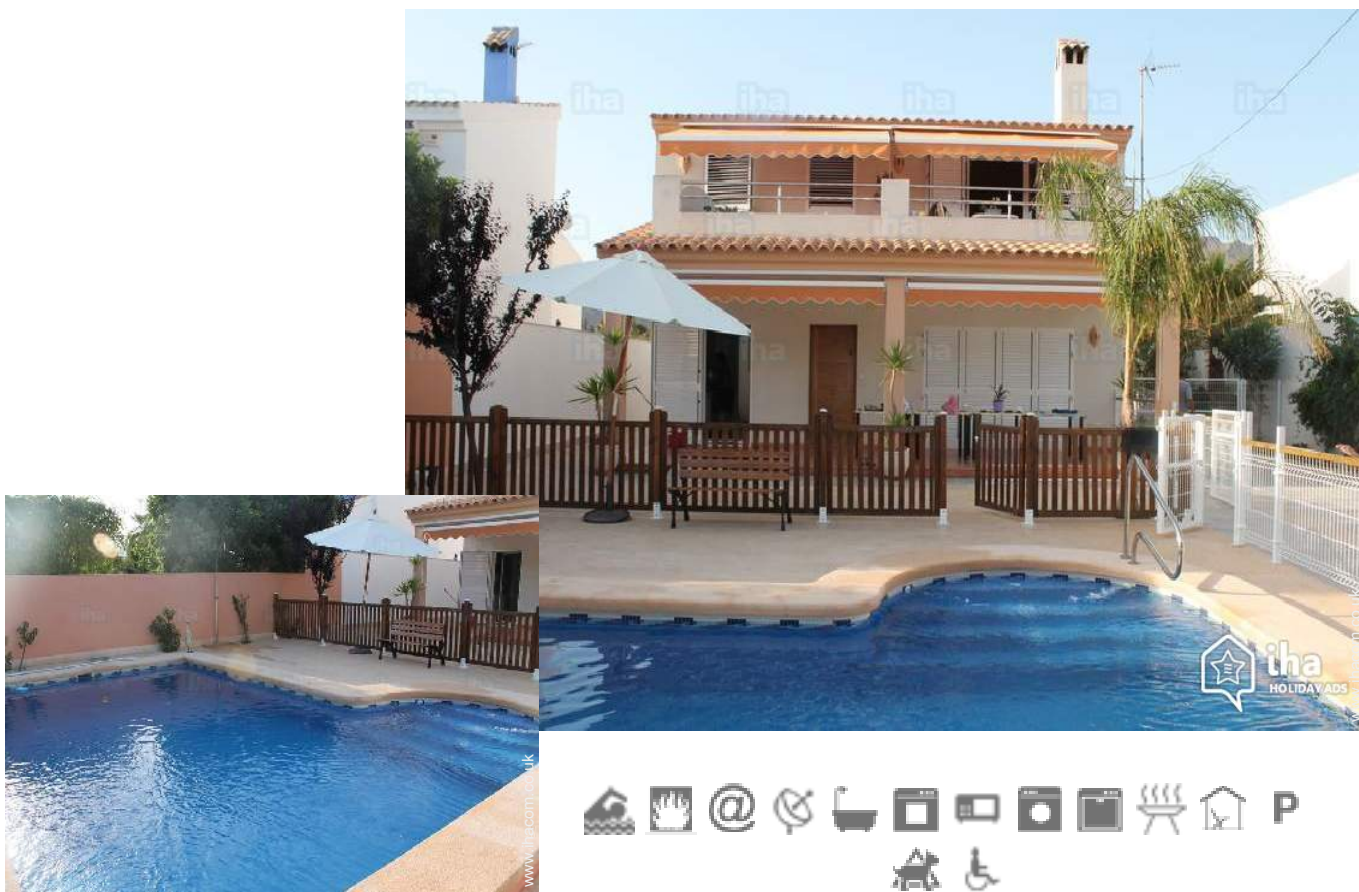


Holiday lettings Costa Cálida "Chalet"

House with garden areas and very sunny. Fresh in summer. The swimming pool is fenced excellent valuation of all customers who have passed.



Villa, detached, 2 floors, separate entrance, in a(an) Housing estate

Setting : quiet, enchanting

Capacity : from 1 to 12 person(s)

Bedroom(s) : 6

Room(s) : 8

La Azohia - Murcia

Spain

Advert No. 1459

www.ihacom.co.uk



Holiday lettings



Villa, detached, 2 floors, separate entrance, in a(an) Housing estate

- **Ideal for family, large families**
- **View :** panoramic, mountain, country side, swimming pool, garden/park, fantastic sunset
- **Setting :** quiet, enchanting
- **Exposure :** South-east

" It is possible that the calendar appears reserved and is one of the plants, so convenient check. Two storey villa complete with independent access, both to the first floor by outside staircase and poolside, and 120 m each, on a plot of 605 m each plant consists of 3 rooms. One of them double. The other with 1 bed of 90 and another of 1'05, 2 bathrooms, 1 living room of 25'90 m with fireplace, kitchen, fitted wardrobes. The plant first terrace of 14'80 m. The ground floor porch of 31 m. Each floor has a private and limited outdoor space. Dependiendo_de times, there are 3 options to rent: 1) full House. (2) independent plants c) a plant choice, keeping the other closed. From May to October (pool) is primarily rented the whole House. The exposed prices are for the whole House. For stays, months, years and special dates; CONSULT. "

Assets

- **Swimming pool :**
Private swimming-pool, rectangular, illuminated, steps in, outside shower (open from '01 may' till '30 october')
- **Parking :**
Parking uncovered : 4 off road.

Benefits :
Direct access to the beach

Surroundings & location



Seaside



Fishing

" The area is quiet, close to the beach, with swimming pool. The beaches are great quality sand. It is a privileged location considered special area for divers, lovers of the walk. The beaches and walks are ideal. It is one of the most important areas of the Iberian Peninsula by its representativeness, uniqueness and high marine biodiversity. It is considered a priority conservation zone for ANSE, Greenpeace and WWF because of the variety and complexity of the present biocenosis, as well as by its representativeness, high species richness, biodiversity and good state of conservation. The environment in this area is unique. Orientation and distribution of the House allows a permanent ventilation. Natural paving around the House and pool, which heats up little and not sliding. "

Leisure

- **Leisure activities less than 20 km / 12 miles :**

Snowboarding, bathing, pedalo, snorkelling, scuba diving, scuba diving (Standard diving dress), banana boat, water skiing, surfing, sailing, canoeing, tennis, squash, pathway, coastal/forest paths, boat trips, mini-golf, fishing, angling, spear fishing

- **Supervised :**

Dive school

- **Attractions and relaxation :**

Bar/pub, restaurant, cinema, open air summer cinema, leisure park, nature reserve, exhibition centre, art gallery, historical site, museum, theatre, festivals, antiques & bric-a-brac, local craftshop, casino, racecourse, natural spring baths, beauticians, fitness centre

Surroundings

- **Locality :**

Sea/ocean 990'
Sandy beach 0.3mi.
Shingle beach 990'
Rocky beach 990'
Nudist beach 4.5mi.
Creek 0.5mi.
Public swimming pool
River rapids
Cliff 0.5mi.
Mountain range 990'
Marina 3mi.
Slipway

- **Amenities :**

Village centre 0.62mi.
Bus stop / bus station 660'
Scuba diving material hire 0.5mi.
Breadshop 990'

Local shops 990'
Supermarket
High class retailers 3mi.
Hairdressing salon 0.62mi.
Post office 3mi.
Bank 0.62mi.
Cash point 0.62mi.
Chemist 660'
Doctor 3mi.
Hospital 9mi.



general floor plan



general floor plan

Holiday lettings Murcia - Costa Cálida "Chalet"

3

[Book now](#)



Swimming pool

Interior

- **Receive up to :**

from 1 to 12 person(s)

- **Liveable floor area :**

2,700 Sq.ft.

- **Interior layout :**

8 Room(s), 6 bedroom(s), 2 bathroom, 2 shower room, sitting room, separate kitchen, dining room, cosy nook, tv room, dressing room, laundry room, patio, veranda

- **Sleeps - bed(s) :**

2 double bed(s), 8 single bed(s), 1 folding bed(s) 1 pers

- **Guest facilities :**

Fireplace, T.V., DVD player, t.v points, cable/satellite, internet access, wifi, cupboard, Hanging wardrobe, hair dryer, fly screens, mobile cool air fan, ceiling paddle fan, wood-burning stove, Glazed in area, Rolling shutters, entry phone system

- **Appliances :**

Crockery/cutlery, kitchen utensils, cafetiere, electric coffee maker, electric kettle, toaster, juicer, fondue set, electric cooker, electric hobs, oven, micro-wave oven, extractor hood, refrigerator, dish washer, washing machine, vacuum cleaner, iron, ironing board

Exterior

- **Ground surface :**

6,500 Sq.ft.

- **Outside accommodation :**

Terrace 150 Sq.ft., covered terrace 323 Sq.ft., balcony 270 Sq.ft.

- **Outside setting :**

Private courtyard, enclosed grounds 4,300 Sq.ft., garden 2,150 Sq.ft.

- **Outside amenities :**

BBQ, garden table(s), garden seat(s), parasol, garden seated area, sun recliner(s), hammock(s), 4 rocking chair(s), outside shower facilities



general floor plan

Services

- **Washing :**

Sheets, Towels, Linen, Blanket(s), Quilt(s), Pillows

- **House :**

Cleaning on departure, Garden/swimming pool maintenance

For your guidance

- **For your guidance**

Children welcome

Pets accepted under certain conditions (ask the owner)

Mobile telephone network coverage

Water : hot/cold

Local voltage supply : 220-240V / 50Hz

Electricity supply : mains

- **Handicapped people welcome**

Wheelchair access



General

Advert No. 1459

www.ihacom.co.uk



>> HOLIDAY LETTINGS

BOOK DIRECT WITH THE OWNERS

Photo album - 1



general floor plan



general floor plan



Swimming pool



General



general floor plan

Photo album - 2



Kitchen Area



Kitchen Area



shower room



view from the dining-room



view from the swimming pool



general floor plan



Fireplace



Photo album - 3



view from the dining-room



view from the sitting-room



Kitchen Area



Kitchen Area



terrace



bathroom



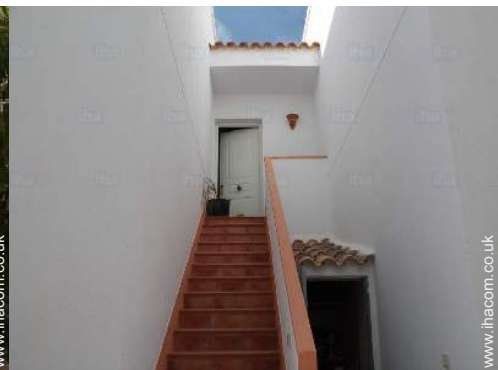
shower room



private swimming-pool



general floor plan




view from the patio

Location



Location & Access

" It is in the estate of S. Ginés, halfway between Isla Plana and la Azohía. 7 Km from Puerto de Mazarrón and Cartagena 20. Be reachable by highway from anywhere, until the last 13 Km. "

 GPS coordinates in degrees, minutes, seconds: Latitude 37°34'16"N - Longitude 1° 11'3"W (Dwelling)

Address

→ Avda de occidente 30 urb de S. Ginés.
30868 La Azohia

→ Distance : 12.5mi.
→ Time : 20'

• Airport Murcia San Javier

→ Murcia (city), Murcia, Spain
→ Distance : 25mi.
→ Time : 40'

• Puerto de Mazarrón : (1.85mi.)

• Isla Plana : (0.62mi.)

• Cartagena : (12.5mi.)

• Motorway (junction) de andalucía

→ Alhama de Murcia, Murcia, Spain
→ Distance : 25mi.
→ Time : 30'

• Train station Cartagena

→ Cartagena, Murcia, Spain

Contact

Spoken languages



Holiday lettings Murcia - Costa Cálida "Chalet"

[Book now](#)

Availability calendar - from : september 2019

Sep	Su	M	Tu	W	Th	F	Sa	Su	M	Tu	W	Th	F	Sa	Su	M	Tu	W	Th	F	Sa	Su	M							
2019	1	2	3	4	5	6	7	8	9	10	11	12	13	14	15	16	17	18	19	20	21	22	23	24	25	26	27	28	29	30

Oct	Tu	W	Th	F	Sa	Su	M	Tu	W	Th	F	Sa	Su	M	Tu	W	Th	F	Sa	Su	M	Tu	W	Th							
2019	1	2	3	4	5	6	7	8	9	10	11	12	13	14	15	16	17	18	19	20	21	22	23	24	25	26	27	28	29	30	31
	-	-	-	-	-	-	-	-	-	-	-	-	-	-	-	-	-	-	-	-	-	-	-	-	-	-	-	-	-	-	

Nov	F	Sa	Su	M	Tu	W	Th	F	Sa	Su	M	Tu	W	Th	F	Sa	Su	M	Tu	W	Th	F	Sa							
2019	1	2	3	4	5	6	7	8	9	10	11	12	13	14	15	16	17	18	19	20	21	22	23	24	25	26	27	28	29	30
	-	-	-	-	-	-	-	-	-	-	-	-	-	-	-	-	-	-	-	-	-	-	-	-	-	-	-	-	-	-

Dec	Su	M	Tu	W	Th	F	Sa	Su	M	Tu	W	Th	F	Sa	Su	M	Tu	W	Th	F	Sa	Su	M	Tu							
2019	1	2	3	4	5	6	7	8	9	10	11	12	13	14	15	16	17	18	19	20	21	22	23	24	25	26	27	28	29	30	31
	-	-	-	-	-	-	-	-	-	-	-	-	-	-	-	-	-	-	-	-	-	-	-	-	-	-	-	-	-	-	

Jan	W	Th	F	Sa	Su	M	Tu	W	Th	F	Sa	Su	M	Tu	W	Th	F	Sa	Su	M	Tu	W	Th	F							
2020	1	2	3	4	5	6	7	8	9	10	11	12	13	14	15	16	17	18	19	20	21	22	23	24	25	26	27	28	29	30	31
	-	-	-	-	-	-	-	-	-	-	-	-	-	-	-	-	-	-	-	-	-	-	-	-	-	-	-	-	-	-	

Feb	Sa	Su	M	Tu	W	Th	F	Sa	Su	M	Tu	W	Th	F	Sa	Su	M	Tu	W	Th	F	Sa							
2020	1	2	3	4	5	6	7	8	9	10	11	12	13	14	15	16	17	18	19	20	21	22	23	24	25	26	27	28	29
	-	-	-	-	-	-	-	-	-	-	-	-	-	-	-	-	-	-	-	-	-	-	-	-	-	-	-	-	-

Mar	Su	M	Tu	W	Th	F	Sa	Su	M	Tu	W	Th	F	Sa	Su	M	Tu	W	Th	F	Sa	Su	M	Tu							
2020	1	2	3	4	5	6	7	8	9	10	11	12	13	14	15	16	17	18	19	20	21	22	23	24	25	26	27	28	29	30	31
	-	-	-	-	-	-	-	-	-	-	-	-	-	-	-	-	-	-	-	-	-	-	-	-	-	-	-	-	-	-	

Apr	W	Th	F	Sa	Su	M	Tu	W	Th	F	Sa	Su	M	Tu	W	Th	F	Sa	Su	M	Tu	W	Th							
2020	1	2	3	4	5	6	7	8	9	10	11	12	13	14	15	16	17	18	19	20	21	22	23	24	25	26	27	28	29	30
	-	-	-	-	-	-	-	-	-	-	-	-	-	-	-	-	-	-	-	-	-	-	-	-	-	-	-	-	-	-

May	F	Sa	Su	M	Tu	W	Th	F	Sa	Su	M	Tu	W	Th	F	Sa	Su	M	Tu	W	Th	F	Sa	Su							
2020	1	2	3	4	5	6	7	8	9	10	11	12	13	14	15	16	17	18	19	20	21	22	23	24	25	26	27	28	29	30	31
	-	-	-	-	-	-	-	-	-	-	-	-	-	-	-	-	-	-	-	-	-	-	-	-	-	-	-	-	-	-	

June	M	Tu	W	Th	F	Sa	Su	M	Tu	W	Th	F	Sa	Su	M	Tu	W	Th	F	Sa	Su	M	Tu							
2020	1	2	3	4	5	6	7	8	9	10	11	12	13	14	15	16	17	18	19	20	21	22	23	24	25	26	27	28	29	30
	-	-	-	-	-	-	-	-	-	-	-	-	-	-	-	-	-	-	-	-	-	-	-	-	-	-	-	-	-	-



Holiday lettings La Azohia - Costa Cálida "Chalet"

9

[Book now](#)



Availability calendar - from : june 2020

Jul	W	Th	F	Sa	Su	M	Tu	W	Th	F	Sa	Su	M	Tu	W	Th	F	Sa	Su	M	Tu	W	Th	F							
2020	1	2	3	4	5	6	7	8	9	10	11	12	13	14	15	16	17	18	19	20	21	22	23	24	25	26	27	28	29	30	31

Aug	Sa	Su	M	Tu	W	Th	F	Sa	Su	M	Tu	W	Th	F	Sa	Su	M	Tu	W	Th	F	Sa	Su	M							
2020	1	2	3	4	5	6	7	8	9	10	11	12	13	14	15	16	17	18	19	20	21	22	23	24	25	26	27	28	29	30	31

[Month : Next >>](#)

Rental rates - Villa - from 1 to 12 Person(s)

Rates	Night	Weekend	week	2 weeks	Month
 Low season	£182* > 2	£364*	£546*	£728*	£1001*
 Mid season	-	£364*	£546*	£1001*	£1820*
 High season	-	-	£1310*	£2184*	£4095*
 Festive specials	£205* > 2	£410*	£1019*	-	-

> Minimum Night

[Book now](#)

Booking conditions

• Reservation

→ Payment made upon reservation :
20% of rental sum

Accepted methods of payment

• Cheque • Cash

[▶ Book now](#)

[▶ Contact the owner](#)

Contact directly the property owners

www.ihacom.co.uk

Advert No.

1459

[>> Book now <<](#)

Contact

Spoken languages



* Converted at the rate indicated : €100 = \$110 = £91

Advert No. 1459

www.ihacom.co.uk



[>> HOLIDAY LETTINGS](#)

[BOOK DIRECT WITH THE OWNERS](#)