

# Holiday lettings Joppolo "Villa Bella Vista"



Villa, detached, 1 floor in a(an) Property

Setting : seaside, tranquil

Capacity : from 4 to 5 person(s)

Bedroom(s) : 2

Joppolo - Province of Vibo Valentia (VV) - Calabria  
Italy

Advert No. 21307

[www.ihacom.co.uk](http://www.ihacom.co.uk)



>> HOLIDAY LETTINGS

BOOK DIRECT WITH THE OWNERS

## Holiday lettings



Villa, detached, 1 floor in a(an) Property

- **Ideal for family, couples with baby**
- **View :** panoramic, dominant, sea/ocean, garden/park, fantastic sunset, nightlights
- **Setting :** seaside, tranquil
- **Exposure :** South

## Assets

- **Parking :**  
Covered parking : 2 carport.

**Benefits :**  
Private beach

## Surroundings & location



Seaside



Horse riding



Thalasso

### Leisure

- **Leisure activities less than 20 km / 12 miles :**

Pedalo, snorkelling, scuba diving, boat trips, horse trekking

- **Supervised :**

Dive school, riding school

- **Attractions and relaxation :**

Bar/pub, discotheque, restaurant

### Surroundings

- **Locality :**

Sandy beach 0.5mi.



garden/park view



bathroom



Outside setting



bedroom

### Interior

- **Receive up to :**  
from 4 to 5 person(s) (2 adults, 3 children)
- **Liveable floor area :**  
750 Sq.ft.
- **Interior layout :**  
2 bedroom(s), 1 bathroom, 1 shower room, 1 WC, separate kitchen, dining room, laundry room, patio
- **Sleeps - bed(s) :**  
1 double bed(s), 1 sofa bed(s) 2 pers, 3 single bed(s), 1 baby cot(s), 1 possible extra bed(s)
- **Guest facilities :**  
T.V., cable/satellite, internet access, wifi, wardrobe, Hanging wardrobe, safe deposit box, hair dryer, fly screens, fully air conditioned, central heating, Curtains, Double glazed, remote controlled gates
- **Appliances :**  
Crockery/cutlery, kitchen utensils, cafetiere, electric espresso coffee maker, electric kettle, juicer, gas cooker, oven, micro-wave oven, extractor hood, refridgerator, freezer, washing machine, iron, ironing board

### Exterior

- **Ground surface :**  
8,600 Sq.ft.
- **Outside accommodation :**  
Balcony 65 Sq.ft., sundeck 430 Sq.ft.
- **Outside setting :**  
Private courtyard, enclosed grounds, garden, landscaped garden
- **Outside amenities :**  
BBQ, gas BBQ, garden table(s), garden seat (s), parasol, outside shower facilities



kitchen

### Services

- **Washing :**  
Sheets (1 X / per week), Towels (1 X / per week)
- **House :**  
Cleaning on departure supplement (+£27\*)

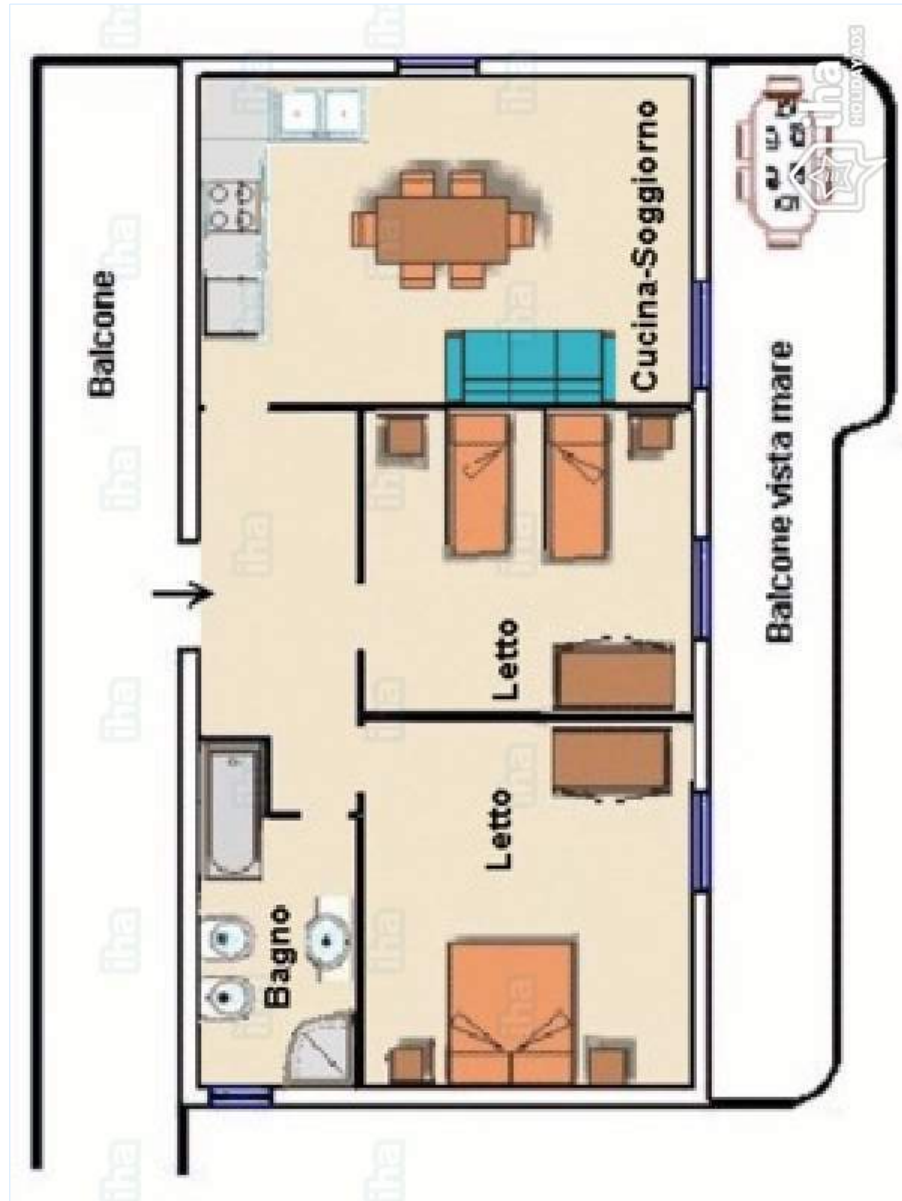
### For your guidance

- **For your guidance**  
Children welcome  
Pets accepted under certain conditions (ask the owner)  
Present on site : pets  
Mobile telephone network coverage



bedroom

Floor plan



[www.ihacom.co.uk](http://www.ihacom.co.uk)

Photo album - 1



garden/park view



Outside setting



bathroom



bedroom



bedroom

Photo album - 2



kitchen

kitchen

bathroom



northerly view



Seaside



Seaside



Seaside



Seaside



Seaside



Seaside

### Location



### Location & Access



GPS coordinates in degrees, minutes, seconds: Latitude 38°36'25"N - Longitude 15°51'41"E (Dwelling)

#### Address

→ Via Stazione, snc  
89863 Joppolo

#### • Airport Lamezia Terme

→ Lamezia Terme, Province of Catanzaro,  
Calabria, Italy  
→ Distance : 43,5mi.  
→ Time : 45'

#### • Train station Ricadi

→ Ricadi, Province of Vibo Valentia,  
Calabria, Italy  
→ Distance : 4.5mi.  
→ Time : 5'

#### • Motorway (junction) Salerno/Reggio Calabria

→ Vibo Valentia, Province of Vibo Valentia,  
Calabria, Italy  
→ Distance : 18.5mi.

→ Time : 40'

• Capo Vaticano : (4.5mi.)

• Tropea : (8.7mi.)

• Nicotera : (4.5mi.)

### Contact

Spoken languages



# Holiday lettings Province of Vibo Valentia - Calabria "Villa Bella Vista"

[Book now](#)

## Availability calendar - from : december 2017

Dec	F	Sa	Su	M	Tu	W	Th	F	Sa	Su	M	Tu	W	Th	F	Sa	Su	M	Tu	W	Th	F	Sa	Su							
2017	1	2	3	4	5	6	7	8	9	10	11	12	13	14	15	16	17	18	19	20	21	22	23	24	25	26	27	28	29	30	31
																	-	-	-	-	-	-	-	-	-	-	-	-	-	-	

Jan	M	Tu	W	Th	F	Sa	Su	M	Tu	W	Th	F	Sa	Su	M	Tu	W	Th	F	Sa	Su	M	Tu	W							
2018	1	2	3	4	5	6	7	8	9	10	11	12	13	14	15	16	17	18	19	20	21	22	23	24	25	26	27	28	29	30	31
	-	-	-	-	-	-	-	-	-	-	-	-	-	-	-	-	-	-	-	-	-	-	-	-	-	-	-	-	-	-	

Feb	Th	F	Sa	Su	M	Tu	W	Th	F	Sa	Su	M	Tu	W	Th	F	Sa	Su	M	Tu	W								
2018	1	2	3	4	5	6	7	8	9	10	11	12	13	14	15	16	17	18	19	20	21	22	23	24	25	26	27	28	
	-	-	-	-	-	-	-	-	-	-	-	-	-	-	-	-	-	-	-	-	-	-	-	-	-	-	-	-	-

Mar	Th	F	Sa	Su	M	Tu	W	Th	F	Sa	Su	M	Tu	W	Th	F	Sa	Su	M	Tu	W	Th	F	Sa							
2018	1	2	3	4	5	6	7	8	9	10	11	12	13	14	15	16	17	18	19	20	21	22	23	24	25	26	27	28	29	30	31
	-	-	-	-	-	-	-	-	-	-	-	-	-	-	-	-	-	-	-	-	-	-	-	-	-	-	-	-	-	-	

Apr	Su	M	Tu	W	Th	F	Sa	Su	M	Tu	W	Th	F	Sa	Su	M	Tu	W	Th	F	Sa	Su	M							
2018	1	2	3	4	5	6	7	8	9	10	11	12	13	14	15	16	17	18	19	20	21	22	23	24	25	26	27	28	29	30
	-	-	-	-	-	-	-	-	-	-	-	-	-	-	-	-	-	-	-	-	-	-	-	-	-	-	-	-	-	-

May	Tu	W	Th	F	Sa	Su	M	Tu	W	Th	F	Sa	Su	M	Tu	W	Th	F	Sa	Su	M	Tu	W	Th							
2018	1	2	3	4	5	6	7	8	9	10	11	12	13	14	15	16	17	18	19	20	21	22	23	24	25	26	27	28	29	30	31
	-	-	-	-	-	-	-	-	-	-	-	-	-	-	-	-	-	-	-	-	-	-	-	-	-	-	-	-	-	-	

June	F	Sa	Su	M	Tu	W	Th	F	Sa	Su	M	Tu	W	Th	F	Sa	Su	M	Tu	W	Th	F	Sa							
2018	1	2	3	4	5	6	7	8	9	10	11	12	13	14	15	16	17	18	19	20	21	22	23	24	25	26	27	28	29	30
	-	-	-	-	-	-	-	-	-	-	-	-	-	-	-	-	-	-	-	-	-	-	-	-	-	-	-	-	-	-

Jul	Su	M	Tu	W	Th	F	Sa	Su	M	Tu	W	Th	F	Sa	Su	M	Tu	W	Th	F	Sa	Su	M	Tu							
2018	1	2	3	4	5	6	7	8	9	10	11	12	13	14	15	16	17	18	19	20	21	22	23	24	25	26	27	28	29	30	31
	-	-	-	-	-	-	-	-	-	-	-	-	-	-	-	-	-	-	-	-	-	-	-	-	-	-	-	-	-	-	

Aug	W	Th	F	Sa	Su	M	Tu	W	Th	F	Sa	Su	M	Tu	W	Th	F	Sa	Su	M	Tu	W	Th	F							
2018	1	2	3	4	5	6	7	8	9	10	11	12	13	14	15	16	17	18	19	20	21	22	23	24	25	26	27	28	29	30	31
	-	-	-	-	-	-	-	-	-	-	-	-	-	-	-	-	-	-	-	-	-	-	-	-	-	-	-	-	-	-	

Sep	Sa	Su	M	Tu	W	Th	F	Sa	Su	M	Tu	W	Th	F	Sa	Su	M	Tu	W	Th	F	Sa	Su							
2018	1	2	3	4	5	6	7	8	9	10	11	12	13	14	15	16	17	18	19	20	21	22	23	24	25	26	27	28	29	30
	-	-	-	-	-	-	-	-	-	-	-	-	-	-	-	-	-	-	-	-	-	-	-	-	-	-	-	-	-	-








Availability calendar - from : september 2018

Oct	M	Tu	W	Th	F	Sa	Su	M	Tu	W	Th	F	Sa	Su	M	Tu	W	Th	F	Sa	Su	M	Tu	W							
2018	1	2	3	4	5	6	7	8	9	10	11	12	13	14	15	16	17	18	19	20	21	22	23	24	25	26	27	28	29	30	31
	-	-	-	-	-	-	-	-	-	-	-	-	-	-	-	-	-	-	-	-	-	-	-	-	-	-	-	-	-		

Nov	Th	F	Sa	Su	M	Tu	W	Th	F	Sa	Su	M	Tu	W	Th	F	Sa	Su	M	Tu	W	Th	F							
2018	1	2	3	4	5	6	7	8	9	10	11	12	13	14	15	16	17	18	19	20	21	22	23	24	25	26	27	28	29	30
	-	-	-	-	-	-	-	-	-	-	-	-	-	-	-	-	-	-	-	-	-	-	-	-	-	-	-	-	-	

[Month : Next >>](#)

Rental rates - Villa - from 4 to 5 Person(s)

Rates	Night	Weekend	week	2 weeks	Month
 Low season	-	-	£314* (Saturday)	-	-
 Mid season	-	-	£403* (Saturday)	-	-
 High season	-	-	£672*	-	-

(Check-in day)

[Book now](#)

Booking conditions

• **Reservation**

→ Payment made upon reservation :  
30% of rental sum  
→ Payment balance :  
on handing over the keys

• **rentals**

→ Service charges included  
→ Cleaning charge levy on departure : £27\*  
→ Anticipated supplement for :  
- animals  
- supplementary bed(s)

[▶ Book now](#)

[▶ Contact the owner](#)

Accepted methods of payment

• International Money Order • Bank  
transfer (wire) • Cheque • Cash

Contact directly the property owners

[www.ihacom.co.uk](http://www.ihacom.co.uk)

Advert No.

21307

[>> Book now <<](#)

Contact

Spoken  
languages



\* Converted at the rate indicated : €100 = \$117.29 = £89.59

Advert No. 21307

[www.ihacom.co.uk](http://www.ihacom.co.uk)

