

# Holiday lettings Gulpilhares Flat-Apartments

Feel at home and take Portugal into your heart: next to the ocean, near everything else.



**Flat-Apartments** 1st floor, shared entrance, in a(an) Apartment block 1 floor

Setting : seaside, pleasant

Capacity : from 1 to 6 person(s)

Bedroom(s) : 2

Gulpilhares - District of Porto - Norte Region (Portugal)  
Portugal

Advert No. 20950

[www.ihacom.co.uk](http://www.ihacom.co.uk)



>> HOLIDAY LETTINGS

BOOK DIRECT WITH THE OWNERS

### Holiday lettings



Flat-Apartments 1st floor, shared entrance, in a(an) Apartment block 1 floor

- **Ideal for all age groups, family**
- **View :** sea/ocean, square, street/avenue
- **Setting :** seaside, pleasant
- **Exposure :** South

" The flat has 2 bedrooms with double beds, extra beds for 2 more people, and a cradle. It also has a complete bathroom, a hall, a kitchen (with oven, cooker, microwave, dishwasher and fridge), a laundry, a pantry, a balcony (with sun chairs), a living and sitting room (with TV and CD player), private garage and free Internet. The house is fully furnished, has all the needed electrical devices and the kitchen ware, linen for the bed, bathroom and kitchen are provided. We also have bicycles for our guests, as well as the goodies to take to the beach. In winter, the fireplace can be used. "

### Assets

- **Parking :**  
Covered parking : 1 closed individual place (s).
- **baby equipment :**  
Baby bath



façade

### Surroundings & location



" Fantastic and quiet place to enjoy leisure time: from the beach to surf, from golf to casino, from restaurants with seafood and fresh fish to barbecues or restaurants from different parts of the world, from leisure areas for kids to shopping centres, cinemas and discos we will find it all. It is also an excellent starting point to visit other cities, like Coimbra and Aveiro, or regions, like Douro Valley. The cultural and gastronomic richness of Oporto city is very big, and there you can visit museums, churches, do boat trips, or simply stroll around the streets to feel the movement. "

#### Leisure

- **Leisure activities less than 20 km / 12 miles :**

Golf, tennis

- **Attractions and relaxation :**

Bar/pub, restaurant, karaoke, park and garden, leisure park, zoo/animal park, museum, festivals, local craftshop, cellar and wine tasting, casino, health farm, fitness centre

#### Surroundings

- **Locality :**

Sea/ocean 660'  
Sandy beach 660'  
Public swimming pool 3mi.  
18 hole golf course 1.85mi.

- **Amenities :**

Nursery 0.3mi.  
Village centre 0.93mi.  
Bus stop / bus station 0.3mi.  
Household linens for hire/laundry services 330'  
Breadshop 330'  
Caterer 330'  
Local shops 330'  
Supermarket 330'  
Hairdressing salon 330'  
Internet cafe 330'  
Post office 4.5mi.  
Bank 0.3mi.  
Cash point 330'  
Chemist 0.93mi.



bedroom



bedroom



guest bedroom

### Interior

- **Receive up to :**  
from 1 to 6 person(s) (5 adults, 1 children)
- **Liveable floor area :**  
1,076 Sq.ft.
- **Interior layout :**  
2 bedroom(s), 1 bathroom, living room 110 Sq.ft., sitting room 110 Sq.ft., separate kitchen, dining room, dining area, tv room, reception hall, laundry room, veranda
- **Sleeps - bed(s) :**  
2 double bed(s), 1 futon 1 pers, 1 baby cot (s), 1 camp bed(s)
- **Guest facilities :**  
Fireplace, lift, T.V., board games, wardrobe, cupboard, Hanging wardrobe, hair dryer, Curtains
- **Appliances :**  
Kitchen utensils, cafetiere, electric coffee maker, electric cooker, oven, micro-wave oven, refridgerator, dish washer, washing machine, vacuum cleaner, iron, ironing board



guest bedroom

### Exterior

- **Outside accommodation :**  
Balcony 65 Sq.ft.
- **Outside amenities :**  
2 chaise(s) longue(s), 2 rocking chair(s)



reception hall

### Services

- **Washing :**  
Sheets (1 X / per week), Towels (1 X / per week), Pillows (1 X / per week)
- **House :**  
Cleaning on departure, Parking, Airport transfers supplement

### For your guidance

- **For your guidance**  
Children welcome  
No pet allowed  
Non smoking rental, mobile telephone network coverage, personal transport advisable  
Water : hot/cold

Photo album - 1



façade



bedroom



bedroom



guest bedroom



guest bedroom

Photo album - 2



reception hall

reception hall

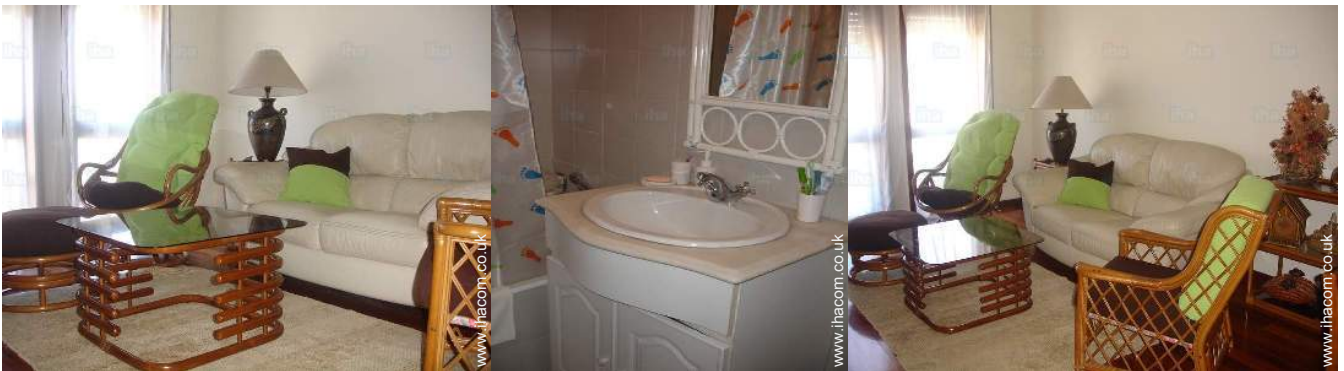
Kitchen Area



kitchen

kitchen

laundry room



living room

bathroom

living room



dining area

Photo album - 3



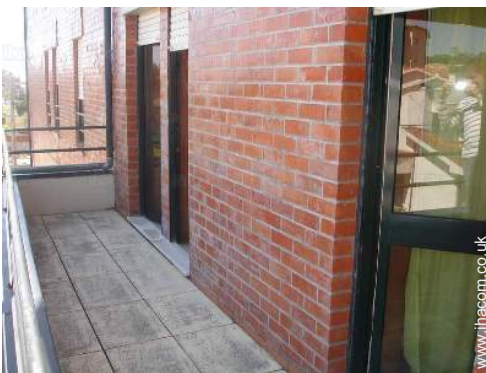
dining room



dining room



dining room



balcony



balcony



Parking



sea view



view over the sea



Leisure




park and garden

### Location



### Location & Access

" 200 metres from the beach, very easy access from the highway and with public means of transportation. The train station is 200 metres away and it takes you to the historical centre of Oporto in 8 minutes. From there, there is direct connection with the subway to the airport. "

 GPS coordinates in degrees, minutes, seconds: Latitude 41°4'21.266"N - Longitude 8°39'5.003"W ([Dwelling](#))

#### Address

→ Rua das Moutadas, 191-2º direito  
4400 Gulpilhares

• Porto : (11,2mi.)

#### • Motorway (junction) Arcozelo

→ Arcozelo, District of Porto, Norte Region  
(Portugal), Portugal  
→ Distance : 1.25mi.  
→ Time : 15'

#### • Airport Porto Francisco Sá Carneiro

→ Porto, District of Porto, Norte Region  
(Portugal), Portugal  
→ Distance : 11,2mi.  
→ Time : 45'

### Contact

Spoken  
languages



# Holiday lettings District of Porto - Norte Region (Portugal) Flat-Apartments

Availability calendar - from : march 2018

Mar	Th	F	Sa	Su	M	Tu	W	Th	F	Sa	Su	M	Tu	W	Th	F	Sa	Su	M	Tu	W	Th	F	Sa	Su	M	Tu	W	Th	F	Sa
2018	1	2	3	4	5	6	7	8	9	10	11	12	13	14	15	16	17	18	19	20	21	22	23	24	25	26	27	28	29	30	31

Apr	Su	M	Tu	W	Th	F	Sa	Su	M	Tu	W	Th	F	Sa	Su	M	Tu	W	Th	F	Sa	Su	M	Tu	W	Th	F	Sa	Su	M
2018	1	2	3	4	5	6	7	8	9	10	11	12	13	14	15	16	17	18	19	20	21	22	23	24	25	26	27	28	29	30
	-	-	-	-	-	-	-	-	-	-	-	-	-	-	-	-	-	-	-	-	-	-	-	-	-	-	-	-	-	-

May	Tu	W	Th	F	Sa	Su	M	Tu	W	Th	F	Sa	Su	M	Tu	W	Th	F	Sa	Su	M	Tu	W	Th	F	Sa	Su	M	Tu	W	Th
2018	1	2	3	4	5	6	7	8	9	10	11	12	13	14	15	16	17	18	19	20	21	22	23	24	25	26	27	28	29	30	31
	-	-	-	-	-	-	-	-	-	-	-	-	-	-	-	-	-	-	-	-	-	-	-	-	-	-	-	-	-	-	-

June	F	Sa	Su	M	Tu	W	Th	F	Sa	Su	M	Tu	W	Th	F	Sa	Su	M	Tu	W	Th	F	Sa	Su	M	Tu	W	Th	F	Sa
2018	1	2	3	4	5	6	7	8	9	10	11	12	13	14	15	16	17	18	19	20	21	22	23	24	25	26	27	28	29	30
	-	-	-	-	-	-	-	-	-	-	-	-	-	-	-	-	-	-	-	-	-	-	-	-	-	-	-	-	-	-

Jul	Su	M	Tu	W	Th	F	Sa	Su	M	Tu	W	Th	F	Sa	Su	M	Tu	W	Th	F	Sa	Su	M	Tu	W	Th	F	Sa	Su	M	Tu
2018	1	2	3	4	5	6	7	8	9	10	11	12	13	14	15	16	17	18	19	20	21	22	23	24	25	26	27	28	29	30	31
	-	-	-	-	-	-	-	-	-	-	-	-	-	-	-	-	-	-	-	-	-	-	-	-	-	-	-	-	-	-	-

Aug	W	Th	F	Sa	Su	M	Tu	W	Th	F	Sa	Su	M	Tu	W	Th	F	Sa	Su	M	Tu	W	Th	F	Sa	Su	M	Tu	W	Th	F
2018	1	2	3	4	5	6	7	8	9	10	11	12	13	14	15	16	17	18	19	20	21	22	23	24	25	26	27	28	29	30	31
	-	-	-	-	-	-	-	-	-	-	-	-	-	-	-	-	-	-	-	-	-	-	-	-	-	-	-	-	-	-	-

Sep	Sa	Su	M	Tu	W	Th	F	Sa	Su	M	Tu	W	Th	F	Sa	Su	M	Tu	W	Th	F	Sa	Su							
2018	1	2	3	4	5	6	7	8	9	10	11	12	13	14	15	16	17	18	19	20	21	22	23	24	25	26	27	28	29	30
	-	-	-	-	-	-	-	-	-	-	-	-	-	-	-	-	-	-	-	-	-	-	-	-	-	-	-	-	-	-

Oct	M	Tu	W	Th	F	Sa	Su	M	Tu	W	Th	F	Sa	Su	M	Tu	W	Th	F	Sa	Su	M	Tu	W	Th	F	Sa	Su	M	Tu	W
2018	1	2	3	4	5	6	7	8	9	10	11	12	13	14	15	16	17	18	19	20	21	22	23	24	25	26	27	28	29	30	31
	-	-	-	-	-	-	-	-	-	-	-	-	-	-	-	-	-	-	-	-	-	-	-	-	-	-	-	-	-	-	-

Nov	Th	F	Sa	Su	M	Tu	W	Th	F	Sa	Su	M	Tu	W	Th	F	Sa	Su	M	Tu	W	Th	F	Sa	Su	M	Tu	W	Th	F
2018	1	2	3	4	5	6	7	8	9	10	11	12	13	14	15	16	17	18	19	20	21	22	23	24	25	26	27	28	29	30
	-	-	-	-	-	-	-	-	-	-	-	-	-	-	-	-	-	-	-	-	-	-	-	-	-	-	-	-	-	-

Dec	Sa	Su	M	Tu	W	Th	F	Sa	Su	M	Tu	W	Th	F	Sa	Su	M	Tu	W	Th	F	Sa	Su	M							
2018	1	2	3	4	5	6	7	8	9	10	11	12	13	14	15	16	17	18	19	20	21	22	23	24	25	26	27	28	29	30	31
	-	-	-	-	-	-	-	-	-	-	-	-	-	-	-	-	-	-	-	-	-	-	-	-	-	-	-	-	-	-	

 Reserved





# Holiday lettings Gulpilhares - Portugal Flat-Apartments

9

[Book now](#)

## Availability calendar - from : december 2018



Jan	Tu	W	Th	F	Sa	Su	M	Tu	W	Th	F	Sa	Su	M	Tu	W	Th	F	Sa	Su	M	Tu	W	Th							
2019	1	2	3	4	5	6	7	8	9	10	11	12	13	14	15	16	17	18	19	20	21	22	23	24	25	26	27	28	29	30	31

Feb	F	Sa	Su	M	Tu	W	Th	F	Sa	Su	M	Tu	W	Th	F	Sa	Su	M	Tu	W	Th							
2019	1	2	3	4	5	6	7	8	9	10	11	12	13	14	15	16	17	18	19	20	21	22	23	24	25	26	27	28

 Reserved

[Month : Next >>](#)

## Rental rates - Flat-Apartments - from 1 to 6 Person(s)

Rates	Night	Weekend	week	2 weeks	Month
 Low season	£40* > 3	-	£280*	-	£623*
 High season	£58* > 3	-	£405*	-	£889*

> Minimum Night

[Book now](#)

### Booking conditions

- **Reservation**

→ Deposit required

- **rentals**

→ Service charges included

→ Day tax included

→ Cleaning charge on departure included

### Accepted methods of payment

• PayPal • Travellers Cheques • Cash

[▶ Book now](#)

[▶ Contact the owner](#)

Contact directly the property owners

[www.ihacom.co.uk](http://www.ihacom.co.uk)

Advert No.

20950

[>> Book now <<](#)

### Contact

Spoken languages



\* Converted at the rate indicated : €100 = \$123.46 = £88.94

Advert No. 20950

[www.ihacom.co.uk](http://www.ihacom.co.uk)

