

Holiday lettings Florence Flat-Apartments

Elegant Refurbished Apartment In Florence. Free Wifi. A/C, Elevator. Close to city centre yet far from the noise!



Flat-Apartments 1st floor, separate entrance, in a(an) Apartment block 4 floors

Setting : cultural, medieval

Capacity : from 1 to 7 person(s)

Bedroom(s) : 3

Room(s) : 8

Florence - Province of Florence (FI) - Tuscany

Italy

Reservation : +44 (0) 7469672114 (United Kingdom)

www.ihacom.co.uk

Advert No. 65218



>> HOLIDAY LETTINGS

BOOK DIRECT WITH THE OWNERS

Holiday lettings



Flat-Apartments 1st floor, separate entrance, in a(an) Apartment block 4 floors

- **Ideal for all age groups, family groups**
- **View** : panoramic, unobscured, town, monument
- **Setting** : cultural, medieval
- **Exposure** : South-west

" LISTING! Elegant and comfortable apartment close to the city centre just outside the ZTL area, therefore, hassle free if you have a car. We are at a 15 minute walking distance from city centre and 25 minutes walking distance from Duomo, Uffizzi Gallery, Piazza Signoria, Statue of David, Ponte Vecchio etc and great shopping too! You can take the bus if you prefer. It is a pleasant walk with pastry shops and coffee bars along the way. The apartment is spacious, airy and bright. There is a baker, butcher, laundromat, wine-shop, grocery store close by. Very convenient and ideal location far from the noise but at walking distance from all attractions. The beautiful Villa Fabbricotti, Stibbert Park and Museum is right behind us and at walking distance to Giardino del'Orticoltura with its beautiful conservatory. Our apartment has been newly refurbished. We used high quality fixtures through out. It is elegant and comfortable with up-to-date amenities. Brand new designer bathrooms with new fixtures. The spacious double living room has a large sofa bed and can be closed with sliding doors. This offers complete privacy and is used as the 3rd bedroom. The master bedroom has an en suite bathroom. The other bathroom is in the hallway. The apartment has 2 balconies and has a spacious feeling. Unlimited Wifi access, air conditioning, linen and taxes are all included. There are NO hidden costs. "

Assets

- **baby equipment** :
Playpen

Surroundings & location



City



Culture

" Car: not necessary. Florence is one of the most stunning and well known cities in the world. It offers great food and wine and has breathtaking history, art and architecture. It is perfect for a short city break or longer stay all year around. The small airport so close to the city and the proximity to the train station is ideal. Shopping is fantastic in this city where most of the world's renowned designers come from! Please don't forget Fiesole which is a jewel with the most amazing views. Florence is close to Pisa, San Gimignano, Siena, Lucca, the Chianti wine region etc. This makes for perfect day trips. The proximity of the high speed train makes it easy to go to Rome and Venice too. "

Leisure

- **Leisure activities less than 20 km / 12 miles** :

Canoeing, golf, tennis

- **Supervised** :

Tennis school, riding school

- **Attractions and relaxation** :

Bar/pub, discotheque, restaurant, cinema, park and garden, art gallery, historical site, museum, theatre, summer theatre, opera house, festivals, antiques & bric-a-brac, local craftshop, cellar and wine tasting, health farm, fitness centre

Surroundings

- **Locality** :

Public swimming pool 1.25mi.
Public tennis court 1.25mi.



Kitchen Area



Interior layout and facilities

Advert No. 65218

www.ihacom.co.uk





Kitchen Area

Exterior

- Outside accommodation :
Balcony 21.5 Sq.ft



master bedroom

Interior

- Receive up to :
from 1 to 7 person(s) (4 adults, 3 children)
- Liveable floor area :
1,300 Sq.ft.
- Interior layout :
8 Room(s), 3 bedroom(s), 2 bathroom, shower room, 2 WC, separate kitchen, dining area, reception hall, veranda
- Sleeps - bed(s) :
3 double bed(s), 2 super king-size bed(s), 1 sofa bed(s) 2 pers, 1 single bed(s)
- Guest facilities :
Lift, T.V., hi-fi system, DVD player, board games, book collection, film collection, cable/satellite, wifi, wardrobe, cupboard, Hanging wardrobe, hair dryer, heated towel rail, mosquito nets, fully air conditioned, central heating, Curtains, Blinds, Double glazed, Rolling shutters
- Appliances :
Crockery/cutlery, kitchen utensils, cafetiere, electric coffee maker, toaster, juicer, food processor, gas cooker, oven, micro-wave oven, refrigerator, freezer, dish washer, washing machine, clothes dryer, vacuum cleaner, iron, ironing board

Services

- Washing :
Sheets, Towels, Linen, Pillows
- House :
Cleaning on departure supplement (+£36*)

For your guidance

- For your guidance
Children welcome
No pet allowed
Non smoking rental, mobile telephone network coverage



view from the balcony

Photo album - 1



Interior layout and facilities



Kitchen Area

Kitchen Area



view from the balcony



master bedroom

Photo album - 2



master bedroom



large bedroom



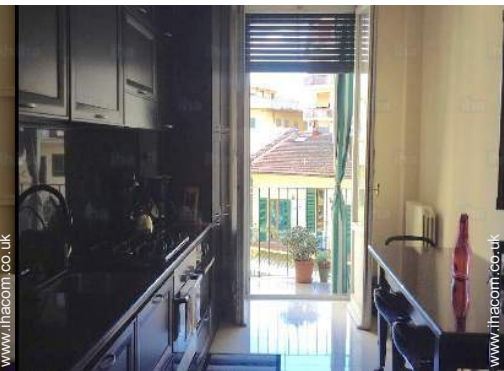
sofa bed(s) 2 pers



bedroom



bedroom



View from the property



reception hall



bathroom



view of a monument



view of the town

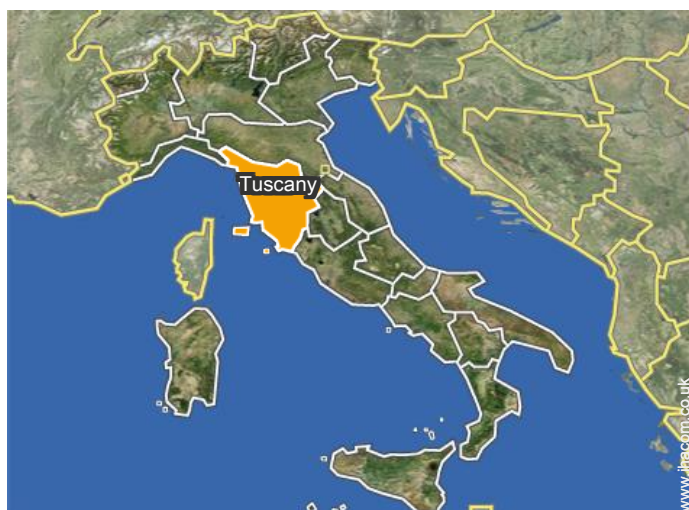


Attractions and relaxation




reception hall

Location



Location & Access

" We are located outside the central area and within 15 minutes walking distance from the centre. Very peaceful and away from the noise yet close to all the sites. We are close to beautiful parks. Check in time is at 4 pm and check out is before 10:30 am. If you require different times, please let us know and we will do our best. "

 GPS coordinates in degrees, minutes, seconds: Latitude 43°47'20"N - Longitude 11°15'18"E ([Dwelling](#))

Address

→ Via Melchiorre Gioia, 9
50100 Florence

• Florence : (0.62mi.)

• [Airport Florence Amerigo Vespucci](#)

→ Florence, Province of Florence, Tuscany,
Italy

→ Distance : 3mi.

→ Time : 10'

• [Train station Firenze Santa Maria Novella](#)

→ Florence, Province of Florence, Tuscany,
Italy

→ Distance : 1.85mi.

→ Time : 10'

Contact

Spoken languages



Holiday lettings Florence - Italy Flat-Apartments

7
[Book now](#)

Availability calendar - from : march 2018

Mar	Th	F	Sa	Su	M	Tu	W	Th	F	Sa	Su	M	Tu	W	Th	F	Sa	Su	M	Tu	W	Th	F	Sa	Su	M	Tu	W	Th	F	Sa
2018	1	2	3	4	5	6	7	8	9	10	11	12	13	14	15	16	17	18	19	20	21	22	23	24	25	26	27	28	29	30	31

Apr	Su	M	Tu	W	Th	F	Sa	Su	M	Tu	W	Th	F	Sa	Su	M	Tu	W	Th	F	Sa	Su	M	Tu	W	Th	F	Sa	Su	M
2018	1	2	3	4	5	6	7	8	9	10	11	12	13	14	15	16	17	18	19	20	21	22	23	24	25	26	27	28	29	30
	-	-	-	-	-	-	-	-	-	-	-	-	-	-	-	-	-	-	-	-	-	-	-	-	-	-	-	-	-	-

May	Tu	W	Th	F	Sa	Su	M	Tu	W	Th	F	Sa	Su	M	Tu	W	Th	F	Sa	Su	M	Tu	W	Th	F	Sa	Su	M	Tu	W	Th
2018	1	2	3	4	5	6	7	8	9	10	11	12	13	14	15	16	17	18	19	20	21	22	23	24	25	26	27	28	29	30	31
	-	-	-	-	-	-	-	-	-	-	-	-	-	-	-	-	-	-	-	-	-	-	-	-	-	-	-	-	-	-	-

June	F	Sa	Su	M	Tu	W	Th	F	Sa	Su	M	Tu	W	Th	F	Sa	Su	M	Tu	W	Th	F	Sa	Su	M	Tu	W	Th	F	Sa
2018	1	2	3	4	5	6	7	8	9	10	11	12	13	14	15	16	17	18	19	20	21	22	23	24	25	26	27	28	29	30
	-	-	-	-	-	-	-	-	-	-	-	-	-	-	-	-	-	-	-	-	-	-	-	-	-	-	-	-	-	-

Jul	Su	M	Tu	W	Th	F	Sa	Su	M	Tu	W	Th	F	Sa	Su	M	Tu	W	Th	F	Sa	Su	M	Tu	W	Th	F	Sa	Su	M	Tu
2018	1	2	3	4	5	6	7	8	9	10	11	12	13	14	15	16	17	18	19	20	21	22	23	24	25	26	27	28	29	30	31
	-	-	-	-	-	-	-	-	-	-	-	-	-	-	-	-	-	-	-	-	-	-	-	-	-	-	-	-	-	-	-

Aug	W	Th	F	Sa	Su	M	Tu	W	Th	F	Sa	Su	M	Tu	W	Th	F	Sa	Su	M	Tu	W	Th	F	Sa	Su	M	Tu	W	Th	F
2018	1	2	3	4	5	6	7	8	9	10	11	12	13	14	15	16	17	18	19	20	21	22	23	24	25	26	27	28	29	30	31
	-	-	-	-	-	-	-	-	-	-	-	-	-	-	-	-	-	-	-	-	-	-	-	-	-	-	-	-	-	-	-

Sep	Sa	Su	M	Tu	W	Th	F	Sa	Su	M	Tu	W	Th	F	Sa	Su	M	Tu	W	Th	F	Sa	Su	M	Tu	W	Th	F	Sa	Su
2018	1	2	3	4	5	6	7	8	9	10	11	12	13	14	15	16	17	18	19	20	21	22	23	24	25	26	27	28	29	30
	-	-	-	-	-	-	-	-	-	-	-	-	-	-	-	-	-	-	-	-	-	-	-	-	-	-	-	-	-	-

Oct	M	Tu	W	Th	F	Sa	Su	M	Tu	W	Th	F	Sa	Su	M	Tu	W	Th	F	Sa	Su	M	Tu	W	Th	F	Sa	Su	M	Tu	W
2018	1	2	3	4	5	6	7	8	9	10	11	12	13	14	15	16	17	18	19	20	21	22	23	24	25	26	27	28	29	30	31
	-	-	-	-	-	-	-	-	-	-	-	-	-	-	-	-	-	-	-	-	-	-	-	-	-	-	-	-	-	-	-

Nov	Th	F	Sa	Su	M	Tu	W	Th	F	Sa	Su	M	Tu	W	Th	F	Sa	Su	M	Tu	W	Th	F	Sa	Su	M	Tu	W	Th	F
2018	1	2	3	4	5	6	7	8	9	10	11	12	13	14	15	16	17	18	19	20	21	22	23	24	25	26	27	28	29	30
	-	-	-	-	-	-	-	-	-	-	-	-	-	-	-	-	-	-	-	-	-	-	-	-	-	-	-	-	-	-

Dec	Sa	Su	M	Tu	W	Th	F	Sa	Su	M	Tu	W	Th	F	Sa	Su	M	Tu	W	Th	F	Sa	Su	M	Tu	W	Th	F	Sa	Su	M
2018	1	2	3	4	5	6	7	8	9	10	11	12	13	14	15	16	17	18	19	20	21	22	23	24	25	26	27	28	29	30	31
	-	-	-	-	-	-	-	-	-	-	-	-	-	-	-	-	-	-	-	-	-	-	-	-	-	-	-	-	-	-	-



Holiday lettings Province of Florence - Tuscany Flat-Apartments

8
[Book now](#)

Availability calendar - from : december 2018

Jan	Tu	W	Th	F	Sa	Su	M	Tu	W	Th	F	Sa	Su	M	Tu	W	Th	F	Sa	Su	M	Tu	W	Th							
2019	1	2	3	4	5	6	7	8	9	10	11	12	13	14	15	16	17	18	19	20	21	22	23	24	25	26	27	28	29	30	31
-	-	-	-	-	-	-	-	-	-	-	-	-	-	-	-	-	-	-	-	-	-	-	-	-	-	-	-	-	-	-	

Feb	F	Sa	Su	M	Tu	W	Th	F	Sa	Su	M	Tu	W	Th	F	Sa	Su	M	Tu	W	Th								
2019	1	2	3	4	5	6	7	8	9	10	11	12	13	14	15	16	17	18	19	20	21	22	23	24	25	26	27	28	
-	-	-	-	-	-	-	-	-	-	-	-	-	-	-	-	-	-	-	-	-	-	-	-	-	-	-	-	-	-

[Month : Next >>](#)

Rental rates - Flat-Apartments - from 1 to 7 Person(s)

Rates	Night	Weekend	week	2 weeks	Month
■ Mid season	£107* > 3	-	£623*	-	-
■ High season	£116* > 3	-	£712*	-	-

> Minimum Night

[Book now](#)

Booking conditions

• Reservation

- Payment made upon reservation : 30% of rental sum
- Payment balance : 2 weeks before the stay
- Deposit required : £178*

• rentals

- Service charges included
- Day tax included
- Cleaning charge levy on departure : £40*

[▶ Book now](#)

[▶ Contact the owner](#)

Accepted methods of payment

- Bank transfer (wire) • PayPal

Contact directly the property owners

www.ihacom.co.uk

Advert No.

65218

[>> Book now <<](#)

Contact

Spoken languages



* Converted at the rate indicated : €100 = \$123.46 = £88.94

Advert No. 65218

www.ihacom.co.uk

