

# Holiday lettings Flic en Flac "Les Camelias"



**Flat-Apartments** ground floor, shared entrance, in a(an) Estate 3 floors

Setting : pleasant, quiet

Capacity : from 1 to 5 person(s)

Bedroom(s) : 2

Room(s) : 3

Flic en Flac - Mauritius Island

Mauritius

Reservation : +230 (0) 6983603 (Mauritius)

Advert No. 65747

www.ihacom.co.uk



>> HOLIDAY LETTINGS

BOOK DIRECT WITH THE OWNERS

### Holiday lettings



Flat-Apartments ground floor, shared entrance, in a(an) Estate 3 floors

- **Ideal for all age groups, retired people**
- **View :** sea/ocean, swimming pool, courtyard, fantastic sunset
- **Setting :** pleasant, quiet

### Assets

- **Swimming pool :**  
Shared swimming pool, rectangular, inside (open from '01 january' till '31 december')
- **Parking :**  
Parking uncovered : internal.
- **baby equipment :**  
Baby chair

**Benefits :**  
Direct access to the beach

### Surroundings & location



Seaside

#### Leisure

- **Leisure activities less than 20 km / 12 miles :**

Bathing, snorkelling, scuba diving, surfing, kite surfing, boat trips, horse trekking, go-karting, fishing, deep-sea angling, angling, spear fishing

- **Supervised :**

Dive school

- **Attractions and relaxation :**

Bar/pub, discotheque, restaurant, casino, fitness centre

#### Surroundings

- **Locality :**

Sea/ocean 330'  
Sandy beach 330'  
Windsurfing spots 1.85mi.  
Surfing spots 1.85mi.

- **Amenities :**

Village centre 330'  
Bus stop / bus station 330'  
Bike/mountain bike hire 660'  
Scooter/motorbike hire 660'  
Car rental 660'  
Boat rental 660'  
Scuba diving material hire 330'  
Breadshop 660'  
Caterer 330'  
Local shops 330'  
Supermarket 660'  
Internet cafe 660'  
Post office 660'  
Bank 660'  
Cash point 660'  
Doctor 660'  
Hospital 660'



bedroom



master bedroom



general floor plan



### Exterior

- Ground surface :  
7,500 Sq.ft.
- Outside accommodation :  
Terrace 110 Sq.ft.
- Outside setting :  
Private courtyard 2,150 Sq.ft., enclosed grounds



### Interior

- Receive up to :  
from 1 to 5 person(s) (4 adults, 1 children)
- Liveable floor area :  
650 Sq.ft.
- Interior layout :  
3 Room(s), 2 bedroom(s), living room, separate kitchen, dining room, dining area, tv room, veranda
- Sleeps - bed(s) :  
1 king-size bed(s), 1 super king-size bed(s), 1 sofa bed(s) 2 pers
- Guest facilities :  
T.V., t.v points, telephone, cupboard, Hanging wardrobe, safe deposit box, hair dryer, partly air conditioned, mobile cool air fan
- Appliances :  
Crockery/cutlery, kitchen utensils, cafetiere, electric kettle, toaster, gas cooker, refridgerator, washing machine, iron, ironing board

### Services

- Washing :  
Sheets (1 X / per week), Towels (1 X / per week), Linen (1 X / per week), Blanket(s) (1 X / per week), Quilt(s), Pillows (1 X / per week)
- House :  
Cleaning (1 X / per week), Cleaning on departure, Garden/swimming pool maintenance, Caretaker/concierge, Parking, Airport transfers supplement
- Personnel :  
Chauffeur supplement

### For your guidance

- For your guidance  
Children welcome  
No pet allowed  
Mobile telephone network coverage  
Water : hot/cold, water not drinkable  
Local voltage supply : 220-240V / 50Hz



Photo album - 1



bedroom



general floor plan



master bedroom



Photo album - 2



Photo album - 3



# Holiday lettings Mauritius Island - Flic en Flac "Les Camelias"

7  
[Book now](#)

## Route map



## Location & Access



GPS coordinates in degrees, minutes, seconds: Latitude 20° 17'7"S - Longitude 57°21'59"E ([Dwelling](#))

### Address

→ Ave Crecerelle  
No 2 Complexe Les Camelias

• [Airport Sir Seewoosagur Ramgoolam](#)

→ Plaisance, Mauritius Island, Mauritius  
→ Distance : 28mi.  
→ Time : 45'

• [Port Louis](#) : (15.5mi.)

## Contact

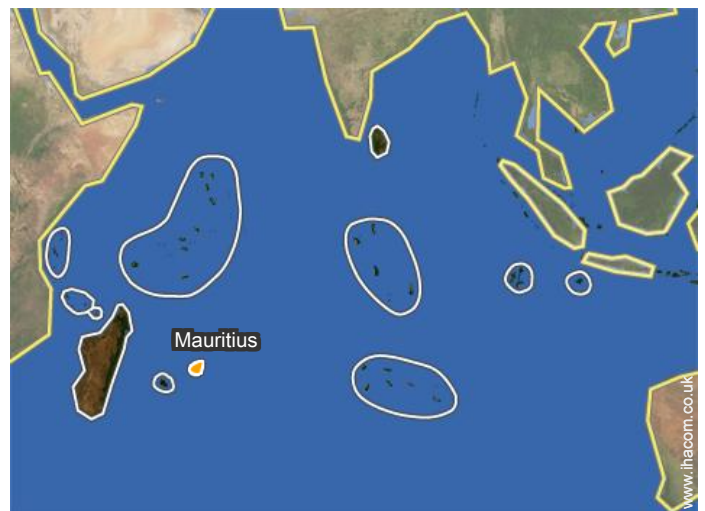
Spoken  
languages



Holiday lettings  
Mauritius Island - Mauritius  
"Les Camelias"

8  
[Book now](#)

Location





Holiday lettings  
Flic en Flac - Mauritius  
"Les Camelias"

9

[Book now](#)

Rental rates - Flat-Apartments - from 1 to 5 Person(s)

Rates	Night	Weekend	week	2 weeks	Month
 Low season	£34* > 3	-	£218*	-	£935*
 Mid season	£40* > 3	-	£218*	-	-
 High season	£45* > 7	-	£249*	-	-
 Promotional period	£31* > 7	-	-	-	-

> Minimum Night

[Book now](#)



bedroom



general floor plan

Booking conditions

• Reservation

- Payment made upon reservation : 25% of rental sum
- Payment balance : on handing over the keys

• rentals

- Service charges included
- Day tax included
- Cleaning charge on departure included

Accepted methods of payment

- Bank transfer (wire) • Cash

[▶ Book now](#)

[▶ Contact the owner](#)

Contact directly the property owners

[www.ihacom.co.uk](http://www.ihacom.co.uk)

Advert No.

65747

>> [Book now](#) <<

Contact

Spoken languages



\* Converted at the rate indicated : €100 = \$116.85 = £89

Advert No. 65747

[www.ihacom.co.uk](http://www.ihacom.co.uk)

