

Holiday lettings Flassans sur Issole "La pastourelle"



Villa, detached, 1 floor, separate entrance, in a(an) Property

Setting : quiet, tranquil

Capacity : 9 person(s)

Bedroom(s) : 4

Room(s) : 6



Meublés de Tourisme (5 stars)

Flassans sur Issole - Var (83) - Provence-Alpes-Côte d'Azur (French Riviera)
France

Reservation : +33 (0) 4 94 69 76 98 (France)

Advert No. 23848

www.ihacom.co.uk



>> HOLIDAY LETTINGS

BOOK DIRECT WITH THE OWNERS

Holiday lettings



Villa, detached, 1 floor, separate entrance, in a(an) Property

- **Ideal for all age groups**

- **View :** unobscured, not overlooked, country side, swimming pool, Vineyards, river
- **Setting :** quiet, tranquil
- **Exposure :** South

Assets

- **Swimming pool :**

Private swimming-pool, rectangular (length 33', width 16'), heated, steps in, child secure, outside shower

- **Parking :**

Parking uncovered : off road.

- **Advantages :**

Ping-pong table, ping-pong bats, pétanque pitch, pétanque set(s), 1 bike(s)

- **baby equipment :**

Baby chair



Surroundings & location



Countryside Golf Horse riding Fishing

Leisure

- **Leisure activities less than 20 km / 12 miles :**

Bathing, canoeing, riding school, pony club, pathway, coastal/forest paths, horse trekking, acrobatics, fishing

Surroundings

- **Locality :**

Sea/ocean 25mi.
Sandy beach 25mi.
18 hole golf course 3mi.
River <165'

- **Amenities :**

Village centre 0.93mi.
Breadshop 0.93mi.
Local shops 0.93mi.
Supermarket 6mi.
Post office 0.93mi.
Chemist 0.93mi.
Doctor 0.93mi.
Nurse 0.93mi.
Hospital 6mi.



Advert No. 23848

www.ihacom.co.uk





Interior

- **Receive up to :**
9 person(s) (6 adults, 3 children)
- **Liveable floor area :**
2,370 Sq.ft
- **Interior layout :**
6 Room(s), 4 bedroom(s), 1 bathroom, 2 shower room, 3 WC, living room 380 Sq.ft., sitting room 380 Sq.ft., separate kitchen, dining room, veranda
- **Sleeps - bed(s) :**
2 double bed(s), 1 king-size bed(s), 1 single bed(s), 2 bunk beds, 1 baby cot(s)
- **Guest facilities :**
Fireplace, T.V., board games, wifi, wardrobe, cupboard, Hanging wardrobe, hair dryer, partly air conditioned, central heating, Glazed in area, Rolling shutters, remote controlled gates
- **Appliances :**
Crockery/cutlery, kitchen utensils, electric coffee maker, electric kettle, toaster, food processor, electric hobs, oven, micro-wave oven, extractor hood, refridgerator, freezer, dish washer, washing machine, vacuum cleaner, iron, ironing board

Exterior

- **Ground surface :**
0.37 acre
- **Outside accommodation :**
Terrace 1,076 Sq.ft.
- **Outside setting :**
Private courtyard > 0.25 acre, enclosed grounds 0.37 acre, garden, lawn, wooded park, kitchen garden, ornamental lake, river
- **Outside amenities :**
Summer kitchen, summer living area, BBQ, garden table(s), 12 garden seat(s), trolley on wheels, arbour, garden seated area, 9 sun recliner(s), outside shower facilities, outside toilet facilities



Services

- **Washing :**
Sheets, Blanket(s), Quilt(s), Pillows
- **House :**
Cleaning on departure, Garden/swimming pool maintenance

For your guidance

- **For your guidance**
Children welcome
Pets accepted under certain conditions (ask the owner)
Mobile telephone network coverage
Water : hot/cold
Local voltage supply : 220-240V / 50Hz
Electricity supply : mains

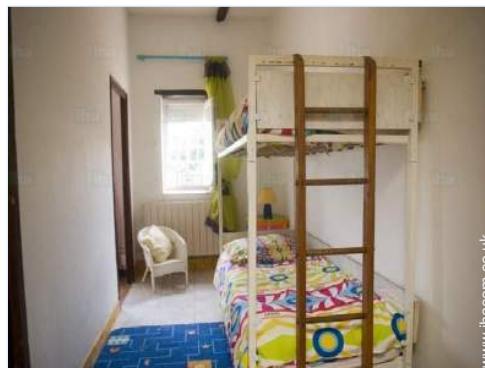


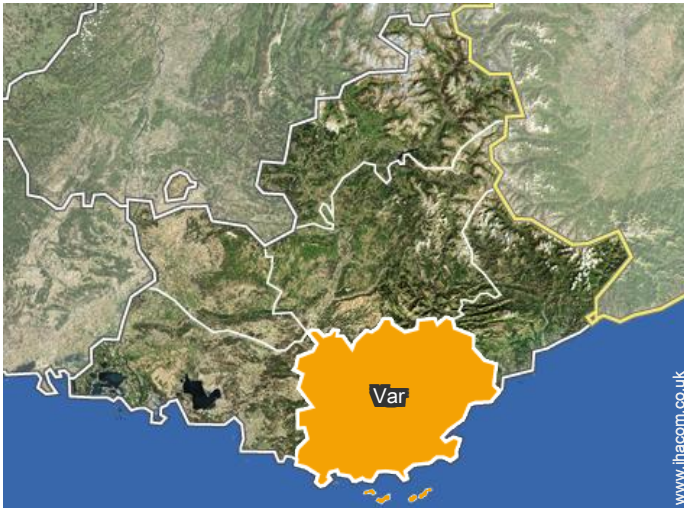
Photo album - 1



Photo album - 2



Location



Location & Access



GPS coordinates in degrees, minutes, seconds: Latitude 43°22'30"N - Longitude 6°12'38"E ([Dwelling](#))

Address

→ route de cabasse
83340 Flassans sur Issole

- Brignoles : (9mi.)

Contact

Spoken languages



Holiday lettings Flassans sur Issole - France "La pastourelle"

7
[Book now](#)

Availability calendar - from : march 2019

Mar	F	Sa	Su	M	Tu	W	Th	F	Sa	Su	M	Tu	W	Th	F	Sa	Su	M	Tu	W	Th	F	Sa	Su							
2019	1	2	3	4	5	6	7	8	9	10	11	12	13	14	15	16	17	18	19	20	21	22	23	24	25	26	27	28	29	30	31
																-	-	-	-	-	-	-	-	-	-	-	-	-	-	-	

Apr	M	Tu	W	Th	F	Sa	Su	M	Tu	W	Th	F	Sa	Su	M	Tu	W	Th	F	Sa	Su	M	Tu							
2019	1	2	3	4	5	6	7	8	9	10	11	12	13	14	15	16	17	18	19	20	21	22	23	24	25	26	27	28	29	30
	-	-	-	-	-	-	-	-	-	-	-	-	-	-	-	-	-	-	-	-	-	-	-	-	-	-	-	-	-	

May	W	Th	F	Sa	Su	M	Tu	W	Th	F	Sa	Su	M	Tu	W	Th	F	Sa	Su	M	Tu	W	Th	F							
2019	1	2	3	4	5	6	7	8	9	10	11	12	13	14	15	16	17	18	19	20	21	22	23	24	25	26	27	28	29	30	31
	-	-	-	-	-	-	-	-	-	-	-	-	-	-	-	-	-	-	-	-	-	-	-	-	-	-	-	-	-	-	

June	Sa	Su	M	Tu	W	Th	F	Sa	Su	M	Tu	W	Th	F	Sa	Su	M	Tu	W	Th	F	Sa	Su							
2019	1	2	3	4	5	6	7	8	9	10	11	12	13	14	15	16	17	18	19	20	21	22	23	24	25	26	27	28	29	30
	-	-	-	-	-	-	-	-	-	-	-	-	-	-	-	-	-	-	-	-	-	-	-	-	-	-	-	-	-	-

Jul	M	Tu	W	Th	F	Sa	Su	M	Tu	W	Th	F	Sa	Su	M	Tu	W	Th	F	Sa	Su	M	Tu	W							
2019	1	2	3	4	5	6	7	8	9	10	11	12	13	14	15	16	17	18	19	20	21	22	23	24	25	26	27	28	29	30	31
	-	-	-	-	-	-	-	-	-	-	-	-	-	-	-	-	-	-	-	-	-	-	-	-	-	-	-	-	-	-	

Aug	Th	F	Sa	Su	M	Tu	W	Th	F	Sa	Su	M	Tu	W	Th	F	Sa	Su	M	Tu	W	Th	F	Sa							
2019	1	2	3	4	5	6	7	8	9	10	11	12	13	14	15	16	17	18	19	20	21	22	23	24	25	26	27	28	29	30	31
	-	-	-	-	-	-	-	-	-	-	-	-	-	-	-	-	-	-	-	-	-	-	-	-	-	-	-	-	-	-	

Sep	Su	M	Tu	W	Th	F	Sa	Su	M	Tu	W	Th	F	Sa	Su	M	Tu	W	Th	F	Sa	Su	M							
2019	1	2	3	4	5	6	7	8	9	10	11	12	13	14	15	16	17	18	19	20	21	22	23	24	25	26	27	28	29	30
	-	-	-	-	-	-	-	-	-	-	-	-	-	-	-	-	-	-	-	-	-	-	-	-	-	-	-	-	-	-

Oct	Tu	W	Th	F	Sa	Su	M	Tu	W	Th	F	Sa	Su	M	Tu	W	Th	F	Sa	Su	M	Tu	W	Th							
2019	1	2	3	4	5	6	7	8	9	10	11	12	13	14	15	16	17	18	19	20	21	22	23	24	25	26	27	28	29	30	31
	-	-	-	-	-	-	-	-	-	-	-	-	-	-	-	-	-	-	-	-	-	-	-	-	-	-	-	-	-	-	

Nov	F	Sa	Su	M	Tu	W	Th	F	Sa	Su	M	Tu	W	Th	F	Sa	Su	M	Tu	W	Th	F	Sa							
2019	1	2	3	4	5	6	7	8	9	10	11	12	13	14	15	16	17	18	19	20	21	22	23	24	25	26	27	28	29	30
	-	-	-	-	-	-	-	-	-	-	-	-	-	-	-	-	-	-	-	-	-	-	-	-	-	-	-	-	-	-

Dec	Su	M	Tu	W	Th	F	Sa	Su	M	Tu	W	Th	F	Sa	Su	M	Tu	W	Th	F	Sa	Su	M	Tu							
2019	1	2	3	4	5	6	7	8	9	10	11	12	13	14	15	16	17	18	19	20	21	22	23	24	25	26	27	28	29	30	31
	-	-	-	-	-	-	-	-	-	-	-	-	-	-	-	-	-	-	-	-	-	-	-	-	-	-	-	-	-	-	



Holiday lettings

Var - Provence-Alpes-Côte d'Azur (French Riviera)

"La pastourelle"

8

[Book now](#)


Availability calendar - from : december 2019

Jan	W	Th	F	Sa	Su	M	Tu	W	Th	F	Sa	Su	M	Tu	W	Th	F	Sa	Su	M	Tu	W	Th	F							
2020	1	2	3	4	5	6	7	8	9	10	11	12	13	14	15	16	17	18	19	20	21	22	23	24	25	26	27	28	29	30	31
-	-	-	-	-	-	-	-	-	-	-	-	-	-	-	-	-	-	-	-	-	-	-	-	-	-	-	-	-	-	-	

Feb	Sa	Su	M	Tu	W	Th	F	Sa	Su	M	Tu	W	Th	F	Sa	Su	M	Tu	W	Th	F	Sa							
2020	1	2	3	4	5	6	7	8	9	10	11	12	13	14	15	16	17	18	19	20	21	22	23	24	25	26	27	28	29
-	-	-	-	-	-	-	-	-	-	-	-	-	-	-	-	-	-	-	-	-	-	-	-	-	-	-	-	-	-

[Month : Next >>](#)

Rental rates - Villa - 9 Person(s)

Rates	Night	Weekend	week	2 weeks	Month
 Low season	-	-	£490* (Sunday)	-	-
 High season	-	-	£1513* (Sunday)	-	-
(Check-in day)					

[Book now](#)

Booking conditions

• Reservation

- Payment made upon reservation : 30% of rental sum
- Payment balance : on handing over the keys
- Deposit required : £534*

• rentals

- Service charges included
- Day tax included
- Cleaning charge on departure included

[▶ Book now](#)[▶ Contact the owner](#)

Accepted methods of payment

- Bank transfer (wire)
- Cheque
- Cash

Contact directly the property owners

www.ihacom.co.uk

Advert No.

23848

[>> Book now <<](#)

Contact

Spoken languages



* Converted at the rate indicated : €100 = \$116.85 = £89

Advert No. 23848

www.ihacom.co.uk[>> HOLIDAY LETTINGS](#)

BOOK DIRECT WITH THE OWNERS