

# Holiday lettings Fiesch "Chalet Bircheyen"

Spend your holidays in our genuine chalet in the middle of the greens; however, only 3 minutes walk from the village centre with its shops and restaurants! Panoramic view on the surrounding mountains and the sunny villages.



**Flat-Apartments** 2nd floor, separate entrance, in a(an) Charming Wooden House 2 floors

Setting : pleasant, rustic

Capacity : from 2 to 4 person(s)

Bedroom(s) : 4

Room(s) : 5



Eco-tourisme ( )

Fiesch - Canton of Valais

Switzerland

Reservation : +41 (0) 27 9711541 (Switzerland)

Advert No. 4180

www.ihacom.co.uk



>> HOLIDAY LETTINGS

BOOK DIRECT WITH THE OWNERS

## Holiday lettings



Flat-Apartments 2nd floor, separate entrance, in a(an) Charming Wooden House 2 floors

- **Ideal for all age groups**
- **View** : panoramic, unobscured, not overlooked, mountain, river, nightlights
- **Setting** : pleasant, rustic
- **Exposure** : South

" Cozy, genuine Valais house in a sunny location and guaranteed without traffic, however the house is easily accessible both in winter and summer. You have either a 1 1/2 room apartment available or a 3 1/2 room apartment with all comfort. With us you are clearly on the sunny side. "

## Assets

- **Parking** :  
Parking uncovered : 2 internal.
- **baby equipment** :  
Baby chair, playpen



View from the property

## Surroundings & location



Mountain



Ski



Fishing



Culture

" Take advantage of the many possibilities of the beautiful Aletsch region with the longest glacier of Europe (UNESCO World Heritage area) for hiking, skiing, cross-country skiing, climbing, biking, paragliding, swimming, tennis, and much more! Or simply indulge doing nothing on the well-kept lawn. "

### Leisure

- **Leisure activities less than 20 km / 12 miles** :

Alpine skiing, cross-country skiing, off-piste skiing, ski-trekking, Télémart skiing, heliski, snowboarding, bathing, rafting, golf, tennis, squash, riding school, pathway, hiking, climbing, mountain bike (path), kite flying, parascending, hang-gliding, paragliding, horse trekking, mini-golf, go-karting, RC aeromodelling field, ten-pin bowling, hunting, safari photography, fishing, angling

- **Supervised** :

Ski school, child's ski area, tennis school

- **Attractions and relaxation** :

Bar/pub, restaurant, zoo/animal park, nature reserve, thermal baths, fitness centre

### Surroundings

- **Locality** :

Ski slopes 0.62mi.  
Ski lifts 0.62mi.  
Heated swimming pool 990'  
Public tennis court 990'  
9 hole golf course 6mi.  
River 330'  
Mountain range 0.3mi.  
Via ferrata-alpinism 0.62mi.

- **Amenities** :

Village centre 990'  
Bus stop / bus station 165'  
Ski bus pick up point <165'  
Bike/mountain bike hire 990'  
Ski hire shop 660'  
Breadshop 990'  
Local shops 990'  
Supermarket 990'  
High class retailers 0.3mi.  
Hairdressing salon 990'  
Post office 0.3mi.  
Bank 0.3mi.  
Cash point 0.3mi.  
Chemist 0.3mi.  
Doctor 990'  
Hospital 12.5mi.  
Dispensing clinic 6mi.



large bedroom



façade



interior

### Interior

- **Receive up to :**  
from 2 to 4 person(s)
- **Liveable floor area :**  
1,300 Sq.ft.
- **Interior layout :**  
5 Room(s), 4 bedroom(s), sleeping area, 1 bathroom, 1 WC, living room 323 Sq.ft., separate kitchen, dining area
- **Sleeps - bed(s) :**  
2 single bed(s), 1 baby cot(s)
- **Guest facilities :**  
T.V., t.v points, cable/satelite, wifi, wardrobe, Hanging wardrobe, central heating, Curtains, Double glazed
- **Appliances :**  
Crockery/cuttlery, kitchen utensils, electric coffee maker, electric kettle, electric cooker, oven, refridgerator, washing machine, clothes dryer, vacuum cleaner

### Exterior

- **Ground surface :**  
5,400 Sq.ft.
- **Outside accommodation :**  
Covered terrace
- **Outside setting :**  
Garden, lawn
- **Outside amenities :**  
BBQ, garden table(s), garden seat(s), parasol, sun recliner(s), child's swing, sand pit



Winter

### Services

- **Washing :**  
Sheets supplement (1 X / per week +£12\*), Linen, Blanket(s), Pillows
- **House :**  
Cleaning on departure supplement (+£41\*), Snow clearance, Parking

### For your guidance

- **For your guidance**  
Children welcome  
Pets accepted  
Mobile telephone network coverage  
Water : hot/cold  
Local voltage supply : 220-240V / 50Hz  
Electricity supply : mains
- **Handicapped people welcome**  
Fitted out for the disabled : visually impaired, hard of hearing, mentally



south-westerly view

Photo album - 1



View from the property



façade



large bedroom

Photo album - 2



interior



south-westerly view



Winter

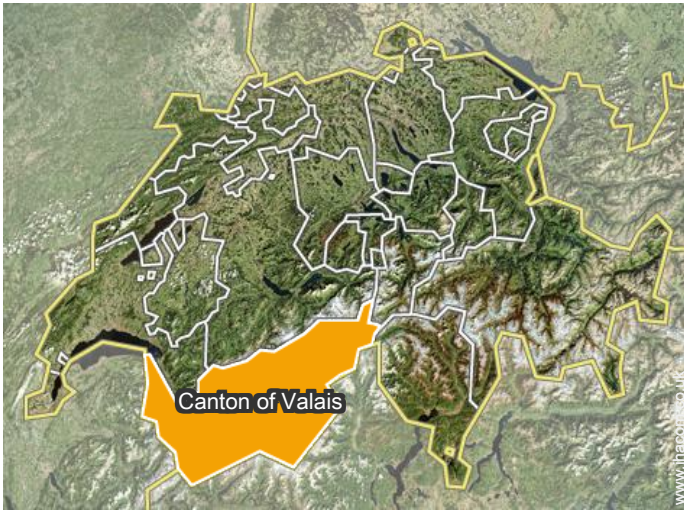


the property



the property

### Location



### Location & Access

" By car: From Brig drive direction Goms - Furka Grimsel. From Oberwald direction Brig till Fiesch. With the Matterhorn-Gotthard-Bahn to Fiesch. On request we pick you up at the train station. "



GPS coordinates in degrees, minutes, seconds: Latitude 46°23'55"N - Longitude 8° 7'58"E ([Dwelling](#))

#### Address

→ Chalet Bircheyen  
3984 Fiesch

#### • Motorway (junction) A3

→ Spiez, Canton of Berne, Switzerland  
→ Distance : 74,5mi.  
→ Time : 1h30'

#### • Motorway (junction) A1

→ Göschenen, Canton of Uri, Switzerland  
→ Distance : 50mi.  
→ Time : 1h

#### • Airport Genève

→ Geneva, Canton of Geneva, Switzerland

→ Distance : 124mi.  
→ Time : 2h

- Brig : (10,5mi.)
- Bettmeralp : (3mi.)
- Ernen : (1.25mi.)

### Contact

Spoken languages



# Holiday lettings Canton of Valais - Fiesch "Chalet Bircheyen"

## Availability calendar - from : november 2019

Nov	F	Sa	Su	M	Tu	W	Th	F	Sa	Su	M	Tu	W	Th	F	Sa	Su	M	Tu	W	Th	F	Sa							
2019	1	2	3	4	5	6	7	8	9	10	11	12	13	14	15	16	17	18	19	20	21	22	23	24	25	26	27	28	29	30
													-	-	-	-	-	-	-	-	-	-	-	-	-	-	-	-	-	

Dec	Su	M	Tu	W	Th	F	Sa	Su	M	Tu	W	Th	F	Sa	Su	M	Tu	W	Th	F	Sa	Su	M	Tu							
2019	1	2	3	4	5	6	7	8	9	10	11	12	13	14	15	16	17	18	19	20	21	22	23	24	25	26	27	28	29	30	31
	-	-	-	-	-	-	-	-	-	-	-	-	-	-	-	-	-	-	-	-	-	-	-	-	-	-	-	-	-	-	

Jan	W	Th	F	Sa	Su	M	Tu	W	Th	F	Sa	Su	M	Tu	W	Th	F	Sa	Su	M	Tu	W	Th	F							
2020	1	2	3	4	5	6	7	8	9	10	11	12	13	14	15	16	17	18	19	20	21	22	23	24	25	26	27	28	29	30	31
	-	-	-	-	-	-	-	-	-	-	-	-	-	-	-	-	-	-	-	-	-	-	-	-	-	-	-	-	-	-	

Feb	Sa	Su	M	Tu	W	Th	F	Sa	Su	M	Tu	W	Th	F	Sa	Su	M	Tu	W	Th	F	Sa							
2020	1	2	3	4	5	6	7	8	9	10	11	12	13	14	15	16	17	18	19	20	21	22	23	24	25	26	27	28	29
	-	-	-	-	-	-	-	-	-	-	-	-	-	-	-	-	-	-	-	-	-	-	-	-	-	-	-	-	-

Mar	Su	M	Tu	W	Th	F	Sa	Su	M	Tu	W	Th	F	Sa	Su	M	Tu	W	Th	F	Sa	Su	M	Tu							
2020	1	2	3	4	5	6	7	8	9	10	11	12	13	14	15	16	17	18	19	20	21	22	23	24	25	26	27	28	29	30	31
	-	-	-	-	-	-	-	-	-	-	-	-	-	-	-	-	-	-	-	-	-	-	-	-	-	-	-	-	-	-	

Apr	W	Th	F	Sa	Su	M	Tu	W	Th	F	Sa	Su	M	Tu	W	Th	F	Sa	Su	M	Tu	W	Th							
2020	1	2	3	4	5	6	7	8	9	10	11	12	13	14	15	16	17	18	19	20	21	22	23	24	25	26	27	28	29	30
	-	-	-	-	-	-	-	-	-	-	-	-	-	-	-	-	-	-	-	-	-	-	-	-	-	-	-	-	-	-

May	F	Sa	Su	M	Tu	W	Th	F	Sa	Su	M	Tu	W	Th	F	Sa	Su	M	Tu	W	Th	F	Sa	Su							
2020	1	2	3	4	5	6	7	8	9	10	11	12	13	14	15	16	17	18	19	20	21	22	23	24	25	26	27	28	29	30	31
	-	-	-	-	-	-	-	-	-	-	-	-	-	-	-	-	-	-	-	-	-	-	-	-	-	-	-	-	-	-	

June	M	Tu	W	Th	F	Sa	Su	M	Tu	W	Th	F	Sa	Su	M	Tu	W	Th	F	Sa	Su	M	Tu							
2020	1	2	3	4	5	6	7	8	9	10	11	12	13	14	15	16	17	18	19	20	21	22	23	24	25	26	27	28	29	30
	-	-	-	-	-	-	-	-	-	-	-	-	-	-	-	-	-	-	-	-	-	-	-	-	-	-	-	-	-	-

Jul	W	Th	F	Sa	Su	M	Tu	W	Th	F	Sa	Su	M	Tu	W	Th	F	Sa	Su	M	Tu	W	Th	F							
2020	1	2	3	4	5	6	7	8	9	10	11	12	13	14	15	16	17	18	19	20	21	22	23	24	25	26	27	28	29	30	31
	-	-	-	-	-	-	-	-	-	-	-	-	-	-	-	-	-	-	-	-	-	-	-	-	-	-	-	-	-	-	

Aug	Sa	Su	M	Tu	W	Th	F	Sa	Su	M	Tu	W	Th	F	Sa	Su	M	Tu	W	Th	F	Sa	Su	M							
2020	1	2	3	4	5	6	7	8	9	10	11	12	13	14	15	16	17	18	19	20	21	22	23	24	25	26	27	28	29	30	31
	-	-	-	-	-	-	-	-	-	-	-	-	-	-	-	-	-	-	-	-	-	-	-	-	-	-	-	-	-	-	



Holiday lettings  
Canton of Valais - Switzerland  
"Chalet Bircheyen"

8  
[Book now](#)

Availability calendar - from : august 2020





Sep	Tu	W	Th	F	Sa	Su	M	Tu	W	Th	F	Sa	Su	M	Tu	W	Th	F	Sa	Su	M	Tu	W	Th	F	Sa	Su	M	Tu	W	
2020	1	2	3	4	5	6	7	8	9	10	11	12	13	14	15	16	17	18	19	20	21	22	23	24	25	26	27	28	29	30	
-	-	-	-	-	-	-	-	-	-	-	-	-	-	-	-	-	-	-	-	-	-	-	-	-	-	-	-	-	-	-	-

Oct	Th	F	Sa	Su	M	Tu	W	Th	F	Sa	Su	M	Tu	W	Th	F	Sa	Su	M	Tu	W	Th	F	Sa	Su	M	Tu	W	Th	F	Sa
2020	1	2	3	4	5	6	7	8	9	10	11	12	13	14	15	16	17	18	19	20	21	22	23	24	25	26	27	28	29	30	31
-	-	-	-	-	-	-	-	-	-	-	-	-	-	-	-	-	-	-	-	-	-	-	-	-	-	-	-	-	-	-	-

[Month : Next >>](#)

Rental rates - Flat-Apartments - from 2 to 4 Person(s)

Rates	Night	Weekend	week	2 weeks	Month
 Low season	£64* > 5	£364* (Friday)	£446*	£892*	£46*
 Mid season	£64* > 5	£364*	£446*	£637*	-
 High season	£82* (Saturday) > 7	-	£573* (Saturday)	£1147* (Saturday)	-
 Festive specials	£50* > 3	-	£319*	-	-

(Check-in day) > Minimum Night

[Book now](#)

Booking conditions

- **Reservation**  
→ Payment made upon reservation : 30% of rental sum  
→ Payment balance : 3 weeks before the stay
- **rentals**  
→ Service charges included  
→ Day tax in addition  
→ Cleaning charge levy on departure : £64\*

[▶ Book now](#)

[▶ Contact the owner](#)

Accepted methods of payment

- Bank transfer (wire) • Cash

Contact directly the property owners

[www.ihacom.co.uk](http://www.ihacom.co.uk)  
Advert No.  
4180  
[>> Book now <<](#)

Contact

Spoken languages



\* Converted at the rate indicated : €100 = \$110 = £91

Advert No. 4180

[www.ihacom.co.uk](http://www.ihacom.co.uk)

