

Holiday lettings Fermo "CasAnnona"

TRADITION, NATURE, HOSPITALITY



House, detached, single storey, separate entrance, in a(an) Private property

Setting : suitable for a relaxing break, spiritual

Capacity : from 1 to 4 person(s)

Bedroom(s) : 2

Room(s) : 4



Qualité tourisme ()

Case & Appartamenti per vacanze (5 Suns)

Fermo - Province of Fermo (FM) - Marche

Italy

Advert No. 13936

www.ihacom.co.uk



>> HOLIDAY LETTINGS

BOOK DIRECT WITH THE OWNERS



Holiday lettings



House, detached, single storey, separate entrance, in a(an) Private property

- **Ideal for family, all age groups**
- **View :** panoramic, not overlooked, country side, swimming pool, garden/park, meadow
- **Setting :** suitable for a relaxing break, spiritual
- **Exposure :** South

" The hotel is found in an old farmhouse, is situated in the Centre of an area of 10,000 square meters fully facing South which allows you to enjoy the Sun from dawn to dusk all year round. It consists of several completely independent living units that can accommodate up to 10 people. Outside and adjacent to the House there is a parking, a large pergola overlooking the beautiful garden where you can spend time in relax and calm, a shady pine forest from which the sea and enjoy a cool breeze on a hot summer days. A few meters a futuristic Spa pool, set in a green oasis, secluded and private location, awaits you to relax and have fun. The play area for the little ones and the Arbor, where in summer the Lady Anne pantry its guests with delicacies of the local tradition, are the setting for a framework of peace and tranquility. Not far from the sea, by the beautiful still and just a short drive from the Sibillini mountains and other major cities in Marche don't lose the opportunity to enjoy a period dedicated to your wellbeing "

Assets

• Swimming pool :

Private swimming-pool, unusual (length 36', width 20'), sea water, heated, illuminated, submerged beach access, child secure, plunge pool, outside shower (open from '01 april' till '31 october')

• Parking :

Covered parking : 5 carport.

• Advantages :

Table football, ping-pong table, 4 ping-pong bats, 2 bike(s)

Surroundings & location



Countryside



Horse riding



Festival



Culture

" 10 minutes from the sea, 40 minutes from the mountain. Great as a starting point for the most important art cities of Marche, Umbria and Abruzzo "

Leisure

• Leisure activities less than 20 km / 12 miles :

Tennis, riding school, boat trips, go-karting

• Attractions and relaxation :

Bar/pub, discotheque, restaurant, cinema, open air summer cinema, park and garden, historical site, museum, theatre, summer theatre, cellar and wine tasting, racecourse, health farm

Surroundings

• Locality :

Heated swimming pool <165'

• Amenities :

Village centre 1.25mi.
Town centre 4.5mi.
Bus stop / bus station 660'
Bike/mountain bike hire 6mi.
Car rental 3mi.
Breadshop 1.25mi.
Local shops 2.5mi.
Supermarket 4.5mi.
High class retailers 9mi.
Hairdressing salon 3mi.
Post office 1.25mi.
Bank 3mi.
Chemist 1.25mi.
Doctor 1.25mi.
Hospital 3mi.
Dispensing clinic 3mi.



pinewood



garden



view from the garden/park

Interior

- **Receive up to :**
from 1 to 4 person(s) (2 adults, 2 children)
- **Liveable floor area :**
860 Sq.ft.
- **Interior layout :**
4 Room(s), 2 bedroom(s), 1 bathroom, 1 shower room, 1 WC, living room 270 Sq.ft., separate kitchen, dining room, tv room, laundry room, veranda
- **Sleeps - bed(s) :**
2 double bed(s)
- **Guest facilities :**
Fireplace, T.V., t.v points, wifi, wardrobe, hair dryer, fly screens, Blinds, Double glazed, remote controlled gates
- **Appliances :**
Crockery/cuttlery, kitchen utensils, cafetiere, electric kettle, toaster, gas cooker, oven, refridgerator, washing machine, clothes dryer, vacuum cleaner, iron, ironing board

Exterior

- **Ground surface :**
2.5 acres
- **Outside accommodation :**
Pergola 323 Sq.ft.
- **Outside setting :**
Garden 3,300 Sq.ft., pinewood 2,150 Sq.ft., olive grove 1.25 acre, kitchen garden 2,150 Sq.ft., wells/spring, fountain
- **Outside amenities :**
Summer kitchen, pizza oven, BBQ, garden table(s), arbour, parasol, outside shower facilities



Winter

Services

- **Washing :**
Sheets (1 X / per week), Towels (2 X / per week), Linen (1 X / per week), Blanket(s), Quilt(s), Pillows
- **House :**
Cleaning on departure, Garden/swimming pool maintenance, Caretaker/concierge, Parking, Airport transfers supplement (+£53*)
- **Personnel :**
Chef(s) supplement (+£45*), Chauffeur supplement (+£45*), Laundry, Massage supplement (+£36*), Guide supplement (+£40*)
- **Restauration :**
Breakfast supplement (+£4*), Locally produced meals supplement (1 X / per week +£45*)

For your guidance

- **For your guidance**
Children welcome
Pets accepted under certain conditions (ask the owner)
Present on site : pets, equine animals, farm animals
Non smoking rental, mobile telephone network coverage
Water : hot/cold
Local voltage supply : 110-120V / 60Hz
Electricity supply : mains
- **Handicapped people welcome**
Wheelchair access



pinewood

Photo album - 1



garden



pinewood



view from the garden/park

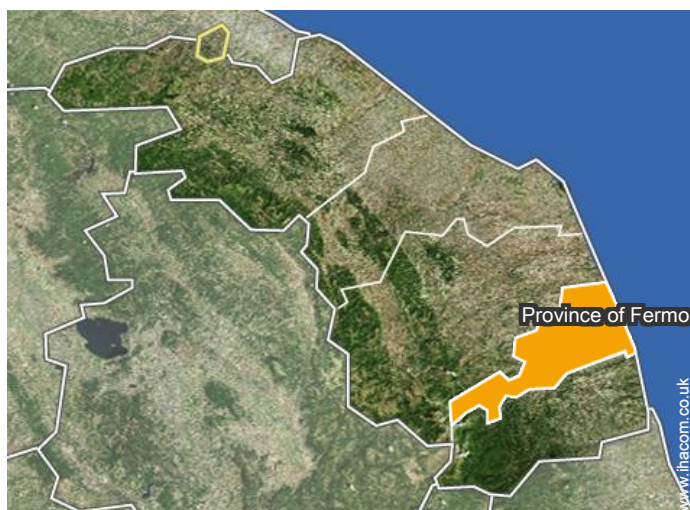


pinewood




Winter

Location



Location & Access

" 9 KM exit A14 CATCH PORTO SAN GIORGIO. Nearest airport Ancona to 50 minute drive. Nearest train station, stop Porto San Giorgio "

 GPS coordinates in degrees, minutes, seconds: Latitude 43°6'49"N - Longitude 13° 40'49"E (Dwelling)

Address

→ c.da San Biagio 22
63023 Fermo

→ Fermo, Province of Fermo, Marche, Italy
→ Distance : 4.5mi.
→ Time : 10'

• Airport Ancona Falconara

→ Ancona, Province of Ancona, Marche, Italy
→ Distance : 37,3mi.
→ Time : 45'

- Fermo : (3mi.)
- Ascoli Piceno : (25mi.)
- Ancona : (25mi.)

• Train station Porto San Giorgio Fermo

→ Porto San Giorgio, Province of Fermo, Marche, Italy
→ Distance : 6mi.
→ Time : 15'

• Motorway (junction) FERMO - PORTO SAN GIORGIO

Contact

Spoken languages



Holiday lettings Marche - Italy "CasAnnona"

[Book now](#)

Availability calendar - from : may 2019

May	W	Th	F	Sa	Su	M	Tu	W	Th	F	Sa	Su	M	Tu	W	Th	F	Sa	Su	M	Tu	W	Th	F							
2019	1	2	3	4	5	6	7	8	9	10	11	12	13	14	15	16	17	18	19	20	21	22	23	24	25	26	27	28	29	30	31
																					-	-	-	-	-	-	-	-	-	-	-

June	Sa	Su	M	Tu	W	Th	F	Sa	Su	M	Tu	W	Th	F	Sa	Su	M	Tu	W	Th	F	Sa	Su							
2019	1	2	3	4	5	6	7	8	9	10	11	12	13	14	15	16	17	18	19	20	21	22	23	24	25	26	27	28	29	30
	-	-	-	-	-	-	-	-	-	-	-	-	-	-	-	-	-	-	-	-	-	-	-	-	-	-	-	-	-	-

Jul	M	Tu	W	Th	F	Sa	Su	M	Tu	W	Th	F	Sa	Su	M	Tu	W	Th	F	Sa	Su	M	Tu	W	Th	F					
2019	1	2	3	4	5	6	7	8	9	10	11	12	13	14	15	16	17	18	19	20	21	22	23	24	25	26	27	28	29	30	31
	-	-	-	-	-	-	-	-	-	-	-	-	-	-	-	-	-	-	-	-	-	-	-	-	-	-	-	-	-	-	

Aug	Th	F	Sa	Su	M	Tu	W	Th	F	Sa	Su	M	Tu	W	Th	F	Sa	Su	M	Tu	W	Th	F	Sa							
2019	1	2	3	4	5	6	7	8	9	10	11	12	13	14	15	16	17	18	19	20	21	22	23	24	25	26	27	28	29	30	31
	-	-	-	-	-	-	-	-	-	-	-	-	-	-	-	-	-	-	-	-	-	-	-	-	-	-	-	-	-	-	

Sep	Su	M	Tu	W	Th	F	Sa	Su	M	Tu	W	Th	F	Sa	Su	M	Tu	W	Th	F	Sa	Su	M							
2019	1	2	3	4	5	6	7	8	9	10	11	12	13	14	15	16	17	18	19	20	21	22	23	24	25	26	27	28	29	30
	-	-	-	-	-	-	-	-	-	-	-	-	-	-	-	-	-	-	-	-	-	-	-	-	-	-	-	-	-	-

Oct	Tu	W	Th	F	Sa	Su	M	Tu	W	Th	F	Sa	Su	M	Tu	W	Th	F	Sa	Su	M	Tu	W	Th							
2019	1	2	3	4	5	6	7	8	9	10	11	12	13	14	15	16	17	18	19	20	21	22	23	24	25	26	27	28	29	30	31
	-	-	-	-	-	-	-	-	-	-	-	-	-	-	-	-	-	-	-	-	-	-	-	-	-	-	-	-	-	-	

Nov	F	Sa	Su	M	Tu	W	Th	F	Sa	Su	M	Tu	W	Th	F	Sa	Su	M	Tu	W	Th	F	Sa							
2019	1	2	3	4	5	6	7	8	9	10	11	12	13	14	15	16	17	18	19	20	21	22	23	24	25	26	27	28	29	30
	-	-	-	-	-	-	-	-	-	-	-	-	-	-	-	-	-	-	-	-	-	-	-	-	-	-	-	-	-	-

Dec	Su	M	Tu	W	Th	F	Sa	Su	M	Tu	W	Th	F	Sa	Su	M	Tu	W	Th	F	Sa	Su	M	Tu							
2019	1	2	3	4	5	6	7	8	9	10	11	12	13	14	15	16	17	18	19	20	21	22	23	24	25	26	27	28	29	30	31
	-	-	-	-	-	-	-	-	-	-	-	-	-	-	-	-	-	-	-	-	-	-	-	-	-	-	-	-	-	-	

Jan	W	Th	F	Sa	Su	M	Tu	W	Th	F	Sa	Su	M	Tu	W	Th	F	Sa	Su	M	Tu	W	Th	F							
2020	1	2	3	4	5	6	7	8	9	10	11	12	13	14	15	16	17	18	19	20	21	22	23	24	25	26	27	28	29	30	31
	-	-	-	-	-	-	-	-	-	-	-	-	-	-	-	-	-	-	-	-	-	-	-	-	-	-	-	-	-	-	

Feb	Sa	Su	M	Tu	W	Th	F	Sa	Su	M	Tu	W	Th	F	Sa	Su	M	Tu	W	Th	F	Sa							
2020	1	2	3	4	5	6	7	8	9	10	11	12	13	14	15	16	17	18	19	20	21	22	23	24	25	26	27	28	29
	-	-	-	-	-	-	-	-	-	-	-	-	-	-	-	-	-	-	-	-	-	-	-	-	-	-	-	-	-

Mid season
 High season
 Low season



Holiday lettings Fermo - Italy "CasAnnona"

7
[Book now](#)

Availability calendar - from : february 2020

Mar	Su	M	Tu	W	Th	F	Sa	Su	M	Tu	W	Th	F	Sa	Su	M	Tu	W	Th	F	Sa	Su	M	Tu							
2020	1	2	3	4	5	6	7	8	9	10	11	12	13	14	15	16	17	18	19	20	21	22	23	24	25	26	27	28	29	30	31
	-	-	-	-	-	-	-	-	-	-	-	-	-	-	-	-	-	-	-	-	-	-	-	-	-	-	-	-	-	-	

Apr	W	Th	F	Sa	Su	M	Tu	W	Th	F	Sa	Su	M	Tu	W	Th	F	Sa	Su	M	Tu	W	Th							
2020	1	2	3	4	5	6	7	8	9	10	11	12	13	14	15	16	17	18	19	20	21	22	23	24	25	26	27	28	29	30
	-	-	-	-	-	-	-	-	-	-	-	-	-	-	-	-	-	-	-	-	-	-	-	-	-	-	-	-	-	

■ Mid season
 ■ High season
 ■ Low season

[Month : Next >>](#)

Rental rates - House - from 1 to 4 Person(s)

Rates	Night	Weekend	week	2 weeks	Month
■ Low season	£53* > 2	£71* (Friday)	£249*	£445*	£668*
■ Mid season	£107* ↓ > 2	£125* (Friday)	£374* (Saturday)	£748* (Saturday)	£1424*
■ High season	£142* > 2	£160* (Friday)	£748* (Saturday)	£1424* (Saturday)	£2670*

[↓ Reducing rates](#)
(Check-in day)
> Minimum Night

[Book now](#)

Booking conditions

• Reservation

- Payment made upon reservation : 30% of rental sum
- Payment balance : 1 month before the stay
- Deposit required : £267*

• rentals

- Day tax in addition
- Cleaning charge on departure included
- Anticipated supplement for : - firewood

Accepted methods of payment

- Visa/Delta/Electron
- Bank transfer (wire)
- MasterCard/EuroCard
- American Express
- PayPal

[▶ Book now](#)

[▶ Contact the owner](#)

Contact directly the property owners

www.ihacom.co.uk

Advert No.

13936

[>> Book now <<](#)

Contact

Spoken languages



* Converted at the rate indicated : €100 = \$116.85 = £89

Advert No. 13936

www.ihacom.co.uk

