

Holiday lettings Faa'a "Te Rai Ninamu"

Studio located on the heights of Faa'a, minutes from the airport and the city of Papeete



Studio Flat 1st floor, shared entrance,
in a(an) Estate 1 floor

Setting : pleasant, peaceful

Capacity : from 2 to 4 person(s)
Room(s) : 1

Faa'a - Tahiti - Windward Islands - Society Islands
French Polynesia

Advert No. 76454

www.ihacom.co.uk



>> HOLIDAY LETTINGS

BOOK DIRECT WITH THE OWNERS

Holiday lettings



Studio Flat 1st floor, shared entrance, in a (an) Estate 1 floor

- **Ideal for all age groups, couples**
- **View :** unobscured, dominant, sea/ocean, mountain, rooftop, fantastic sunset
- **Setting :** pleasant, peaceful
- **Exposure :** South

" For a moment of relaxation, a weekend, for a vacation, or a night off between 2 flights on a business trip... it is the places that it you fautStudio ideally located on the heights of Faaa, where you can, from inside of the housing, the terrace or the pool, enjoy the magnificent sunset on the sister island MooreaA 1.5 kms from the airport and 6 km from Papeete. Close to all amenities: supermarkets, bakery, gas Station, medical Centre, pharmacy, various restore points... A car is essential to get there apartment air-conditioned, bright, airy and pleasant, 47 m2, including terrace, in a gated (2 automatic gates) covered private Parking on the same level as the Studioideal to people1 2 bed Queen bed (160 x 200) pets are not allowed. It is strictly forbidden to smoke inside the studio, however, you can do it on the terrace. Building and very quiet. This residence does not lend itself to organize festive events or / and noisy. Check-in is at 3 pm and check out at 11: 00. "

Assets

- **Swimming pool :**
Shared swimming pool, rectangular, steps in, outside shower (open from '01 january' till '01 january')
- **Parking :**
Covered parking : 1 closed individual place (s), 1 carport.

Surroundings & location



City



Festival



Culture

" 1.5 kms from the airport and 6 km from Papeete. Close to all amenities: supermarket, bakery, gas Station (open from 4: 00 to midnight), medical Centre, pharmacy, various restore points "

Leisure

- **Leisure activities less than 20 km / 12 miles :**

Bathing, snorkelling, scuba diving, banana boat, water skiing, jet ski, surfing, tennis, riding school, pony club, pathway, coastal/ forest paths, hiking, parascending, parachuting, hang-gliding, paragliding, Microlights, boat trips, horse trekking, skate board (ramps), basketball, volleyball, safari, safari photography, fishing, deep-sea angling, angling, spear fishing, pétanque pitch

- **Supervised :**

Riding school

- **Attractions and relaxation :**

Bar/pub, discotheque, restaurant, cinema, park and garden, exhibition centre, art gallery, historical site, museum, theatre, festivals, local craftshop, racecourse, thalassotherapy centre, sauna, steam baths, health farm, beauticians, fitness centre

Surroundings

- **Locality :**

Sea/ocean 9mi.
Sandy beach 9mi.
Shingle beach 18.5mi.
Rocky beach 25mi.
Public tennis court 3mi.
18 hole golf course 18.5mi.
Flying clubs 1.85mi.
Windsurfing spots 25mi.
Surfing spots 18.5mi.
Watersports centre 6mi.
Waterfall 9mi.
Cliff 25mi.
River 18.5mi.
Marina 6mi.
Jetski slipway 9mi.

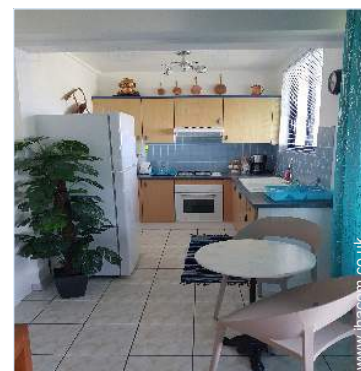
- **Amenities :**

Nursery 1.85mi.
Town centre 4.5mi.
Bus stop / bus station 1.25mi.
Scooter/motorbike hire 1.5mi.
Car rental 1.5mi.
Breadshop 1.5mi.
Local shops 1.5mi.
Supermarket 3mi.
High class retailers 4.5mi.
Hairdressing salon 1.5mi.
Post office 2.5mi.
Bank 1.85mi.
Cash point 1.5mi.

Chemist 1.5mi.
Doctor 1.5mi.
Nurse 3mi.
Hospital 6mi.
Dispensing clinic 3mi.



view from the terrace



kitchen



WC

Interior

- **Receive up to :**
from 2 to 4 person(s) (2 adults, 2 children)
- **Liveable floor area :**
485 Sq.ft.
- **Interior layout :**
1 Room(s), 1 shower room, 1 WC, living room 380 Sq.ft., Kitchen Area, dining area, tv room, dressing room, veranda
- **Sleeps - bed(s) :**
1 super king-size bed(s), 1 possible extra bed (s)
- **Guest facilities :**
T.V., internet access, wifi, wardrobe, cupboard, Hanging wardrobe, safe deposit box, hair dryer, fully air conditioned, ceiling paddle fan, Glazed in area, Curtains, Blinds, Double glazed, remote controlled gates, digipad entry gates
- **Appliances :**
Crockery/cuttlery, kitchen utensils, electric coffee maker, electric kettle, juicer, gas cooker, oven, micro-wave oven, extractor hood, refridgerator, freezer, washing machine, vacuum cleaner, iron, ironing board

Exterior

- **Outside accommodation :**
Terrace 120 Sq.ft., covered terrace 120 Sq.ft.
- **Outside amenities :**
Garden seated area



view from the living room

Services

- **Washing :**
Sheets, Towels, Linen, Blanket(s), Pillows
- **House :**
Cleaning on departure supplement (+£55*), Parking, Airport transfers supplement (+£27*)

For your guidance

- **For your guidance**
Children welcome
No pet allowed
Non smoking rental, mobile telephone network coverage, personal transport advisable, alcohol not permitted
Water : hot/cold
Local voltage supply : 110-120V / 60Hz
Electricity supply : mains



shower room

Photo album - 1



kitchen



view from the terrace



WC

Photo album - 2



shower room



view from the living room



sleeping nook

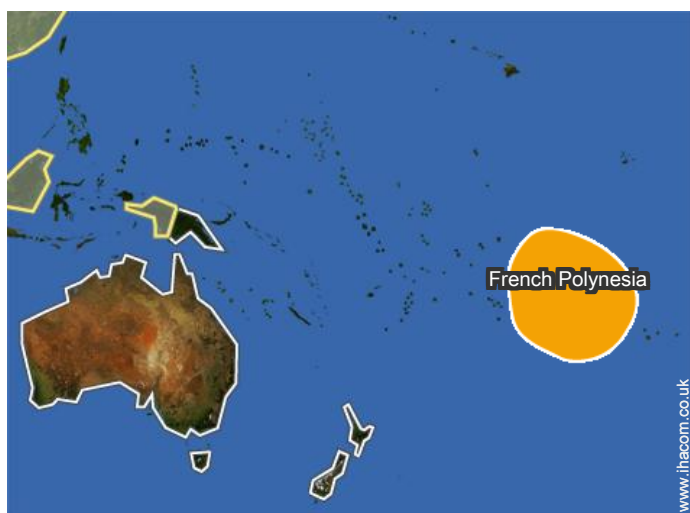


shared swimming pool




view from the swimming pool

Location



Location & Access

" Located in Faa', and access by road to Pi'afau at the bottom of the servitude, 2nd building "

 GPS coordinates in degrees, minutes, seconds: Latitude 17°34'5"S - Longitude 149°36'34"W (Dwelling)

Address

→ BP 61106
Te Rai Ninamu
98704 Faa'a

→ Faa'a, Tahiti, Windward Islands - Society Islands, French Polynesia
→ Distance : 1.5mi.
→ Time : 5'

• Airport Tahiti Faa'a

→ Papeete, Tahiti, Windward Islands - Society Islands, French Polynesia
→ Distance : 1.5mi.
→ Time : 5'

- Faa'a : (1.5mi.)
- Papeete : (4.5mi.)
- Punaauia : (6mi.)

• Sea port Papeete

→ Papeete, Tahiti, Windward Islands - Society Islands, French Polynesia
→ Distance : 7mi.
→ Time : 20'

• Coach station Faa'a

Contact

Spoken languages



Holiday lettings Faa'a - French Polynesia "Te Rai Ninamu"

7
[Book now](#)

Availability calendar - from : november 2019

Nov	F	Sa	Su	M	Tu	W	Th	F	Sa	Su	M	Tu	W	Th	F	Sa	Su	M	Tu	W	Th	F	Sa							
2019	1	2	3	4	5	6	7	8	9	10	11	12	13	14	15	16	17	18	19	20	21	22	23	24	25	26	27	28	29	30

Dec	Su	M	Tu	W	Th	F	Sa	Su	M	Tu	W	Th	F	Sa	Su	M	Tu	W	Th	F	Sa	Su	M	Tu							
2019	1	2	3	4	5	6	7	8	9	10	11	12	13	14	15	16	17	18	19	20	21	22	23	24	25	26	27	28	29	30	31
	-	-	-	-	-	-	-	-	-	-	-	-	-	-	-	-	-	-	-	-	-	-	-	-	-	-	-	-	-	-	

Jan	W	Th	F	Sa	Su	M	Tu	W	Th	F	Sa	Su	M	Tu	W	Th	F	Sa	Su	M	Tu	W	Th	F							
2020	1	2	3	4	5	6	7	8	9	10	11	12	13	14	15	16	17	18	19	20	21	22	23	24	25	26	27	28	29	30	31
	-	-	-	-	-	-	-	-	-	-	-	-	-	-	-	-	-	-	-	-	-	-	-	-	-	-	-	-	-	-	

Feb	Sa	Su	M	Tu	W	Th	F	Sa	Su	M	Tu	W	Th	F	Sa	Su	M	Tu	W	Th	F	Sa							
2020	1	2	3	4	5	6	7	8	9	10	11	12	13	14	15	16	17	18	19	20	21	22	23	24	25	26	27	28	29
	-	-	-	-	-	-	-	-	-	-	-	-	-	-	-	-	-	-	-	-	-	-	-	-	-	-	-	-	-

Mar	Su	M	Tu	W	Th	F	Sa	Su	M	Tu	W	Th	F	Sa	Su	M	Tu	W	Th	F	Sa	Su	M	Tu							
2020	1	2	3	4	5	6	7	8	9	10	11	12	13	14	15	16	17	18	19	20	21	22	23	24	25	26	27	28	29	30	31
	-	-	-	-	-	-	-	-	-	-	-	-	-	-	-	-	-	-	-	-	-	-	-	-	-	-	-	-	-	-	

Apr	W	Th	F	Sa	Su	M	Tu	W	Th	F	Sa	Su	M	Tu	W	Th	F	Sa	Su	M	Tu	W	Th							
2020	1	2	3	4	5	6	7	8	9	10	11	12	13	14	15	16	17	18	19	20	21	22	23	24	25	26	27	28	29	30
	-	-	-	-	-	-	-	-	-	-	-	-	-	-	-	-	-	-	-	-	-	-	-	-	-	-	-	-	-	-

May	F	Sa	Su	M	Tu	W	Th	F	Sa	Su	M	Tu	W	Th	F	Sa	Su	M	Tu	W	Th	F	Sa	Su							
2020	1	2	3	4	5	6	7	8	9	10	11	12	13	14	15	16	17	18	19	20	21	22	23	24	25	26	27	28	29	30	31
	-	-	-	-	-	-	-	-	-	-	-	-	-	-	-	-	-	-	-	-	-	-	-	-	-	-	-	-	-	-	

June	M	Tu	W	Th	F	Sa	Su	M	Tu	W	Th	F	Sa	Su	M	Tu	W	Th	F	Sa	Su	M	Tu							
2020	1	2	3	4	5	6	7	8	9	10	11	12	13	14	15	16	17	18	19	20	21	22	23	24	25	26	27	28	29	30
	-	-	-	-	-	-	-	-	-	-	-	-	-	-	-	-	-	-	-	-	-	-	-	-	-	-	-	-	-	-

Jul	W	Th	F	Sa	Su	M	Tu	W	Th	F	Sa	Su	M	Tu	W	Th	F	Sa	Su	M	Tu	W	Th	F							
2020	1	2	3	4	5	6	7	8	9	10	11	12	13	14	15	16	17	18	19	20	21	22	23	24	25	26	27	28	29	30	31
	-	-	-	-	-	-	-	-	-	-	-	-	-	-	-	-	-	-	-	-	-	-	-	-	-	-	-	-	-	-	

Aug	Sa	Su	M	Tu	W	Th	F	Sa	Su	M	Tu	W	Th	F	Sa	Su	M	Tu	W	Th	F	Sa	Su	M							
2020	1	2	3	4	5	6	7	8	9	10	11	12	13	14	15	16	17	18	19	20	21	22	23	24	25	26	27	28	29	30	31
	-	-	-	-	-	-	-	-	-	-	-	-	-	-	-	-	-	-	-	-	-	-	-	-	-	-	-	-	-	-	

 Reserved

Holiday lettings Tahiti - Windward Islands - Society Islands "Te Rai Ninamu"

8
[Book now](#)

Availability calendar - from : august 2020




Sep	Tu	W	Th	F	Sa	Su	M	Tu	W	Th	F	Sa	Su	M	Tu	W	Th	F	Sa	Su	M	Tu	W							
2020	1	2	3	4	5	6	7	8	9	10	11	12	13	14	15	16	17	18	19	20	21	22	23	24	25	26	27	28	29	30
-	-	-	-	-	-	-	-	-	-	-	-	-	-	-	-	-	-	-	-	-	-	-	-	-	-	-	-	-	-	

Oct	Th	F	Sa	Su	M	Tu	W	Th	F	Sa	Su	M	Tu	W	Th	F	Sa	Su	M	Tu	W	Th	F	Sa							
2020	1	2	3	4	5	6	7	8	9	10	11	12	13	14	15	16	17	18	19	20	21	22	23	24	25	26	27	28	29	30	31
-	-	-	-	-	-	-	-	-	-	-	-	-	-	-	-	-	-	-	-	-	-	-	-	-	-	-	-	-	-	-	

 Reserved

[Month : Next >>](#)

Rental rates - Studio Flat - from 2 to 4 Person(s)

Rates	Night	Weekend	week	2 weeks	Month
 Low season	£68* ↓ > 2	-	£455*	£751*	£1001*
 Mid season	£77* ↓ > 2	-	£501*	£819*	£1183*
 High season	£77* ↓ > 2	-	£501*	£819*	£1183*

↓ Reducing rates > Minimum Night

[Book now](#)

Booking conditions

• Reservation

- Payment made upon reservation : 25% of rental sum
- Payment balance : on handing over the keys
- Deposit required : £91*

• rentals

- Service charges to be added
- Day tax included
- Cleaning charge levy on departure : £27*

[▶ Book now](#)

[▶ Contact the owner](#)

Accepted methods of payment

- Bank transfer (wire) • PayPal • Cash

Contact directly the property owners

www.ihacom.co.uk

Advert No.

76454

[>> Book now <<](#)

Contact

Spoken languages



* Converted at the rate indicated : €100 = \$110 = £91

Advert No. 76454

www.ihacom.co.uk



[>> HOLIDAY LETTINGS](#)

BOOK DIRECT WITH THE OWNERS