

# Holiday lettings Durbuy "Het Goudklompje"



**Bungalow**, detached, 1 floor, separate entrance, in a(an) Park

Setting : suitable for a relaxing break, sporty

Capacity : from 1 to 5 person(s)

Bedroom(s) : 2

Room(s) : 2



Meublés de Tourisme (5 stars)

Durbuy - Province of Luxembourg - Walloon  
Belgium

Reservation : +31 (0) 6 45 92 93 49 (Netherlands)

Advert No. 54962

www.ihacom.co.uk



## Holiday lettings



Bungalow, detached, 1 floor, separate entrance, in a(an) Park

- **Ideal for all age groups**

- **View :** panoramic, not overlooked, dominant, mountain, forest, fantastic sunset

- **Setting :** suitable for a relaxing break, sporty

- **Exposure :** South

## Assets

- **Swimming pool :**

Shared swimming pool, unusual (length 65', width 26'), heated, covered, illuminated, step ladder, child secure, water slide (open from '01 january' till '31 december')

- **Tennis :**

Shared tennis, Surface clay

- **Parking :**

Parking uncovered : 2 off road.

- **Advantages :**

Billiard table, table football, pinball, darts, ping-pong table, basket ball net, pétanque pitch, bike(s)

- **baby equipment :**

Baby chair, baby bath, baby potty, playpen

## Surroundings & location



Mountain



Golf



Horse riding



Fishing



Culture

### Leisure

- **Leisure activities less than 20 km / 12 miles :**

Cross-country skiing, ice-skating, bathing, pedalo, canoeing, canyoning, rafting, golf, tennis, squash, riding school, pathway, hiking, climbing, rock climbing, mountain bike (path), mini-golf, ATV/Quad Bike, go-karting, ten-pin bowling, basketball, volleyball, hunting, big game hunting, fishing, angling, pétanque pitch

- **Attractions and relaxation :**

Bar/pub, discotheque, restaurant, cinema, park and garden, leisure park, zoo/animal park, nature reserve, art gallery, historical site, festivals, antiques & bric-a-brac

### Surroundings

- **Locality :**

Ski slopes  
Ice skating rink 1.85mi.  
Heated swimming pool  
Public swimming pool  
Public tennis court  
18 hole golf course 1.85mi.  
Flying clubs 25mi.  
River rapids 0.62mi.  
Waterfall 12.5mi.  
River 0.3mi.  
Forest <165'  
Via ferrata-alpinism 0.62mi.

- **Amenities :**

Village centre 1.85mi.  
Town centre 1.85mi.  
Bus stop / bus station 0.3mi.  
Bike/mountain bike hire 330'  
Scooter/motorbike hire 1.85mi.  
Household linens for hire/laundry services  
Breadshop 0.3mi.  
Caterer 1.85mi.  
Local shops 1.85mi.  
Supermarket 1.85mi.  
High class retailers 1.5mi.  
Hairdressing salon 1.85mi.  
Post office 1.85mi.  
Bank 1.85mi.  
Cash point 1.85mi.  
Chemist 1.85mi.  
Doctor 1.85mi.  
Hospital 12.5mi.

### Interior

- **Receive up to :**  
from 1 to 5 person(s) (4 adults, 1 children)
- **Liveable floor area :**  
860 Sq.ft.
- **Interior layout :**  
2 Room(s), 2 bedroom(s), sleeping area, 1 shower room, 1 WC, living room 270 Sq.ft., sitting room 140 Sq.ft., Kitchen Area, dining room, dining area
- **Sleeps - bed(s) :**  
1 double bed(s), 2 single bed(s), 1 bunk beds
- **Guest facilities :**  
T.V., DVD player, board games, book collection, film collection, t.v points, wifi, wardrobe, cupboard, Hanging wardrobe, fly screens, mobile cool air fan, central heating, Curtains, Double glazed, fire alarm
- **Appliances :**  
Crockery/cuttlery, kitchen utensils, cafetiére, electric coffee maker, electric kettle, juicer, electric hobs, oven, micro-wave oven, extractor hood, refridgerator, vacuum cleaner, iron, ironing board

### Exterior

- **Ground surface :**  
6,500 Sq.ft.
- **Outside accommodation :**  
Balcony 194 Sq.ft.
- **Outside setting :**  
Tropical garden, woods, river
- **Outside amenities :**  
Garden table(s), 6 garden seat(s), parasol, child's swing, climbing frame, sand pit

### Services

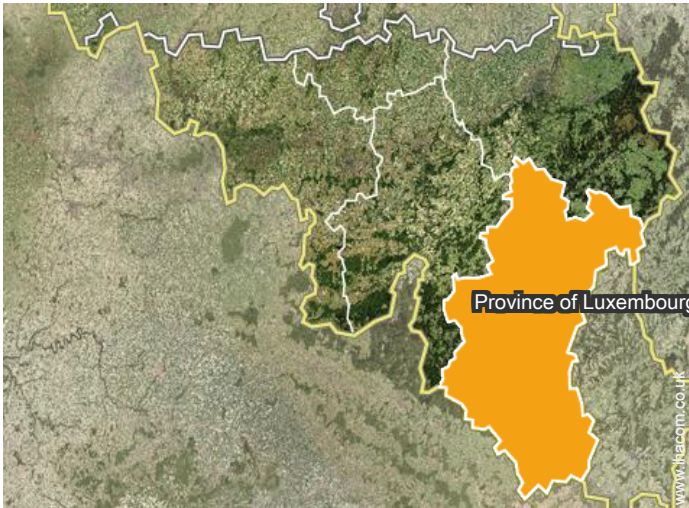
- **Washing :**  
Sheets supplement (+£6\*), Towels supplement (+£4\*), Linen supplement (+£3\*), Quilt(s), Pillows
- **House :**  
Cleaning on departure supplement (+£34\*), Garden/swimming pool maintenance, Snow clearance, Caretaker/concierge, Parking
- **Personnel :**  
Entertainer supplement
- **Restauration :**  
Breakfast supplement (+£4\*), BBQ meal supplement, Locally produced meals supplement, Picnic basket supplement

### For your guidance

- **For your guidance**  
Children welcome  
Pets accepted under certain conditions (ask the owner)  
Mobile telephone network coverage  
Water : hot/cold  
Local voltage supply : 220-240V / 50Hz  
Electricity supply : mains
- **Handicapped people welcome**  
Fitted out for the disabled : visually impaired, hard of hearing



### Location



### Location & Access



GPS coordinates in degrees, minutes, seconds: Latitude 50°20'35"N - Longitude 5°25'1"E ([Dwelling](#))

#### Address

→ Rue d'Andenne 20  
6940 Durbuy

• **Motorway (junction) A26**

→ Werbomont, Province of Liège, Walloon,  
Belgium

→ Distance : 12.5mi.

• Barvaux-sur-Ourthe : (2.5mi.)

### Contact

Spoken  
languages



# Holiday lettings Province of Luxembourg - Durbuy "Het Goudklompje"

## Availability calendar - from : october 2017

Oct	Su	M	Tu	W	Th	F	Sa	Su	M	Tu	W	Th	F	Sa	Su	M	Tu	W	Th	F	Sa	Su	M	Tu							
2017	1	2	3	4	5	6	7	8	9	10	11	12	13	14	15	16	17	18	19	20	21	22	23	24	25	26	27	28	29	30	31

Nov	W	Th	F	Sa	Su	M	Tu	W	Th	F	Sa	Su	M	Tu	W	Th	F	Sa	Su	M	Tu	W	Th							
2017	1	2	3	4	5	6	7	8	9	10	11	12	13	14	15	16	17	18	19	20	21	22	23	24	25	26	27	28	29	30
	-	-	-	-	-	-	-	-	-	-	-	-	-	-	-	-	-	-	-	-	-	-	-	-	-	-	-	-	-	-

Dec	F	Sa	Su	M	Tu	W	Th	F	Sa	Su	M	Tu	W	Th	F	Sa	Su	M	Tu	W	Th	F	Sa	Su							
2017	1	2	3	4	5	6	7	8	9	10	11	12	13	14	15	16	17	18	19	20	21	22	23	24	25	26	27	28	29	30	31
	-	-	-	-	-	-	-	-	-	-	-	-	-	-	-	-	-	-	-	-	-	-	-	-	-	-	-	-	-	-	

Jan	M	Tu	W	Th	F	Sa	Su	M	Tu	W	Th	F	Sa	Su	M	Tu	W	Th	F	Sa	Su	M	Tu	W							
2018	1	2	3	4	5	6	7	8	9	10	11	12	13	14	15	16	17	18	19	20	21	22	23	24	25	26	27	28	29	30	31
	-	-	-	-	-	-	-	-	-	-	-	-	-	-	-	-	-	-	-	-	-	-	-	-	-	-	-	-	-	-	

Feb	Th	F	Sa	Su	M	Tu	W	Th	F	Sa	Su	M	Tu	W	Th	F	Sa	Su	M	Tu	W							
2018	1	2	3	4	5	6	7	8	9	10	11	12	13	14	15	16	17	18	19	20	21	22	23	24	25	26	27	28
	-	-	-	-	-	-	-	-	-	-	-	-	-	-	-	-	-	-	-	-	-	-	-	-	-	-	-	-

Mar	Th	F	Sa	Su	M	Tu	W	Th	F	Sa	Su	M	Tu	W	Th	F	Sa	Su	M	Tu	W	Th	F	Sa							
2018	1	2	3	4	5	6	7	8	9	10	11	12	13	14	15	16	17	18	19	20	21	22	23	24	25	26	27	28	29	30	31
	-	-	-	-	-	-	-	-	-	-	-	-	-	-	-	-	-	-	-	-	-	-	-	-	-	-	-	-	-	-	

Apr	Su	M	Tu	W	Th	F	Sa	Su	M	Tu	W	Th	F	Sa	Su	M	Tu	W	Th	F	Sa	Su	M							
2018	1	2	3	4	5	6	7	8	9	10	11	12	13	14	15	16	17	18	19	20	21	22	23	24	25	26	27	28	29	30
	-	-	-	-	-	-	-	-	-	-	-	-	-	-	-	-	-	-	-	-	-	-	-	-	-	-	-	-	-	-

May	Tu	W	Th	F	Sa	Su	M	Tu	W	Th	F	Sa	Su	M	Tu	W	Th	F	Sa	Su	M	Tu	W	Th							
2018	1	2	3	4	5	6	7	8	9	10	11	12	13	14	15	16	17	18	19	20	21	22	23	24	25	26	27	28	29	30	31
	-	-	-	-	-	-	-	-	-	-	-	-	-	-	-	-	-	-	-	-	-	-	-	-	-	-	-	-	-	-	

June	F	Sa	Su	M	Tu	W	Th	F	Sa	Su	M	Tu	W	Th	F	Sa	Su	M	Tu	W	Th	F	Sa							
2018	1	2	3	4	5	6	7	8	9	10	11	12	13	14	15	16	17	18	19	20	21	22	23	24	25	26	27	28	29	30
	-	-	-	-	-	-	-	-	-	-	-	-	-	-	-	-	-	-	-	-	-	-	-	-	-	-	-	-	-	-

Jul	Su	M	Tu	W	Th	F	Sa	Su	M	Tu	W	Th	F	Sa	Su	M	Tu	W	Th	F	Sa	Su	M	Tu							
2018	1	2	3	4	5	6	7	8	9	10	11	12	13	14	15	16	17	18	19	20	21	22	23	24	25	26	27	28	29	30	31
	-	-	-	-	-	-	-	-	-	-	-	-	-	-	-	-	-	-	-	-	-	-	-	-	-	-	-	-	-	-	



# Holiday lettings Walloon - Belgium "Het Goudklompje"

6

[Book now](#)





## Availability calendar - from : july 2018

Aug	W	Th	F	Sa	Su	M	Tu	W	Th	F	Sa	Su	M	Tu	W	Th	F	Sa	Su	M	Tu	W	Th	F	Sa	Su	M	Tu	W	Th	F
2018	1	2	3	4	5	6	7	8	9	10	11	12	13	14	15	16	17	18	19	20	21	22	23	24	25	26	27	28	29	30	31
	-	-	-	-	-	-	-	-	-	-	-	-	-	-	-	-	-	-	-	-	-	-	-	-	-	-	-	-	-	-	-

Sep	Sa	Su	M	Tu	W	Th	F	Sa	Su	M	Tu	W	Th	F	Sa	Su	M	Tu	W	Th	F	Sa	Su							
2018	1	2	3	4	5	6	7	8	9	10	11	12	13	14	15	16	17	18	19	20	21	22	23	24	25	26	27	28	29	30
	-	-	-	-	-	-	-	-	-	-	-	-	-	-	-	-	-	-	-	-	-	-	-	-	-	-	-	-	-	-

[Month : Next >>](#)

## Rental rates - Bungalow - from 1 to 5 Person(s)

Rates	Night	Weekend	week	2 weeks	Month
 Low season	-	£140* (Friday)	£280* (Friday)	-	-
 Mid season	-	£175* (Friday)	£358* (Friday)	-	-
 High season	-	-	£349* (Friday)	-	-
 Festive specials	-	-	£457* (Monday)	-	-

(Check-in day)

[Book now](#)

### Booking conditions

#### • Reservation

- Payment made upon reservation : 50% of rental sum
- Payment balance : 45 days before the stay

#### • rentals

- Service charges to be added
- Day tax in addition
- Cleaning charge levy on departure : £34\*
- Anticipated supplement for :
  - baby
  - animals

### Accepted methods of payment

- Bank transfer (wire)
- MasterCard/ EuroCard
- Cash

[▶ Book now](#)[▶ Contact the owner](#)

Contact directly the property owners

[www.ihacom.co.uk](http://www.ihacom.co.uk)

Advert No.

54962

[>> Book now <<](#)

### Contact

Spoken languages



\* Converted at the rate indicated : €100 = \$117.29 = £89.59

Advert No. 54962

[www.ihacom.co.uk](http://www.ihacom.co.uk)[>> HOLIDAY LETTINGS](#)

BOOK DIRECT WITH THE OWNERS