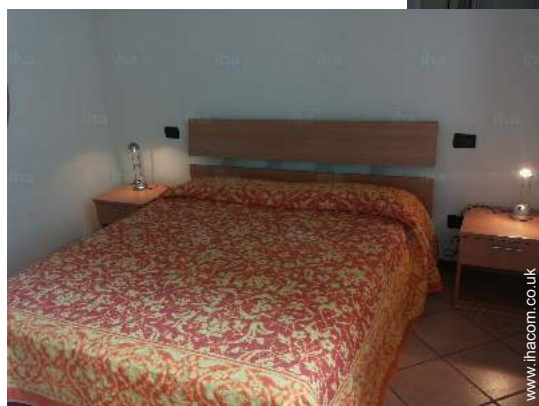


Holiday lettings

Desenzano del Garda

"Appartamento Esmera"

Apartment with partial views of the Lake, near the centre of Desenzano, approximately 500 metres, with free private parking and wifi.



Flat-Apartments 1st floor, separate entrance, in a(an) Private estate 1 floor

Setting : lakeside, tranquil

Capacity : from 2 to 4 person(s)

Bedroom(s) : 1

Room(s) : 2

Desenzano del Garda - Province of Brescia (BS) - Lombardy
Italy



Advert No. 15397

www.ihacom.co.uk



>> HOLIDAY LETTINGS

BOOK DIRECT WITH THE OWNERS

Holiday lettings



Flat-Apartments 1st floor, separate entrance, in a(an) Private estate 1 floor

- Ideal for all age groups, couples with baby
- View : panoramic, lake
- Setting : lakeside, tranquil
- Exposure : East

" The apartment is composed as follows: ground floor living room with bathtub and washing machine and sofa-bed double; on the first floor there is a double room with bath and shower and a mezzanine with double bed (the ceiling is so low). Entrance to the ground floor with small garden with table and parasol. "

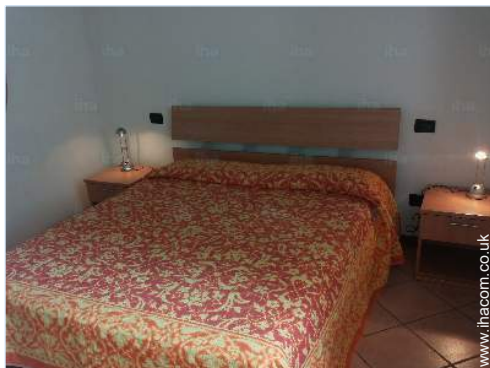
Assets

• **Swimming pool :**

Private swimming-pool (open from '01 may' till '01 october')

• **Parking :**

Covered parking : 5 carport. Parking uncovered : 9 reserved bay.



large bedroom

Surroundings & location



" In the Centre of Desenzano, you can take the boat that will take you in the beautiful tourist resorts of the Lake. Gardaland and other natural parks such as the Park Natura Viva (nice for toddlers) are only 17 km. Very nice to see are Sirmione, Bardolino, Garda, Malcesine, Riva del Garda, Limone, Ciapione, Gargnano, Salò (feature is to make the tour of the Lake), other places, the Lake is accessible in about an hour of travel are Tignale and Tremosine and Varone waterfalls (in the mountains). Other villages to visit like Valeggio sul Mincio, it Borghetto, Sigurtà and later the city of Mantua and the famous Verona Arena, hosting many shows in the evening. If you wish to make a cultural trip to Desenzano del Garda, there is the Museum with the oldest plow, the Cathedral with frescoes of great importance and the Villa Romana; must-see, the grotto of Catullus (ruins of an imposing Roman villa which dominates the whole of the peninsula with a panorama breath) with the Museum of Sirmione and also the House of d'Annunzio in Gardone Riviera, or still in the hamlet of Desenzano, the famous Tower of San Martino and Solferino with the famous wars of independence etc... "

Leisure

• **Leisure activities less than 20 km / 12 miles :**

Bathing, pedalo, snorkelling, scuba diving, water skiing, surfing, windsurfing, sailing, golf, tennis, riding school, mountain bike (path), flying (club), boat trips, horse trekking, donkey rides, mini-golf, rollerblade/rollerskate (circuit), skate board (ramps), racing circuit, ten-pin bowling, basketball, clay pidgeon shooting, safari, safari phototography, fishing, angling, pétanque pitch

• **Supervised :**

Sailing school, dive school, tennis school, riding school

• **Attractions and relaxation :**

Bar/pub, discotheque, restaurant, cinema, park and garden, leisure park, zoo/animal park, exhibition centre, art gallery, historical site, museum, theatre, summer theatre, opera house, festivals, antiques & bric-a-brac, local craftshop, cellar and wine tasting, thermal baths, health farm, beauticians, fitness centre

Surroundings

• **Locality :**

Sandy beach 0.3mi.
Shingle beach 0.3mi.
Public swimming pool 0.93mi.
18 hole golf course 6mi.
Surfing spots 0.3mi.
Watersports centre 0.93mi.
Lake 0.3mi.
Slipway 0.3mi.

• **Amenities :**

Nursery 0.3mi.
Town centre 0.3mi.
Bus stop / bus station 660'
Car rental 0.62mi.
Boat rental 0.5mi.
Breadshop 660'
Local shops 660'
Supermarket 0.3mi.
High class retailers 990'
Hairdressing salon 990'
Post office 990'
Bank 0.3mi.
Chemist 0.3mi.
Hospital 0.62mi.



Kitchen Area



bedroom



bedroom

Interior

- **Receive up to :**
from 2 to 4 person(s) (2 adults, 2 children)
- **Liveable floor area :**
650 Sq.ft.
- **Interior layout :**
2 Room(s), 1 bedroom(s), 1 shower room, 2 WC, living room 194 Sq.ft., Kitchen Area, dining area
- **Sleeps - bed(s) :**
1 double bed(s), 1 sofa bed(s) 2 pers, 1 baby cot(s)
- **Guest facilities :**
T.V., internet access, wardrobe, hair dryer, partly air conditioned, mobile cool air fan, central heating, Double glazed, remote controlled gates
- **Appliances :**
Crockery/cutlery, kitchen utensils, cafetiere, toaster, gas cooker, oven, extractor hood, refrigerator, freezer, washing machine, iron, ironing board

Exterior

- **Outside accommodation :**
Balcony
- **Outside setting :**
Private courtyard, garden
- **Outside amenities :**
Parasol, garden seated area



lake

Services

- **Washing :**
Sheets (1 X / per week), Towels (1 X / per week), Linen (1 X / per week), Blanket(s), Quilt(s), Pillows
- **House :**
Cleaning, Cleaning on departure, Garden/swimming pool maintenance, Snow clearance, Parking

For your guidance

- **For your guidance**
Children welcome
Pets accepted under certain conditions (ask the owner)
Mobile telephone network coverage



Kitchen Area

Holiday lettings
Lombardy - Desenzano del Garda
"Appartamento Esmera"

4
[Book now](#)

Photo album - 1



large bedroom



bedroom



Kitchen Area



bedroom



Kitchen Area

Advert No. 15397

www.ihacom.co.uk



>> HOLIDAY LETTINGS

BOOK DIRECT WITH THE OWNERS

Photo album - 2



lake



historical site



view from the bedroom



shower room



Interior layout



view from the house



nearby



General




nearby

Location



Location & Access

" Desenzano centre is just 500 metres away where you can find many shops and renowned restaurants to satisfy your requirements always open. "

 GPS coordinates in degrees, minutes, seconds: Latitude 45°28'30"N - Longitude 10°32'6"E ([Dwelling](#))

Address

→ Via San Benedetto
25015 Desenzano del Garda

• Motorway (junction) A4

→ Desenzano del Garda, Province of Brescia, Lombardy, Italy
→ Distance : 1.25mi.
→ Time : 10'

• Train station Desenzano del Garda Sirmione

→ Desenzano del Garda, Province of Brescia, Lombardy, Italy
→ Distance : 0.62mi.
→ Time : 5'

• Airport Villafranca

→ Verona, Province of Verona, Veneto, Italy
→ Distance : 22,5mi.
→ Time : 40'

- Sirmione : (4.5mi.)
- Peschiera del Garda : (10,5mi.)
- Verona : (22,5mi.)

Contact

Spoken languages



Holiday lettings Desenzano del Garda - Italy "Appartamento Esmera"

7
[Book now](#)

Availability calendar - from : november 2017

Nov	W	Th	F	Sa	Su	M	Tu	W	Th	F	Sa	Su	M	Tu	W	Th	F	Sa	Su	M	Tu	W	Th	F	Sa	Su	M	Tu	W	Th	
2017	1	2	3	4	5	6	7	8	9	10	11	12	13	14	15	16	17	18	19	20	21	22	23	24	25	26	27	28	29	30	
Dec	F	Sa	Su	M	Tu	W	Th	F	Sa	Su	M	Tu	W	Th	F	Sa	Su	M	Tu	W	Th	F	Sa	Su	M	Tu	W	Th	F	Sa	Su
2017	1	2	3	4	5	6	7	8	9	10	11	12	13	14	15	16	17	18	19	20	21	22	23	24	25	26	27	28	29	30	31
Jan	M	Tu	W	Th	F	Sa	Su	M	Tu	W	Th	F	Sa	Su	M	Tu	W	Th	F	Sa	Su	M	Tu	W	Th	F	Sa	Su	M	Tu	W
2018	1	2	3	4	5	6	7	8	9	10	11	12	13	14	15	16	17	18	19	20	21	22	23	24	25	26	27	28	29	30	31
Feb	Th	F	Sa	Su	M	Tu	W	Th	F	Sa	Su	M	Tu	W	Th	F	Sa	Su	M	Tu	W	Th	F	Sa	Su	M	Tu	W			
2018	1	2	3	4	5	6	7	8	9	10	11	12	13	14	15	16	17	18	19	20	21	22	23	24	25	26	27	28			
Mar	Th	F	Sa	Su	M	Tu	W	Th	F	Sa	Su	M	Tu	W	Th	F	Sa	Su	M	Tu	W	Th	F	Sa	Su	M	Tu	W	Th	F	Sa
2018	1	2	3	4	5	6	7	8	9	10	11	12	13	14	15	16	17	18	19	20	21	22	23	24	25	26	27	28	29	30	31
Apr	Su	M	Tu	W	Th	F	Sa	Su	M	Tu	W	Th	F	Sa	Su	M	Tu	W	Th	F	Sa	Su	M	Tu	W	Th	F	Sa	Su	M	
2018	1	2	3	4	5	6	7	8	9	10	11	12	13	14	15	16	17	18	19	20	21	22	23	24	25	26	27	28	29	30	
May	Tu	W	Th	F	Sa	Su	M	Tu	W	Th	F	Sa	Su	M	Tu	W	Th	F	Sa	Su	M	Tu	W	Th	F	Sa	Su	M	Tu	W	Th
2018	1	2	3	4	5	6	7	8	9	10	11	12	13	14	15	16	17	18	19	20	21	22	23	24	25	26	27	28	29	30	31
June	F	Sa	Su	M	Tu	W	Th	F	Sa	Su	M	Tu	W	Th	F	Sa	Su	M	Tu	W	Th	F	Sa	Su	M	Tu	W	Th	F	Sa	
2018	1	2	3	4	5	6	7	8	9	10	11	12	13	14	15	16	17	18	19	20	21	22	23	24	25	26	27	28	29	30	
Jul	Su	M	Tu	W	Th	F	Sa	Su	M	Tu	W	Th	F	Sa	Su	M	Tu	W	Th	F	Sa	Su	M	Tu	W	Th	F	Sa	Su	M	Tu
2018	1	2	3	4	5	6	7	8	9	10	11	12	13	14	15	16	17	18	19	20	21	22	23	24	25	26	27	28	29	30	31
Aug	W	Th	F	Sa	Su	M	Tu	W	Th	F	Sa	Su	M	Tu	W	Th	F	Sa	Su	M	Tu	W	Th	F	Sa	Su	M	Tu	W	Th	F
2018	1	2	3	4	5	6	7	8	9	10	11	12	13	14	15	16	17	18	19	20	21	22	23	24	25	26	27	28	29	30	31

Low season
 Mid season
 High season



Holiday lettings
Province of Brescia - Lombardy
"Appartamento Esmera"

8
[Book now](#)

Availability calendar - from : august 2018

Sep	Sa	Su	M	Tu	W	Th	F	Sa	Su	M	Tu	W	Th	F	Sa	Su	M	Tu	W	Th	F	Sa	Su	M	Tu	W	Th	F	Sa	Su
2018	1	2	3	4	5	6	7	8	9	10	11	12	13	14	15	16	17	18	19	20	21	22	23	24	25	26	27	28	29	30
	-	-	-	-	-	-	-	-	-	-	-	-	-	-	-	-	-	-	-	-	-	-	-	-	-	-	-	-	-	-

Oct	M	Tu	W	Th	F	Sa	Su	M	Tu	W	Th	F	Sa	Su	M	Tu	W	Th	F	Sa	Su	M	Tu	W	Th	F	Sa	Su	M	Tu	W
2018	1	2	3	4	5	6	7	8	9	10	11	12	13	14	15	16	17	18	19	20	21	22	23	24	25	26	27	28	29	30	31
	-	-	-	-	-	-	-	-	-	-	-	-	-	-	-	-	-	-	-	-	-	-	-	-	-	-	-	-	-	-	-

Low season

Mid season

High season

[Month : Next >>](#)

Rental rates - Flat-Apartments - from 2 to 4 Person(s)

Rates	Night	Weekend	week	2 weeks	Month
Low season	£76* > 2	£152*	£529*	-	-
Mid season	£81* > 3	£161*	£564*	-	-
High season	£94* > 5	£188*	£658*	-	-

> Minimum Night

[Book now](#)

Booking conditions

• Reservation

→ Payment balance :
1 day before the stay

• rentals

→ Service charges included
→ Day tax included
→ Cleaning charge on departure included

Accepted methods of payment

• Cash

[▶ Book now](#)

[▶ Contact the owner](#)

Contact directly the property owners

www.ihacom.co.uk

Advert No.

15397

[>> Book now <<](#)

Contact

Spoken languages



* Converted at the rate indicated : €100 = \$117.29 = £89.59

Advert No. 15397

www.ihacom.co.uk

