

# Holiday lettings Baltic Sea Flat-Apartments



**Flat-Apartments** 3rd floor, shared entrance, in a(an) Estate 7 floors

**Setting** : suitable for a relaxing break, seaside

**Capacity** : from 1 to 4 person(s)

**Bedroom(s)** : 2

**Room(s)** : 2

Damp - Schleswig-Holstein

Germany

Reservation : +49 (0) 43525188 (Germany)

Advert No. 56037

www.ihacom.co.uk



### Holiday lettings



Flat-Apartments 3rd floor, shared entrance, in a(an) Estate 7 floors

- **Ideal for all age groups, family**
- **View :** panoramic, unobscured, dominant, sea/ocean, garden/park, harbour
- **Setting :** suitable for a relaxing break, seaside
- **Exposure :** North-east

### Assets

- **Parking :**  
Parking uncovered : 1 reserved bay, off road.
- **Advantages :**  
Sauna, jacuzzi, massage table, sunbed, fitness machine(s), billiard table, pinball, ping-pong table, basket ball net, squash court, volley ball court, mini-golf, 1 bike(s), 1 windsurf board(s), motor boat, sailing boat, horses and riding equipment

**Benefits :**  
Direct access to the beach, driving range, stable(s)



marina

### Surroundings & location



Seaside Golf Horse riding Fishing



Spa Festival Culture

### Leisure

- **Leisure activities less than 20 km / 12 miles :**

Bathing, pedalo, scuba diving, scuba diving (Standard diving dress), windsurfing, sailing, kite surfing, golf, tennis, squash, riding school, pathway, coastal/forest paths, hiking, climbing, boat trips, horse-drawn carriage, horse trekking, mini-golf, rollerblade/rollerskate (circuit), skate board (ramps), ten-pin bowling, volleyball, fishing, angling

- **Supervised :**

Sailing school, dive school, riding school

- **Attractions and relaxation :**

Bar/pub, discotheque, restaurant, park and garden, zoo/animal park, historical site, museum, theatre, summer theatre, thermal baths, sauna, health farm, beauticians, fitness centre

### Surroundings

- **Locality :**

Heated swimming pool 330'  
Sea/ocean 330'  
Sandy beach 330'  
Public tennis court 660'  
Windsurfing spots 330'  
Surfing spots 330'  
Watersports centre 330'  
Forest 0.5mi.  
Marina <165'

- **Amenities :**

Nursery 660'  
Village centre <165'  
Bus stop / bus station 330'  
Bike/mountain bike hire <165'  
Boat rental 330'  
Scuba diving material hire 990'  
Household linens for hire/laundry services <165'  
Breadshop <165'  
Local shops 330'  
Supermarket 165'  
Hairdressing salon 330'  
Internet cafe 330'  
Post office <165'  
Bank 3mi.  
Cash point <165'  
Chemist 3mi.  
Doctor 330'  
Hospital 990'  
Dispensing clinic



dining area



living room



living room

### Interior

- **Receive up to :**  
from 1 to 4 person(s) (2 adults, 2 children)
- **Liveable floor area :**  
530 Sq.ft.
- **Interior layout :**  
2 Room(s), 2 bedroom(s), sleeping area, 1 bathroom, 1 WC, living room 215 Sq.ft., separate kitchen, dining area, loggia
- **Sleeps - bed(s) :**  
2 double bed(s), 2 twin beds (standard)
- **Guest facilities :**  
Lift, T.V., hi-fi system, DVD player, telephone, cable/satellite, wardrobe, cupboard, Hanging wardrobe, central heating, Curtains, Double glazed, entry phone system
- **Appliances :**  
Crockery/cutlery, kitchen utensils, electric coffee maker, electric kettle, toaster, juicer, electric cooker, micro-wave oven, extractor hood, refridgerator, freezer, dish washer, vacuum cleaner, iron, ironing board

### Exterior

- **Outside accommodation :**  
Balcony
- **Outside setting :**  
Lawn
- **Outside amenities :**  
Garden table(s), garden seat(s)



view from the bedroom

### Services

- **Washing :**  
Sheets supplement (+£5\*), Towels supplement (+£3\*), Linen supplement (+£1\*)
- **House :**  
Cleaning on departure, Parking
- **Personnel :**  
Laundry supplement, Baby sitting supplement, Beauty treatments supplement, Massage supplement

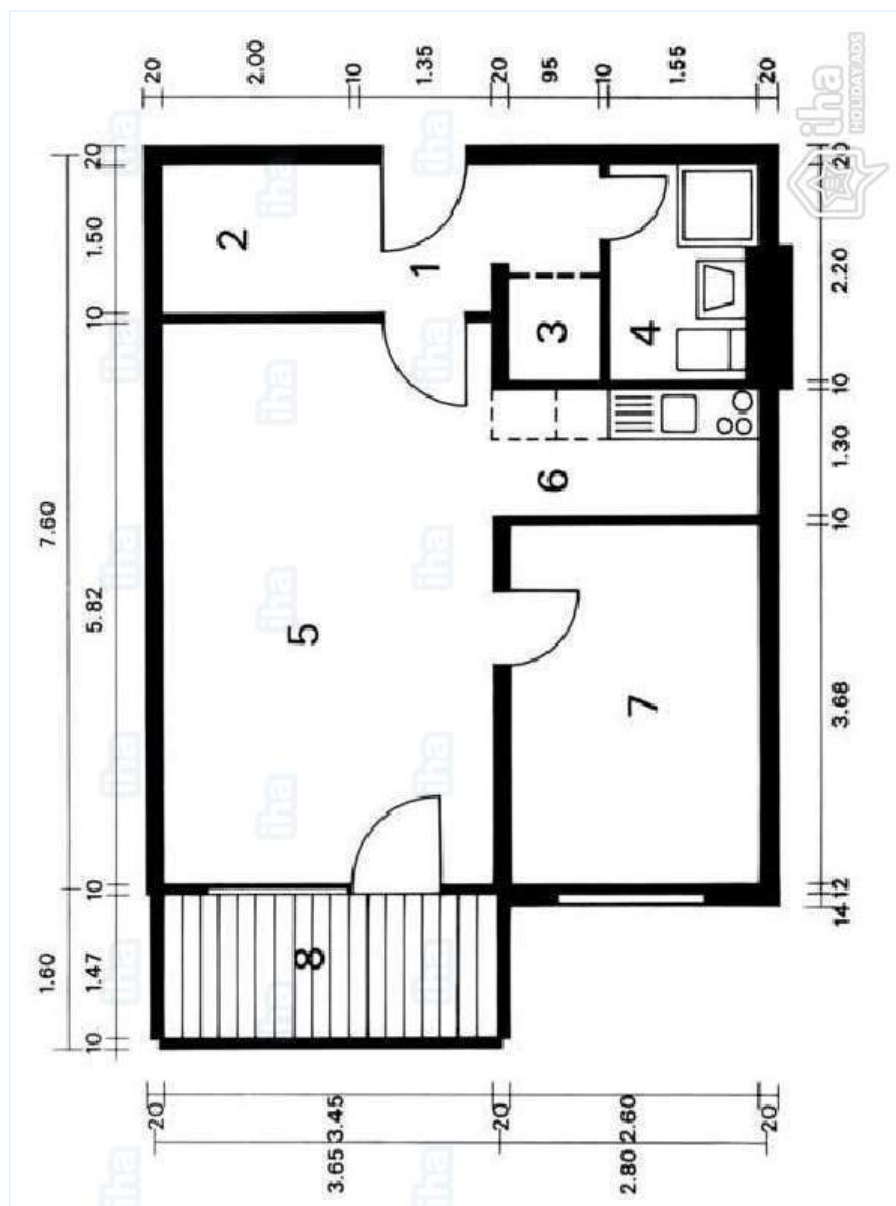
### For your guidance

- **For your guidance**  
Children welcome  
Pets accepted under certain conditions (ask the owner)  
Non smoking rental, mobile telephone network coverage  
Water : hot/cold  
Local voltage supply : 220-240V / 50Hz  
Electricity supply : mains
- **Handicapped people welcome**  
Wheelchair access



master bedroom

Floor plan



[www.ihacom.co.uk](http://www.ihacom.co.uk)

Photo album - 1



marina



living room



dining area



living room



master bedroom

Photo album - 2



view from the bedroom



kitchen



bathroom



bathroom



small bedroom



view from the loggia



direct access to the beach



watersports nearby

Photo album - 3



sailing



sailing



outside



view over the sea



view of the port



outside



outside

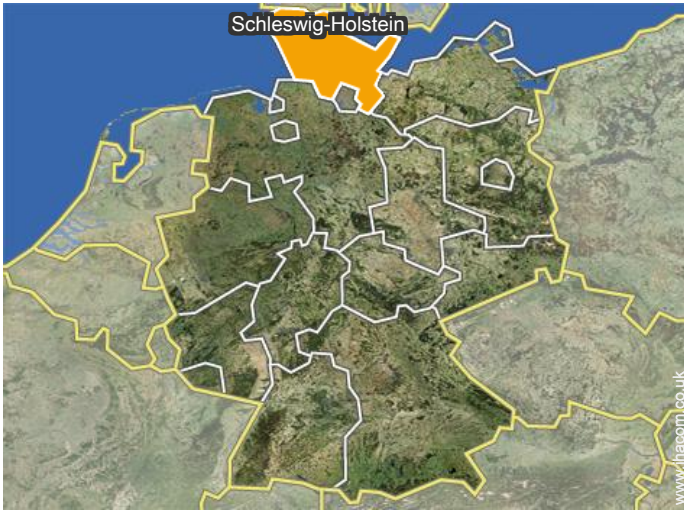


Summer



living room

Location



Location & Access



GPS coordinates in degrees, minutes, seconds: Latitude 54°34'54"N - Longitude 10° 1'16"E ([Dwelling](#))

Address

→ Seeuferweg  
24351 Damp

● **Motorway (junction) A7**

→ Büdelsdorf, Schleswig-Holstein,  
Germany  
→ Distance : 26mi.  
→ Time : 40'

● **Train station Eckernförde**

→ Eckernförde, Schleswig-Holstein,  
Germany  
→ Distance : 13mi.  
→ Time : 30'

● **Airport Hamburg**

→ Hamburg, State of Hamburg, Germany  
→ Distance : 84mi.  
→ Time : 1h30'

- Eckernförde : (12.5mi.)
- Kappeln : (9mi.)
- Kiel : (30mi.)

Contact

Spoken  
languages





# Holiday lettings Damp - Baltic Sea Flat-Apartments

[Book now](#)

## Availability calendar - from : december 2017

Dec	F	Sa	Su	M	Tu	W	Th	F	Sa	Su	M	Tu	W	Th	F	Sa	Su	M	Tu	W	Th	F	Sa	Su							
2017	1	2	3	4	5	6	7	8	9	10	11	12	13	14	15	16	17	18	19	20	21	22	23	24	25	26	27	28	29	30	31

Jan	M	Tu	W	Th	F	Sa	Su	M	Tu	W	Th	F	Sa	Su	M	Tu	W	Th	F	Sa	Su	M	Tu	W							
2018	1	2	3	4	5	6	7	8	9	10	11	12	13	14	15	16	17	18	19	20	21	22	23	24	25	26	27	28	29	30	31
	-	-	-	-	-	-	-	-	-	-	-	-	-	-	-	-	-	-	-	-	-	-	-	-	-	-	-	-	-	-	

Feb	Th	F	Sa	Su	M	Tu	W	Th	F	Sa	Su	M	Tu	W	Th	F	Sa	Su	M	Tu	W								
2018	1	2	3	4	5	6	7	8	9	10	11	12	13	14	15	16	17	18	19	20	21	22	23	24	25	26	27	28	
	-	-	-	-	-	-	-	-	-	-	-	-	-	-	-	-	-	-	-	-	-	-	-	-	-	-	-	-	-

Mar	Th	F	Sa	Su	M	Tu	W	Th	F	Sa	Su	M	Tu	W	Th	F	Sa	Su	M	Tu	W	Th	F	Sa							
2018	1	2	3	4	5	6	7	8	9	10	11	12	13	14	15	16	17	18	19	20	21	22	23	24	25	26	27	28	29	30	31
	-	-	-	-	-	-	-	-	-	-	-	-	-	-	-	-	-	-	-	-	-	-	-	-	-	-	-	-	-	-	

Apr	Su	M	Tu	W	Th	F	Sa	Su	M	Tu	W	Th	F	Sa	Su	M	Tu	W	Th	F	Sa	Su	M							
2018	1	2	3	4	5	6	7	8	9	10	11	12	13	14	15	16	17	18	19	20	21	22	23	24	25	26	27	28	29	30
	-	-	-	-	-	-	-	-	-	-	-	-	-	-	-	-	-	-	-	-	-	-	-	-	-	-	-	-	-	-

May	Tu	W	Th	F	Sa	Su	M	Tu	W	Th	F	Sa	Su	M	Tu	W	Th	F	Sa	Su	M	Tu	W	Th							
2018	1	2	3	4	5	6	7	8	9	10	11	12	13	14	15	16	17	18	19	20	21	22	23	24	25	26	27	28	29	30	31
	-	-	-	-	-	-	-	-	-	-	-	-	-	-	-	-	-	-	-	-	-	-	-	-	-	-	-	-	-	-	

June	F	Sa	Su	M	Tu	W	Th	F	Sa	Su	M	Tu	W	Th	F	Sa	Su	M	Tu	W	Th	F	Sa							
2018	1	2	3	4	5	6	7	8	9	10	11	12	13	14	15	16	17	18	19	20	21	22	23	24	25	26	27	28	29	30
	-	-	-	-	-	-	-	-	-	-	-	-	-	-	-	-	-	-	-	-	-	-	-	-	-	-	-	-	-	-

Jul	Su	M	Tu	W	Th	F	Sa	Su	M	Tu	W	Th	F	Sa	Su	M	Tu	W	Th	F	Sa	Su	M	Tu							
2018	1	2	3	4	5	6	7	8	9	10	11	12	13	14	15	16	17	18	19	20	21	22	23	24	25	26	27	28	29	30	31
	-	-	-	-	-	-	-	-	-	-	-	-	-	-	-	-	-	-	-	-	-	-	-	-	-	-	-	-	-	-	

Aug	W	Th	F	Sa	Su	M	Tu	W	Th	F	Sa	Su	M	Tu	W	Th	F	Sa	Su	M	Tu	W	Th	F							
2018	1	2	3	4	5	6	7	8	9	10	11	12	13	14	15	16	17	18	19	20	21	22	23	24	25	26	27	28	29	30	31
	-	-	-	-	-	-	-	-	-	-	-	-	-	-	-	-	-	-	-	-	-	-	-	-	-	-	-	-	-	-	

Sep	Sa	Su	M	Tu	W	Th	F	Sa	Su	M	Tu	W	Th	F	Sa	Su	M	Tu	W	Th	F	Sa	Su							
2018	1	2	3	4	5	6	7	8	9	10	11	12	13	14	15	16	17	18	19	20	21	22	23	24	25	26	27	28	29	30
	-	-	-	-	-	-	-	-	-	-	-	-	-	-	-	-	-	-	-	-	-	-	-	-	-	-	-	-	-	-

■ Low season      ■ Mid season



# Holiday lettings Schleswig-Holstein - Germany Flat-Apartments

10  
[Book now](#)

## Availability calendar - from : september 2018

Oct	M	Tu	W	Th	F	Sa	Su	M	Tu	W	Th	F	Sa	Su	M	Tu	W	Th	F	Sa	Su	M	Tu	W							
2018	1	2	3	4	5	6	7	8	9	10	11	12	13	14	15	16	17	18	19	20	21	22	23	24	25	26	27	28	29	30	31
	-	-	-	-	-	-	-	-	-	-	-	-	-	-	-	-	-	-	-	-	-	-	-	-	-	-	-	-	-	-	

Nov	Th	F	Sa	Su	M	Tu	W	Th	F	Sa	Su	M	Tu	W	Th	F	Sa	Su	M	Tu	W	Th	F							
2018	1	2	3	4	5	6	7	8	9	10	11	12	13	14	15	16	17	18	19	20	21	22	23	24	25	26	27	28	29	30
	-	-	-	-	-	-	-	-	-	-	-	-	-	-	-	-	-	-	-	-	-	-	-	-	-	-	-	-	-	

■ Low season

■ Mid season

[Month : Next >>](#)

## Rental rates - Flat-Apartments - from 1 to 4 Person(s)

Rates	Night	Weekend	week	2 weeks	Month
<span style="color: green;">■</span> Low season	£39* > 3	-	-	-	-
<span style="color: blue;">■</span> Mid season	£51* > 3	-	-	-	-
<span style="color: orange;">■</span> High season	£64* (Saturday) > 7	-	-	-	-

(Check-in day) > Minimum Night

[Book now](#)

### Booking conditions

• **Reservation**

→ Payment made upon reservation : 25% of rental sum

• **rentals**

→ Service charges to be added  
→ Cleaning charge levy on departure : £45\*  
→ Anticipated supplement for :  
- animals  
- supplementary bed(s)

[▶ Book now](#)

[▶ Contact the owner](#)

### Accepted methods of payment

• International Money Order • Bank transfer (wire) • MasterCard/EuroCard • Cash

Contact directly the property owners

[www.ihacom.co.uk](http://www.ihacom.co.uk)

Advert No.

56037

[>> Book now <<](#)

### Contact

Spoken languages



\* Converted at the rate indicated : €100 = \$117.29 = £89.59

Advert No. 56037

[www.ihacom.co.uk](http://www.ihacom.co.uk)



[>> HOLIDAY LETTINGS](#)

[BOOK DIRECT WITH THE OWNERS](#)